

# CH-Wattbox Installation and Usage Guide



Date: Monday, 9 August 2021  
Authors: Richard Woodburn

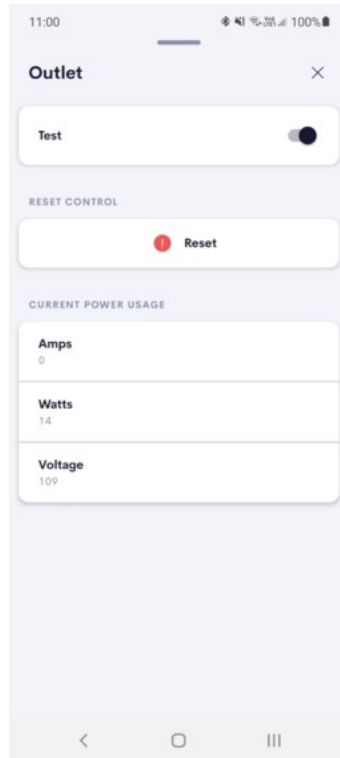


# Contents

- Overview..... 3**
- Features..... 4**
- Installation..... 5**
  - Standard Installation..... 5
  - Manual Installation..... 6
- Usage..... 7**
  - Room Control..... 7
  - Control..... 8
  - Sequences..... 9
  - Events..... 10
    - Offline..... 11

## Overview

The Wattbox Crestron Home driver allows for control over the individual power outlets found on the board. The device is capable of monitoring power usage of each outlet individually as well as total overall usage for the device.



## Features

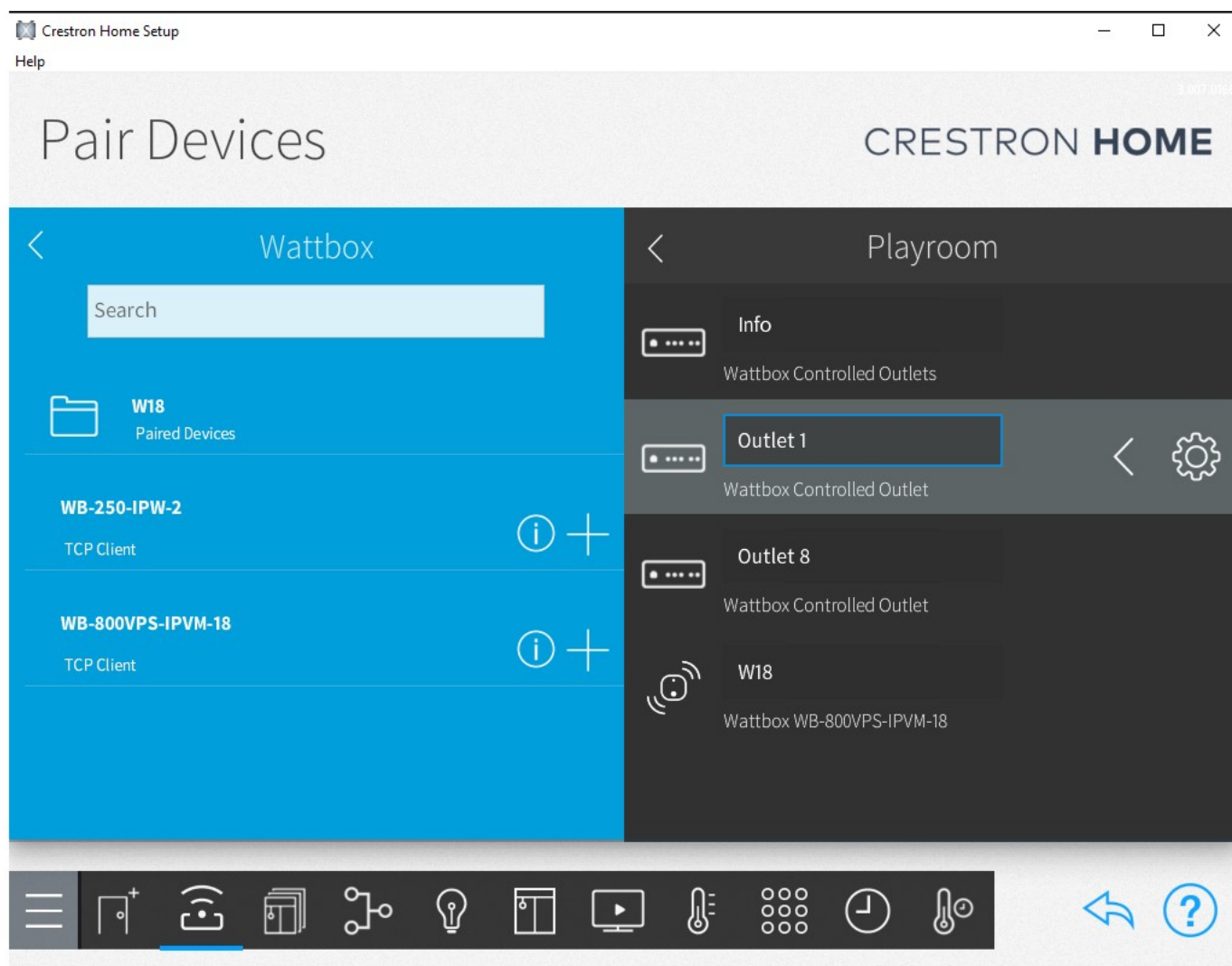
- WattBox is designed to revolutionize the way you think about power. We deliver every form factor you can imagine, remote management, a robust lineup of IP and traditional power conditioners, surge protection devices, uninterruptible power supplies, and a suite of accessories to help you complete the job.
- WattBox is built on a hardware platform of professional-grade surge protection and OvrC, the industry's #1 remote management platform. WattBox makes it easy to offer your customers IP power solutions, no matter their space or budget. Every job needs power, so every install needs WattBox.
- From 2-outlet ultra-compact Wi-Fi models to 18-outlet vertical solutions, we've got a WattBox to fit any install. Power and control everything you need to fix a locked-up smart TV, streaming device, or even an entire system.
- How many times have you driven to the job site to fix an issue only to discover the solution is a simple reset? Thanks to WattBox and OvrC, those days are gone. WattBox + OvrC work together to help you troubleshoot remotely, limit service calls, and even create an opportunity for recurring revenue.
- Pair your IP WattBox with an OvrC-enabled WattBox Uninterruptible Power Supply (UPS) to safely back up your equipment in case of power failure. You'll also unlock features like remote alarm silencing, load shedding, battery health, run time, and battery charge level.

# Installation

## Standard Installation

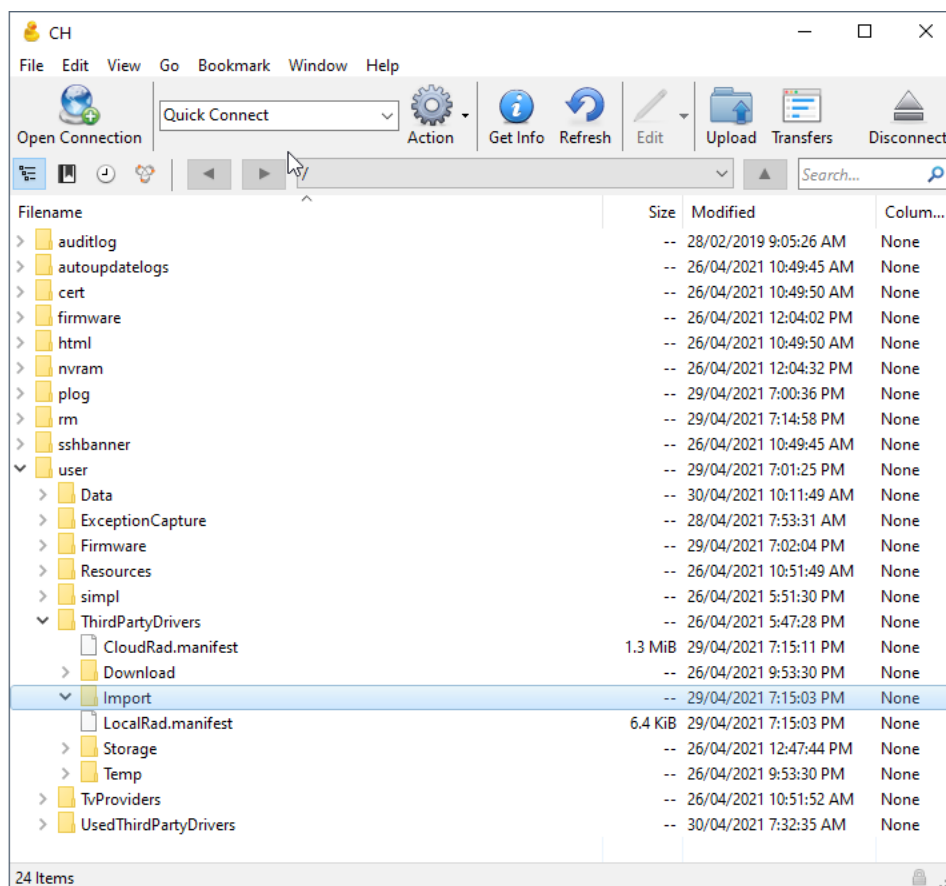
The Wattbox Crestron Home module is available for installation directly from the Drivers menu in the Pair Devices step in the Crestron Setup App. To find the driver you need to go into

1. Pair Devices
2. Drivers
3. Gateway
4. Wattbox
5. WB-800VPS-IPVM-18
6. Press the + button



## Manual Installation

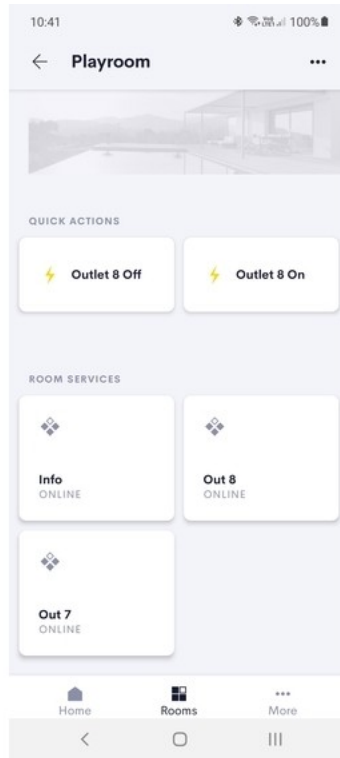
If you want to replace the driver from the online database, or if its not currently there, you can manually install the driver. To manually install you will need to first copy the driver on to your Crestron Home processor. You will fist need to make a SFTP connection to the processor, you can do that with software like Cyberduck or Filezilla. Once you are connected you will need to copy the driver to the /user/ThirdPartyDrivers/Import folder. With this done you can go back to the Standard Installation steps.



# Usage

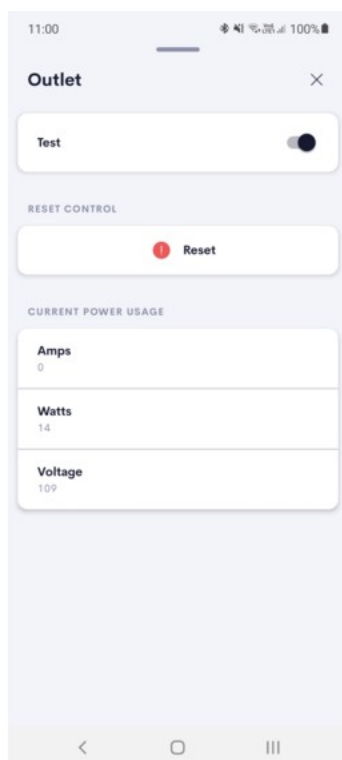
## Room Control

The driver is tied to the room you have installed it into. When you enter the room you will see a tile for each outlet available, which can be individually named according the appliance that is plugged in during installation. To control an outlet just press on the tile.



## Control

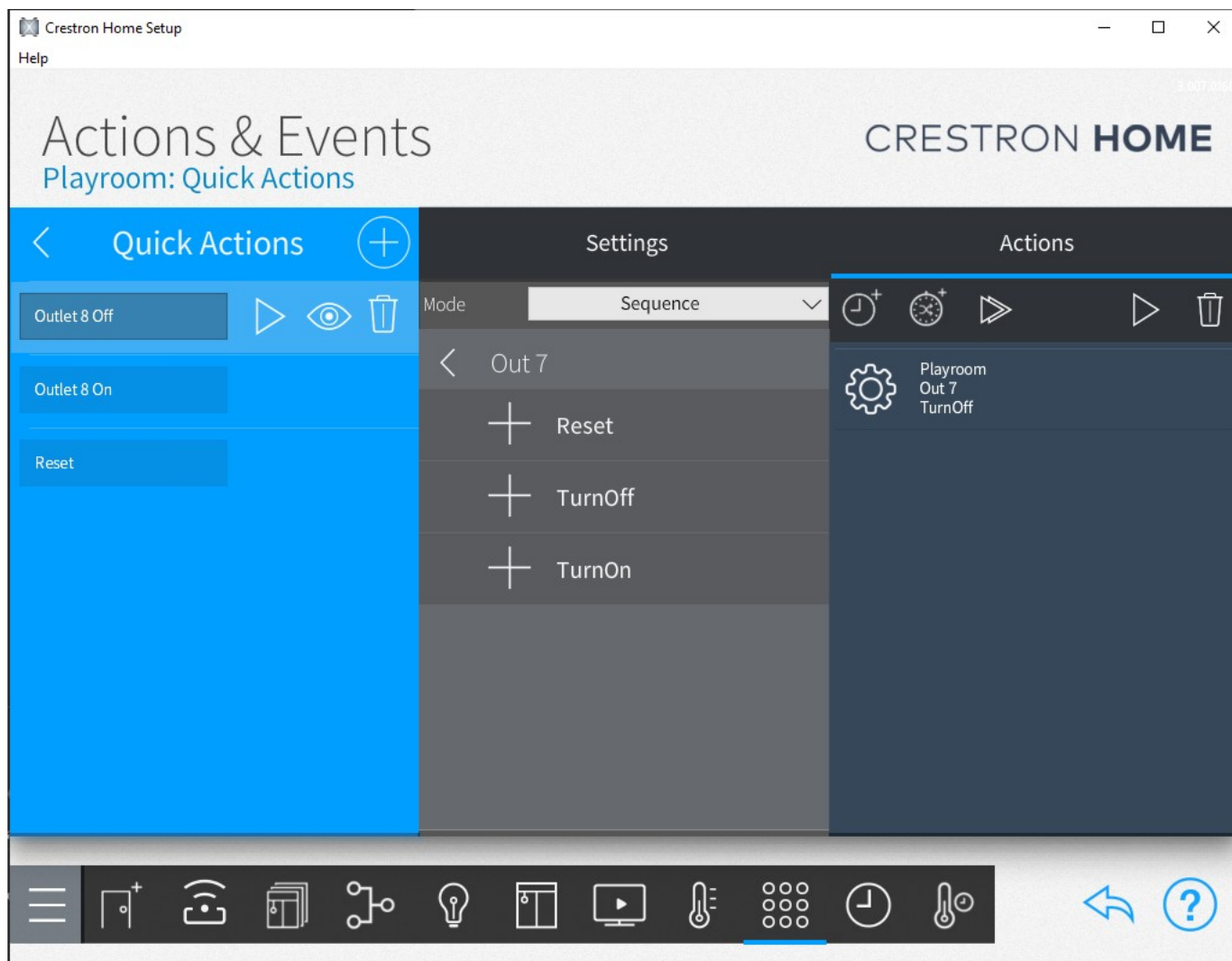
To control the Wattbox Outlet you first need to select from the room page. Click on the desired outlet tile and you will be presented the controls shown below, allowing you to turn on, turn off or reset the outlet.





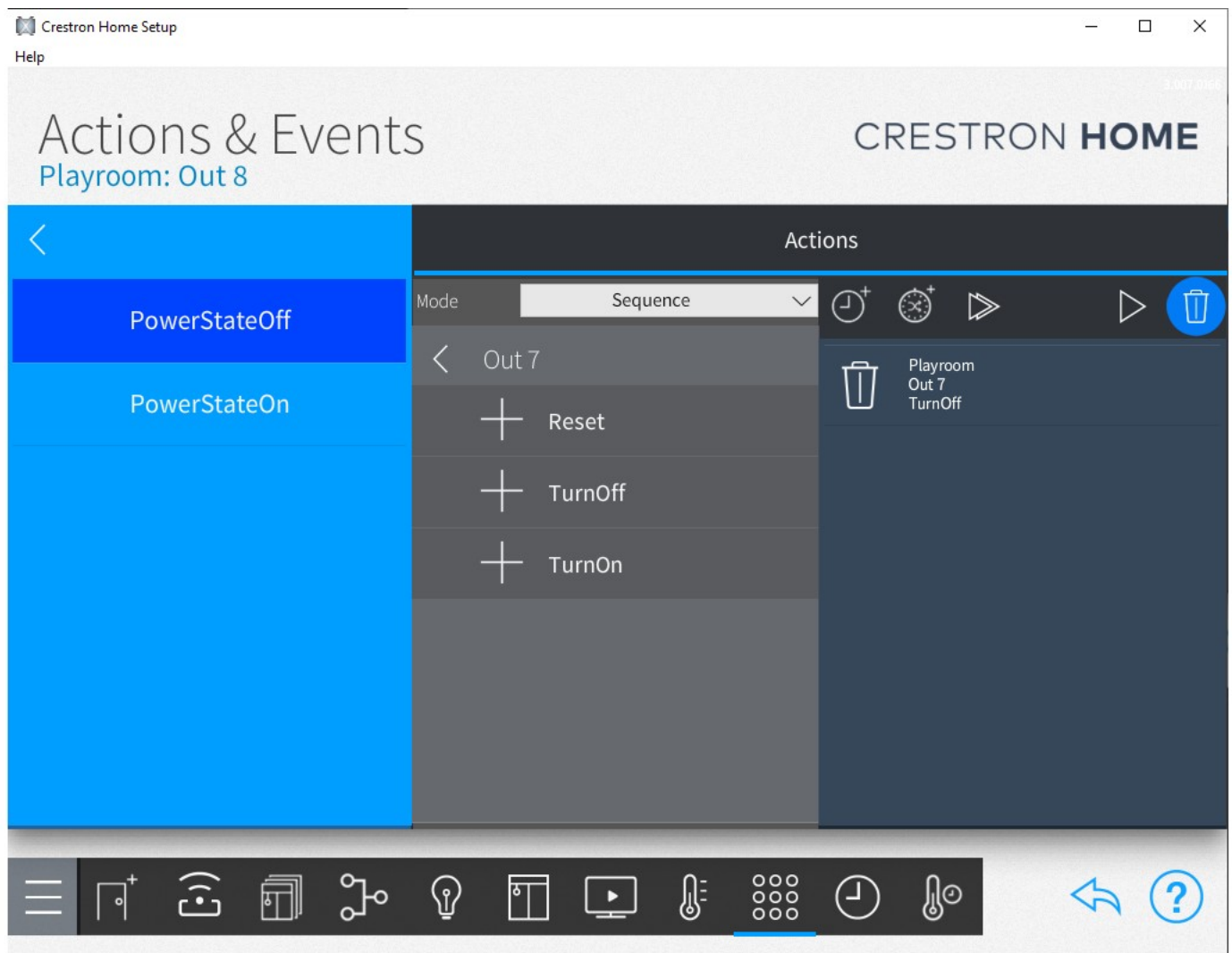
## Sequences

All of the functions of the Wattbox are available to use in sequences.



## Events

The driver received feedback from the Wattbox device and can be used to trigger automation when an outlet is turned on or off.



## Offline

If the driver loses connection to the Wattbox device it will show as being offline. The driver will attempt to reconnect and if successful will automatically change back to being online. NOTE: while the driver is offline the control page is inaccessible.

