



## Integration Note

Manufacturer:	SnapAV
Model Number(s):	LUM-500-NVR-4CH, LUM-500-NVR-8CH, LUM-500-NVR-16CH
Core Module Version:	7.3
Document Revision Date:	10/10/17

### OVERVIEW AND SUPPORTED FEATURES

The SnapAV Luma NVRs are a line of network-enabled Video Recorders that support the connection of up to 16 IP Cameras. The NVR Connects to the ELAN Controller via Ethernet to provide communications, enabling control from the ELAN system.

#### **THE FOLLOWING FEATURES ARE SUPPORTED:**

**Basic Control:** The SnapAV Luma NVR OSD is controllable via ELAN Keypads and the SnapAV OSD with a built in one-way IP driver and interface. This interface is assignable as a source on any zone controller on the Media tab.

#### **THE FOLLOWING FEATURES ARE NOT SUPPORTED:**

**Live or Recorded Video:** Video output from the NVR is not available in the ELAN Viewer.

Any feature not specifically noted as supported should be assumed to be unsupported.
--

## **INSTALLATION OVERVIEW**

Installing the SnapAV NVR can be broken down into the following steps:

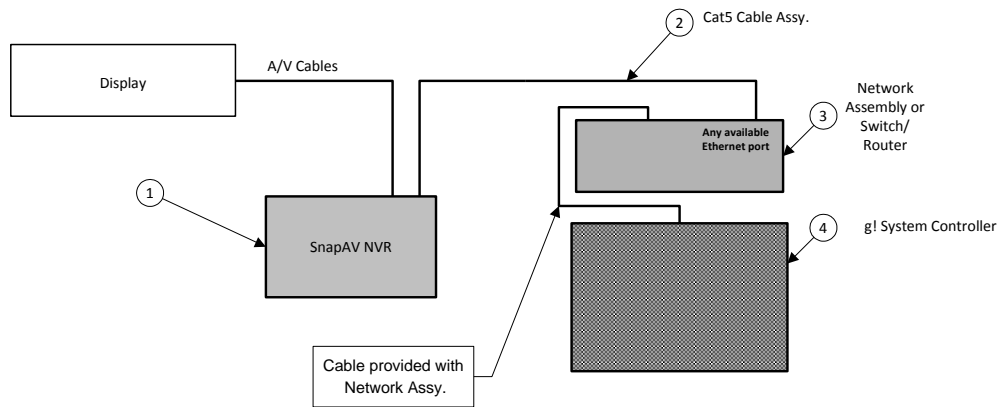
1. During the rough-in phase install the necessary power, A/V, and network cabling for the SnapAV Luma NVR and Cameras
2. Also during the rough-in phase, run a Cat5 wire from the location of the NVR back to the Router to provide the Ethernet connection needed to control the NVR.
3. Install the NVR and Cameras.
4. Test the NVR and Cameras independently of the ELAN system to ensure proper operation of the NVR and Cameras.
5. Configure the ELAN system for the NVR. This step is outlined in ELAN Configuration Details.
6. Test the system.

## **LUM-500-NVR CONFIGURATION**

In addition to normal SnapAV Luma setup procedures, it is required to set the LUM-500-NVR devices to static IP addresses for reliable communications. To set a NVR to a static IP address, use the remote or attached mouse to navigate the on screen interface:

1. Press the Menu Button on the Remote.
2. Navigate to Network.
3. Select IP Address Setup
4. Set IP Mode to STATIC IP
5. Select IP ADDRESS and enter an available static IP address. Typically the first IP Video device is set to 192.168.0.80, the second to 192.168.0.81, and so on.
6. Select SUBNET MASK and set to 255.255.255.000
7. Set the DEFAULT GATEWAY and DNS SERVER (PRIMARY) to the router IP address. By default, 192.168.0.001.
8. Press SAVE to get back to the HOME screen.

## CONNECTION DIAGRAM



## BILL OF MATERIALS

#	Device	Manufacturer	Part Number	Protocol	Connector Type	Notes
1	SnapAV NVR	SnapAV	LUM-500-NVR-xxCH	Ethernet		
2	Cat 5 Cable Assy	Installer	N/A	Ethernet	RJ-45 Male X RJ-45 Male	
3	Switch/Router	Various	Various	Ethernet	RJ-45	
4	g! System Controller	ELAN	Various (e.g. HC 12)	Ethernet	RJ-45	

## ELAN CONFIGURATION DETAILS

The following table provides settings used in the **ELAN** Configurator. Please refer to the *ELAN Configurator Reference Guide* for more details.

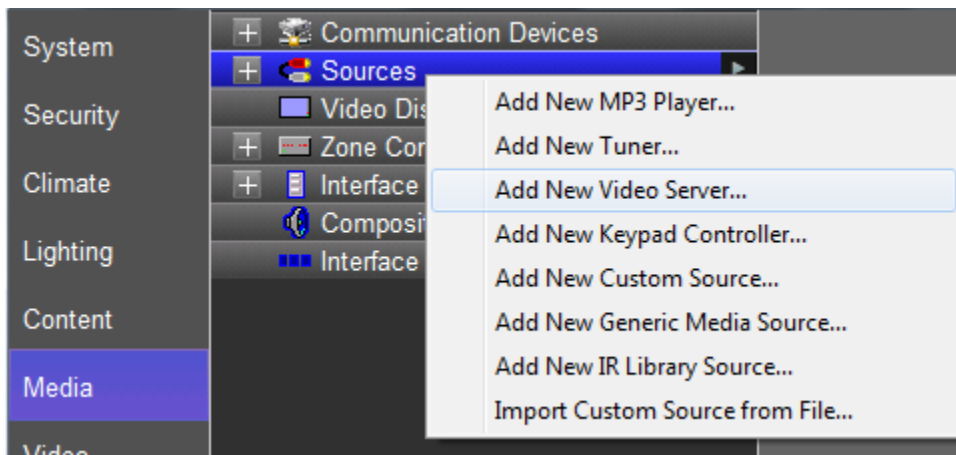
- “<User Defined>”, etc.                      Type in the desired name for the item.
- “<Auto Detect >”, etc.                      The system will auto detect this variable.

Devices	Variable Name	Setting	Comments
<b>Media Tab</b>			
<b>Two-Way Device &gt; DVD Player</b>	<b>Name</b>	<User Defined>	
	<b>Device Type</b>	SnapAV Luma 500 NVR xxCH	<b>Select appropriate number of channels for your model</b>
	<b>User Name</b>	<User Defined>	
	<b>Password</b>	<User Defined>	
	<b>IP Address</b>	<User Defined>	
	<b>Port</b>	<User Defined>	
<b>One Way Interface</b>	<b>Interface Name</b>	<User Defined>	
	<b>Layout Template</b>	SnapAV	
	<b>Connect to Existing</b>	<Select from List> <b>SnapAV Luma 500 NVR xxCH</b>	Two-Way Device Described above

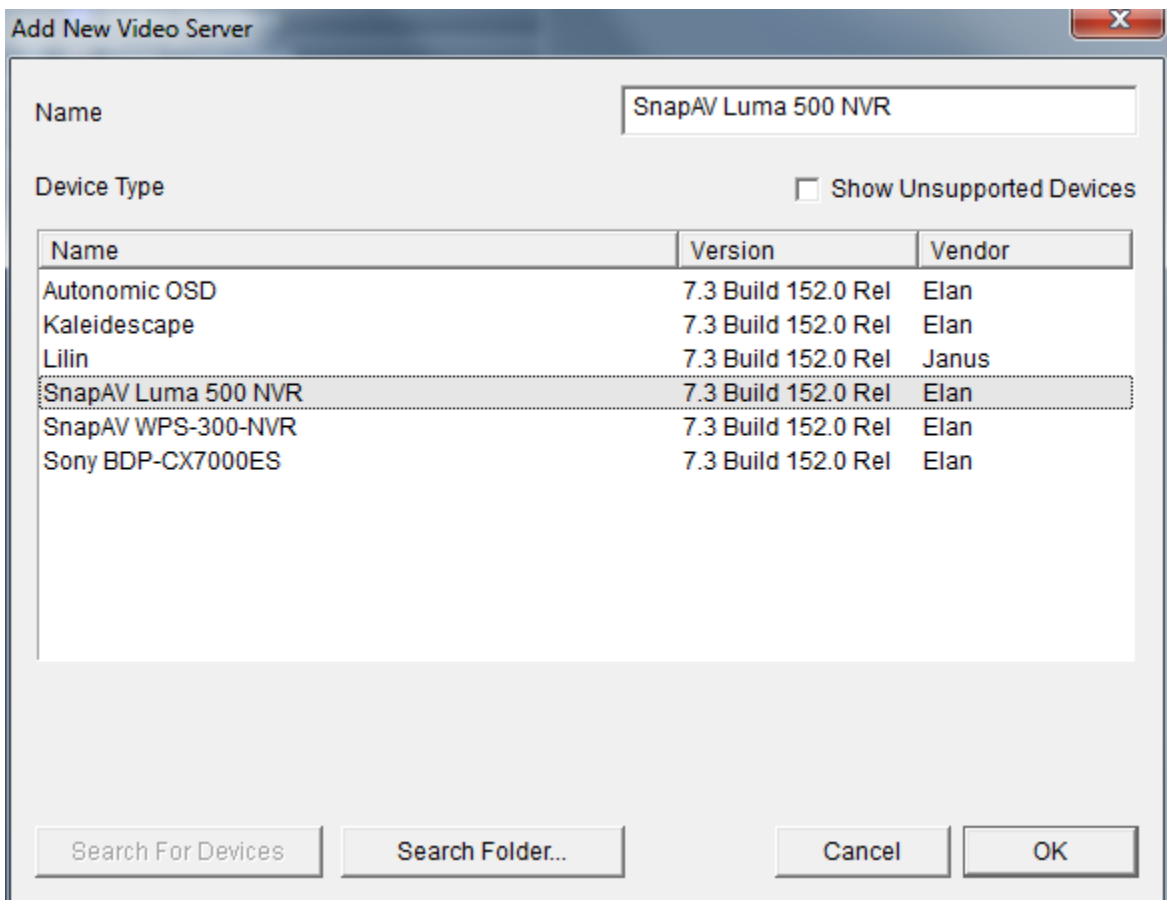
## ELAN CONFIGURATION STEPS

### CREATE NVR INSTANCE

1. Under **Media** tab/ **Sources**, Select **Add New Video Server**.



2. From the dialog box, choose the **SnapAV Luma 500 NVR** driver and click **OK**.

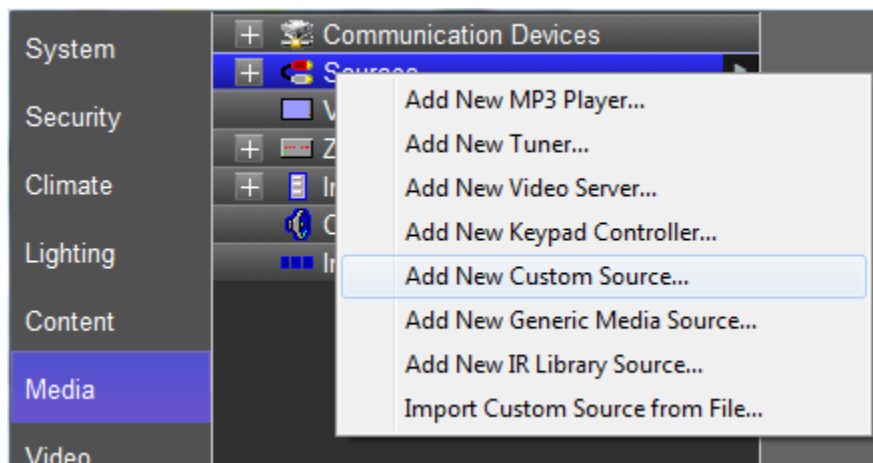


3. The **Source** configuration pane, enter the correct IP, User and Password for the NVR. Also set the port number (default port is 80).

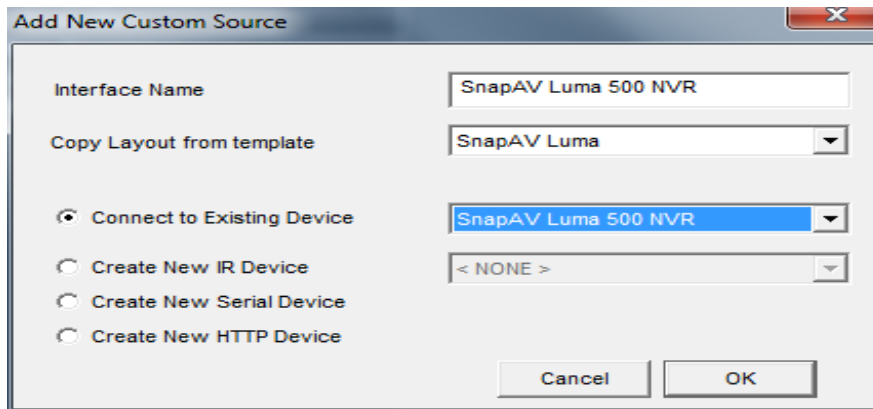
Video Server : SnapAV Luma 500 NVR	
Name	SnapAV Luma 500 NVR
System #	5395
Driver Version	7.3 Build 152.0 Rel
Driver Vendor	Elan
Device Type	SnapAV Luma 500 NVR
User Name	
Password	
IP Address	10 . 5 . 58 . 0
Port	0

### CREATE CUSTOM INTERFACE

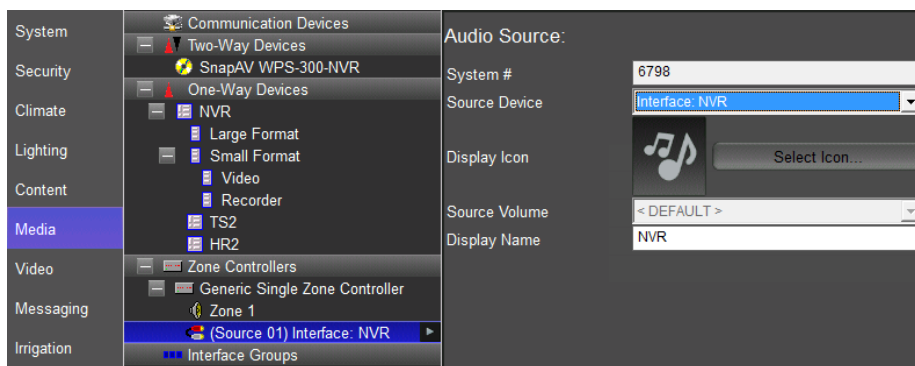
1. Under Sources, select **Add New Custom Source**.



2. Select the **SnapAV Luma** template and connect to **SnapAV Luma 500 NVR** added in previous steps.



3. Finally, add the source to the desired zone controller input as normal and arrange the appropriate selections to manage your Display source to select the SnapAV NVR monitor out for one-way control from the ELAN Viewer.



## **COMMON MISTAKES**

1. Setting incorrect Device ID. The Device ID in the Configurator must match the ID set in the changer's setup menu.
2. If no One-Way Interface commands are functional, authentication may have timed out on the SnapAV DVR. Use the Menu button and navigate to Login/Logout Menu, and select Login. UserID and Password should populate from ELAN credentials.
3. No communication. Verify all the proper settings in the source device (step 3 above) including IP Address, Username, Password, and Port (default Port is 80).