



ClareVue Lighting Devices Integration Release Notes

Content

Preface...1
Introduction...1
Installing the ClareVue devices...2
Pairing and configuring the devices in the apps...2
Pairing and configuring the device in Fusion...6
Using the device in the ClareHome app...11
Contact information...12

Last modified: 10/16/18

Preface

For information on Z-Wave and ClareHome, see [Installing Z-Wave with ClareHome](#).

Notes

- When installing Z-Wave devices, ensure that there is nothing inhibiting their signal. Z-Wave relies on radio signals. Metal or thick walls may limit their signal strength.
- We recommend having 2 or more repeating Z-Wave devices.

Introduction

The ClareVue Lighting devices integrate with ClareHome via the Z-Wave network. Installers only need to pair (add) the device to the ClareHome project.

By integrating the ClareVue devices into the ClareHome project, your customers can control the associated lights from their Android or iOS devices.

ClareVue models:

The following models are supported in this ClareVue Lighting release.

- ClareVue In-Wall Switch – CVL-IWS-10
- ClareVue In-Wall Dimmer – CVL-IWD-10
- ClareVue In-Wall Accessory Switch-Dimmer – CVL-IWA-10
- ClareVue Plug-In Dimmer – CVL-PLD-10
- ClareVue In-Wall Receptacle – CVL-IWR-10

Installing the ClareVue devices

Only qualified installation technicians should install ClareVue lighting devices. Follow the installation and programming instructions that came with your ClareVue devices.

Notes

- The devices are configurable using the ClareHome app, the Clare Controls Install Assist app, and Fusion.
- The ClareVue Lighting add-on/accessory device (CVL-IWA-10) communicates it's on/off state with the associated master through the physical 3- or 4-way traveler wiring. As such, they are not paired with the ClareHome system and only need to be installed by your electrician according to the installation instructions. When installed properly, the add-on and master devices will operate the 3- or 4-way circuit without regard to ClareHome. If they do not, check the wiring.

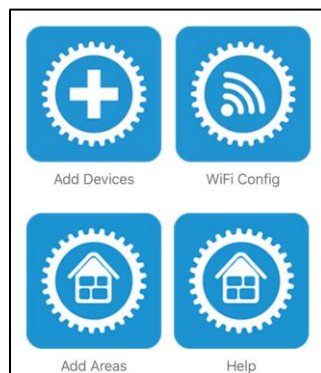
Pairing and configuring the devices in the apps

After installing the device, pair it.

To pair the ClareVue device using ClareHome or Install Assist:

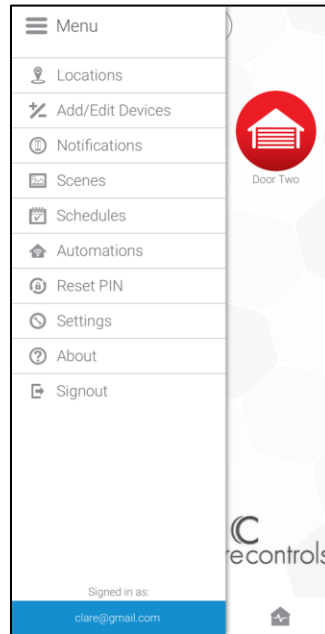
Note: The pairing process is the same for each device.


1. Access the Clare Controls Install Assist app, and then tap **Add Devices**.

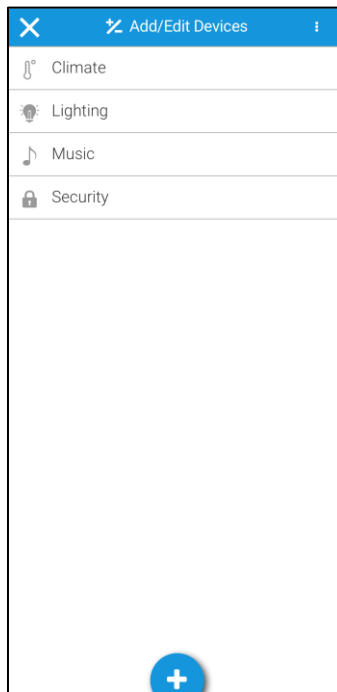


– or –

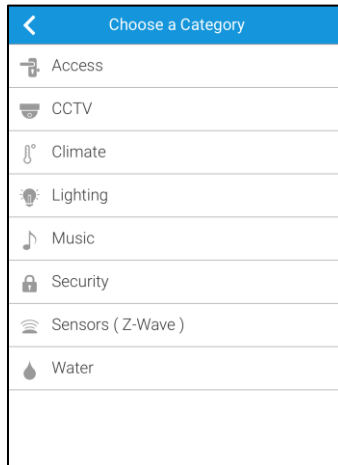
Access the ClareHome Mega Menu, and then tap **Add/Edit Devices**.



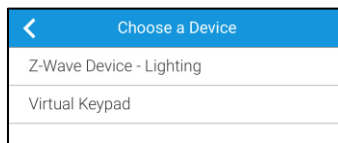
2. At the bottom of the screen, tap the plus icon .



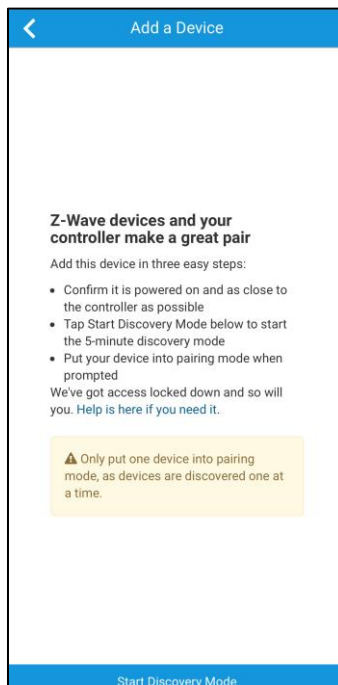
3. Tap **Lighting**.



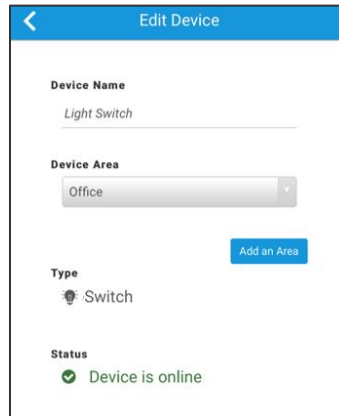
4. Tap **Z-Wave Device - Lighting**.



5. Tap **Start Discovery Mode**, and then pair the device as per the manufacturer's instructions.



6. Enter a name for the device, and then select an area.



7. Tap outside of the area drop-down, and the Z-Wave device is ready to use.
If using a dimmer, configure the settings.

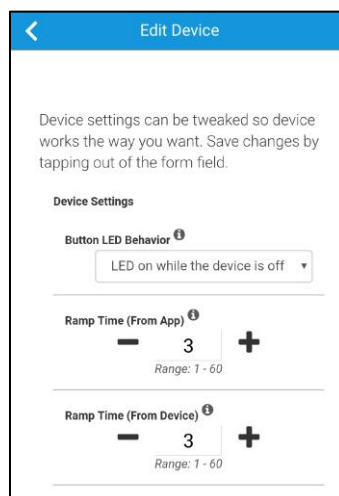
Note: For scene, schedule, notification, and automation configuration, see [ClareHome App Guide \(DOC ID 1750\)](#).

To configure the dimmer settings:

1. Tap **Edit Device Settings**.
2. Configure the device settings as desired.

Button LED Behavior: This setting allows the user to adjust the dimmer's physical LED behavior.

Ramp Time: (Dimmer only) The amount of time, in seconds, that it takes the dimmer to get to the set lighting level.




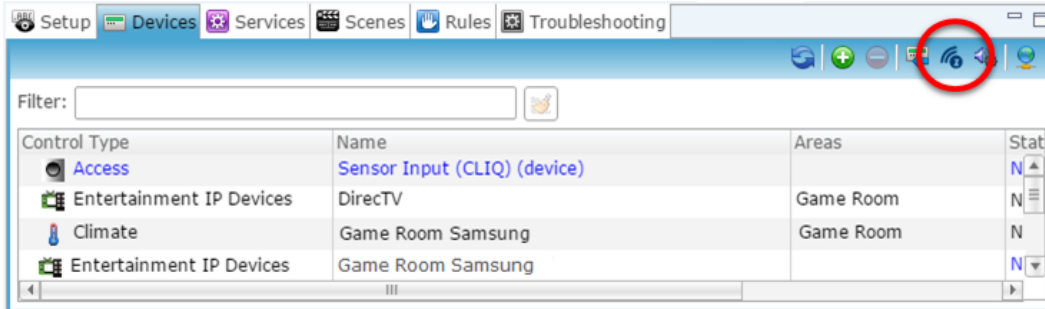
3. Tap outside of the drop-down menu/text field.
The device information automatically saves.

Pairing and configuring the device in Fusion

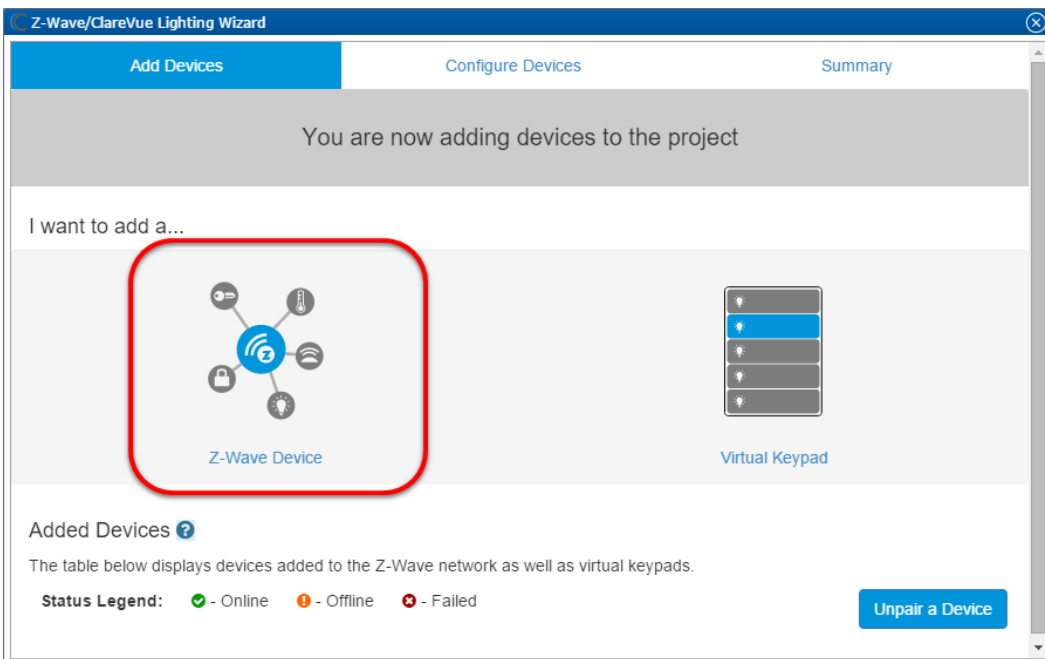
After installing the ClareVue device, pair it.

To pair the device with Fusion:

1. Access your project, and then click the **Z-Wave Wizard** icon .



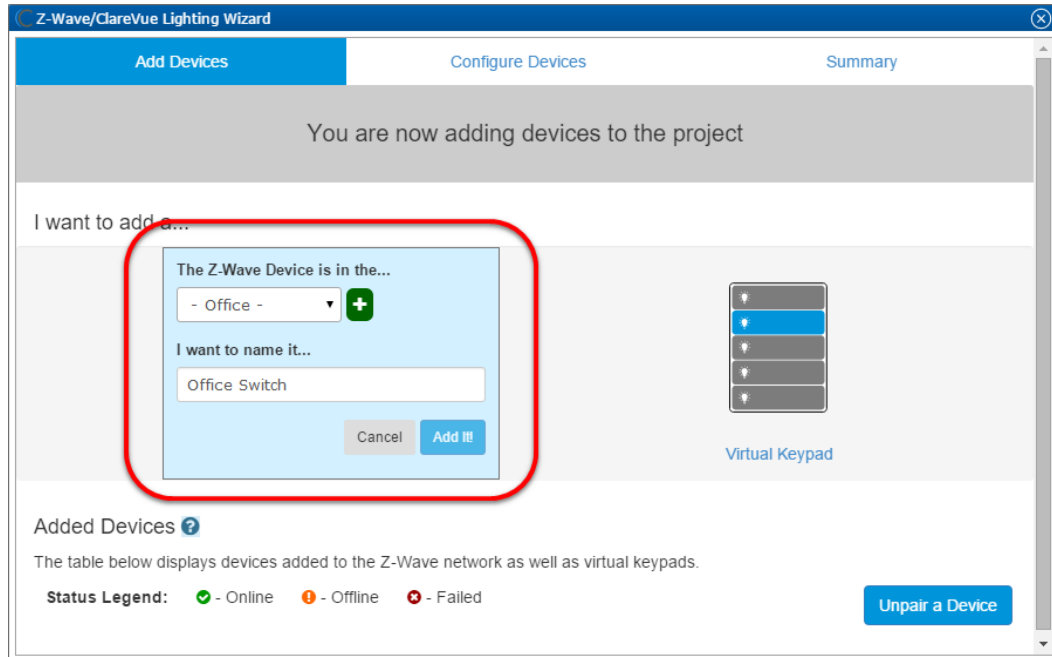
2. Click on **Z-Wave Devices**.



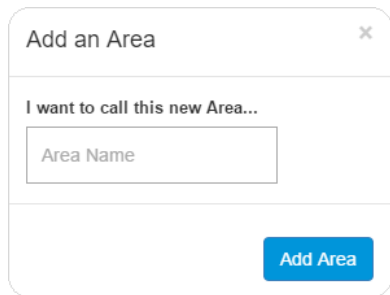
3. Select the device's location, and then enter a name for the device.

Notes

- We recommend naming the device after its location to avoid confusion. For example, Office Switch.

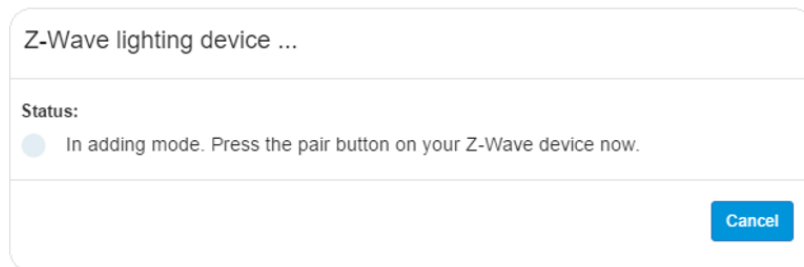


- If you want to add an area, click the green plus icon , enter a name for the area, and then click **Add Area**.



4. Click **Add It!**.

A Z-Wave adding mode dialog displays.

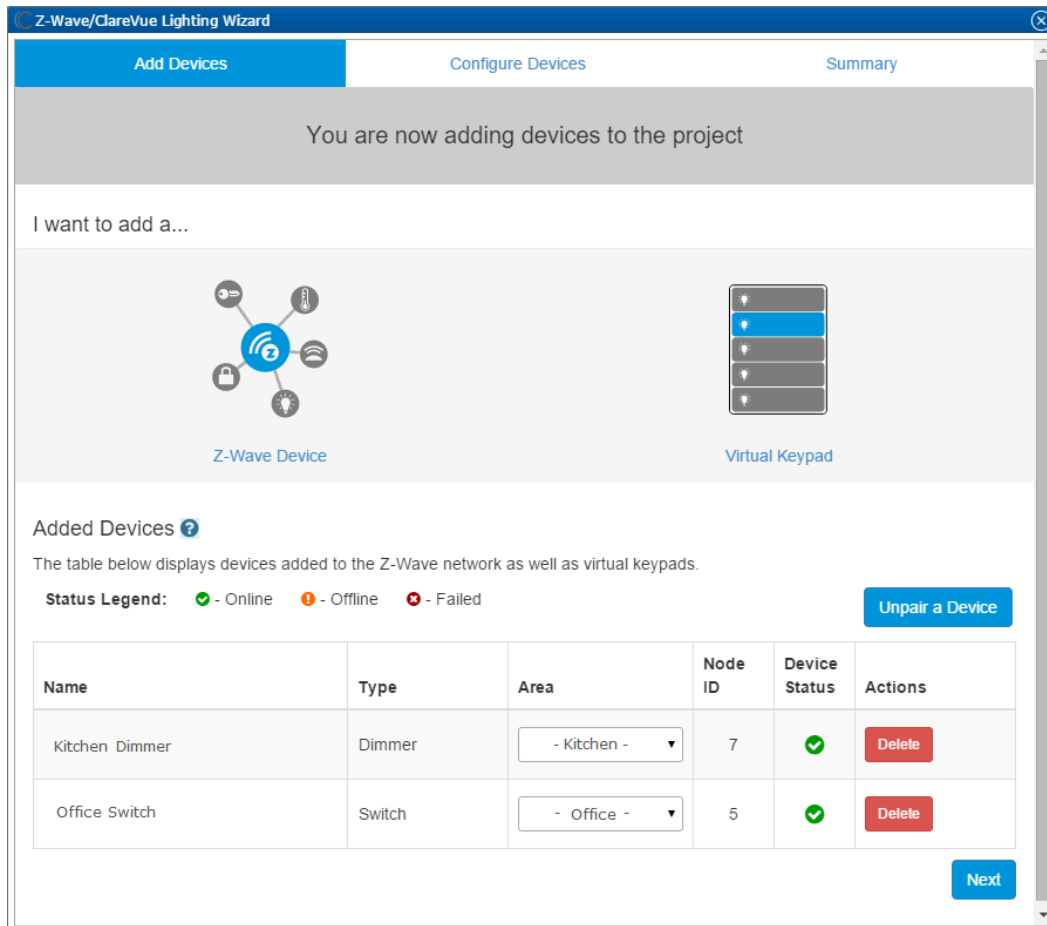


5. Press the main on/off button on the device.

Notes

- Once paired, the light stops blinking.
- The Z-Wave lighting device dialog goes away when the device has been paired.

6. The device appears in in the added devices list.

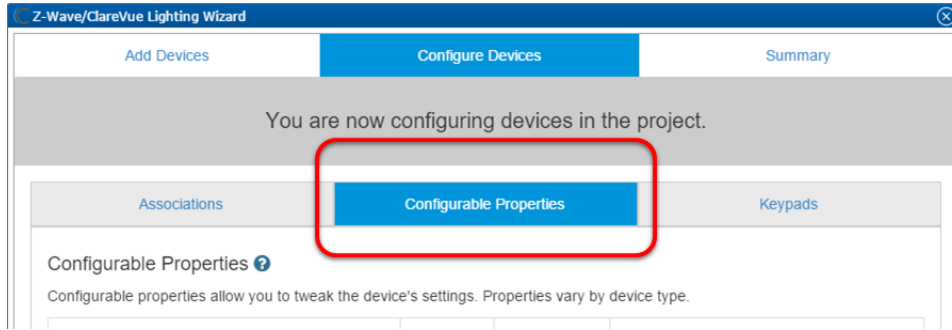


7. If you added a switch, click the **Summary** tab.

– or –

If you added a dimmer or accessory device, click **NEXT**.

8. On the **Configure Devices** tab, click the **Configurable Properties** sub-tab.



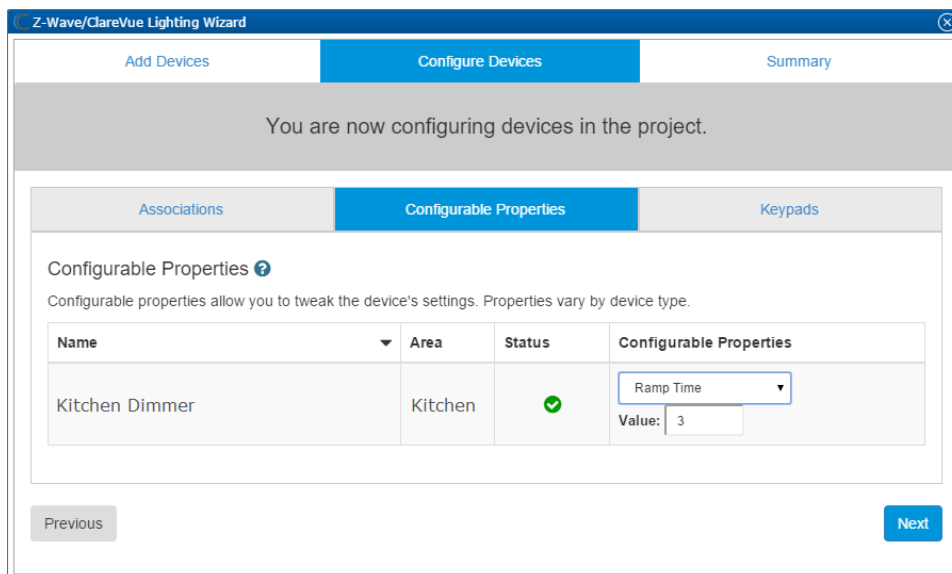
9. (Dimmer only) Configure the dimmer's properties.

Button LED Behavior: This setting allows the user to adjust the dimmer's physical LED behavior.

Ramp Time: The time in seconds that it will take to reach the maximum dimming level when turned on, and the time to ramp down when turned off.

Notes

- These settings should only be adjusted when the user experiences issues with dimmable LED or fluorescent lights.
- Adjusting these settings limits the amount of power that flows into the bulb, this may help the user save money on their electricity bill.



10. Click the **Summary** tab to view all Z-Wave Wizard added devices and their status.

Name	Type	Area	Status	Actions
Kitchen Accessory Dimmer	Accessory Dimmer	Kitchen	✓	Edit
Den Accessory Switch	Accessory Switch	Den	✓	Edit
Game Room Virtual Keypad	Virtual Keypad	Game Room	✓	Edit
Master Bath Dimmer	Dimmer	Master Bath	✓	Edit
Living Room Switch	Switch	Living Room	✓	Edit
Den Dimmer	Dimmer	Den	✓	Edit
Office Switch	Switch	Office	✓	Edit
Kitchen Outlet	Outlet	Kitchen	✓	Edit

11. Click the **Close Window** icon  in the top-right of the wizard to exit and return to the **Devices** tab.

Note: The Z-Wave devices added with the Z-Wave Wizard are automatically imported on the **Devices** tab.

Using the device in the ClareHome app

Once deployed, the user can add the device to their space, and then tap the lighting icon in the ClareHome app to display and operate the devices associated with the switch or dimmer, as shown below.

Note: Accessory devices do not have individual UI services. To use accessory devices from the app, control them through their associated master device.

Figure 1: Switch on and off

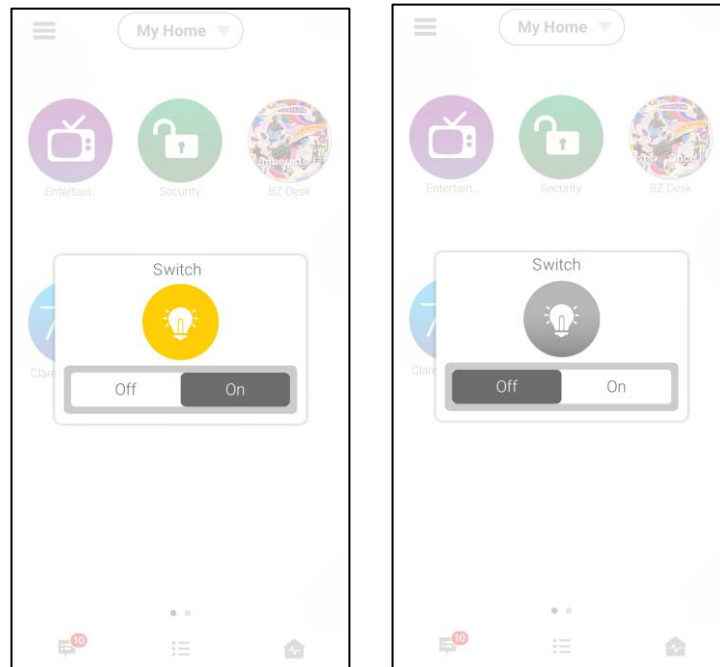
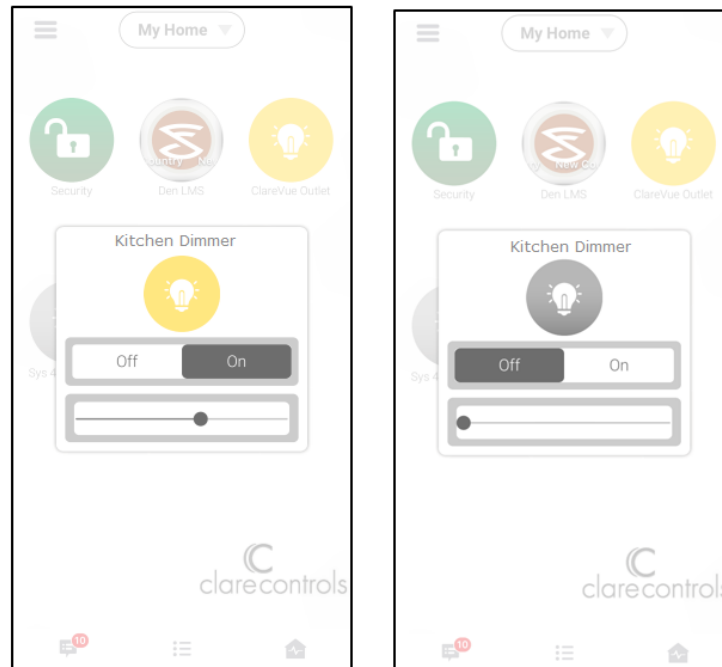


Figure 2: Dimmer at 60% and off



Contact information

Clare Controls, LLC.
7519 Pennsylvania Ave, Suite 104
Sarasota, FL 34243

General: 941.328.3991
Fax: 941.870.9646
www.clarecontrols.com

Integrator/Dealer Support: 941.404.1072
claresupport@clarecontrols.com

Homeowner Support (ClareCare): 941.315.2273 (CARE)
help@clarecontrols.com