



Virtual Officer

Install Guide

Warnings

Lives are at risk! Carefully observe these instructions while installing this equipment. Injury or death can occur if these precautions are not followed.

Licensed Electrician Required

The product must be installed and serviced only by a licensed electrician. Proper installation reduces the chance of electric shock, fire, and explosion in this product or products used with it.

Electrical Warnings

WARNING: To avoid electric shock, the unit must be grounded and installed in accordance with all applicable codes. The VO (Virtual Officer) casing is non-metallic and does not provide grounding.

Contacting power lines can be lethal. Assume all overhead lines are power lines. Poles, towers, guy wires, and cables can lean or fall and contact these lines. People can be injured or killed if they are touching equipment that contacts an electrical line. Ensure there is no possibility that equipment or personnel can come in contact with power lines, either directly or indirectly.

If anything comes in contact with a power line, don't touch it or attempt to move it. Instead, call the power company.

If a person is in contact with a power line and cannot move, do not touch that person or you may be electrocuted. Instead, use a non-conductive dry board, stick, or rope to push or drag them so that they are no longer in contact with electrical power. Once they are no longer contacting electrical power, administer CPR if you are certified, and request emergency medical aid.

Installation and Maintenance Warnings

The VO should only be serviced by licensed electricians.

WARNING: Secure the VO casing with a padlock when it is powered to prevent injury.

WARNING: Do not drill into the mounting board of the VO casing; there is critical equipment mounted on the rear side, which is not visible from the front.

WARNING: If you are mounting additional equipment, do not use screws, bolts or other hardware that pierce the casing or mounting board. Instead, use industrial-grade sticky tape and/or Velcro.

WARNING: Do not use a pressure sprayer to clean the VO casing or camera. The VO casing has ventilation openings at the bottom. Water, if sprayed upward to clean the box exterior, can get inside and destroy the electrical equipment.

General Safety

Important: Review the site before beginning installation to anticipate hazards.

Use safe procedures when installing equipment off the ground. Select equipment locations that allow safe, simple installation.

If an enclosure or pole falls, don't attempt to catch it. Stand back and let it fall.

Don't attempt to install an enclosure on windy days.

Don't work alone; a coworker can save your life.

Use approved non-conducting ladders and safety equipment. Ensure all equipment is in good repair.

Box Contents

- Mounting brackets for pole and wall mounting
- VO casing, which includes a thermal control unit, an Araknis 5-port switch, an NVR (its cover has been removed to improve cooling), and space for a router
- VI-M-7000 PTZ camera
- Steel cable lanyard
- Combination padlock

Other Required Equipment (not included)

- Mounting hardware (varies depending on where you mount it)
- Router (installed below the switch): **Note that the Virtual Officer has only tested for fit with the Digi TransPort model WR11. We cannot guarantee that any other router fits in the allocated space.**

Reusing the VO at a New Site

Once you are done with the VO at the job site, you can take it down and ship it to a new location.

When removing the VO from its install site, you must **first remove the PTZ camera from the mount arm. Do not remove the VO from its install site with the camera still attached.**

Also, to avoid damage to the electronics, **pack the PTZ camera and the VO casing into separate boxes.** Inadequate shipping procedures void your warranty.

Re-install the VO, and, if needed, have us set up your camera anew with our Virtual Technician service.

Setup

Read this entire section before beginning installation.

The system needs the following:

- 110/120VAC power with a ground fault circuit interrupter.
- Local network connection through a LAN, or a 3G/4G router.

Install the Router

Set up your network and router prior to the camera installation. Install the router in its designated location (see #7 on the diagram on the next page). If your router will be hardwired to the LAN, you can finish setup later.

If you are using a cellular modem, finish setting up the modem now. Open the VO casing, unplug the WattBox (see #4 on the diagram on the next page), and plug it into an extension cord to power your system. Once you have finished, plug the WattBox back into place.

Wall Mount Installation

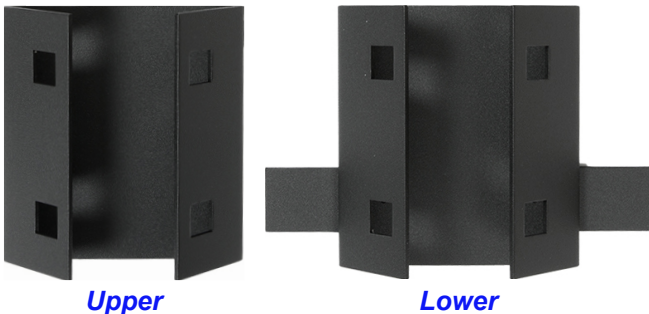
To mount on a flat surface, place the mount pictured below on the wall, with the open part of the grip facing upward. The VO casing hangs from this grip. Note that you must drill holes through the tabs on either end of the wall mount to attach it to the wall.



Once the mount is attached, hang the VO casing from this, then drill holes through the bottom tabs (just below the camera arm mount) and secure them to the wall as well.

Pole Mount Installation

Strap the upper pole mount bracket to the pole. Ensure that the open part of the grip is facing upward. The VO casing hangs from this grip.



Strap the lower pole mount bracket to the pole, lining up the tabs on the sides of the mount with the bottom tabs on the VO casing.

Hang the VO casing from the top mount, then bolt the camera tabs and mount tabs together.

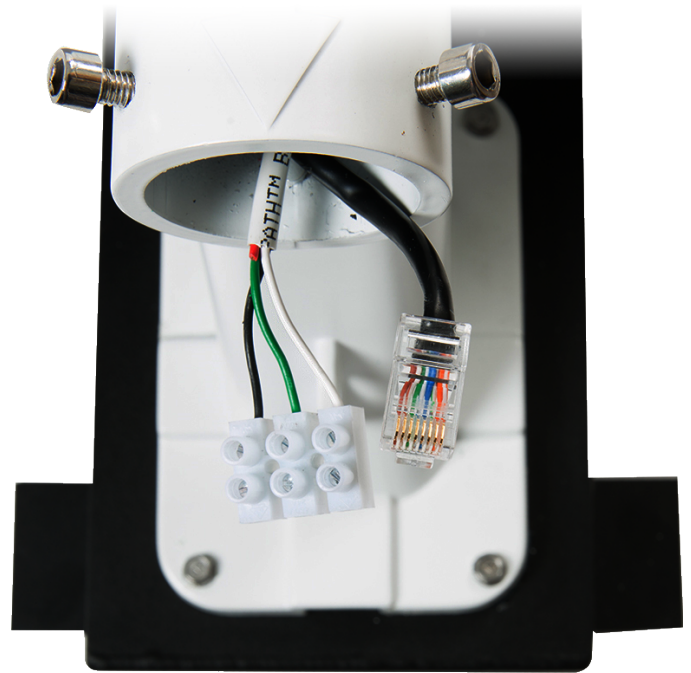
The final result is as shown here:



Attaching the Camera

Use the lanyard to hook the PTZ camera to the arm mount.

Connect the PTZ camera's LAN and 24VAC wires to the wires that extend out from the arm mount (for the power cable, the green wire is the ground). See the illustration below.



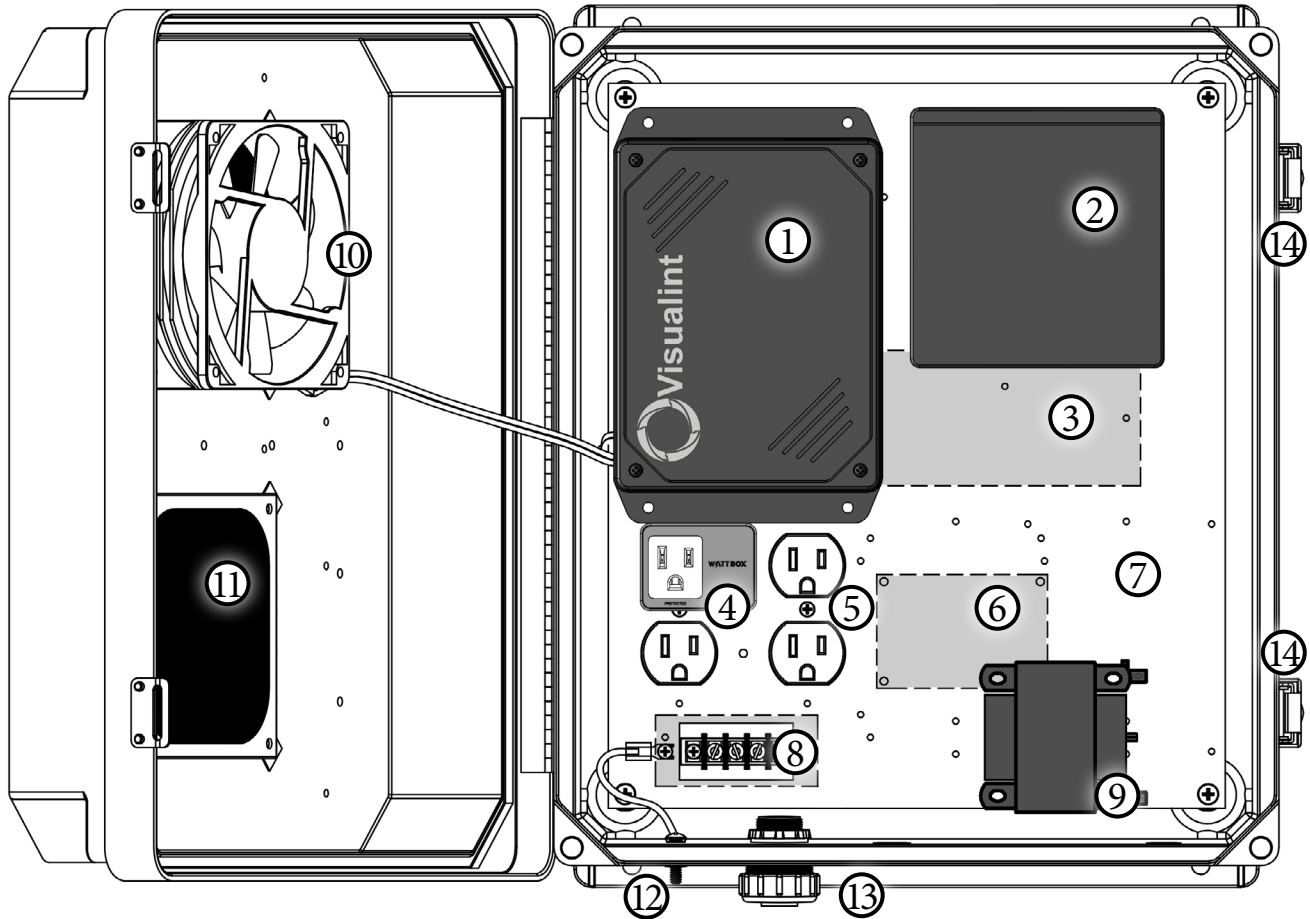
Slide the cabling into the arm mount.

Loosen the two screws on the arm mount, but do not remove them. Align the arrows on the PTZ and the arm mount, then twist the camera to secure it in place. Tighten the screws on the arm mount.

Configure the Analytics

Once the camera is operational and connected to your network, **contact your Visualint virtual technician** to set up the surveillance rules and analytics.

Anatomy of the Virtual Officer



- 1) Visualint Micro NVR
- 2) Araknis Switch
- 3) Heater (behind)
- 4) WattBox Surge Protectors
- 5) Spare Outlets
- 6) Control System (behind)
- 7) Space for Router Mounting

- 8) 120VAC Power
- 9) 24VAC Transformer
- 10) Cooling Fan & Filter
- 11) Mesh Screen Filter
- 12) Grounding Lug
- 13) Conduit Connector
- 14) Lockable Quick-Release Latches

Need Help? Contact Tech Support!

If you need further clarification, please email TechSupport@SnapAV.com. For more information, instructional videos, support documentation, or ideas, visit our website and view your item's product page at SnapAV.com.

3-Year Limited Warranty

This Visualint product has a 3-Year Limited Warranty. This warranty includes parts and labor repairs on all components found to be defective in material or workmanship under normal conditions of use. This warranty shall not apply to products that have been abused, modified or disassembled. Products to be repaired under this warranty must be returned to SnapAV or a designated service center with prior notification and an assigned return authorization (RA) number.

Copyright ©2017 by SnapAV. All rights reserved. SnapAV, Visualint, WattBox, Araknis, and all related marks and images are trademarks or registered trademarks of SnapAV.