

750 Series IP Bullet Cameras (White and Gray)



The WPS-750-BUL-IP Day/Night Outdoor IP Bullet Cameras provides full 1080 support with up to 8 times the resolution of analog models. Watch crystal clear video on PC and mobile devices, as well as streaming video on many popular control systems. Ideal for use in perimeter monitoring for both commercial and residential applications.

Features



High Resolution



IR/Sense-Up



Outdoor-Rated



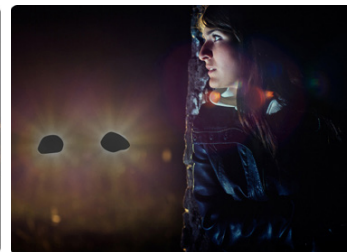
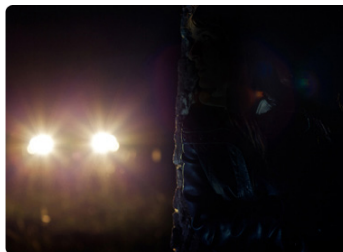
Wide Dynamic Range

High Definition Streaming

Delivers pristine video with resolutions up to 1920x1080 at a full 30FPS, with a true 16:9 widescreen view.

Sees in the Dark

Eliminates overexposure to evenly illuminate subjects in dark lighting, and displays bright images even in the dark.



Keeps Designated Areas Private

Blocks out sensitive or privileged areas defined by users to ensure privacy of controlled access areas or home interiors.



Provides Crisp, Clear Images

Uses Digital Wide Dynamic Range (D-WDR) to create even lighting and clear images in areas with lots of natural light, and features a digital signal processor that produces crisp, clean pictures.

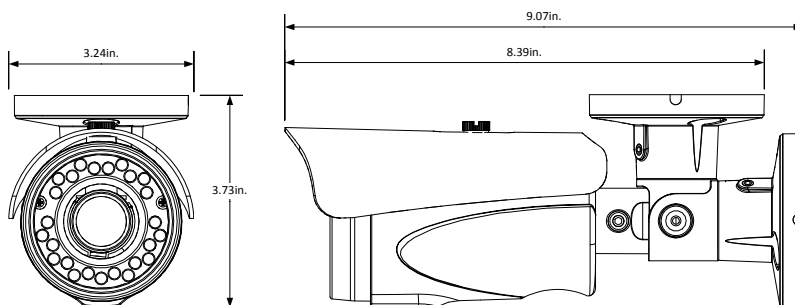


3-Year Limited Warranty

This camera has a 3-Year Limited Warranty. The warranty includes parts and labor repairs on all components found to be defective in material or workmanship under normal conditions of use. This warranty shall not apply to products which have been abused, modified, disassembled or improperly installed. Products to be repaired under this warranty must be returned to SnapAV or a designated service center with prior notification and an assigned return authorization number (RA).

750 Series IP Bullet Cameras (White and Gray)

DIMENSIONS



SPECIFICATIONS

Image Sensor	1/2.7" 2MP CMOS Sensor
Min. Illumination	0.5 lux @ F1.4 (IR Off) 0 lux @ F1.4 (IR On)
Video Resolution	1920x1080@30fps, 1280x720@30fps, 640x480@30fps, 320x240@30fps, 176x144@30fps
Lens	3.3 - 12 mm Mega Pixel Lens F1.4
Shutter Speed	1 / 5 ~ 1 / 10,000 sec
IR	65 ft.
Video Compression format	H.264/ M-JPEG/ MPEG4
Video Bitrates	CBR (Up to 8Mbps), VBR
Actions upon Triggers	Email, FTP, Save to micro SD card, Digital Output, SAMBA
Image Adjustment	Brightness, Contrast, Hue, Saturation, Sharpness
DNR	2D DNR
DC Iris	Yes
True Day/Night (IR Cut Filter)	Yes
AGC	Yes
Sense Up	Yes
Digital WDR	Yes
Flip	Yes
Mirror	Yes
Shutter Speed Adjustable	Yes
Day&Night Adjustable	Yes
Quad Streaming	Yes
Image Snapshot	Yes
Full Screen Monitoring	Yes
Privacy Mask	Yes
Motion Detection	Yes
Pre/ Post Alarm	Yes
Video Test Port	Yes

Setup Power Port	Yes
microSD Card Support	Yes, up to 32GB (Class 10)
Security	Password protection, IP address filtering, HTTPS encrypted data transmission, QoS/DSCP
Simultaneous Connections / Users	Up to 10
Ethernet	10/ 100 Base-T
Network Protocol	HTTP, HTTPS, SNMP, QoS/DSCP, Access list, RTSP, TCP/ IP, UDP, SMTP, FTP, PPPoE, DHCP, DDNS, NTP, UPnP, 3GPP, SAMBA, Bonjour
On Pigtail	1 Digital in and 1 Digital out (3pin Green Socket), DC-jack, 1 Audio in and 1 Audio out, male RJ45
Audio Compression	G.711(64K) and G.726(32K,24K) audio compression
Audio (Input and Output)	3.5mm x 1
Recording Triggers	Motion Detection, IP Ping failure, Network disconnect, Schedule, Digital Input
OS	Windows 7, Vista, 2000, XP, 2003, Microsoft IE 6.0 or above
Mobile Support	iOS 4.3 or above, Android 1.6 or above.
Hardware	Suggested Intel Dual Core 2.53G, RAM: 1024MB, Graphic card: 128MB
	Minimum Intel-C 2.8G, RAM: 512MB, Graphic card: 64MB
Operating Temperature	14°F ~ 113°F
Dimensions	3.24" W x 3.73" H x 8.39" D
Weight	1.98 lbs
Weather Rating	IP66
POE / Consumption	Yes - PoE IEEE 802.3af 3.84W(IR Off) / 7.56W(IR On)
12VDC Power Consumption	2.88W(IR Off) / 4.94W(IR On)
ONVIF	Yes
CE, FCC, RoHS	Yes

3-Year Limited Warranty

This camera has a 3-Year Limited Warranty. The warranty includes parts and labor repairs on all components found to be defective in material or workmanship under normal conditions of use. This warranty shall not apply to products which have been abused, modified, disassembled or improperly installed. Products to be repaired under this warranty must be returned to SnapAV or a designated service center with prior notification and an assigned return authorization number (RA).