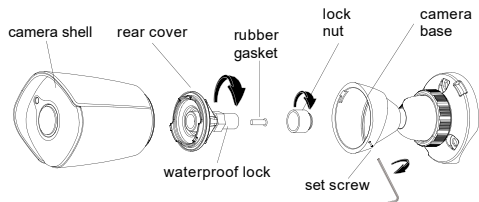
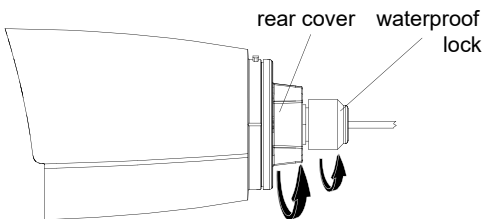


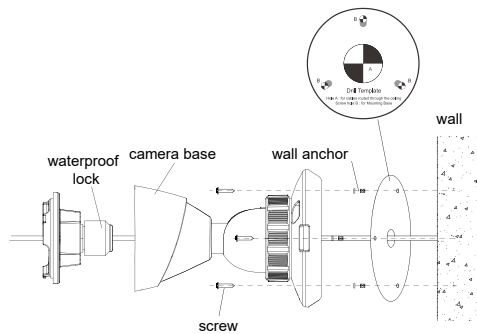
Installing the Bullet



Loosen (but do not remove) the set screw on the side of the camera. Remove the camera assembly from the base. Remove the rear cover. Open the waterproof lock and remove the lock nut and rubber gasket.



— 9 —



Using the adhesive template, drill 4.5mm holes for the wall anchors (marked B on the template). If needed, drill a hole for the cabling (marked A). If the cabling will run along the wall, mount the camera to a junction box.

If mounting on a pole, slip the straps through the slits on each side of the base.

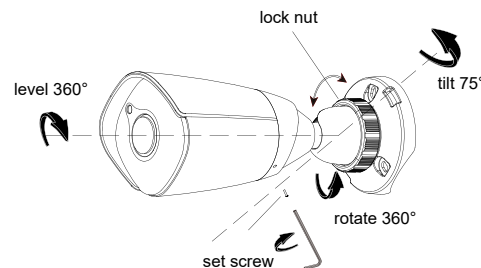
Slide the cabling through the rubber gasket and the waterproof lock.

Insert the wall anchors, then place the camera base in place and secure with screws.

— 10 —

Connect the network cable. If you are not using POE, connect the power line.

Reattach the rear cover. Insert the rubber gasket into the waterproof lock. Ensure the cabling is reasonably taut, then tighten the lock to create a good seal.



Attach the camera to the base by aligning the unlocked icons on the housing and base, then twisting until the locked icons align. Adjust the camera's aim, then tighten the set screw and lock nut.

— 11 —



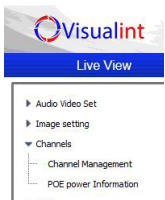
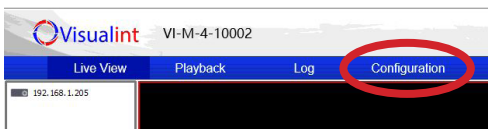
VI-3000 Series Quick Start Guide

VI-3000-BUL-S-WH
VI-3000-DOM-S-WH

Attaching to a Mini Maxx NVR

Plug the camera cable into the Mini Maxx NVR's PoE port.

From the NVR's main page, click on the configuration tab.



Navigate to Channels > PoE Power Information.

Click the checkbox next to the channel into which you plugged the camera, then press the Enable button at the bottom of the screen.

If your camera is plugged into the NVR via an external PoE switch, click the camera in the list of IP device shown in the top window, then check the appropriate channel's checkbox and press **Enable**.

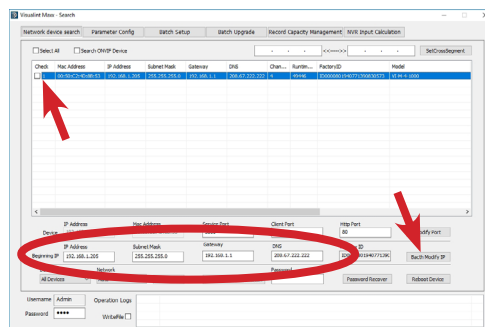
— 12 —

Attaching to a Line NVR

Download the *Visualint IP Finder* utility from the product page's support tab at SnapAV.com.

Install and run the utility to locate the camera.

Once the camera is located, select the camera by clicking the checkbox to the left of its entry. Then edit the camera's IP address, subnet mask, gateway and DNS to the settings desired for that camera. Press the **Batch Modify IP** button and the utility will change the settings and set the camera to static.



— 13 —

That done, go to the NVR's main page, then click on the configuration tab.

Navigate to Channels > PoE Power Information.

Click on the checkbox for the channel you want the camera to be, then press the Modify button. Enter the camera's IP address and its username and password. Leave all other items at their default values.

Click the **Enable** button at the bottom of the screen, and the NVR should pull all needed info from your camera and start displaying its feed.

— 14 —

Support

For help, email TechSupport@SnapAV.com. Information, instructional videos, support documentation, or ideas, visit our website.

3-Year Limited Warranty

This Luma Surveillance™ product has a 3-Year Limited Warranty. This warranty includes parts and labor repairs on all components found to be defective in material or workmanship under normal conditions of use. This warranty shall not apply to products that have been abused, modified or disassembled. Products to be repaired under this warranty must be returned to a designated service center with an assigned return authorization (RA) number. Contact technical support for an RA number.

Copyright ©2016–2017 by SnapAV. All rights reserved. Visualint, SnapAV, and all related marks and images are trademarks or registered trademarks of SnapAV.

Version 171024-1400

— 15 —

Read This Before Installing!

For maximum control and convenience, install your camera with a connection to the Internet via your NVR or through a local network router.

For installation using this guide, you must be able to access this camera through a personal computer. If your surveillance system is not on a network, you'll have to use the NVR's local interface for installation.

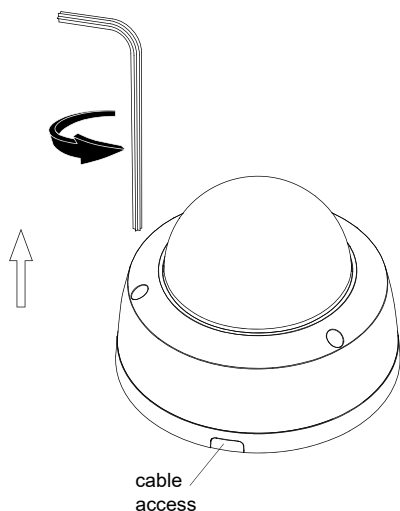
Safety Tips

- Handle this device with care. Do not strike or shake this device.
- Protect the power cord from being stepped on or pinched.
- Do not operate this device beyond its specified power ratings.
- Do not use this device near any heat sources such as radiators or stoves.
- Temperature affects the performance and lifespan of the camera and SD card. Use this in temperatures ranging from -30–140 °F.

— 1 —

Installing the Dome

Loosen (do not remove) the screws in the dome and open the camera. **CAUTION: Do not throw away the foam ring around the camera lens!** It prevents glare from the camera's infrared lights.



— 5 —

- Clean this device with a dry cloth. Do not use strong or abrasive detergents. If necessary, use a mild detergent and wipe gently.
- Save your configuration settings. This helps when changing the configuration, upgrading the device, or with recovery if unexpected failure or trouble occurs.

Required Equipment

- A network connection (and an NVR)
- Admin rights to a computer on the network
- Mobile device with Visualint Maxx Mini mobile app (recommended) or CCTV tester
- Power source: PoE or 12V DC
- Tools for mounting

Box Contents

- Camera
- Self-adhesive mounting template
- 3 x wall anchors with screws
- Phoenix power connector (bullet only)

Using the adhesive template, drill 4.5mm holes for the wall anchors (marked B on the template). If needed, drill holes for the cables (marked A on the template).

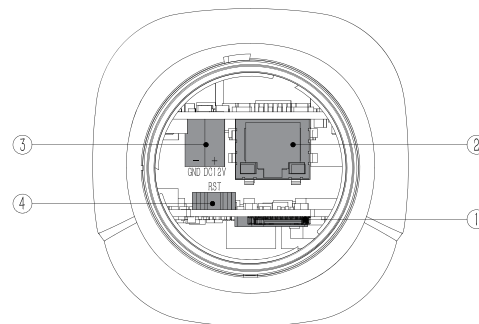
If the cabling will run along the wall, use a Phillips screwdriver to detach and remove the cable access (see below left).

In addition, before you terminate the cables, you must push the cable through the rubber blisters that plug the cable access holes. Do not use a tool to puncture the blisters; if you just push the category cable through, it will create a watertight seal.

— 6 —

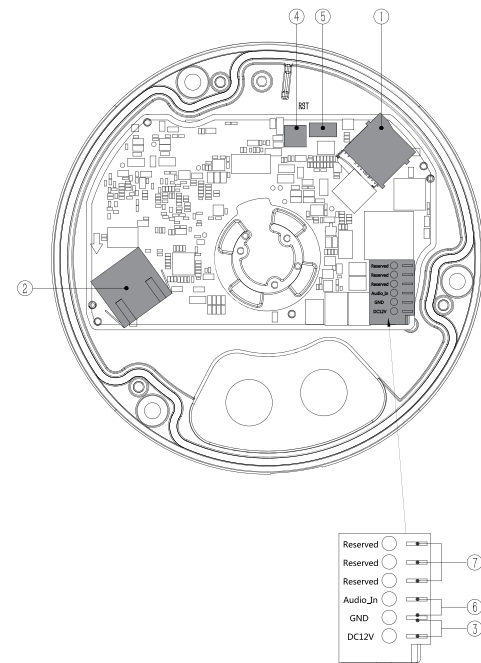
- Hex wrench
- Desiccant pack

Anatomy of the Cameras



- (1) Micro SD slot
- (2) Ethernet port
- (3) 12V power
- (4) Reset button (hold for 5 seconds to reset)
- (5) Microphone in
- (6) Audio in
- (7) Not for installer use

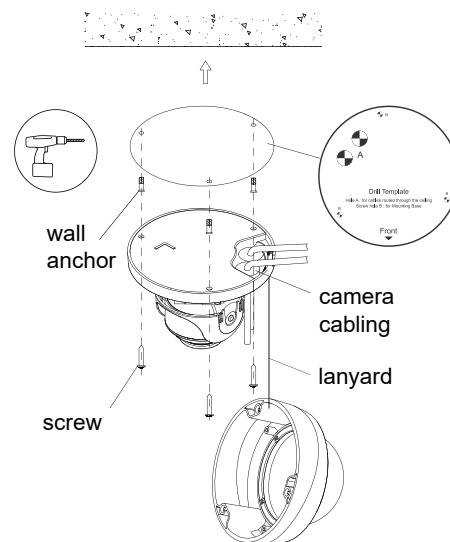
— 3 —



— 4 —

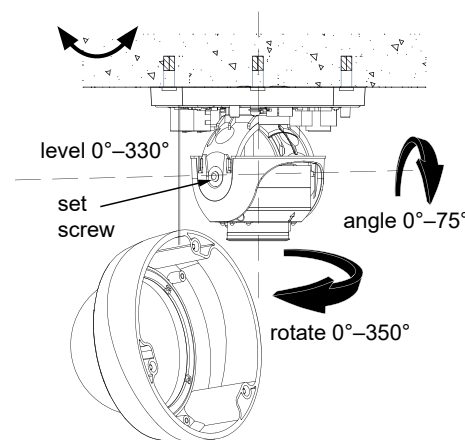
Insert the wall anchors, then place the camera base in place and secure with screws.

Connect the network cable. If needed, connect the power and audio cabling. Note that the power and audio share the same ground.



— 7 —

Remove the shroud around the camera and loosen the set screw. Aim the camera as desired, and tighten the set screw. Place the desiccant pack inside the camera where it won't interfere with the view, and replace the shroud.



Secure the dome cover to the camera, Remove the protective covering from the dome.

— 8 —