

Introduction

The Wirepath IP Surveillance app allows you to view video from encoders, IP cameras, and NVRs on your compatible Android or iOS smartphone or tablet. With basic network configuration, you can see live and recorded footage in the app from anywhere by using Internet access.

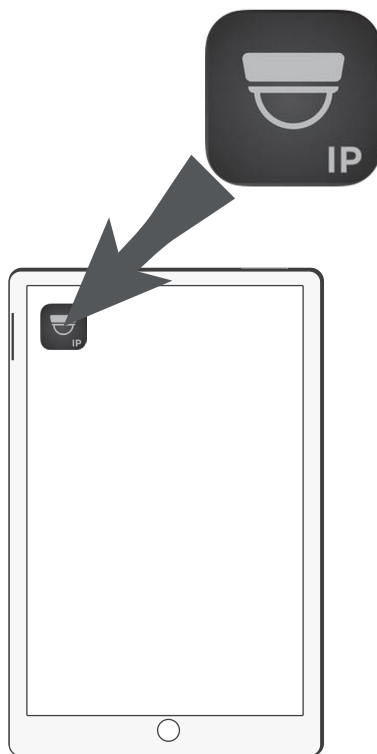
Setup Checklist

Install and configure all WPS-IP devices on the network before setting up the app and have the following information ready before continuing:

- Device name
- Static IP address (LAN)
- HTTP port number
- Device username
- Device password
- DDNS address (for remote access)

Step 1: Install the App

1. Visit the app store for your device and search for *WPS-IP*.
2. Download the app to the device.
3. Click the app icon to run the app.



Step 2: Add Devices

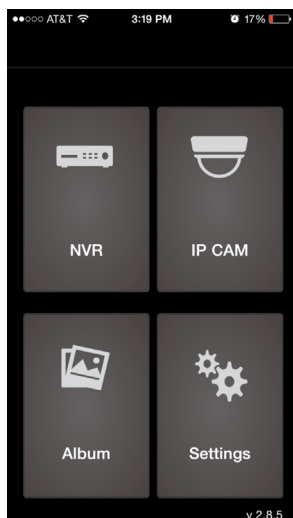
We recommend setting up two accounts in the app for cameras/NVRs that need to be viewed from both the LAN and the Internet:

- Set up a local account to access the camera/NVR at it's LAN IP address. Use this account when the smartphone/tablet is connected to the same network as the surveillance devices.
- Set up a remote account for Internet access using the DDNS address and port number. Use this address when the smartphone/tablet is away from the network (on a different WiFi network or wireless Internet). *Some networks may allow local access using the DDNS address. We cannot guarantee this with all setups. Set up remote accounts for guaranteed off-network connection.*

Local Account Setup

Connect your smartphone/tablet to the network before attempting to add local devices. Add encoders using the IP Cam selection.

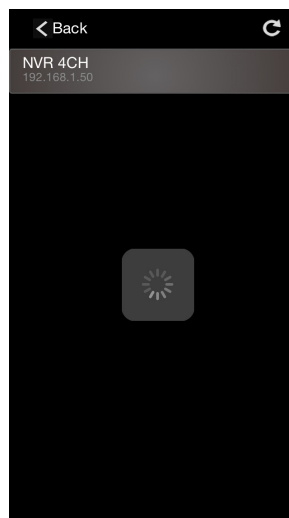
1. Select NVR or IP Cam from the home screen.



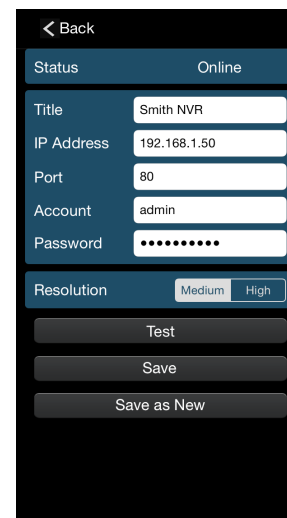
2. Click LAN Search at the bottom-right.



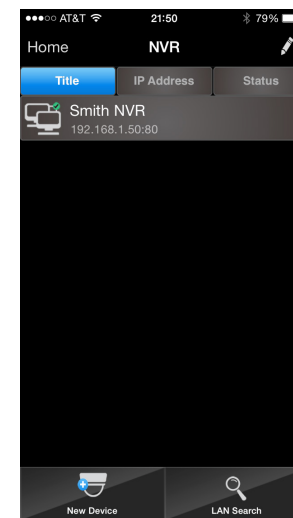
3. Select the device to be added from the list.



4. Review or modify device information, then click Save.



5. New entry may now be found in the Device List.



Repeat these steps for each LAN device connection. See the next page for instructions to add devices manually for remote connection.

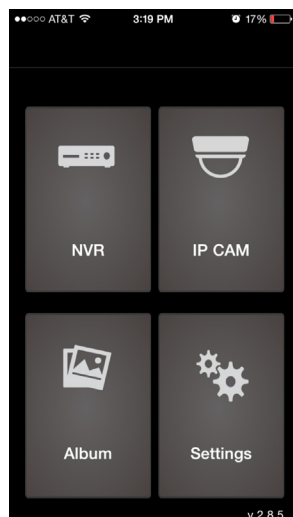
WPS-IP Surveillance App Setup Guide

Manual/Remote Account Setup

Set up accounts for local and remote cameras/NVRs.

Note: Set up a DDNS account to maintain a reliable connection to equipment. One DDNS account may be configured in one device, and reused by other devices on the same local network.

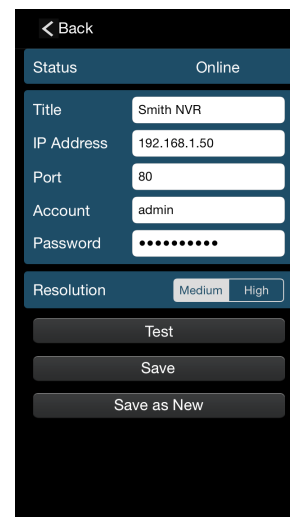
1. Select NVR or IP Cam from the home screen.



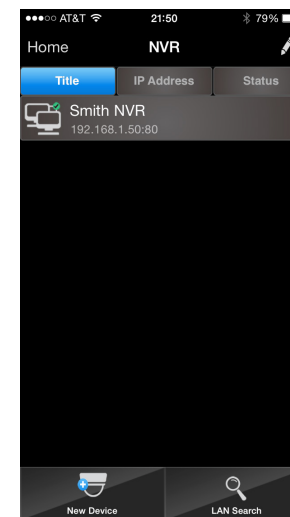
2. Click New Device at the bottom of the Device List.



3. Enter device information, then click Save.



4. New entry may now be found in the Device List.



If you need to add multiple devices with similar information, use the Save as New Feature:

1. From the Device List, press the edit button at the top-right (✎), then select a device to copy from the list.

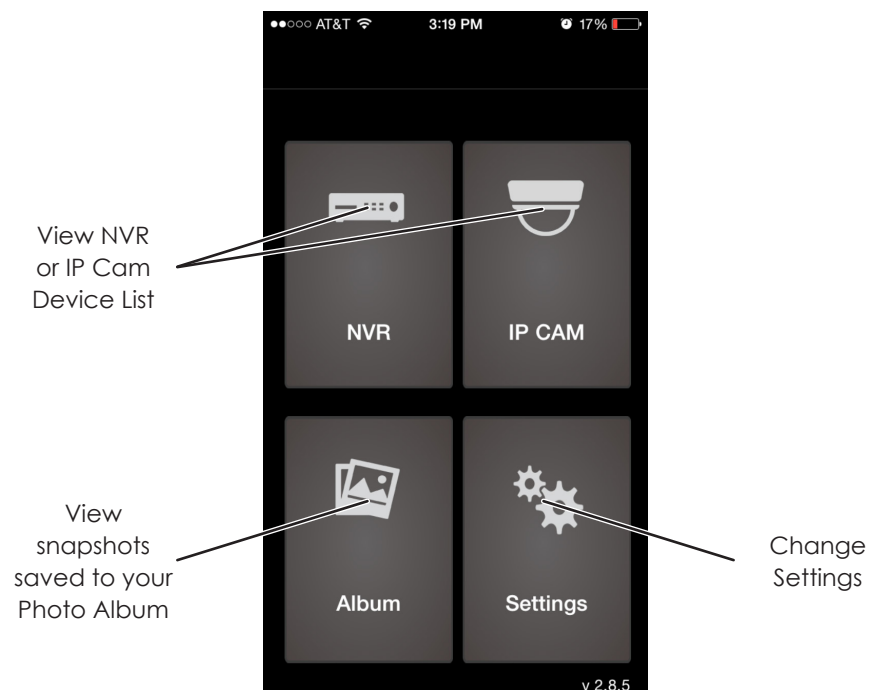
2. Change the information for the new device, then click Save as New to create a new entry in the device list.

3. New entry may now be found in the Device List.

Note: The User Guide is the next section of this document. Retain this section (Setup Guide) for your reference. The User Guide can be provided to the end user.

Using the Device Menus

Home Screen



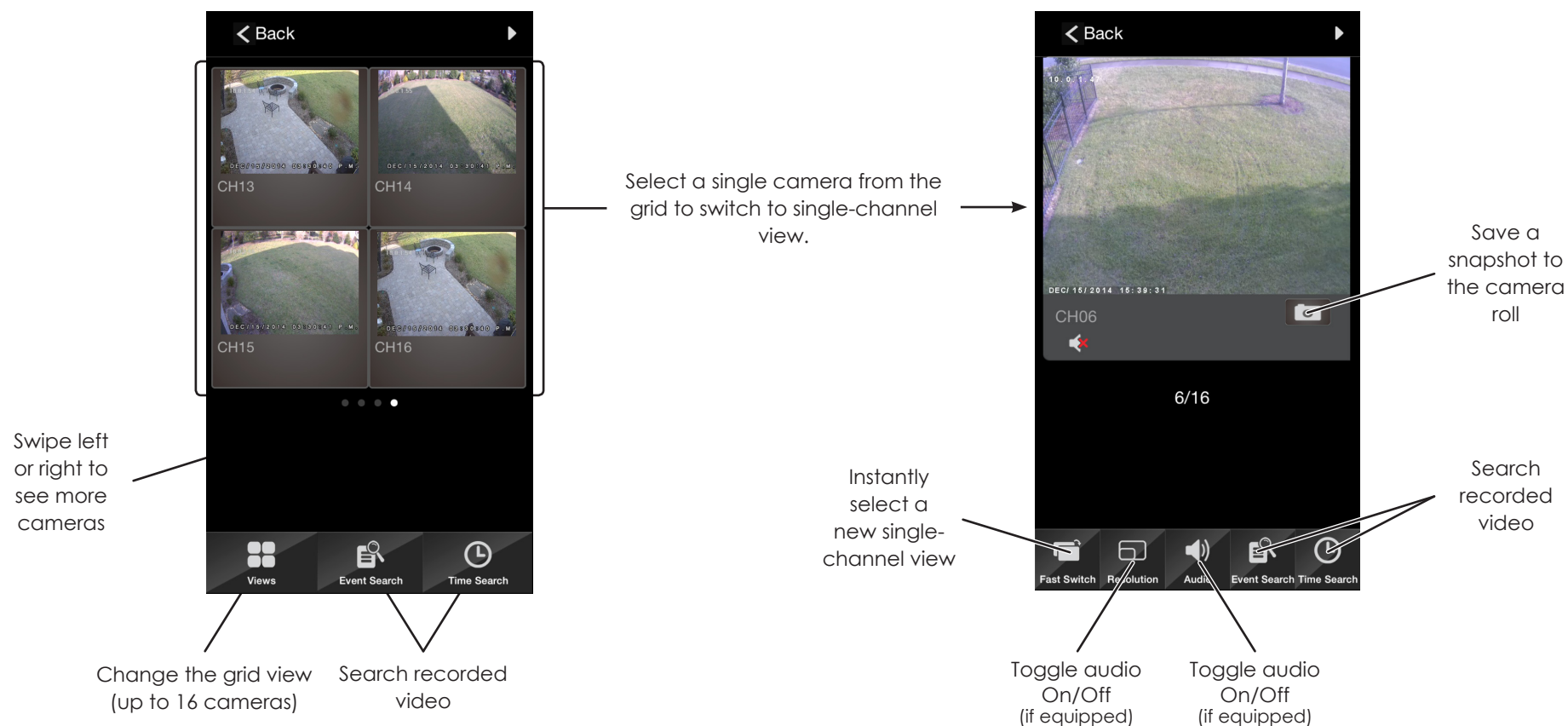
IP Cam/NVR Device List



Viewing NVRs

NVR Live View

NVR Single Channel
Live View



Rotate your device to see the menu or camera view in landscape mode.
(see next page)

Viewing Cameras

Camera Live View

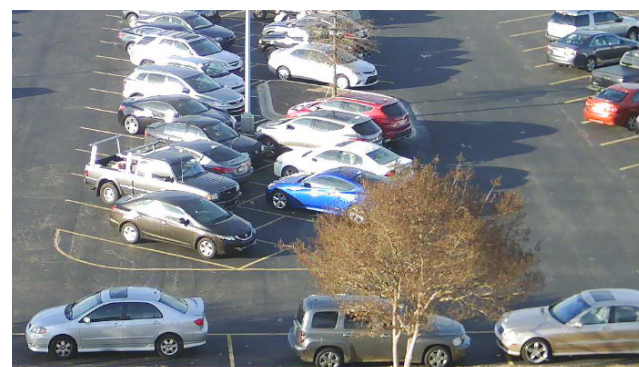


Viewing in Landscape Mode

Rotate your device to see the menu or camera view in landscape mode.

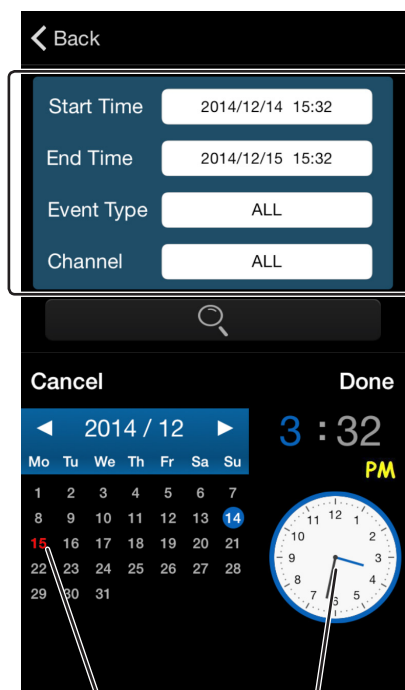


Pinch to zoom on any part of the image in both landscape and portrait mode.



Using the Search Functions

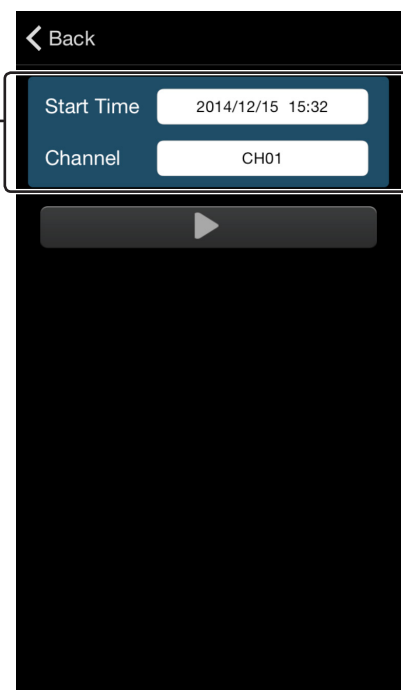
Event Search



The Event Search screen features a 'Back' button at the top left. Below it are four input fields: 'Start Time' (2014/12/14 15:32), 'End Time' (2014/12/15 15:32), 'Event Type' (ALL), and 'Channel' (ALL). A search icon is located below these fields. At the bottom, there is a 'Cancel' button, a calendar for '2014 / 12' with the 14th selected, and a clock showing 3:32 PM. A line points from the 'Set search parameters' label to the input fields, and another line points from the 'Select a date from the calendar' label to the calendar.

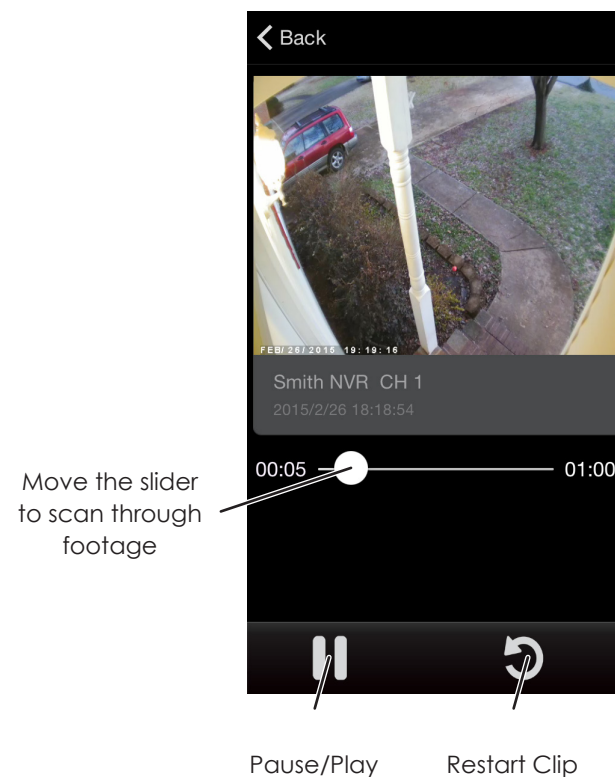
Set search parameters

Time Search



The Time Search screen features a 'Back' button at the top left. Below it are two input fields: 'Start Time' (2014/12/15 15:32) and 'Channel' (CH01). A play button is located below these fields. A line points from the 'Set search parameters' label to the input fields.

Playback Window



The Playback Window screen features a 'Back' button at the top left. Below it is a video player showing a red car. Below the video player is a timestamp 'FEB/26/2015 19:19:16'. Below the timestamp is a label 'Smith NVR CH 1' and a timestamp '2015/2/26 18:18:54'. Below the label is a slider with a white circle in the middle, showing '00:05' on the left and '01:00' on the right. Below the slider are two buttons: 'Pause/Play' and 'Restart Clip'. A line points from the 'Move the slider to scan through footage' label to the slider.

Select a date from the calendar

Move the clock hands to set the time

Move the slider to scan through footage

Pause/Play

Restart Clip