

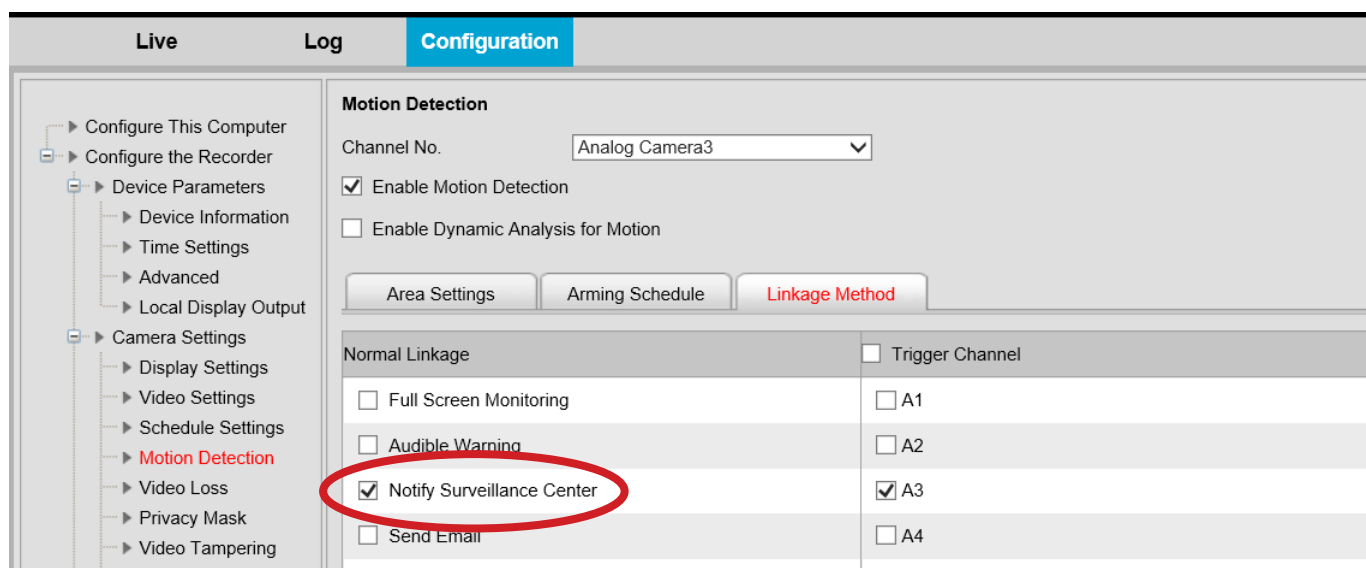
Using a Luma DVR as an Encoder

If you do not have an encoder, you can add the feed from an analog camera to your Luma NVR by pulling the feed from a Luma DVR.

Configuring the DVR

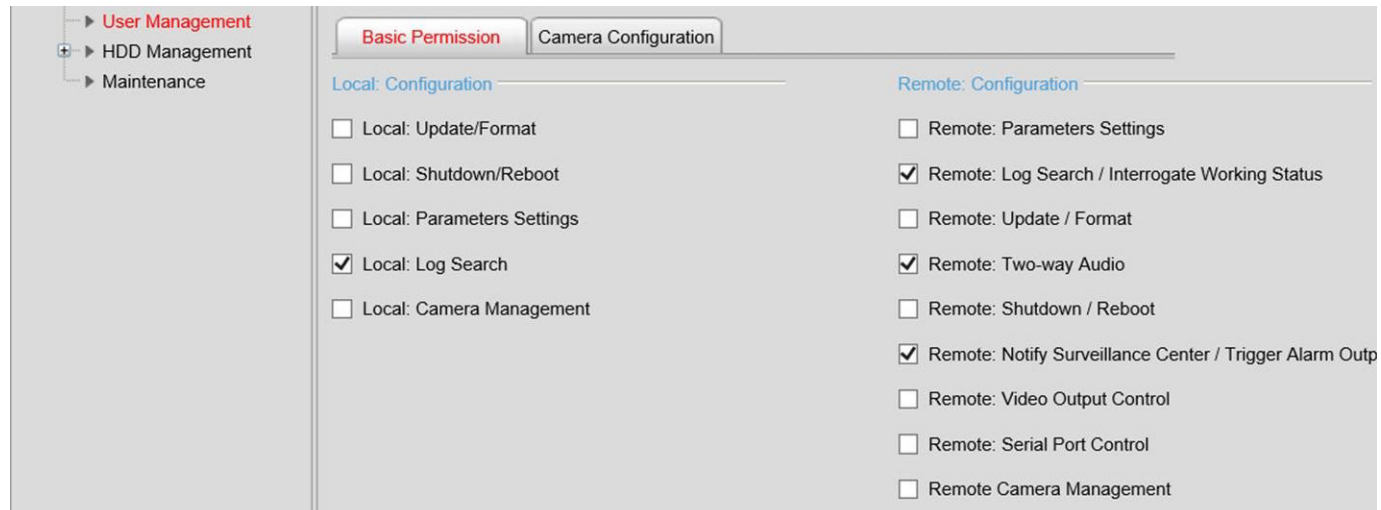
Connect the analog camera(s) to your DVR. Confirm that you can see the images from the analog camera through the Luma DVR's interface.

To send motion alerts from the analog camera to your Luma NVR, go to **Configure the Recorder > Camera Settings > Motion Detection**. Switch to the Linkage Method tab and activate the Notify Surveillance Center option for that camera.

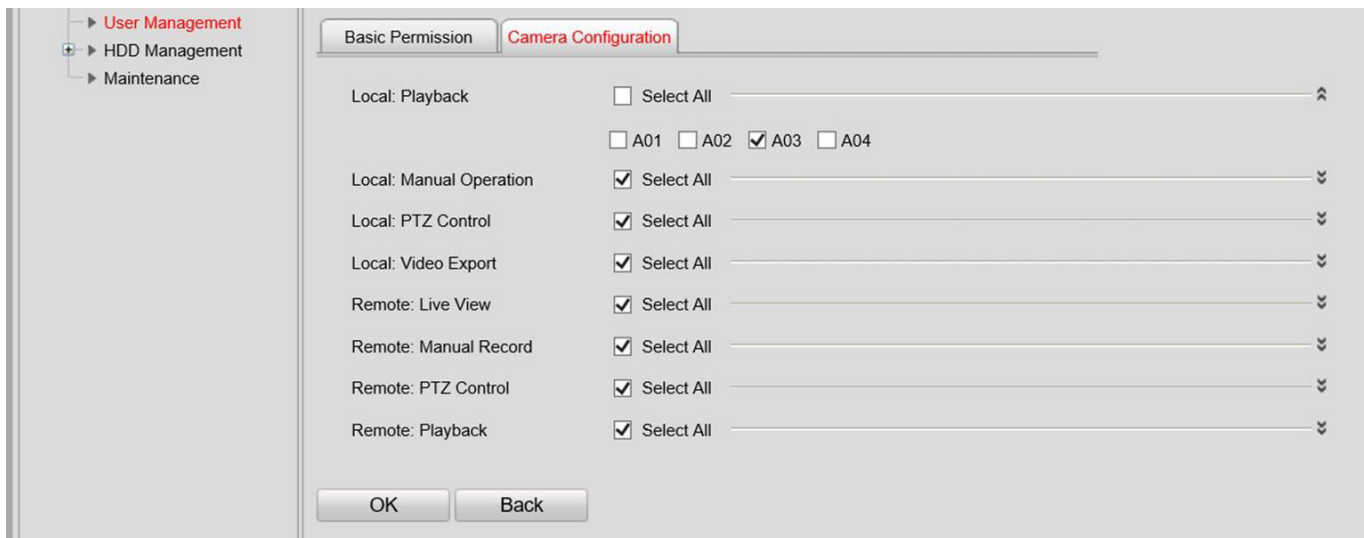


You can likewise activate the camera to send alerts for video loss detection and video tampering alerts by enabling the Notify Surveillance Center option under their menu options.

Next, create or modify a user account for the proper privileges. Navigate to **Configure the Recorder > User Management**. Click on the Basic Permission tab. Ensure that the user has, at minimum, the permission that are checked in the illustration below.



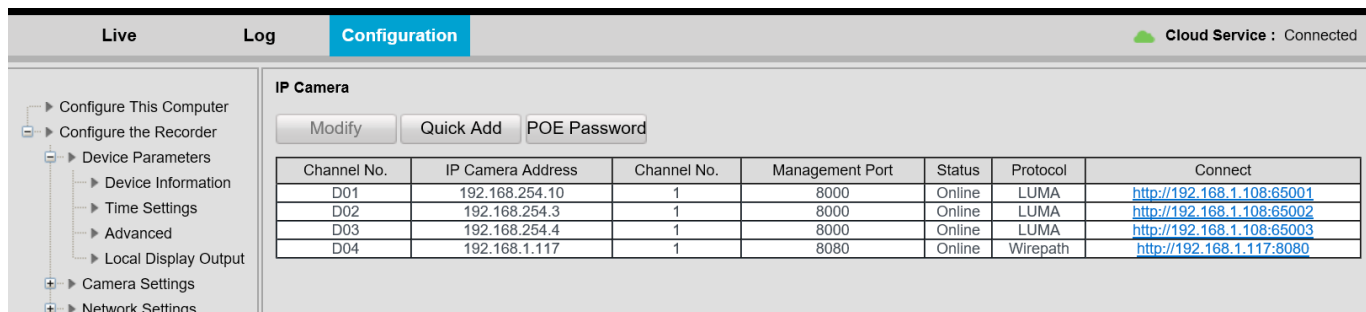
Next, select the Camera Configuration tab. Ensure that the user has access to the camera channel in question, and that all capabilities of that camera are enabled, as shown below.



Configure the NVR

Use the Luma utility to fetch the DVR's IP address and server port.

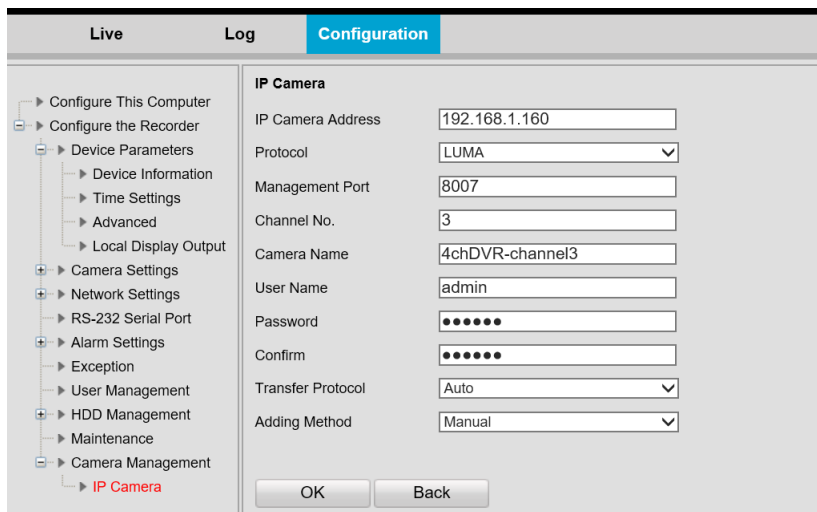
On the Luma NVR's web UI, navigate **Configure the Recorder > Camera Management > IP Camera**.



Click the channel's row in the table (not the hotlink) where you want to add the analog camera, then click **Modify**.

Fill out the form as described below.

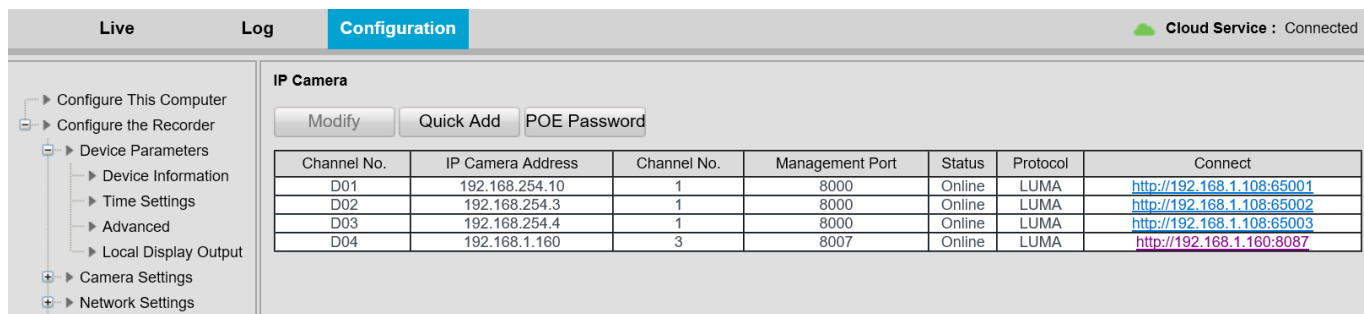
- **IP Camera Address:** Enter the IP address of the Luma DVR.
- **Protocol:** Select LUMA.
- **Management Port:** Enter the server Port of the Luma DVR.
- **Channel No.:** Use the channel *on the Luma DVR* that the analog camera is using. That is, to pull the camera that is plugged into channel 3 of a 16-channel DVR, enter 3.
- **Camera Name:** Use whatever is most helpful to you.
- **User Name:** Enter the desired user name of the DVR.



- **Password & Confirm:** Enter the password for that DVR user account.
- **Transfer Protocol:** Leave this set to Auto.
- **Adding Method:** Set this to Manual.

Press **OK** to save your entries.

The Luma DVR should now be working as an encoder.



The screenshot shows the 'Configuration' tab of the Luma NVR interface. On the left is a navigation tree with 'Network Settings' selected. The main area is titled 'IP Camera' and contains a table of camera configurations. Above the table are buttons for 'Modify', 'Quick Add', and 'POE Password'. The table lists four channels (D01-D04) with their respective IP addresses, channel numbers, management ports, status, protocols, and connection URLs.

Channel No.	IP Camera Address	Channel No.	Management Port	Status	Protocol	Connect
D01	192.168.254.10	1	8000	Online	LUMA	http://192.168.1.108:65001
D02	192.168.254.3	1	8000	Online	LUMA	http://192.168.1.108:65002
D03	192.168.254.4	1	8000	Online	LUMA	http://192.168.1.108:65003
D04	192.168.1.160	3	8007	Online	LUMA	http://192.168.1.160:8087

In this example above, the analog camera has been added to channel 4 of the Luma NVR.