



PRODUCT CATALOG

UPDATED 05/2021

SOLUTIONS FOR INTEGRATION PROFESSIONALS

RESIDENTIAL | COMMERCIAL | HOSPITALITY

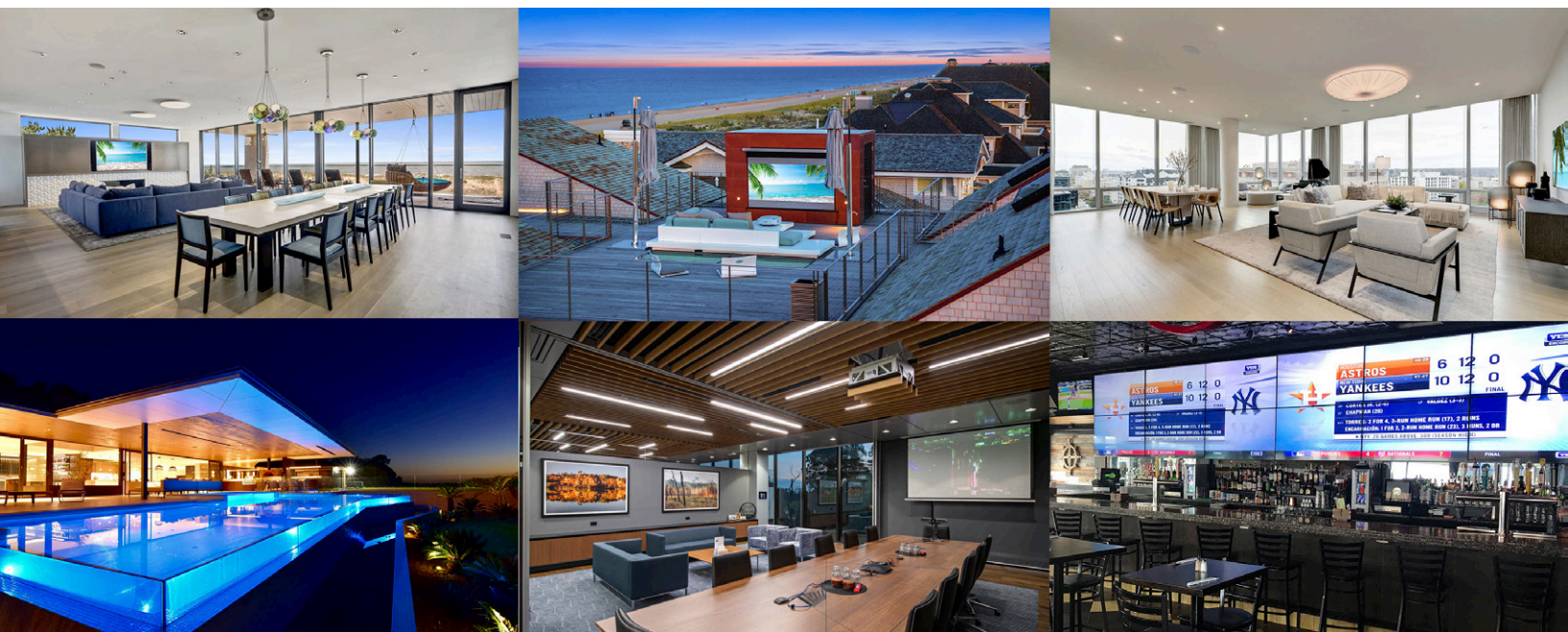


Table Of Contents & General Information

Table of Contents

Control Processors	3
Control Kits	5
Remote Controls & Apps	6
Touchpanels	10
Keypads.....	14
Custom Laser Engraving	16
Control Accessories - Control Modules	17
Control Accessories - Receivers & Antennas	20
Control Accessories - Power Supplies.....	21
Control Accessories - Dealer Tools.....	22
Audio Distribution	24
Video Distribution - Video over IP.....	29
Video Distribution - HDBaseT.....	32
Video Distribution - HDMI	35
Collaboration	36
Multiviewer.....	40

Contact Information

Remote Technologies Incorporated
5775 12th Avenue East, Suite 180
Shakopee, MN 55379
www.rticorp.com

Main - 952-253-3100 / Fax - 952-253-3131
Sales - 952-253-3106
Customer Service - 952-253-3136
Technical Support - 952-253-3137

Training

RTIXCEL Training Academy is designed to provide the custom installation professional with many training options to accommodate a busy schedule. From integration fundamentals to advanced multi-room AV programming, dealers at every experience level will learn the essential knowledge they need to succeed in today's world of automation. Whether onsite, online or a comprehensive three-day training held at the RTI headquarters, dealers have the options to take their expertise and their business to the next level.

Visit the RTI website dealer portal to access the RTIXCEL Training Academy

Warranty

NOTE: For complete warranty information please consult the product operation/installation guide.

Remote Technologies Incorporated warrants its products for a period of three (3) years from the date of purchase from an authorized Remote Technologies Incorporated distributor. Rechargeable batteries carry a one (1) year warranty. Warranties apply only to those products sold through authorized RTI dealers. Any product found to be defective can be exchanged at an authorized RTI distributor within 90 days of purchase. After 90 days, all products must be returned to RTI for repair, after receiving a Return Authorization from RTI Customer Service.

Service:

RTI products not covered by warranty can be repaired for a fee by obtaining a Return Authorization number from RTI Customer Service. The Return Authorization number should be referenced on the shipping carton and a copy of the Return Authorization form should accompany the product in the shipping carton. Products returned for service may be repaired or replaced at RTI's discretion.

Disclaimer and Copyright Information

- All rights are reserved. No part of this document may be photocopied, reproduced, or translated without the prior written notice of Remote Technologies Incorporated.
- The information contained in this document is subject to change without notice. Remote Technologies Incorporated shall not be liable for errors or omissions contained herein or for consequential damages in connection with the furnishing, performance, or use of this product reference guide.
- Windows is a registered trademark of Microsoft Corporation in the United States and other countries.
- Zigbee is a registered trademark of the Zigbee Alliance.
- Z-Wave is a registered trademark of Sigma Designs Inc.
- Apple, iPod touch, iPhone and iPad are registered trademarks of Apple Inc.
- Android and Google Play are registered trademarks of Google Inc.
- Integration Designer and the RTI logo are registered trademarks of Remote Technologies Incorporated.
- Other brands and their products are trademarks or registered trademarks of their respective holders.

XP-8v Advanced Control Processor

The XP-8v is a high-end remote control processor for automating the operation of electronic systems such as A/V, lighting, security and HVAC in homes and office buildings. The third generation of the popular XP-8v advanced control processor, the accelerated XP-8v kicks control into high-gear with even more processing power, additional memory and an HDMI output for an OSD (on-screen-display) interface. Increased performance combined with a real time/multitasking operating system, tremendous expandability and compatibility with any RTI controller or app, make the XP-8v the perfect solution for large-scale and complex projects.

Part #: 10-210618-19



Key Features

- Powerful 32bit, 1GHz CPU and 512Mb of non-volatile Flash memory.
- HDMI output for OSD provides bidirectional control interface on a TV.
- Eight multi-purpose I/O ports for infrared and RTI modules for power sensing and one-way RS-232.
- Ethernet port allows two-way control via IP and RTiPanel support.
- Eight dedicated RS-232 ports allow bi-directional control.
- Eight programmable relays may be programmed for contact or voltage trigger.
- Eight sense inputs allow events to be triggered from either a contact closure or voltage trigger.
- Compatible with RTI ZM-24 2.4GHz Transceiver Module (utilizing Zigbee® technology), RM-433 Antenna Module and wired user interfaces.
- USB and Ethernet programming.

Installation Notes

- In the box: XP-8v, power supply (12V, 1A), RJ45 to DB9 serial adaptor (8), rack ears (2) with screws, feet (4) with screws, terminal blocks (3x 4-position, 3x 2-position).

Specifications

Power Supply	+12VDC, 1.0A
Multi-Purpose Output Ports	Eight custom 3.5mm 4-conductor jacks
	Designed for RTI modules as well as industry-standard IR emitters.
IR Output Drive	100mA maximum (per port, adjustable)
	200mA maximum (high IR output port)
Infrared Frequency Transmission Range	15kHz - 460kHz
Video Output for OSD	HDMI 720p/1080p
Relays	Eight, 3 Amps @ 30 VDC or 12V/100mA Trigger
Sense Inputs	Eight, Analog/Digital/Closure
RS-232 Ports	Eight, RJ45 Connections
Ethernet Port	10/100Base-T, RJ45 Connection
RTI Com Port	2.4GHz Zigbee Communication Port, RJ45 Connection
USB Ports	Two Host, 1 Programming
Expansion Port	RS-485 / IR / PWR
Memory Expansion	SD/MM Card Slot
Display	High-contrast STN LCD, 0.7 in x 2.8 in (18mm x 60mm)
Mounting	Rack-mount or free standing (Wings and feet included)
Dimensions (W x H x D)	17 in (432mm) x 1.7 in (43mm) x 6.4 in (162mm)
Weight	4 lb. (1814g)
Warranty	Three Years (Parts & Labor)

XP-6s Advanced Control Processor

The XP-6s is the powerful centerpiece of any professionally installed control system, designed to automate and enhance the operation of A/V, security, lighting, HVAC, and countless other devices in a commercial or residential environment. The XP-6s is packed with features to facilitate integration of third-party devices into one seamless and cohesive system, with a variety of communication options such as RS-232, relay, IP, and routable IR control. Additional RTI accessories can be incorporated to allow wireless communication between an RTI remote control and the XP-6s, even through walls or cabinets. The processor features built-in support for the RTI 433-MHz receivers for one-way RF communication, or powerful ZigBee 2.4-GHz transceivers can be incorporated for more sophisticated bi-directional communication between the RTI controller and central processor and supported devices.

Part #: 10-210621-13



Key Features

- Powerful 32bit, 1GHz CPU and 512Mb of non-volatile Flash memory.
- Six multi-purpose I/O ports for infrared and RTI accessory modules for power sensing and one-way RS-232.
- Ethernet support for two-way control and RTiPanel support.
- Three programmable 12VDC trigger outputs.
- Three assignable voltage sense inputs and three programmable relay outputs.
- Three RS-232 ports for bi-directional communication.
- Built-in astronomical clock for time-based events and sleep timers.
- Compatible with all RTI wireless interfaces (when used with RTI RF antennas/Zigbee® transceivers) and wired user interfaces.
- Inputs for connection of multiple 433MHz RF receiver modules and one ZM-24 2.4GHz Transceiver.
- Fast USB 2.0 and Ethernet programming.

Installation Notes

- In the box: XP-6s, power supply (12V, 1A), RJ45 to DB9 serial adaptor (3), screws & drywall anchors (4), terminal blocks (3x 4-position, 3x 2-position), rack ears (2).

Specifications

Power Supply	+12V DC, 1A
IR Output Ports	Six 3.5mm jacks, Compatible with industry standard IR emitters
IR Output Drive	100mA maximum (per port, adjustable)
	200mA maximum (high IR output port)
Infrared Frequency Transmission Range	15kHz - 460kHz
Trigger Outputs	Three, 12 VDC, 100mA max each
Sense Inputs	Three, 3-24VDC
RS-232 Ports	Three, Bi-directional RJ45 Connections
Ethernet Port	10/100Base-T, RJ45 Connection
USB Ports	One, Programming
Control Port	RS-485 / IR / Pwr, RJ45 Connection
RTI Com Port	2.4GHz Zigbee Communication Port, RJ45 Connection
Relays	Three, +30VDC, 5A max
Mounting	Rack-mount or free standing
Dimensions (W x H x D)	6.39in (162.3mm) x 6in (152.4mm) x 1.72in (30.5mm)
Weight	2 lb. (907g)
Warranty	Three Years (Parts & Labor)

XP-3 Advanced Control Processor

Boasting a powerful 533MHz CPU and 128MB of non-volatile flash memory, this processor packs a big punch at a moderate price. With a built-in ZigBee® transceiver and support for wireless bi-directional communications, the XP-3 can provide the user with rock-solid control and feedback from devices such as music servers, lighting, security, and much more. For complete control in any room, the XP-3 even allows powerful two-way control with Ethernet enabled RTI wired user interfaces, and full support for the RTIPanel App.

Part #: 10-210443-15



Key Features

- Powerful 32bit, 533MHz CPU and 128MB of non-volatile Flash memory.
- One multi-purpose I/O port and two IR output ports with variable output.
- Two assignable voltage sense inputs, and two programmable relay outputs.
- One two-way RS-232 port for bi-directional communication.
- Integrated 10/100Base-T Ethernet port for programming, control and two-way communication with compatible devices and supports Power over Ethernet (PoE).
- Built-in astronomical clock for time-based events and sleep timers.
- Built-in 2.4GHz ZigBee® RF transceiver module and removable antenna.
- Configurable for communication with RTI in-wall products and 433MHz wireless controllers using a separate RTI RM-433 Antenna - **See Notes below.**

Installation Notes

- RTI RK2 In-Wall Keypad and SURFiR remote in 433MHz mode are NOT supported with the XP-3.
- Using a 433MHz RTI remote control requires a separate RM-433 Antenna to be connected to the XP-3. Also, while this configuration is possible, its use should be limited to secondary zones that aren't heavily used (guest rooms, outdoor areas etc). Installations requiring primary control via 433MHz controllers should use an RP-4, XP-6s or XP-8v control processor.
- In the box: XP-3, power supply (12V, 1A), RJ45 to DB9 serial adaptor, antenna, mounting plate, screws & drywall anchors (4).

Specifications

Power Supply	+12V DC, 1A
Wireless Networking	IEEE802.15.4 Zigbee® network compliant
RF Frequency Range	2.4Ghz - 2.5Ghz
Multi-Purpose Output Port (Port 1)	One custom 3.5mm 4-conductor jacks
.....	Designed for RTI modules and industry-standard IR emitters.
IR Output Ports (Ports 2 & 3)	Two, 3.5mm jacks
IR Output Drive	100mA maximum (per port, adjustable)
Infrared Frequency Transmission Range	15kHz - 460kHz
RS-232 Port	One, RJ45 Connection
Ethernet Port	One, 10/100Base-T
Relays	Two, +30VDC, 5A max
Sense Inputs	Two, 3-24VDC
Mounting	Wall-mount or free standing
Dimensions (W x H x D)	7.0" (175mm) x 3.0" (76mm) x 1.0" (25mm)
Warranty	Three Years (Parts & Labor)

RP-4 Control Processor

The RP-4 is designed to provide reliable one-way operation of audio/video and other electronic systems using RTI's family of wireless RF interfaces and the RTIPanel App. This small, cost-effective processor comes with control options including four routable IR ports, voltage sense inputs, programmable relays and support for the RTIPanel App*. The RP-4 is the perfect control system for single room installations such as home theaters, media centers, and bedrooms.

Part #: 10-210520-11



Key Features

- Stores all system commands and macros for reliable control.
- Integrated 433MHz RF receiver.
- Four infrared ports with routing and output adjustment.
- Supports RTIPanel App for one-way control via Apple iOS smartphones and tablets
- Two voltage sense inputs for monitoring equipment status.
- Two programmable relay outputs.
- Works with all RTI 433MHz wireless interfaces.
- RF signal reception LED.
- USB and Ethernet programming.

Installation Notes

- * The RP-4 supports 433MHz enabled wireless interfaces and RTIPanel App running on Apple iOS® devices (Android devices and Virtual Panel NOT supported).
- The RP-4 does not support: RTI wired interfaces (in-wall controllers), RM-433 433MHz RF antennas and ZM-24 Zigbee® transceivers.
- RTIPanel App provides one-way control only - no feedback.
- In the box: RP-4, power supply (12V, 1A), antenna, mounting plate, screws & drywall anchors (4).

Specifications

Power Supply	+12VDC, 1A
RF Receiver Carrier Frequency	433 MHz
Infrared Transmission Bandwidth	15kHz - 460kHz
IR Output Ports	Four (4), 3.5mm jacks
IR Output Drive	100mA maximum (per port, adjustable)
Infrared Frequency Transmission Range	15kHz - 460kHz
Ethernet Port	One, RJ45 Connection, 10/100Base-T
Relays	Two, +30VDC, 5A max
Sense Inputs	Two, 3-24VDC
Mounting	Wall-mount or free standing
Dimensions (W x H x D)	7.0" (175mm) x 3.0" (76mm) x 1.0" (25mm)
.....	(Dimension does not include antenna or connectors)
Weight	6.7 oz. (190g)
Warranty	Three Years (Parts & Labor)

KX3 3.5 inch In-Wall Touchpanel Keypad with Control Processor

The KX3 is a unique, hybrid device that combines the capabilities of an in-wall touchpanel and an advanced control processor.

Detailed Info in the
Touchpanel Section:

[More Info](#)

Part #: 10-210618-19



VXP-82 8x2 All-in-One Control Processor & AV Presentation Switcher

The VXP-82 combines a robust control processor with a built-in Audio/Video presentation switcher to deliver a single-box solution for conference rooms, classrooms, and lecture halls.

Detailed Info in the
Collaboration Section:

[More Info](#)

Part #: 10-210638-21



Control Kits

CCK-32 Custom Control Kit

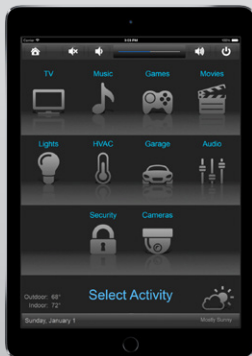
Get started with the RTI Single Room Solution!

The CCK-32 Custom Control Kit delivers powerful control and automation of AV, lighting, climate, security and more. An ideal single room solution for a smart home or office, the CCK-32 scales easily to control the whole home or entire office. It combines the power of the XP-3 control processor with the highly functional touchscreen and vibrant, fully customizable graphical interface of the T2x remote control for exceptional control in multiple environments. The included RTiPanel license enables use of an Apple or Android smartphone or tablet for another convenient control option. With full customization via Integration Designer APEX, the kit enables integrators to deliver intuitive scalable control for the needs of today and the opportunities of tomorrow.

Includes:

- XP-3 Advanced Control Processor
- T2x 2.8" Touch Screen Remote Control
- XP RTiPanel Single User License
- Infrared Emitters (3)

Part #: 10-210828-22



**XP RTiPanel Single License
for Apple iOS and Android Smartphones
and tablets**
(Smartphone or tablet not included)



**T2x
Remote Control**



**XP-3
Control Processor**



3 IR Emitters

Installation Notes

In the box:

- XP-3, power supply (12V, 1A), RJ45 to DB9 serial adaptor, antenna, mounting plate, screws & drywall anchors (4), MAC address card.
- T2x, docking station, power supply (5V, 2A), interchangeable keycap kit (8 keycaps).
- XP RTiPanel single license certificate.
- IR emitters (3).

T4x Remote Control

Introducing the T4x remote control, flagship of the award-winning wireless interface lineup from RTI. Precision engineered with a large high-resolution capacitive touchscreen, the essential hard buttons, and a completely customizable interface, the user will enjoy simple, intuitive control and superb ergonomics. Perfectly suited for the smart home or office, the T4x sets the standard in wireless control with advanced features including grip sensors, WiFi, dual RF, and more.

Part #: 10-210768-25



Key Features

- Dual RF capability uses 433MHz and 2.4GHz (utilizing Zigbee technology).
- Integrated wireless Ethernet for album art, wireless updating and more.
- Flush-mount, 4.0" high-resolution capacitive LCD touchscreen (480 x 800).
- Integrated grip sensors, accelerometer and ambient light sensor.*
- Twenty assignable/programmable keypad buttons.
- Cursor button allows simple scrolling list navigation.

Installation Notes

- RF control requires an RM-433 433MHz antenna, ZM-24 2.4GHz transceiver module and an RTI control processor, or an RTI control processor with an integrated antenna.
- Initial program updates require a USB cable (USB A to Micro B - not included) or a proprietary RTI programming cable which is included with new RTI IRPRO programming kit. Contact your local distributor to purchase this cable if you already own an IRPRO programming kit. Once a WiFi® connection is established, programming may be updated wirelessly over the LAN (See op guide).
- * Grip sensors and accelerometer cannot be used simultaneously.
- In the Box: T4x, docking station, power supply (5V, 2A).

Specifications

Power	3.6 VDC, 1800 mAh Lithium-Ion Battery Pack
Infrared Control Range	30 feet (9.1 meters) @ 60 degrees
Infrared Frequency Transmission Range	15kHz - 460kHz
Radio Frequency Control Range	Up to 100 feet (30.5 meters)
Radio Frequency Carrier	802.15.4 @ 2.4Ghz (Zigbee® technology)
.....	433 MHz
Wireless Ethernet	802.11b/g/n @ 2.4Ghz
Touchscreen Display	4 in (101mm), diagonal, high-brightness, capacitive color LCD
.....	WVGA (480x800 pixels) with 16.7M colors
Battery Charge Time	3-4 Hours
Dimensions (L x W x D)	8.3" (211mm) x 2.3" (58mm) x 0.8" (20mm)
Weight	7.5 oz. (213g) with battery pack
Warranty	Three Years (Parts & Labor) / One Year on the battery

T2x Remote Control

The remarkable T2x is the fifth generation of RTI's renowned T2 remote control platform. The 2.8" color display delivers vivid custom graphics, including two-way feedback with album art, while the perfect selection of soft-touch buttons provide quick access to common tasks. The T2x also features ground breaking innovations such as grip sensors and an accelerometer for instant-on control, an edge-to-edge touchscreen allows improved gesture control, WiFi®, and more!

Part #: 10-210504-13



Key Features

- Dual RF capability uses 433MHz and 2.4GHz (utilizing Zigbee technology).
- Integrated wireless Ethernet for album art, wireless updating and more.
- Two-way control using 2.4GHz (Zigbee), WiFi and RTI control components.
- Flush mounted 2.8" color touchscreen.
- Integrated grip sensors and an accelerometer provide "instant-on" control*.
- Cursor button allows simple scrolling list navigation.

Installation Notes

- RF control requires an RM-433 433MHz antenna, ZM-24 2.4GHz transceiver module and an RTI control processor, or an RTI control processor with an integrated antenna.
- Initial program updates require a USB cable (USB A to Micro B - *not included*) or a proprietary RTI programming cable which is included with new RTI IRPRO programming kit. Contact your local distributor to purchase this cable if you already own an IRPRO programming kit. Once a WiFi® connection is established, programming may be updated wirelessly over the LAN (See op guide).
- *Grip sensors and accelerometer cannot be used simultaneously.
- In the Box: T2x, docking station, power supply (5V, 2A), removable keycap kit (8 keys).

Specifications

Power	3.6 VDC, 1800 mAh Lithium-Ion Battery Pack
Infrared Control Range	30 feet (9.1 meters) @ 60 degrees
Infrared Frequency Transmission Range	15kHz - 460kHz
Radio Frequency Control Range	Up to 100 feet (30.5 meters)
Radio Frequency Carrier	802.15.4 @ 2.4Ghz (Zigbee technology)
.....	433MHz
Wireless Ethernet	802.11b/g @ 2.4Ghz
Touchscreen Display	2.8 in (71mm) diagonal, High-brightness color TFT LCD
.....	1/4 VGA (240x320 pixels) with 64K colors
Battery Charge Time	3-4 Hours
Dimensions (L x W x D)	10.0" (254mm) x 2.3" (58mm) x 0.7" (20mm)
Weight	8.8 oz. (250g) with battery pack
Warranty	Three Years (Parts & Labor) / One Year on the battery

T2i Remote Control

Offering many of the features of a high-end remote control, such as a color touchscreen, dual-RF capability, and accelerometer, the T2i allows users to leverage advanced technologies at a budget-friendly price. In addition, the control interface is customizable for easy, intuitive control, even displaying feedback from supported electronics on it's 2.8" color touchscreen.

Part #: 10-210505-14



Key Features

- Dual RF capability uses 433MHz and 2.4GHz (utilizing Zigbee technology).
- Two-way control using 2.4GHz (Zigbee) and RTI control components.
- Flush mounted 2.8" color LCD touchscreen.
- Accelerometer provides instant-on control.
- Forty-seven assignable/programmable keypad buttons.
- Cursor button allows simple scrolling list navigation.

Installation Notes

- RF control requires an RM-433 433MHz antenna, ZM-24 2.4GHz transceiver module and an RTI control processor, or an RTI control processor with an integrated antenna.
- Program updates require a USB cable (USB A to Micro B - not included) to be connected between the docking station and a PC, or a proprietary RTI programming cable which is included with new RTI IRPRO programming kits. Contact your local distributor to purchase this cable if you already own an IRPRO programming kit.
- In the Box: T2i, Docking station, power supply (5V, 2A), removable keycap kit (8 keys).

Specifications

Power	3.6 VDC, 1800 mAh Lithium-Ion Battery Pack
Infrared Control Range	30 feet (9.1 meters) @ 60 degrees
Infrared Frequency Transmission Range	15kHz - 460kHz
Radio Frequency Control Range	Up to 100 feet (30.5 meters)
Radio Frequency Carrier	802.15.4 @ 2.4GHz (Zigbee technology)
Touchscreen Display	2.8 in (71mm) diagonal, High-brightness color TFT LCD
.....	1/4 VGA (240x320 pixels) with 64K colors
Battery Charge Time	3-4 Hours
Communications	USB 2.0 programming port (proprietary connector)
Dimensions (L x W x D)	10.0" (254mm) x 2.3" (58mm) x 0.7" (20mm)
Weight	8.3 oz. (236g) with battery pack
Warranty	Three Years (Parts & Labor) / One Year on the battery

T1-B+ Remote Control

The T1-B+ allows all other factory remote controls to be combined into one simple, ergonomic user interface providing powerful one-handed system control. Features include dual RF capability, backlit buttons, a rechargeable Lithium-Ion battery and companion remote functionality.

Part #: 10-210503-12



Key Features

- Dual RF transmission capability uses 433MHz and 2.4GHz (utilizing Zigbee technology).
- Comfortable ergonomic design permits effortless, one-handed operation.
- Eight source and four general purpose assignable/programmable keypad buttons with interchangeable key caps (Laser Shark compatible).
- Companion remote capability (Similar to SURFiR).
- Forty assignable/programmable keypad buttons.
- Capable of transmitting IR and RF from a single button press.
- Completely customizable and programmable.
- Optional modules/processors for voltage sensing (to monitor power status of equipment) and RS-232 control.
- System includes a Lithium-Ion Battery and a docking station.
- USB Programming.

Installation Notes

- RF control requires an RM-433 433MHz antenna, ZM-24 2.4GHz transceiver module and an RTI control processor, or an RTI control processor with an integrated antenna.
- In the Box: T1-B+, docking station, power supply (5V, 2A), interchangeable keycap trees (2), wall mount bracket, screws & drywall anchors (2)

Specifications

Power	3.6 VDC, 950 mAh Lithium-Ion Battery Pack
Infrared Control Range	30 feet (9.1 meters) @ 60 degrees
Infrared Frequency Transmission Range	15kHz - 460kHz
Radio Frequency Control Range	Up to 100 feet (30.5 meters)
Radio Frequency Carrier	802.15.4 @ 2.4Ghz (Zigbee technology)
.....	433MHz
Battery Charge Time	3-4 Hours
Communications	USB programming port
Dimensions (L x W x D)	10.0 in (254mm) x 1.9 in (48mm) x .9 in (23mm)
Enclosure	High-impact molded ABS plastic
Weight	7 oz. (200g) with battery pack
Warranty	Three Years (Parts & Labor) / One Year on the battery

U3 Remote Control

The U3 weather-resistant remote is the perfect companion for hot tubs, pools, bathrooms, and decks, delivering reliable wireless control of electronic systems in environments that are too harsh for standard remotes. The durable remote floats if dropped in the water for easy retrieval. It uses inductive charging and wireless programming updates, allowing it to be completely sealed for exceptional weather protection. The U3 combines the convenience and low power requirements of an electronic paper display with fully programmable soft-touch buttons for quick access to commonly used functions. The display is easy to read in bright light - even outdoors - and can be customized to each project via the award-winning RTI Integration Designer programming software.

Part #: 10-210739-23



Key Features

- Durable design is weather resistant.
- Ergonomic design permits effortless, one-handed operation.
- Completely sealed and floats.
- Dust tight and water repellent (IP66 rated).
- Dual RF capability uses 433MHz or 2.4GHz (utilizing Zigbee® technology).
- Sixteen programmable keypad buttons.
- Electronic paper display is easy to read in bright light.
- Wireless programming.
- Inductive wireless charging.
- Rechargeable Lithium-Ion battery.
- Three different screen text size selections.

Installation Notes

- The U3 requires ZB-Pro Zigbee Programming Tool to download system file and firmware updates.
- In the Box: U3, charging dock (not water resistant, indoor use only), cradle, wall mount holster (2), Lithium-Ion battery (installed), international power supply (5V, 1A), size 10 mounting screws.

Specifications

Power	3.6 VDC, 900 mAh Lithium-Ion Battery Pack
Radio Frequency Control Range	Up to 100 feet (30.5 meters)
.....	(with optional System Interfaces/Processors)
Radio Frequency Carrier	802.15.4 @ 2.4Ghz (Zigbee® technology)
.....	433 MHz
Display	Electronic Paper Display
Display Size	1.9" (48mm) diagonal
Battery Life	2-3 Months*
Battery Charge Time	3-4 Hours
Dimensions (L x W x D)	7.9" (201mm) x 2.3" (58mm) x 1.1" (28mm)
IP Rating	IP66: Dust tight and water repellent**
Weight	6.8 oz. (193g) with battery pack
Warranty	Three Years (Parts & Labor) / One Year on the battery

* With average use on full charge, your results may vary.

** Not intended for exposure to water for extended periods of time.

SURFiR® Companion Remote Control

The SURFiR companion remote represents a revolutionary concept in control. The remote allows users to incorporate the Apple® or Android® devices as the main graphical interface for their control system, while adding the convenience of tactile control with hard buttons. The SURFiR actually stays in sync with the RTiPanel app, controlling the same electronics and eliminating the numerous screen swipes needed for control tasks that require frequent interaction.

Part #: 10-210483-19



Key Features

- Provides a companion remote for use with the RTiPanel and Virtual Panel apps.
- Tracks page changes to stay in sync with one or more apps.
- Select between 433MHz (one-way) and 2.4GHz (two-way) operation.
- Remote finder wakes up SURFiR and emits loud beeps (must use Zigbee®).
- Includes eight buttons that can be custom labeled.
- Works with any XP series control processor and KX3 inwall touchpanel*.
- Battery low indicator.
- Uses 4 AAA batteries.

Installation Notes

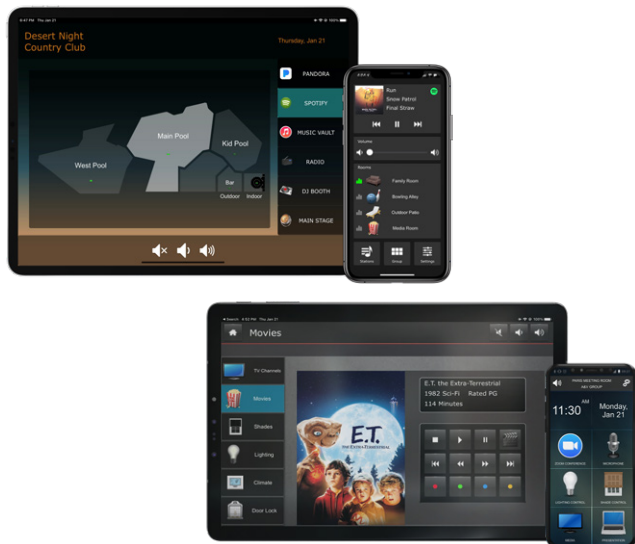
- Does NOT have infrared control capability.
- Requires XP series control processor.
- Requires an RM-433 antenna, ZM-24 2.4GHz transceiver module or an RTI control processor with an integrated antenna.
- *NOTE: When used with an XP-3 control processor, 2.4GHz Zigbee RF must be used. 433MHz RF is NOT supported with XP-3 via the RM-433.
- In the Box: SURFiR, Alkaline batteries (4), front clear window, tri-wing screwdriver, function label sheet, room label sheet

Specifications

Power	4 AAA Alkaline batteries
Radio Frequency Control Range	Up to 100 feet (30.5 meters)
Radio Frequency Carrier	802.15.4 @ 2.4Ghz (Zigbee® technology)
.....	433MHz
Dimensions (L x W x D)	9.5 in (240mm) x 1.8 in (46mm) x .8 in (22mm)
Enclosure	High-impact molded ABS plastic
Weight	8.0 oz. (228g) with batteries
Warranty	Three Years (Parts & Labor)

RTiPanel App

Apple® / Android® Smart Phones and Tablets



Microsoft Windows®



Fully customizable using RTI's Integration Designer® programming software, the RTiPanel offers the same intuitive control experience RTI remote controls offer, running on an Apple or Android smart phone or tablet device as well as on a Microsoft Windows PC. Providing secure local or remote access to an RTI control processor from any Internet connection, the RTiPanel allows for control via LAN, Wi-Fi and WAN control off site. When used with an XP series control processor, users can view and adjust thermostats, monitor security systems and turn off lights, in addition to controlling their A/V electronics, from the office, on vacation, or virtually anywhere in between.

For licensing options and installation information, please visit the dealer section of www.rticorp.com.

XP Processor Licenses for Apple® iOS/Android®/Windows® Devices

**XP RTiPanel Single User
Paper License
Part#: 10-210624-16**

**XP RTiPanel Single User
e-License
Part#: 10-210628-20**

**XP RTiPanel Unlimited User
Paper License
Part#: 10-210625-17**

**XP RTiPanel Unlimited User
e-License
Part#: 10-210629-21**

RP-4 Processor Licenses for Apple® iPad/iPhone/iPod Touch

**RP4 RTiPanel Single User
Paper License
Part#: 10-210539-21**

**RP4 RTiPanel Single User
e-License
Part#: 10-210536-18**

**RP4 RTiPanel 5-User
Paper License
Part#: 10-210546-19**

**RP4 RTiPanel 5-User
e-License
Part#: 10-210538-20**

Key Features

- Control and receive feedback from audio, video, lighting, security, climate, and more!
- RTiPanel app available through Apple App Store®, Google Play® and the Amazon App Store®
- Fully integrate Apple iPad®, iPhone®, iPod Touch®, Android™ devices and Windows® PCs into new or existing RTI control systems utilizing an XP series and RP-4 control processors.
- Completely customizable graphical interface using same Integration Designer software that is used for all RTI products
- Supports creation of both portrait and landscape views with minimal extra programming required.
- RTiPanel supports full two-way feedback, including cover art, graphics, text, dynamic scrolling lists, and more (requires XP processor).
- Supports local connection via LAN or WiFi®, and off-site access via WiFi® or cellular data (if available), with automatic switching.
- Control system programming stored on Apple/Android/Windows devices and updates automatically when changes are made.

System Requirements

General

- RTI XP series control processor (two-way control) or RP4 control processor (one-way control).
- The device running the RTiPanel App and the control processor must be connected to the Ethernet network.
- Remote access requires a connection to the Internet and either a static IP address from the ISP (Internet Service Provider), or a dynamic DNS account implemented.
- Two-way control and off-site access requires an XP series control processor.

Apple iOS Devices

- RTiPanel App compatible with Apple iPad and iPhone.
- Apple devices require iOS 3.2 or higher (* Subject to change without notice.)

Android Devices

- Requires an XP series control processor (not compatible with RP-4).
- RTiPanel App compatible with Android smart phone and tablet devices.
- Android devices with touchscreen displays larger than 5.5" will require a tablet license.
- Android devices require 2.1 or higher (*Subject to change without notice.)

Microsoft Windows PCs

- IBM or compatible personal computer running Microsoft Windows XP, Windows 7, Windows 8 or higher operating system.

NOTE: RTiPanel App will not run on Windows 95/98/ME.

- At least 256 Megabytes (MB) of RAM.
- 16 bit color monitor (16 bit color 1024x768 or better recommended, 256 colors not supported).
- PC and XP series control processor must be connected to the Ethernet network.
- Remote access requires a connection to the Internet and either a static IP address from the ISP (Internet Service Provider), or a dynamic DNS account implemented.
- Remote access requires the Virtual Panel license.

Available for download from



Apple iPad, iPhone, iPod Touch



Android Smart Phone and Tablets



KA11 11 inch Countertop/Wall Touchpanel

The KA11 touch panel is the ultimate choice for simple, intuitive control of the entertainment, environment and security systems in residential or commercial facilities. It features a fully customizable 11.6" widescreen LCD display with 1920x1080 FHD resolution and integrated capacitive touchscreen. The sleek touchpanel is easily wall mounted or an accessory stand is available for table top installations. Built-in gigabit Ethernet with PoE enables powerful two-way control via the RTI control system, video from IP security cameras, video intercom functionality, and remote programming updates.

KA11 Touchpanel Black

Part #: 10-210766-23

KA11 Touchpanel White

Part #: 10-210767-24

KA11 Tabletop Stand

Part #: 10-210784-23

KA8/KA11 Power Supply

Part #: 10-210799-29



Key Features

- 11.6" widescreen LCD with 1920x1080 Full HD resolution and integrated capacitive touchscreen, supporting multi-touch and gesture.
- Fully customizable interface can be programmed in portrait or landscape mode.
- Innovative design allows wall mount in dual gang electrical box or table top installation using stand accessory (sold separately).
- Ambient light and proximity sensor adjusts the screen brightness and LED backlights automatically according to the environmental light level.
- Powered by PoE (Power over Ethernet) or a power supply (sold separately).
- Gigabit Ethernet with PoE enables two-way control via the RTI control system, video from IP security cameras, and remote programming updates.
- Video intercom capability to door station with built in camera, microphone and speakers

Installation Notes

- In the box: KA11, mounting bracket, mounting screws (4), 2-gang low voltage bracket
- The Tabletop Stand is sold separately

Specifications

Power (Power Supply not included)	+24VDC to +47VDC or PoE
Power Management	Adjustable backlight brightness/proximity sensor
Touchscreen Display	11.6 in (294mm) diagonal, High-brightness color LCD
	WXGA (1920x1080 pixels) with 16.7M colors, LED Backlit, Projected Capacitive
Ethernet Port	10/100 Base-T with Power-over-Ethernet
Camera	Color CMOS, 8MP, 30FPS
Microphone	Built-in Microphone
Speakers	wo (2), Stereo 2 Watt
Operating Temperature	+32°F to +122°F (0°C to +50°C)
Operating Humidity	5% to 95% Non-condensing
Mounting	Tabletop w/ Aluminum Stand or
	Wall-Mount w/ 2-gang low voltage bracket
Outer Bezel Dimension (W x H)	12.4in (313mm) x 7.9in (201mm)
Depth in Wall	0.83in (21mm)
Warranty	Three Years (Parts & Labor)

KA8 8 inch Countertop/Wall Touchpanel

The KA8 touch panel provides simple, intuitive control of the entertainment, environment and security systems in residential or commercial facilities. It features a fully customizable 8" widescreen LCD display with 1280x800 WXGA resolution and integrated capacitive touchscreen. The sleek touchpanel is easily wall mounted or an accessory stand is available for table top installations. Built-in gigabit Ethernet with PoE enables powerful two-way control via the RTI control system, video from IP security cameras, and remote programming updates.

KA8 Touchpanel Black

Part #: 10-210764-21

KA8 Touchpanel White

Part #: 10-210765-22

KA8 Tabletop Stand

Part #: 10-210783-22

KA8/KA11 Power Supply

Part #: 10-210799-29



Key Features

- 8" widescreen LCD with 1280x800 WXGA resolution and integrated capacitive touchscreen, supporting multi-touch and gesture.
- Fully customizable interface can be programmed in portrait or landscape mode.
- Innovative design allows wall mount in dual gang electrical box or table top installation using stand accessory (sold separately).
- Ambient light and proximity sensor adjusts the screen brightness and LED backlights automatically according to the environmental light level.
- Powered by PoE (Power over Ethernet) or a power supply (sold separately).
- Gigabit Ethernet with PoE enables two-way control via the RTI control system, video from IP security cameras, and remote programming updates.

Installation Notes

- In the box: KA8, mounting bracket, mounting screws (4), 2-gang low voltage bracket
- The Tabletop Stand is sold separately

Specifications

Power (Power Supply not included)	+24VDC to +47VDC or PoE
Power Management	Adjustable backlight brightness/proximity sensor
Touchscreen Display	8.0 in (203mm) diagonal, High-brightness color LCD
	WXGA (1280x800 pixels) with 16.7M colors, LED Backlit, Projected Capacitive
Ethernet Port	10/100 Base-T with Power-over-Ethernet
Microphone	Built-in Microphone
Speakers	wo (2), Stereo 2 Watt
Operating Temperature	+32°F to +122°F (0°C to +50°C)
Operating Humidity	5% to 95% Non-condensing
Mounting	Tabletop w/ Aluminum Stand or
	Wall-Mount w/ 2-gang low voltage bracket
Outer Bezel Dimensions (WxH)	8.78" (223mm) x 5.83" (148mm)
Depth in Wall	0.83" (21mm)
Warranty	Three Years (Parts & Labor)

CX10 10 inch Countertop/Under Cabinet Touchpanel

From the executive boardroom to the gourmet kitchen, the CX10 delivers intuitive control and a high-end entertainment experience in a sleek touchpanel design. The CX10's 10-inch, high-resolution LCD screen offers ample space to create the ultimate custom user interface. With this level of personalization, any user can confidently manipulate the environment and entertainment. The versatile CX10 also doubles as a display for watching an HD movie or a television show via the integrated HDBaseT video input and stereo speakers. CX10 supports video intercom through the built-in camera, microphone and speaker.

Part #: 10-210612-13



Key Features

- 1280x800 WXGA LCD with integrated multi-touch capacitive touch screen.
- Composite Analog Video and HDBaseT digital video input at up to 1080p.
- Analog audio input and stereo speakers.
- Integrated 10/100 Base-T and 802.11 Wireless Ethernet.
- Built-in high output IR port for direct control.
- Powered using power supply, CB-8 or PoE (Power over Ethernet)
- Optional modules/processors provide additional two-way control.
- Adjustable tilt display (from 10°-90°) and unit can be mounted under a cabinet.
- Camera, microphone and speaker for video intercom support.

Installation Notes

- A12VDC/1A power supply with an RJ45 connector is included for powering the CX10 through the control port.
- Power may also come from a CB-8 Connecting Block or Power over Ethernet via an 802.3af compliant Power-over-Ethernet router/switch (Class #3).
- NOTE: Using a non-compliant PoE device may damage the CX10.
- In the box: CX10, power supply (12V, 1A) with RJ45 connector, ferrite clamp, RTI Logo.

Specifications

Power +12VDC to +16VDC, 2A max
Power Management Adjustable backlight brightness/proximity sensor
Touchscreen Display 10.1 in (256mm) diagonal, High-brightness color TFT LCD
 WXGA (1280x800 pixels) with 65K colors, LED Backlit, Projected Capacitive
Infrared Output 200mA output, Drives up to 1000 ft (300 m) of wire
 Compatible with ECB-5 and industry standard IR connecting blocks
Ethernet Port 10/100 Base-T with Power-over-Ethernet (Class 3)
Wireless Ethernet 802.11b/g/n
Operating Temperature +32°F to +122°F (0°C to +50°C)
Operating Humidity 5% to 95% Non-condensing
Video Input RJ-45 (HDBaseT), RCA Connector (Composite Analog Video)
 NTSC/PAL/SECAM
Audio Input 3.5mm, Stereo
Mounting Countertop or inverted using included under-cabinet mounting bracket
Dimensions (LxWxH) 8.97" (227.8mm) x 9.90" (251.64mm) x 8.24" (209.49mm)
Weight 3.84LBS (1744g)
Warranty Three Years (Parts & Labor)

CX7 7 inch Countertop/Under Cabinet Touchpanel

From the kitchen to the conference room, the versatile CX7 is perfect wherever "always on", intuitive control is required. The 7" multi-touch capacitive LCD has adjustable tilt, allowing the display to be angled straight up, to nearly flat. The CX7 can even be mounted inverted under a cabinet. Additional features include wired and wireless Ethernet for two-way control, digital video (motion JPEG) and web browsing, while analog audio/video inputs and stereo speakers provide convenient viewing of sources such as satellite TV and security cameras.

Part #: 10-210512-12



Key Features

- 800x480 WVGA LCD with integrated multi-touch capacitive touch screen.
- Composite, S-Video or Component video input at up to 480i, 576i, 480p or 576p.
- Analog audio input and stereo speakers.
- Integrated 10/100 Base-T and 802.11 Wireless Ethernet.
- Built-in high output IR port for direct control.
- Powered using power supply, CB-8 or PoE (Power over Ethernet)
- Optional modules/processors provide additional two-way control.
- Adjustable tilt display (from 10°-90°) and unit can be mounted under a cabinet.

Installation Notes

- A12VDC/1A power supply with an RJ45 connector is included for powering the CX7 through the control port.
- Power may also come from a CB-8 Connecting Block or Power over Ethernet via an 802.3af compliant Power-over-Ethernet router/switch (Class #3).
- NOTE: Using a non-compliant PoE device may damage the CX7.
- In the box: CX7, power supply (12V, 1A) with RJ45 connector, ferrite clamp, RTI Logo.

Specifications

Power +9VDC to +16VDC, 1A max
Power Management Adjustable backlight brightness/proximity sensor
Touchscreen Display 7.0 in (177mm) diagonal, High-brightness color TFT LCD
 WVGA (800x480 pixels) with 65K colors, LED Backlit, Projected Capacitive
Infrared Output 200mA output, Drives up to 1000 ft (300 m) of wire
 Compatible with ECB-5 and industry standard IR connecting blocks
Ethernet Port 10/100 Base-T with Power-over-Ethernet (Class 3)
Wireless Ethernet 802.11b/g
Operating Temperature +32°F to +122°F (0°C to +50°C)
Operating Humidity 5% to 95% Non-condensing
Video Input Three, RCA Connectors
 Composite, S-Video or Component Analog Video - NTSC/PAL/SECAM
Audio Input 3.5mm, Stereo
Mounting Countertop or inverted using included under-cabinet mounting bracket
Dimensions (LxWxH) 7.5" (190mm) x 7.3" (185mm) x 6.25" (159mm)
Weight 2.0Lbs (934g)
Warranty Three Years (Parts & Labor)

KX10 10 inch In-Wall Touchpanel

With a commanding presence and sophisticated styling, the KX10 delivers state-of-the-art automation to residential and commercial settings. Combining luxury and convenience, the KX10 is equipped with an HDBaseT video input for viewing high definition video directly on the 10" widescreen display. Ethernet connectivity makes it easy to check security cameras and answer the door via the built-in intercom

KX10 Touchpanel (White Bezel included)

Part #: 10-210605-15

BZB-KX10LA (Light Almond Bezel)

Part #: 10-210611-12

BZB-KX10BL (Black Bezel)

Part #: 10-210609-19

BZB-KX10BA (Brushed Aluminum)

Part #: 10-210610-11

BB-KX10 Backbox

Part #: 10-210613-14



PoE
POWER OVER
ETHERNET

Key Features

- 10" 1280x800 WXGA LCD with integrated capacitive touch screen.
- HDBaseT and Composite inputs for viewing video.
- Integrated 10/100 Base-T and 802.11 Wireless Ethernet.
- Built-in RS-232 port for one-way control without a separate control processor.
- Built-in high output IR for direct control of electronics.
- Powered via a CB-8, a power supply or PoE+ (Power over Ethernet Plus).
- Stylish low-profile faceplate available in multiple colors (ships with white).
- Camera, microphone and speaker for video intercom support.

Installation Notes

- Power supply not included - A separate power supply (PS16 or similar), an RT1 CB-8 connecting block or an 802.3at compliant Power-over-Ethernet Plus switch/injector. NOTE: An 802.3at (PoE+) switch/injector must be used if PoE powered.
- Detailed installation notes and cut-out drawings available at www.rticorp.com/dealer
- In the box: KX10, RJ45 to DB9 serial adapter (1), drywall template, mounting wings (2).

Specifications

Power	+12VDC to +16VDC, 2A max
Power Management	Adjustable backlight brightness/proximity sensor
Touchscreen Display	10.1 in (256mm) diagonal, High-brightness color TFT LCD
.....	WXGA (1280x800 pixels) with 65K colors, LED Backlit, Projected Capacitive
Infrared Output	200mA output, Drives up to 1000 ft (300 m) of wire
Serial Port	RJ45, RS-232 Communication (one-way)
Ethernet Port	10/100 Base-T with Power-over-Ethernet Plus
Wireless Ethernet	802.11b/g/n
Operating Temperature	+32°F to +122°F (0°C to +50°C)
Operating Humidity	5% to 95% Non-condensing
Video Input	RJ45, HDBaseT
.....	BNC Connector, Composite analog video
Mounting	Integrated mounting wings, or screws through front plate
Installation Cut-Out (H x W)	10.204in (259.18mm) x 7.353in (186.77mm)
Outer Bezel Dimension (H x W)	11.238in (285.45mm) x 7.92in (201.17mm)
Total Depth in Wall	1.22in (30.99mm), with video connector 2.0in (52.5mm)
Weight	2lbs 3.7oz (1014g)
Warranty	Three Years (Parts & Labor)

KX7s 7 inch In-Wall Touchpanel

The KX7s delivers essential control of entertainment, environment, security and more in any residential or commercial installation. The wall-mounted touchpanel has a slim profile framing a vivid 7" LCD that can be fully customized, with an integrated multi-touch capacitive touchscreen enabling enhanced page navigation. The KX7s wakes with a user's approach, convenient in dark rooms. Its ambient light sensor adjusts the display brightness to the perfect level based on the ambient light. The built-in RS-232 and infrared communication allow for direct control of electronics without a control processor. The Ethernet connection enables advanced two-way control and monitoring of connected devices, such as for viewing IP security cameras.

KX7s Touchpanel

(White Bezel included)

Part #: 10-210816-19

BZB-KX7LA (Light Almond Bezel)

Part #: 10-210500-09

BZB-KX7BL (Black Bezel)

Part #: 10-210498-25

BZB-KX7BA (Brushed Aluminum)

Part #: 10-210499-26

BB-KX7 Backbox

Part #: 10-210482-18



PoE
POWER OVER
ETHERNET

Key Features

- Crisp 800x480 WVGA LCD with integrated capacitive touch screen.
- Integrated 10/100 Base-T.
- Built-in RS-232 port for one-way control without a separate control processor.
- Built-in high output IR for direct control of devices.
- Powered using power supply, CB-8 connecting block or PoE (Power over Ethernet).
- Stylish low-profile faceplate available in white, black or brushed aluminum (ships with white).

Installation Notes

- Power supply not included - A separate power supply (PS16 or similar), an RT1 CB-8 connecting block or an 802.3af compliant Power-over-Ethernet router/switch (Class #3). NOTE: Using a non-compliant PoE device may damage the KX7s.
- Detailed installation notes and cut-out drawings available at www.rticorp.com/dealer
- In the box: KX7s, white bezel, RJ45 to DB9 serial adapter (1), ferrite clamp (1), drywall cutout template, mounting wings (2).

Specifications

Power	+9VDC to +16VDC, 1A max
Power Management	Adjustable backlight brightness/proximity sensor
Touchscreen Display	7.0 in (177mm) diagonal, High-brightness color TFT LCD
.....	WVGA (800x480 pixels) with 65K colors, LED Backlit, Projected Capacitive
Infrared Output	200mA output, Drives up to 1000 ft (300 m) of wire
.....	Compatible with ECB-5 and industry standard IR connecting blocks
Serial Port	RJ45, RS-232 Communication (one-way)
Ethernet Port	10/100 Base-T with Power-over-Ethernet
Operating Temperature	+32°F to +122°F (0°C to +50°C)
Operating Humidity	5% to 95% Non-condensing
Mounting	Integrated mounting wings, or screws through front plate
Installation Cut-Out (H x W)	5.6 in (143mm) x 7.7 in (195mm)
Outer Bezel Dimension (H x W)	5.9 in (151mm) x 8.5 in (217mm)
Total Depth in Wall	1.4 in (36mm), with video connector 2.1 in (53mm)
Weight	1.4 lbs (634g)
Warranty	Three Years (Parts & Labor)

KX3 3.5 inch In-Wall Touchpanel Keypad

Perfect in classrooms or conference rooms, the KX3 in-wall touchpanel is a unique hybrid device that combines the capabilities of both a touchscreen controller and an advanced control processor in one cost-effective unit. Featuring many of the benefits of an internal processor - such as two-way control and feedback from electronic systems via IP and RS-232 - the versatile unit even has a built-in 2.4GHz ZigBee® antenna for connectivity with RTI wireless remotes. The KX3 also offers both, wired 10/100 Base-T Ethernet and wireless Ethernet for access to network security cameras, programming updates and more. Other advanced capabilities include six voltage sense ports with sense-event capabilities, four relays for control via contact closure, and video intercom support.

KX3 Touchpanel (White Bezel included)

Part #: 10-210547-20

BZB-KX3LA (Light Almond Bezel)

Part #: 10-210559-23

BZB-KX3BL (Black Bezel)

Part #: 10-210557-21

BZB-KX3BA (Brushed Aluminum Bezel)

Part #: 10-210558-22

BB-KX3 Backbox

Part #: 10-210560-15



Key Features

- Use as an all-in-one control solution or as a touchpanel in an RTI control system.
- Internal control processor allows direct control via IR, IP and two RS-232 along with six sense ports and four relays.
- Hardwired Ethernet with PoE and WiFi (802.11b/g/n).
- 3.5" color high resolution (480x800) LCD with integrated touchscreen.
- Built-in 2.4 GHz ZigBee® antenna offers connectivity with RTI wireless remotes.
- Room status LED lights show can change color if a room is occupied.
- Five (5) customizable hard buttons are Laser Shark compatible.
- Built-in camera, microphone and speaker.

Installation Notes

- Power supply not included - A separate power supply (PS16 or similar), an RTI CB-8 connecting block or a network router with Class3 Power over Ethernet (PoE) is required for power.
- Detailed installation notes and cut-out drawings available at www.rticorp.com/dealer
- In the box: KX3, mounting wings (2), RJ45>DB9 Adapter (2), drywall template.

Specifications

Power	+9VDC to +16VDC, 1A max or 802.3af Power-over-Ethernet
Touchscreen Display	3.5 in (89mm) diagonal, high-brightness color TFT LCD
.....	WVGA (480x800 pixels) with 16.7M colors
Infrared Output	One, 200mA output port, Drives up to 1000 ft (300 m) of wire
Ethernet Port	10/100Base-T with Power-over-Ethernet
Serial Port	Two (2) RJ45, RS-232 communication
Ethernet Port	RJ45, 10/100 Base-T with Power-over-Ethernet
Wireless Networking	WiFi 802.11b/g/n & Zigbee® IEEE802.15.4
Relays	Four, 2A/30 VDC
Sense Inputs	Six, 3-24VDC or Contact Closure
Operating Temperature	+32°F to +122°F (0°C to +50°C)
Operating Humidity	5% to 95% Non-condensing
Mounting	Integrated mounting wings, or screws through front plate
Installation Cut-Out (H x W)	5.192" (131.8mm) x 2.942" (74.7mm)
Outer Bezel Dimension (H x W)	5.876" (149.25mm) x 4.352" (110.5mm)
Total Depth in Wall	1.624" (41.2mm)
Weight	8.9oz (252g)
Warranty	Three Years (Parts & Labor)

KX2 2.8 inch In-Wall Touchpanel Keypad

The KX2 in-wall user interface has a clean, sleek design with twelve programmable hard buttons and a 2.8" color touchscreen. The hard buttons and graphic interface are custom programmed using RTI's Integration Designer® software for full control of electronics. A built-in infrared output port allows direct control or get two-way control when used with an RTI XP series control processor. In addition, the unit's integrated 10/100Base-T Ethernet port with Power-over-Ethernet (POE) provides the flexibility to accommodate any installation.

KX2 Touchpanel (White Bezel included)

Part #: 10-210486-22

BZLA-KX2 (Light Almond Bezel)

Part #: 10-210526-17

BZB-KX2 (Black Bezel)

Part #: 10-210524-15

PBZBR-KX2 (Brushed Aluminum Bezel)

Part #: 10-210525-16



Key Features

- Ships with stylish, low-profile white bezel - bezels also available in black, light almond and brushed aluminum.
- Faceplate and buttons are black with a glossy finish.
- Fits in a 4"x4" square electrical junction box.
- Integrated mounting wings for easy installation in retrofit installs.
- Customizable 2.8" display and twelve assignable/programmable hard buttons.
- QVGA resolution (240w x 320h) TFT LCD to display custom graphics.
- Integrated 10/100Base-T Ethernet port with Power-over-Ethernet.
- IR output drives up to 1000 feet of wire.
- Optional modules/processors for control options such as IR, RS-232 and IP, including advanced two-way control.

Installation Notes

- Power supply not included - A separate power supply (PS16 or similar), an RTI CB-8 connecting block or a network router with Class2 Power over Ethernet (PoE) is required for power.
- Laser Shark compatible for custom engraved button keycaps.
- Detailed installation notes and cut-out drawings available at www.rticorp.com/dealer
- In the box: Interchangeable keycap set (12 keys), drywall template, mounting wings (2 sets), screws (4).

Specifications

Power	+9VDC to +16VDC, .5A max or 802.3af Power-over-Ethernet
Touchscreen Display	2.8" (71mm) diagonal, high-brightness color TFT LCD
.....	QVGA (240w x 320h pixels) with 65K colors
Infrared Output	200mA output, Drives up to 1000 ft (300 m) of wire
.....	Compatible with ECB-5 and industry standard IR connecting blocks
Operating Temperature	+32°F to +122°F (0°C to +50°C)
Operating Humidity	5% to 95% Non-condensing
Ethernet Port	10/100Base-T with Power-over-Ethernet
Mounting	Integrated mounting wings, or screws through front plate
Front Plate Dimensions (H x W)	4.4 in (112mm) x 4.6 in (117mm)
Installation Cut-Out (H x W)	3.789 in (96.5mm) x 3.789 in (96.5mm)
Total Depth in Wall	1.2 in (31mm) plus cables
Weight	7.5 oz (212g)
Warranty	Three Years (Parts & Labor)

KX1 1.2" In-Wall Audio Distribution Keypad

The KX1 in-wall keypad is designed for intuitive multi-room audio control via the RTI control system. A 1.2" color OLED display, eleven fully-programmable hard buttons and an open architecture, provide simple control over media streamers, AV receivers and more. When integrated with an RTI XP control processor and supported distributed audio systems, the customizable LED display provides two-way feedback from the selected source while a backlit bar displays the current volume level. Easily blending into any decor, the KX1 is compatible with standard Decora® style wall plates and is available in white and light almond.

Part #:
White: 10-210548-21
Light Almond: 10-210550-14



KX1 shown with Decora® style wall plate (not included).

Key Features

- In-wall keypad with 1.2" color OLED display with two-way feedback.
- Assignable/programmable hard buttons for common functions.
- Available white and light almond faceplate/keycap kits.
- Backlit volume level indicator bar.
- Use any standard Decora® type wall plate.
- IR output for direct control of devices.
- Ethernet port enables communication with RTI control system.
- Ambient light sensor adjusts the backlight brightness automatically.
- Fits in a single gang electrical outlet box.
- Software and firmware updates via USB and Ethernet.
- Optional modules/processors for control options such as IR, RS-232 and IP, including advanced two-way control.

Installation Notes

- Power supply not included - A separate power supply (PS16 or similar) or an RTI CB-8 connecting block is required for power. Directly wiring to an RTI control processor is not recommended.
- In the box: KX1, MAC address card.

Specifications

Power	+9VDC to +16VDC, 350mA max
Power Management	Adjustable backlight brightness, Ambient light sensor
Display	Color OLED with 65K colors
Display Size	1.2" (30.5mm) diagonal, (128w x 96h pixels)
Ethernet Port	10/100 Base-T
Infrared Output	200mA output, Drives up to 1000 ft (300 m) of wire
.....	Compatible with ECB-5 and industry standard IR connecting blocks
Operating Temperature	+32°F to +122°F (0°C to +50°C)
Operating Humidity	5% to 95% Non-condensing
Communications	USB programming port, Ethernet
Mounting	Mounts into single gang electrical outlet box
Dimensions (H x W x D)	4.1 in (104mm) x 1.78 in (45.2mm) x 1.02 in (25.9mm)
Installation Cut-Out (H x W)	2.85 in (72.39mm) x 1.78in (45.2mm)
Total Depth in Wall75 in (19mm) Plus Cables
Weight	4 oz (284 g)
Warranty	Three Years (Parts & Labor)

WK2 Water Resistant In-Wall Keypad

Combining modern styling and custom control, the WK2 features an all-glass exterior construction, integrated solid-state keypad, and bright OLED display for intuitive control and two-way feedback. The water-resistant keypad extends the RTI automation platform to residential and commercial settings such as kitchens, bathrooms, outdoor theaters, health clubs, yachts, and more. Compatible with RTI's full line of XP processors, the WK2 allows users to select and control audio, video, lighting and more.

WK2 Keypad
Part #: 10-210543-16
CB-WK2 Conduit Box
Part #: 10-210544-17



Key Features

- Capacitive touch glass keypad is water resistant.
- OLED display provides intuitive two-way feedback.
- Sleek, low-profile, glass exterior design.
- Integrated 10/100Base-T Ethernet port with Power-over-Ethernet.
- Integrated mounting wings for easy installation in retrofit installs.
- A metal conduit box is available (separately) for new construction.

Installation Notes

- An 802.3af compliant Power-over-Ethernet router/switch (Class #2) must be used to avoid potential performance issues or damage to the unit.
- The WK2 CANNOT be powered from an external power supply, an RTI CB-8 connecting block or an RTI control processor.
- The WK2 must be used with an RTI XP series control processor - It will not function as a standalone controller.
- In the box: WK2 assembly, mounting wings with screws, MAC address card, drywall cutout template.

Specifications

Power	Power over Ethernet (PoE)
.....	802.3af compliant Power-over-Ethernet router/switch (Class #2)
Display	OLED Monochrome Display / 128w x 32h pixels
Ethernet Port	10/100 Base-T with Power-over-Ethernet
Normal Operating Temperature	+32°F to +131°F (0°C to +55°C)
Non-Operating Temperature	0°F to +150°F (-17°C to +65°C)
.....	Avoid prolonged exposure to direct sunlight
Operating Humidity	5% to 95%
.....	Avoid direct exposure to rain or other water sources
.....	Note: A film of water on the keypad will stop touch button functionality
Mounting	Integrated mounting wings, adhesive gasket, sealant
Front Dimensions (H x W)	3.425"(87mm) x 3.425"(87mm)
Installation Cut-Out (H x W)	2.971"(75.46mm) x 2.967" (75.4mm)
Total Depth in Wall	2.36"(59.95mm)
Weight	7.6 oz (216g)
Warranty	Three Years (Parts & Labor)

RKM-1+ In-Wall Audio Distribution Keypad

Perfect for multi-room audio control, the RKM-1+ is designed for ease of use and affordability. It fits into a single gang electrical box and ships with white, black and light almond faceplate and interchangeable buttons, ensuring seamless integration into homes and buildings. When used together with compatible RTI control processors, the RKM-1+ can communicate bidirectionally with many popular multi-zone receivers and distributed audio systems, reflecting current source and volume level on its LED backlit lens.

Part #: 10-210492-19



RKM-1+ shown with Decora® style wall plate (not included).

Key Features

- Provides control and feedback from distributed audio systems (ex. AD-4x/AD-8x) and multi-zone receivers via an RTI XP control processor (XP-3/XP-6s/XP-8v).
- Includes white, black, and light almond faceplate/buttons.
- Use any standard Decora® type wallplate.
- Eight selectable sources.
- Backlit volume level indicator.
- Customizable LED backlit film source indicator.
- Custom laser-etched LED films may be ordered using Laser Shark.
- Open architecture allows control of virtually anything.
- Optional modules/processors for control options such as IR, RS-232 and IP, including advanced two-way control.

Installation Notes

- Power supply not included - A separate power supply (PS16 or similar) or an RTI CB-8 connecting block is required for power. Directly wiring to an RTI control processor Expansion Port is not recommended.
- Laser Shark compatible for custom engraved source selection lens.
- In the box: RKM-1+ (white), additional keypad cover, keypad set, mute & power buttons (1 each - black & light almond), window film (1 clear, 1 transparent purple), label sheet, screws (2).

Specifications

Power	+9VDC to +16VDC, 350mA max
Infrared Output	200mA output, Drives up to 1000 ft (300 m) of wire
.....Compatible with ECB-5 and industry standard IR connecting blocks	Operating Temperature
.....+32°F to +122°F (0°C to +50°C)	Operating Humidity
.....5% to 95% Non-condensing	Total System Memory
64K Bytes Flash (non-volatile) memory	Communications
USB programming port	Mounting
Mounts into single gang electrical outlet box	Dimensions (H x W x D)
4.1 in (104mm) x 1.8 in (46mm) x 1.0 in (25mm)	Installation Cut-Out (H x W)
2.8 in (71mm) x 1.8 in (46mm)	Total Depth in Wall
.75 in (19mm) Plus Cables	Weight
4 oz (284 g)	Warranty
Three Years (Parts & Labor)	

RK1+ 2,4,8 In-Wall Keypad

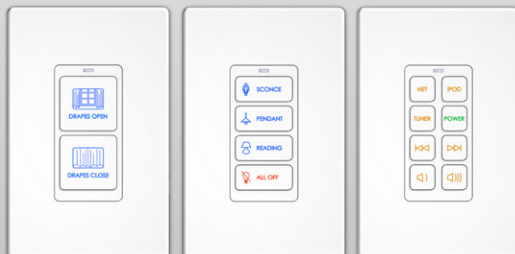
Sized for a single gang electrical box, the RK1+ incorporates two, four or eight fully-programmable buttons. For seamless integration into any decor all RK1+ kits include white, black and light almond faceplates and keycap labels. For a high-end look and even more intuitive control experience, a certificate for one set of Laser Shark custom engraved keycaps is included, which allows text and graphics to be used. Expanded control capabilities, including two-way feedback (via the programmable button backlight color), are available when RTI control processors and accessories are used. The RK1+ even has a built-in IR control system for direct control of electronic systems.

RK1+ Part #

2 Button: 10-210527-18

4 Button: 10-210528-19

8 Button: 10-210529-20



RK1+ shown with custom engraved Laser Shark buttons and Decora style wall plates.

- RK1+ ships with a certificate for one free Laser Shark engraved button set.
- Decora wall plates are *not included* with RK1+.

Key Features

- Two, four or eight assignable/programmable buttons.
- Ships with white, black and light almond faceplate/keycap kits.
- Ships with a certificate for one Laser Shark engraved button set.
- User-definable backlight color.
- Use any standard Decora® type wallplate.
- Two RK1+ keypads may be programmed to work in conjunction.
- IR output port drives up to 1000 feet of wire.
- Fits in a single gang electrical outlet box.
- Optional modules/processors for control options such as IR, RS-232 and IP, including advanced two-way control.

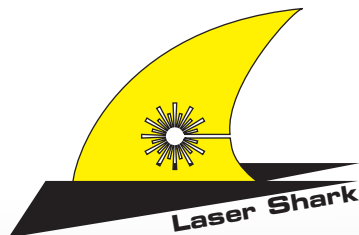
Installation Notes

- Power supply not included - A separate power supply (PS16 or similar) or an RTI CB-8 connecting block is required for power. Directly wiring to an RTI control processor Expansion Port is not recommended.
- In the box: RK1+ (White), additional keypad covers (1 black, 1 light almond), keycap label kits (1 white, 1 black, 1 light almond), certificate for one Laser Shark engraved button set, machine screws (2).

Specifications

Power	+9VDC to +16VDC, 350mA max
Backlights	RGB LED - User-definable color
Infrared Output	200mA output, Drives up to 1000 ft (300 m) of wire
.....Compatible with ECB-5 and industry standard IR connecting blocks	Operating Temperature
.....+32°F to +122°F (0°C to +50°C)	Operating Humidity
.....5% to 95% Non-condensing	Communications
USB programming port	Mounting
Mounts into single gang electrical box	Dimensions (H x W x D)
Purchased (Decora® Type)	Dimensions (H x W x D)
4.1 in (104mm) x 1.8 in (46mm) x 1.7 in (43mm)	Installation Cut-Out (H x W x D)
2.8 in (71mm) x 1.8 in (46mm) x 1.37 in (35mm)	Total Depth in Wall
1.7 in (43mm) Plus Cables	Weight
4 oz (284 g)	Warranty
Three Years (Parts & Labor)	

Laser Shark



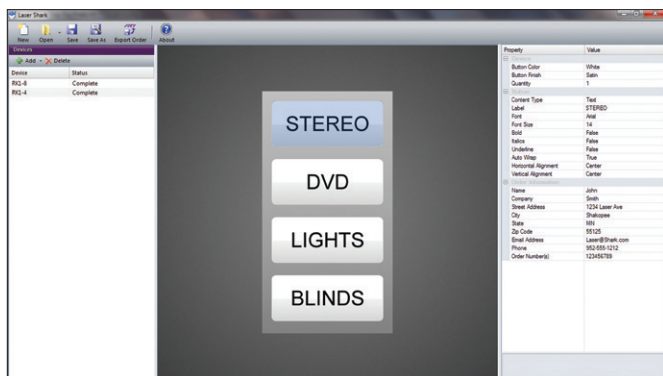
RTI is pleased to offer dealers the ability to create their own custom button labels for compatible RTI products. The powerful yet simple to use Laser Shark® software allows you to use almost any font or graphic, to insure intuitive control for the end-user.

Part #: 10-210478-23

Key Features

- Allows easy customization of button keycap labels on certain RTI products.
- Select from almost any font type, language, symbol or graphic image.
- Compatible with RKM-1+, RK1/RK1+, KX2, RK3-V, T1-B/T1-B+, T2i, T2x, T3x.
- Ordering via the Internet.
- Software is free of charge and available to RTI dealers only.

Laser Shark Software



Laser Shark Software available on the dealer section of the RTI website - rticorp.com

Buttons Available for Engraving



RKM-1+ interchangeable source indicator lens.



RK1+
2/4/8



KX2
• All twelve hard button keycaps.



KX3
• Five hard button keycaps.



T1-B/T1-B+
• Eight "source" button keycaps located at the top of the T1-B.
• Four "general purpose" button keycaps below the power button.



T2i/T2x/T3x/T3x White
• Four "general purpose" button keycaps below the touch screen.

CM-232 RS-232 Communication Module

The CM-232 communication module provides an RS-232 interface to almost any RS-232 enabled device. It attaches to supported RTI control processors on one end, and a device's DB-9 serial port connector on the other end. The CM-232 is capable of one-way transmission (no receive function is supported) of user-defined character or binary strings.

Part#: 20-210017-13



Key Features

- Connects to the MPIO ports of RTI control processors (ex. XP-6s, XP-8v etc) and expansion modules (ex. PCM-4).
- Offers one-way RS-232 communication with nearly any RS-232 enabled device.
- Software-selectable baud rate up to 115.2K (depending on control system).
- Industry-standard DB-9 male connector.
- No power supply required - Power is supplied by the output ports.
- User-definable output strings using Integration Designer® software.

Specifications

Baud Rate.....	Software Selectable
	(Depends on attached control system)
Cable Length	12 Feet (3.7 m)
Connector	DB-9 Male
Pins Used	GND, TXD, DTR (tied high)
Dimensions (W x H x D)	1.3" (33mm) x .5" (14mm) x 2" (51mm)
Warranty	Three Years (Parts & Labor)

CPB-1 Control Port Connecting Block

The CPB-1 Control Port Connecting Block provides a cost effective solution for installations such as classrooms or boardrooms that require a wired user interface and both infrared and RS-232 control of local devices. The CPB-1 provides power to one RTI wired user interface and has two output ports that allow the connection of up to two single or dual infrared emitters. It also incorporates an RS-232 port for control of devices without the need of an RTI processor.

Part #: 10-210195-19



Key Features

- Provides power for one compatible RTI wired user interface.
- RJ45 - DB9 adapter included.
- Two infrared emitter outputs.
- Variable IR output power.
- Allows RTI wired user interfaces to communicate via one-way RS-232 to devices without a processor.
- 12VDC power supply included.

Installation Notes

- In the box: CPB-1, power supply (12V, 1A), RJ45 to DB9 serial adapter.

Specifications

Power Supply	+12VDC, 1A
Number of IR Output Ports	Two
Output Ports	3.5mm jacks
	Works with industry-standard IR emitters.
IR Output Drive	100mA maximum (per port, adjustable)
Infrared Input	Compatible with industry-standard repeaters and receivers
RS-232 Port.....	RJ45 Connection
	Includes RJ45 to DB9 adapter
Mounting	Wall-mount or free standing
Dimensions (W x H x D)	4.0" (102mm) x 3.5" (89mm) x 1.1" (28mm)
Weight	8.4 oz. (238g)
Warranty	Three Years (Parts & Labor)

ESC-2+ Ethernet to Serial Converter

The ESC-2+ Ethernet to Serial Converter provides a convenient way to add two RS-232 ports to an RTI XP series control processor. Wire the ESC-2+ to the local Ethernet network with standard cat-5 cable and it will offer full two-way control, as if the device was wired directly to the control processor. Two RJ45 jacks provide efficient cat-5 cabling between the ESC-2+ and the device being controlled.

Part #: 10-210554-18



Key Features

- Provides two additional serial ports to an RTI control processor.
- Use multiple ESC-2+ modules for virtually unlimited control of serial devices.
- Integrates seamlessly into Integration Designer.
- Can be discovered and configured by Integration Designer over Ethernet.
- Easy wiring to devices using cat-5 cable - Includes two RJ45 to serial adapters.
- A reset button allows the unit to be set back to default settings.

Installation Notes

- In the box: ESC-2+, power supply (5V, 2A), RJ45 to DB9 serial adapters (2), screws & drywall anchors (2).

Specifications

Power Supply	+5VDC, 1A
Serial (RS-232) Ports	Two, RJ45
	Includes two RJ45 to DB9 adapters
Ethernet Port	One, RJ45, 10/100 Base-T
Enclosure.....	ABS plastic
Mounting	Wall-mount or free standing
Dimensions (W x H x D)	With Tabs 2.8" (71mm) x 1.8" (45mm) x 1.0" (25mm)
Weight	1.7 oz. (50g)
Warranty	Three Years (Parts & Labor)

PCM-4 Ethernet Port Control Module

With four multi-purpose I/O ports and a voltage trigger output (12VDC), the PCM-4 expands the output capabilities of an RTI XP series control processor to accommodate larger projects. Built-in Ethernet (with PoE) allows for convenient control over the local area network (LAN). Each MPIO port provides IR routing capabilities, one-way RS-232 communication* and power sensing.*

* With RTI accessory devices.

Part#: 10-210493-20



Key Features

- Four multi-purpose I/O ports made available to an RTI XP series control processor.
- Use multiple PCM-4 modules for virtually unlimited control of devices.
- Communication with XP processor over Ethernet network (LAN).
- Powered using power supply or class2 PoE (Power over Ethernet).
- Variable IR output power.
- 12VDC voltage trigger output.

Installation Notes

- In the box: PCM-4, power supply (12V, 1A), USB cable (USB-A to micro-B).

Specifications

Power Supply	Four custom 3.5mm 4-conductor jacks	+12VDC, 1A
Multi-Purpose Output Ports	Designed for RTI modules as well as industry-standard IR emitters	
IR Output Drive	100mA maximum (per port, adjustable)	
Infrared Frequency Transmission Range	15kHz - 460kHz	
Infrared Input	Compatible with industry-standard repeaters and receivers	
Ethernet Port	One, RJ45, 10/100 Base-T with Power-over-Ethernet	
Trigger Output	One, 12 VDC, 100mA max	
USB Port	One, Programming	
Enclosure	Formed steel, black powder coating	
Mounting	Wall-mount or free standing	
Dimensions (W x H x D)	6.8in (173mm) x 2.9in (74mm) x 1.2in (31mm)	
Weight	14.3oz (406g)	
Warranty	Three Years (Parts & Labor)	

RCM-4 Ethernet Relay Control Module

The RCM-4 is equipped with four individually addressable relays. Built-in Ethernet enables the convenience of control from an RTI XP series control processor via the LAN. An IR input allows the RCM-4 to be triggered from many different sources, including RTI wired user interfaces, control processors or third-party infrared repeater systems. Commands trigger open and close functions as well as adjustable hold times for momentary relay operation. The RCM-4 can be powered from the included power supply or PoE.

Part#: 10-210480-16



Key Features

- Four individually addressable relays.
- Relays capable of switching up to 28VDC@5A.
- Relays can be used in a normally open or normally closed configuration.
- Relays can be controlled with both IR and Ethernet.
- Powered using power supply or class2 PoE (Power over Ethernet).

Installation Notes

- In the box: RCM-4, power supply (12V, 1A), terminal connectors (4), USB cable (USB-A to micro-B).

Specifications

Power Supply	Four custom 3.5mm 4-conductor jacks	+12VDC, 1A
Infrared Input	Compatible with industry-standard repeaters and receivers	
Relays	Four, capable of switching up to 28VDC@5A	
Ethernet Port	One, RJ45, 10/100 Base-T with Power-over-Ethernet	
USB Port	One, Programming	
Mounting	Wall-mount or free standing	
Dimensions (W x H x D)	6.8in(173mm) x 2.9in(74mm) x 1.2in(31mm)	
Weight	1.0 lb. (466g)	
Warranty	Three Years (Parts & Labor)	

VPS-1 Voltage Sensor Module

The VPS-1 Voltage Power Sensor monitors the on and off status of almost any electronic component and provides this power status information to RTI control systems such as the XP-6s control processor. When the attached component is powered on, the VPS-1 detects the voltage supplied from the component, an attached power supply, or a third-party power sensor, and sends a signal to the RTI control system.

Part #: 20-210015-11



Key Features

- Connects to the MPIO ports of RTI control processors (ex. XP-6s, XP-8v etc) and expansion modules (ex. PCM-4).
- Detects the on/off status of almost any component.
- No power supply required - Power is supplied by the output ports.
- Power sensing circuit is housed in a compact, rugged ABS enclosure.
- LED light indicates the current power status.
- Control cable can be extended up to 500 feet.

Specifications

Output	Compatible with industry standard IR emitters	
IR Output Drive	100mA maximum	
Input Requirements	3V to 24VDC -or- 9V to 30V P-P AC (50Hz min)	
Maximum Current Consumption	0.5mA	
Control Cable Length	12 feet (3.7 m)	
Voltage Sensor Cable Length	3 feet (.9 m)	
Dimensions (W x H x D)	1.75" (44mm) x 3.0" (76mm) x 0.7" (18mm)	
Warranty	Three Years (Parts & Labor)	

ECB-5 IR Connecting Block

The ECB-5 IR Emitter Connecting Block provides expanded infrared signal distribution when used with RTI control processors, wired user interfaces, third party infrared repeater systems, etc. It has one infrared signal input and five emitter output ports that allow the connection of up to five single or dual infrared emitters.

Part #: 10-210076-17



Key Features

- Five infrared emitter outputs.
- Incorporates a sense input for monitoring the power status of a switched outlet, current sensor, light sensor, etc.
- Variable IR output power.
- Steel construction.
- No power supply required for operation.

Specifications

Power Supply (not included).....	+9VDC to +16VDC, 1.5A
Number of Output Ports.....	Five
Output Ports	3.5mm jacks
.....	Works with industry-standard IR emitters.
IR Output Drive.....	100mA maximum (per port, adjustable)
Infrared Input	Compatible with industry-standard repeaters and receivers
Mounting	Wall-mount or free standing
Dimensions (W x H x D).....	2.6" (66mm) x 2.4" (61mm) x .9" (23mm)
Weight	4 oz. (108g)
Warranty	Three Years (Parts & Labor)

IPE-4 IR Port Expander

The IPE-4 IR Port Expander provides convenient infrared signal expansion when used with RTI control processors. It has one 3.5mm infrared signal input jack and four IR emitter output ports that allow the connection of up to four single or dual infrared emitters. No additional power supply is required.

Part #: 10-210479-24



Key Features

- Allows easy expansion of up to four emitters to a control processor IR port.
- Compatible with most industry standard single or dual IR emitters.
- Sturdy steel construction.
- A power supply is not required for the IPE-4 to function.
- A 3'(1m) mono cable with 3.5mm mini-plugs is included for easy connection to RTI processors.

Installation Notes

- In the box: IPE-4, mini jack cable (3ft), screws & drywall anchors (4).

Specifications

Number of Output Ports.....	Four
Output Ports	3.5mm jacks
.....	Works with industry-standard IR emitters.
IR Output Drive.....	100mA maximum (per port)
Infrared Input	3.5mm jack
.....	Compatible with RTI processors, industry-standard repeaters and receivers
Mounting	Wall-mount or free standing
Dimensions (W x H x D).....	With tabs 5.1"(130mm) x 1.9"(48mm) x .9"(23mm)
Weight	6.8 oz. (192g)
Warranty	Three Years (Parts & Labor)

vIRsa Mouse IR Emitter

Designed with the professional integrator in mind, the "versatile" vIRsa Mouse is an IR emitter built to outperform all others. It is loaded with features to make installations go smoother, such as an unobtrusive, low-profile design, a flexible film adhesive and a separate holder that allows easy removal/replacement of the emitter. Since reliability is of utmost importance, the vIRsa Mouse is engineered with an actual (translucent) PCB to improve the integrity of electrical connections, a built-in resistor protects against over-driving and precision molding ensures consistent quality.

vIRsa Mouse IR Emitter (1pc)
Part #: 10-210268-20



Key Features

- Sleek, low-profile and symmetrical design.
- Separate holder allows for easy removal and replacement of emitter.
- Includes two emitter holders (one red, one clear).
- Blue LED flasher can be visible or covered.
- Ten foot cable reaches the entire rack - includes cable management strap.
- Flexible film adhesive conforms to curved surfaces.
- Translucent circuit board.
- Industry standard 3.5mm mini-plug uses precision over-molding.

Installation Notes

- In the box: vIRsa Mouse, tie wrap, clear holder, dark red holder.

Specifications

Output.....	Compatible with industry standard IR repeater systems
Infrared Power Requirements.....	12VDC, 100mA maximum
Maximum Current Consumption.....	30mA
Cable Length	10 feet (3.0 m)
Plug type.....	3.5mm
Dimensions (W x H x D).....	.4" (10mm) x .5" (13mm) x 0.1" (2.5mm)
Warranty	90 days

ZM-24 2.4GHz Zigbee® Transceiver Module

The ZM-24 2.4GHz Transceiver Module is capable of more than just receiving signals - it can transmit signals as well. This creates a bi-directional communication link between certain RTI control processors and wireless interfaces. The ZM-24 is easy to install, since only one module needs to be hard-wired to the control processor, while additional "repeater" modules can be added by powering them from any electrical outlet within communication range of other modules.

Part #: 10-210178-20



Key Features

- Enables bi-directional wireless communication.
- Wireless communication range between ZM-24 modules up to 100 feet.
- Connects to a central processor from up to 1000 feet away using standard Cat-5 cable.
- Can be used in "coordinator" mode, or create a Zigbee network by adding modules configured in "repeater" mode.
- Utilizes IEEE802.15.4 wireless Zigbee® communication at 2.4Ghz.
- Easy mounting with adjustable antenna and detachable wall bracket.
- Receives power from an RTI control processor or the included power supply.

Installation Notes

- A 2.4 GHz Zigbee® enabled remote control and processor must be used with this model transceiver. It is not compatible with the 433MHz wireless interfaces.
- In the box: Power supply (12V, 1A), Installation bracket, drywall screws/anchors (2), antenna, CAT5e RJ45 cable (6ft).

Specifications

Power	+9VDC to +16VDC, 60mA
RTI Com Port.....	Two-way Zigbee® Communication Port, RJ45 Connection
	Drives up to 1000 ft (300 m) of wire
Wireless Networking.....	IEEE802.15.4 Zigbee® network compliant
RF Frequency Range	2.4Ghz - 2.5Ghz
Operating Temperature.....	+32°F to +122°F (0°C to +50°C)
Operating Humidity.....	5% to 95% Non-condensing
Communications.....	OTA (Over-the-air) Programmable
Enclosure.....	High-impact molded ABS plastic, black
Mounting.....	Detachable bracket
Dimensions -Ant. Flat (WxHxD).....	3.5" (89mm) x 4.0" (101mm) x 1.1" (28mm)
Dimensions -Ant. Ext. (WxHxD).....	3.5" (89mm) x 7.25" (184mm) x 1.1" (28mm)
Weight	4 oz (113g)
Warranty.....	Three Years (Parts & Labor)

ZW-9 Z-Wave® Interface Module

The ZW-9 utilizes Z-Wave wireless communication to control and monitor Z-Wave enabled products such as lights, door locks, shades, thermostats and more via an RTI control system. The built-in antenna and Ethernet port with PoE enable easy installation in new or retrofit installations.

Part #:

US Model: 10-210551-15

EU Model: 10-210552-16

AU Model: 10-210553-17



Key Features

- Wireless control and monitoring of Z-Wave devices via the RTI control system.
- Certified as a Z-Wave Plus product.
- Compatible with a broad range of Z-Wave certified electronics
- Expandable and scalable system allows control of more than 200 devices.
- Programmed using RTI Integration Designer software.
- Powered via PoE (Power over Ethernet) or included power supply.

Installation Notes

- For complete instructions on Z-Wave network setup and device programming using the RTI Integration Designer programming software, visit the ZW-9 product support webpage located on the RTI dealer website.
- In the box: ZW-9, power supply (5V, 2A), mounting plate, screws & drywall anchors (2).

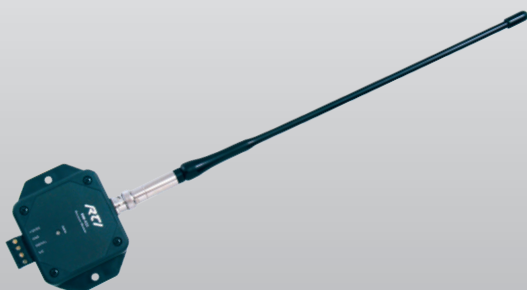
Specifications

Power Supply	+5VDC, 2A
RTI Communication.....	RJ45, Ethernet
Wireless Networking.....	Z-Wave Plus Network Compliant
RF Frequency Range	908.4MHz (US Region)
	Varies by region
Operating Temperature.....	+32°F to +122°F (0°C to +50°C)
Operating Humidity.....	5% to 95% Non-condensing
Enclosure.....	High-impact molded ABS plastic, black
Mounting.....	Detachable bracket
Dimensions (W x H x D).....	5.167" (131mm) x 4.0" (102mm) x 1.12" (28mm)
Weight	4.1 oz. (116g)
Warranty.....	Three Years (Parts & Labor)

RM-433 RF Receiver Module

The RM-433 is a radio frequency receiving device for communicating to RTI control systems and operates at 433MHz. The RM-433 contains a microprocessor that monitors all received signals so that RF noise is filtered out. When valid RF data from an RTI remote is detected, the RM-433 passes the signal through its output driver which allows the data to travel long distances over wire. The output driver is compatible with industry standard infrared repeating systems, and can be wired together with those systems or with additional RM-433 units.

Part #: 10-210039-16



Key Features

- Reliable RF reception due to matched antenna, connector, and PCB.
- Modular design that allows multiple RM-433 units to be wired together allowing for nearly any desired coverage area.
- Output signal is compatible with industry standard infrared repeating systems. This allows multiple IR and/or RF receivers to be wired together into an RTI control system.
- No dedicated power supply required. Power is derived directly from the RTI control system.
- A feedback LED confirms operation.

Installation Notes

- A 433 MHz enabled RTI remote and control processor must be used with the RM433.
- In the box: RM-433, antenna, 3-conductor wire

Specifications

Power Requirements	+9VDC to +16VDC @ 60mA
RF Carrier Frequency	433.92 MHz
Output Drive	200mA maximum
Operating Temperature	+32°F to +122°F (0°C to +50°C)
Operating Humidity	5% to 95% non-condensing
Module Dimensions (HxWxD)	3.5in (89mm) x 3.4in (86mm) x 1.0in (25mm)
Antenna Length	13 in" (330mm)
Weight	4.4 oz. (125 grams)
Warranty	Three Years (Parts & Labor)

Control Accessories - Power Supplies

CB-8 Connecting Block

The CB-8 is an installation accessory designed to provide convenient and reliable power for up to eight (see installation notes) RTI wired user interfaces. In addition to providing power, the CB-8 combines and routes the infrared outputs from the system controllers to a single output, for connection to an RTI control processor.

Part #: 10-210205-11



Key Features

- Includes 16VDC, 4.3 Amp power supply capable of powering up to eight RTI wired user interfaces.*
- Multiple CB-8 units can be daisy-chained.
- Standard RJ45 ports for easy connection of touchpanels.

Installation Notes

- Each CB-8 provides power to the following devices up to the distances listed using IR or Ethernet for control (if available). For control via RS485, the total wired distance for all attached devices should be kept under 1000 ft (300m).
 - KX10 - 2 maximum - Up to 60 feet away.
 - KX7, K4 - 4 maximum - Up to 150 feet away.
 - RK3, RK3-V - 8 maximum - Up to 500 feet away.
 - KX2, RK-2, RK-1+, RKM-1+ - 8 maximum - Up to 1000 feet away.
 - Expansion Modules (PCM-8) - 8 maximum - Up to 1000 feet total wired distance to all modules.
- Not compatible with the RK10.
- In the box: CB-8, power supply (16V, 4.3A).

Specifications

Power	+16VDC, 4.3A
Maximum Current per Port	1.5A
Enclosure	Formed steel, black powder coating
Dimensions (H x W)	5.5 in (127mm) x 9.4 in (239mm)
Mounting	Wall-mount or free standing
Weight	12.6oz (359g)
Warranty	Three Years (Parts & Labor)

PS16-1 16VDC Power Supply

The PS16-1 is used to power a single wired user interface, when a CB-8 Touchpanel Connecting Block is not used.

Part #: 40-210285-22



NOTE: Actual design/specs may vary.

Key Features

- The PS16-1 is used to power a single wired user interface, when a CB-8 Touchpanel Connecting Block is not used.

Specifications

Power Supplied	+16 VDC, 1.6A, 25W
Dimensions (L x W x H)	3.7 in (94mm) x 2.2 in (56) x 1.3 in (34mm)
Weight	10.0oz (290g)
Warranty	Three Years

IR-PRO IR Capture System

The IR-PRO is an infrared code capture system that is specifically designed for system integration professionals. Unlike the capture hardware available in universal "learning" remote controls, the IR-PRO incorporates a much more robust and sophisticated circuit design. This, combined with RTI's proprietary software algorithms, allows the IR-PRO to reliably capture almost any infrared code regardless of code format, frequency, output strength etc.

Part#: 10-210043-11



Key Features

- Advanced infrared detection circuit ensures accurate code capture.
- Compatible with virtually all brands of A/V equipment and remote controls.
- EMI noise suppression for glitch-free acquisition.
- USB port for programming and power.
- Available only to professional system integrators.
- Includes two (2) USB programming cables, a proprietary programming cable for T2i/T2x/T3x, and a durable plastic carrying case.
- Two year parts and labor warranty.

Installation Notes

- In the box: IR-PRO, USB cable (male A to male B), USB cable (male A to mini B), USB cable (USB-A to micro-B), X version remote programming cable, Velcro straps (3), carrying/storage case.

Specifications

Power Requirements.....	Powered directly from USB port
IR Carrier Frequency Range	Up to 460 kHz
Operating Temperature.....	+32°F to +122°F (0°C to +50°C)
Operating Humidity.....	5% to 95% non-condensing
Dimensions.....	4.5in(114mm) x 2.8in(71mm) x 1.3in(33mm)
Weight	6.0 oz. (170 grams)
Warranty.....	Three Years (Parts & Labor)

ZB-Pro 2.4GHz Network Management Tool

The ZB-Pro is for use with Remote Technologies Inc. 2.4 GHz Zigbee® networks. The ZB-Pro is attached to a standard USB port of a PC and is used for downloading the program configuration and firmware updates into RTI ZM-24 Transceiver Modules and the U3 remote control.

Part #: 10-210216-13



Key Features

- Downloads network configuration data into an RTI ZM-24 Transceiver Module and the U3 remote control.
- Updates the firmware in the RTI ZM-24 Transceiver Module.
- Power is derived directly from the USB port.
- Feedback LEDs confirm various operations.
- Available only to professional systems integrators.

Installation Notes

- In the box: ZB-PRO, USB extension cable.

Specifications

Power Requirements.....	Powered directly from USB port
RF Carrier Frequency	2.4GHz (Zigbee® technology)
Standards.....	IEEE 802.15.4
Operating Temperature.....	+32°F to +122°F (0°C to +50°C)
Operating Humidity.....	5% to 95% non-condensing
Dimensions (HxWxD)	4.28in (109mm) x 1.37in (35mm) x .65in (17mm)
Weight	1.1 oz. (32 grams)
Warranty.....	Three Years (Parts & Labor)

ZW-PRO Z-Wave Network Management Tool

The ZW-PRO is a Professional Network Management Tool for use with Z-Wave wireless networks. Attached to a standard USB port of a laptop computer, the ZW-PRO wirelessly communicates with Z-Wave enabled devices during the network "inclusion" setup process. Used in conjunction with the Z-Wave Manager configuration software, the ZW-PRO simplifies the Z-Wave network setup, by allowing the installer to roam the installation with a laptop as they move between device locations.

Part #: 10-210606-16



Key Features

- Enables "inclusion" of devices onto Z-Wave wireless network.
- Plugs into a laptop USB port allowing the installer to roam to each device during Z-Wave network setup process.
- Designed to aid Z-Wave network setup for devices such as door locks and security devices with a short wireless range before "inclusion".
- No external power supply is required. Power is derived directly from the USB port.
- Compact, rugged design.
- Available only to professional systems integrators.

Installation Notes

- For complete instructions on Z-Wave network setup and device programming using the RTI Integration Designer programming software, visit the ZW-9 and ZW-PRO product support webpage located on the RTI dealer website.
- The ZW-PRO does not utilize the button on the unit. All configuration operations are performed via the Z-Wave configuration software.
- In the box: ZW-PRO.

Specifications

Power Requirements.....	Powered directly from a PC USB port
Wireless Networking.....	Z-Wave Plus Network Compliant
RF Frequency Range	908.4MHz (US Region)
.....	Varies by region
Operating Temperature.....	+32°F to +122°F (0°C to +50°C)
Operating Humidity.....	5% to 95% non-condensing
Dimensions (LxWxD).....	3.46in (88mm) x 1.1in (28mm) x .39in (10mm)
Weight5 oz. (14 grams)
Warranty.....	Three Years (Parts & Labor)

Programming Cable (For T2i, T2x, T3x, T4x)

Cable used for downloading programming into the T2i, T2x, T3x and T4x remote controls.

Part #: 40-210767-27



Key Features

- Cable used for downloading programming into the T2i, T2x and T3x remote controls.

Specifications

Connections.....	USB, PC USB Port
.....	10Pin Connector, Remote Control Charging Dock Port
Dimensions (L)	6.56 ft (2m)

AD-4x Audio Distribution System

The AD-4x is perfect for residential or commercial installations that require music everywhere - without breaking the budget. This compact audio distribution system contains both a matrix switching pre-amp and a built-in power amplifier. The four local source inputs can be augmented with four remote source inputs, making it easy to listen to music from your bedroom CD player, iPod dock, or PC. A single Cat-5 cable connects the remote source's audio and infrared signals between the remote location and the AD-4x.

The second generation of the AD-4 audio distribution system, the AD-4x has added powerful new features, providing more flexibility and quicker installations. Now with pre-outs for each zone, a separate amplifier may be added for additional power and speakers where needed. The addition of Ethernet support allows two-way control via the LAN, while a web interface allows the AD-4x output zones to be tested during installation via a web browser on a smartphone, tablet or PC. This web interface is also used to configure output zones into groups, allowing them to be controlled as a single zone.

Designed to be a seamless extension of an RTI control system, the AD-4x provides the audio switching, amplification and distribution functions, while RTI central processors and user interfaces manage the audio source control, user input and status feedback. Information such as the selected source, volume level, and tone control settings are available for each zone.

Part #: 10-210497-24



Key Features

- Four analog stereo audio output zones with 25 watts per channel and pre-outs.
- Four analog audio source inputs with independent trim level adjustment.
- Independent volume and tone control for all audio zones.
- Ethernet support and a web interface allows the AD-4x output zones to be tested during installation via a web browser on a smartphone, tablet or PC.
- Web interface allows output zones to be configured into groups.
- Accessory wall plate (RSP-1) allows source equipment to be connected remotely with a Cat-5 cable.
- Controlled via IR, or two-way control via RS-232 and IP using RTI control systems.
- Optional phone and doorbell mute function using accessory wall plate (PDM-1).
- Compact, low-profile IU design.

Installation Notes

- In the box: AD-4x, AC cable, rack ears (2) with screws, speaker terminal blocks (4), feet (4) with screws.

Specifications

Power	115VAC or 240VAC (Switchable), 120W
Mounting.....	Rack mount or free standing
Dimensions (HxWxD)	2.1in(53mm) x 19in(482mm) x 13.3in(340mm)
Weight	11.8 lbs (5.4kg)
Local Input Source.....	Four, RCA jacks
Remote Input mixed Source	Four, RJ45 jacks
Remote Source IR Input	One, 3.5mm jack x 4, for IR input
Control Ports.....	One, IR 3.5mm jack, One RS-232, DB9 Bidirectional
Ethernet Port	One, RJ45 Bidirectional control
Trigger Output (Status)	One, 12VDC@15mA
Mute.....	3.5mm jack
Output Zones.....	Four, two channels each, phoenix connector
Pre-amp Output (fixed or variable)	Four, two channels each, RCA jacks
Rated Power/Channel ...	>25 Watts, 20Hz to 20KHz (RMS, 2 channels driven into 8 ohms)
Total Harmonic Distortion @20W/8 ohm	0.1%
S/N @ Rated power, IEC A-wtd, Source input shorted	82dB (mute +1)
Frequency Response 20Hz to 20KHz @1W/8 ohms	+0.8db / -0.4dB
Channel separation @1KHz	75dB
Bass Control @100Hz / Treble Control @10KHz.....	10dB +/-0.5dB / 10dB +/-0.5dB
Warranty	Three Years (Parts & Labor)

AD-8x Audio Distribution System

Perfect in larger residential and commercial installations where flexibility is important, the AD-8x Audio Distribution System combines a 16 channel audio amplifier with a matrix-switching pre-amplifier. This provides the ability to listen to eight different audio sources in any zone. In addition, up to four of the audio sources can come from other rooms, allowing sources like an iPod or PC to be accessed from other locations, away from the rack. Meanwhile, the integrated Cool Power® amplifier provides 25 watts per channel of crystal clear sound.

The second generation of the AD-8 audio distribution system, the AD-8x has added powerful new features. The addition of Ethernet support allows two-way control via the LAN, while a web interface allows the AD-8x output zones to be tested during installation via a web browser on a smartphone, tablet or PC. This web interface is also used to configure output zones into groups, allowing them to be controlled as a single zone. Control is available via IR, while advanced two-way control is provided via RS-232 and IP when combined with RTI control solutions. When the job grows, the AD-8x can expand along with it. The eight zone outputs can easily be expanded by stacking up to eight AD-8x units together, for a maximum of 64 zones. The AD-8x from RTI will provide you with clean, stable, reliable power you can count on for years to come.

Part #: 10-210496-23



Key Features

- Eight analog stereo audio output zones with fixed and variable pre-outs.
- Eight analog audio source inputs with independent trim level adjustment.
- Twenty-five watts per channel in every zone.
- Distribute eight audio source inputs to eight zone, expandable to 64 zones by stacking additional AD-8x units.
- Ethernet support and a web interface allows the AD-8x output zones to be tested during installation via a web browser on a smartphone, tablet or PC.
- Web interface allows zones to be configured into groups.
- Accessory wall plate (RSP-1) allows remote source equipment to be connected and controlled remotely over a Cat-5 cable.
- Control options: IR, RS-232 and IP.

Installation Notes

- In the box: AD-8x, AC cable, rack ears (2) with screws, speaker terminal blocks (8), feet (4) with screws.

Specifications

Power	115VAC or 240VAC (Switchable), 230W
Mounting.....	Rack mount or free standing
Dimensions (HxWxD)	5.24in(133mm) x 17.0in(432mm) x 14.75in(375mm)
Weight	24.2lbs (11.0kg)
Local Source Audio Inputs	Eight, RCA jacks x 16
Remote Source Input.....	Four, RJ45 jacks
Remote Source IR Input	One, 3.5mm jack x 4, for IR input
Control Ports.....	One, IR 3.5mm jack, One RS-232, DB9 Bidirectional
Ethernet Port	One, RJ45 Bidirectional control
Trigger Output (Status)	One, 12VDC@15mA
Voltage Output.....	One, 12VDC@500mA
Mute.....	3.5mm jack
Output Zones.....	Eight, two channels each, phoenix connector
Pre-amp Output (fixed or variable)	Eight zones, two channels each, RCA jacks
Rated Power/Channel ...	>25 Watts, 20Hz - 20KHz (RMS, 2 channels driven into 8 ohms)
Total Harmonic Distortion @20W/8 ohm	0.1%
S/N @ Rated power, IEC A-wtd, Source input shorted	82dB (mute +1)
Frequency Response 20Hz to 20KHz @1W/8 ohms	+0.8db / -0.4dB
Channel separation @1KHz	75dB
Bass Control @100Hz / Treble Control @10KHz.....	10dB +/-0.5dB / 10dB +/-0.5dB
Warranty	Three Years (Parts & Labor)

AD-16x Audio Matrix Switch

Ideal for large, multi-zone audio installations, the AD-16x provides routing for 16 audio sources to 16 zones, while RTI Cool Power® amplifiers (CP-450/CP-1650) drive crystal clear audio to every speaker. For added convenience, the AD-16x also features eight remote source inputs, which allows devices located in other rooms to be used as a global source. If the system grows past 16 zones, up to four AD-16x units can be cascaded for up to 64 output zones.* The switch also delivers complete audio management, including parametric equalizing, zone grouping, and balance control — all configurable via a convenient web interface.

Setting the AD-16x apart is the engineering that enables this matrix to become an extension of the RTI ecosystem. At the heart of this powerful integration is the AD64 two-way driver running on an RTI XP processor, providing integrators with unmatched flexibility and programming efficiency. The driver features custom project labeling, allowing integrators to name all of the zones and sources, eliminating tedious programming by ID number. Pushing the user experience to new levels, the driver also allows dynamic audio source management, which tracks the active sources. This allows a user to determine if a source is already in use and select a different one to avoid an inadvertent music change.

Part #: 10-210513-13



Key Features

- Provides routing of 16 stereo audio sources to 16 zones.
- Eight remote source inputs allow devices located in other rooms to be used as a global source using the RSP-1 accessory.
- Up to four AD-16x units may be source-looped, for up to 64 output zones.*
- Custom project labeling allows integrators to name all of the zones and sources for more efficient programming (via AD64 driver).
- Dynamic audio source management tracks the sources that are active, allowing users to select a different one and avoid inadvertent music changes (via AD64 driver).
- Preamp outputs require external amplification via RTI or third-party audio amplifier.
- Eight bands of parametric audio equalizing in all zones.
- Built-in web interface allows zones to be configured and grouped, allowing multiple outputs to be controlled as a single zone.
- Audio input trim adjustment on each source.
- Controlled via IR, or two-way control via RS-232 and IP using RTI control systems.

Installation Notes

- In the box: AD-16x, AD-16x Faceplate, AC cable, rack ears (2) with screws, feet (4) with screws.

Specifications

Power	100VAC ~ 240VAC Switching Poer Supply, 20W
Power switch	Front Panel On/Off control with LED power indicator
Mounting	Rack mount or free standing
Dimensions (w/rack ears & cover) HxWxD	5.3in(133mm) x 16.9in(430mm) x 14.5in(369mm)
Weight	14.5lbs (6.6kg)
Output Zones	Sixteen zones of stereo L/R
.....	16 RCA jack pairs (switchable between fixed or variable)
Audio Source Inputs (Local)	Sixteen, 16 RCA jack pairs
Audio Source Inputs (Remote)	Eight, RJ-45 jacks
Loop Outputs	Sixteen, 16 RCA jack pairs
Control Input / Output (CTRL IN / OUT)	One IN, One OUT, 3.5mm jack
.....	Compatible with industry standard IR repeaters and receivers
Remote Source IR Inputs	Nine, 3.5mm jacks, Eight discrete, One universal (All)
Mute Input	One, 3.5mm jack, Phone Input Sensitivity: AC/DC 3-12VDC
.....	Doorbell Sensitivity: AC/DC 3-12VDC
Trigger Output (Status Jack)	One, 12VDC, 15mA max
+12VDC Voltage Output	One, 12VDC, 500mA max
Serial (RS-232) Port	One, Bi-directional DB9
Ethernet Port	One, 10/100Base-T, RJ45 Connection
Unit ID Numbers	1-8, Set using 3 switches
Total Harmonic Distortion	<0.03%
S/N Rating	92dB (@ mute +1) , 100dB(@ mute)
Frequency Response	20Hz ~ 20KHz +/- 0.5 dB
Input Overload	2.1V
Input Impedance	22K ohms
Channel Separation @1KHz	>60dB
Crosstalk Between Sources	>90dB
Crosstalk Between Zones	90dB
Treble Control @10KHz	8.5dB +/- 0.5 dB
Bass Control Range @100Hz	8.5dB +/- 0.5 dB
Equalizer Bands (8) ... 32Hz, 64Hz, 256Hz, 512Hz, 1024Hz, 2048Hz, 4096Hz, 16380Hz	
Warranty	Three Years (Parts & Labor)

AD-4x/8x/16x Accessories

RSP-1 Remote Source Wallplate

- Two RCA input jacks for connection to the output (left and right) of a remote audio source (Receiver, CD Player etc).
- A 3.5mm stereo mini jack for connection to the output of a remote audio source (iPod®, PC etc).
- A 3.5mm mono mini jack for connection of an IR emitter to control the remote source. IR control delivered from control system.
- Compatible with standard single-gang Decora® style faceplates. (Not Included).
- Standard single-gang electrical box installation.

Part #: 10-210343-14



PDM-1 Phone/Doorbell Mute Wallplate

- A 3.5mm non-shorting stereo mini jack allows easy wiring to AD-4x and AD-8x Audio Distribution Systems, and the AD-16x Matrix Switch.
- Connections for two different doorbell chimes.
- RJ-11 connection for convenient wiring to phone system.
- Compatible with standard single-gang Decora® style faceplates. (Not Included).
- Standard single-gang electrical box installation.

Part#: 10-210342-13

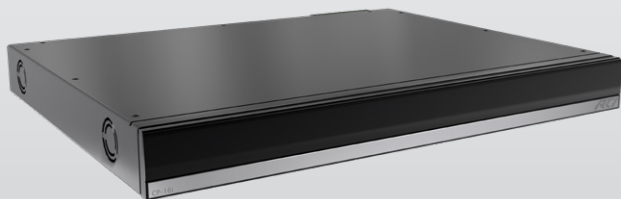


CP-16i 16 Channel Cool Power® Amplifier

The CP-16i Audio Amplifier is ideal for discerning listeners who demand the highest quality audio in every room. Capable of delivering 100W of true audiophile-grade sound to 16 channels, the Cool Power® amplifier easily expands the reach of any audio distribution system. Engineered to perform as well as it sounds, the CP-16i features highly efficient, Class-D amplification, overload detection and a compact chassis that fits nicely into one rack space.

Perfect for residential and commercial settings, the experience is the same in every room - amazing. Put RTI technology to the test - you'll never miss a beat.

Part #: 10-210798-28



Key Features

- Sixteen channel amplifier utilizes ICEpower® technology.
- 100 watts per channel.
- Audio input level adjustment on each channel.
- Bridging audio outputs increases power to 200 watts per channel.
- Easily expands the RTI AD-4x/AD-8x Audio Distribution Systems and AD-16x Audio Matrix.
- Compatible with virtually any audio distribution system.
- Power control via voltage triggers or audio signal sense.
- Signal Sense feature automatically powers the CP-16i on when an audio signal is detected or puts the unit in standby mode when no signal is present.
- Voltage trigger pass-through for powering on/off additional amplifiers.
- Thermal overload and OC (Overcurrent) monitor indicators protect the amplifier.
- Rackmounting requires just 1RU or use included feet for free standing installations.
- Class-D amplifier technology ensures efficient heat dissipation and low power consumption.

Installation Notes

- In the box: CP-16i, power cord, rack ears (2) with screws, feet with Screws (4), speaker terminal blocks (8), IO port terminal block (1).
- NOTE: The CP-16i requires an external preamp for volume control.

Specifications

AC Input Voltage.....	115VAC or 240VAC (Switchable), 230W
Main Power Switch.....	Front Panel On/Off LED
Mounting.....	Rack mount (1RU) or free standing
Dimensions (HxWxD).....	1.7 in (44 mm) x 17.25 in (438 mm) x 8.98 in (228mm)
Weight.....	9.0 lbs (4.08 kg)
Signal Sense.....	Audio input sense, 12V trigger and 3-5V trigger
Number of Channels.....	16 channels in 8 stereo zones: each zone can be bridged
Output Power.....	100W per ch. in SE, 4Ω (1.0%THD+N, 20 Hz - 20kHz)
.....	200W per ch. in BTL, 8Ω (1.0%THD+N, 20Hz - 20kHz)
Amplifier.....	Gain: (20Hz - 20kHz) 25.8dB ±0.5dB
.....	Amplifier Input: Single Ended input - 1 Vrms max Input Voltage without clipping
.....	Amplifier Output: Single Ended output stage - GND referenced
.....	Max Output Voltage without clipping is 28Vp
THD + N.....	1.0%, 4Ω, SE, f=100Hz, Po=1W
Dynamic Range.....	110dBA SE, 115dBA BTL
Idle Noise.....	50uV, A-weighted, 20Hz-20kHz
Upper Bandwidth, -3dB.....	100 kHz, 4Ω, SE
.....	120 kHz, 8Ω, SE
Frequency Response.....	±0.4dB, 10Hz - 20kHz, all loads
Input Impedance.....	47K Ω
Output Serial Impedance.....	30m Ω, fs1kHz
Thermal dissipation.....	2 low noise fans mounted in side panels
Thermal dissipation heat loss.....	0.23 W / 0.8 BTU/hr, standby
.....	40 W / 135.5 BTU/hr, idle, all ch.
.....	100 W / 341 BTU/hr, max output power, all, ch. driven
Warranty.....	Three Years (parts & labor)

RSO-1 Digital to Analog Audio Converter

The RSO-1 makes it simple to deliver optical digital audio from devices such as Blu-ray players, media streamers or TVs to an RTI AD-4x/AD-8x/AD-16x distributed audio system.

Part #: 10-210809-21



Key Features

- Converts your Optical Digital signal up to 24bit/192kHz into High Resolution Superb S/N ratio and sound quality Stereo Audio signals.
- 24 bit 192kHz Hi-Res Stereo DAC with 2Vrms ground referenced outputs.
- Supports all common audio supplying rates between 8kHz and 192kHz using all common MCLK fs rates.
- Proprietary designed Advanced jitter attenuating PLL with low intrinsic period jitter of 50 ps RMS.
- Plug & Play Module.
- Super linear by design down to + - 0.5dB and down to - 90dB level for superb sound quality at low level.

Installation Notes

- In the box: RSO-1, 3" cable RJ-45 to RJ-45.

Specifications

0dB Output Level (Ref to full scale).....	2 Volts (rms)
Output Impedance.....	56 Ohm
Frequency Resonse.....	20Hz - 20kHz +/- 0.2dB
Signal to Noise Ratio (A-weighted) 20Hz - 20kHz.....	105dB
THD @ 0dB / -10dB.....	0.017% / 0.007%
Separation (1 KHz).....	95dB
Dynamic Range.....	100dB
Linearity down to -90dB.....	+/- 0.5dB
Dimensions (HxWxD).....	2.83" (72mm) x 0.94" (24mm) x 0.86" (22mm)
Weight.....	0.6oz (71g)
Warranty.....	Three Years (Parts & Labor)

AMR-220 2x1 Audio Mixer Amplifier

The AMR-220 is a compact-sized Class-D digital mixer/amplifier for classroom or meeting room applications requiring switching of two audio sources (e.g., laptops, video conference systems). Additionally, a microphone can be mixed with the line-level audio sources. The adjustable balanced/unbalanced microphone input supports condenser, dynamic or wireless microphones.

A loop output can be used to share the same audio sources with multiple AMR-220s that power speakers in different audio zones. The AMR-220 offers various control options, including RS-232, as well as a convenient top control panel.

Part #: 10-210656-21



Key Features

- Two input, one output audio mixer/amplifier.
- Two analog audio inputs (switchable).
- Balanced/unbalanced adjustable microphone input with 48V phantom power for condenser, dynamic or wireless microphones.
- Supports microphone mixing to an audio line source.
- Built-in Class-D amplifier
- Power Output: 2 x 20 Watts (4 Ohms) or 1 x 40 Watts bridged (8 Ohms).
- EQ control (bass / treble).
- RS-232 control.
- Audio loop output to share audio sources with multiple amplifiers.
- Compact form factor with noiseless convection cooler.

Installation Notes

- In the box: AMR-220, terminal blocks (2), power adapter, rubber feet (4).

Specifications

Power Supply+24 VDC
Audio InputOne Line Input Stereo (RCA jack), One Line Input Stereo (3.5 mm jack)
Microphone InputOne balanced/unbalanced (3-pin Phoenix),Switchable Line/48V Phantom Power
Input Impedance>10K ohms
Audio OutputOne Stereo Speaker Output (4-pin terminal block),One Loop Output (3.5 mm jack)
Rated Output Power2 x 20 Watts @ 4 Ohms / 1 x 40 Watts bridged @ 8 Ohms
Speaker Impedance4 to 8 Ohms
Frequency Response20Hz to 20KHz
Bandwidth20Hz to 25KHz
Signal-to-Noise Ratio80dB at maximum output
Channel Separation>75dB@20Hz to 20KHz
Voltage Gain32dB
CMRR>70dB@20Hz~20KHz
Total Harmonic Distortion + Noise @1KHz / 20KHz1% / 0.3% at nominal level
Front Panel Control5 Buttons for Input Select, Volume and EQ
RS232 ControlOne, Bidirectional control (3-pin Phoenix Connector)
Dimensions WxHxD4.84" (123mm) x 1.55" (39.5mm) x 3.42" (87mm)
WarrantyThree Years (Parts & Labor)

AMR-350 3x1 Audio Amplifier

The AMR-350 is a compact-sized Class-D digital amplifier for classroom or meeting room applications requiring switching of three audio sources (e.g., laptops, video conference systems, Blu-ray players).

AMR-350 features two analog audio inputs and one digital optical audio input. The Class-D amplifier powers the connected speakers with 2 x 50 Watts or 1 x 100 Watts in bridge mode. The loop output can be used to share the same audio sources with multiple AMR-350s that connect more speakers in different audio zones. The AMR-350 can be controlled via RS-232, Ethernet, web interface and the front control panel.

Part #: 10-210657-22



Key Features

- Three input, one output audio amplifier.
- Built-in Class-D amplifier
- Power Output: 2 x 50 Watts (4 Ohms) or 1 x 100 Watts bridged (8 Ohms).
- EQ control (bass/treble).
- Volume knob with LED bargraph.
- RS-232 control.
- Ethernet control.
- Web interface for control and configuration.
- Audio loop output to share audio sources with multiple amplifiers.
- Compact form factor with noiseless convection cooler.

Installation Notes

- In the box: AMR-350, terminal blocks (2), power adapter, mounting ears (2) with screws.

Specifications

Power Supply+36 VDC, 2.66A
MountingSurface / wall mount or free standing
Audio InputOne Line Input Stereo (RCA jack),One Line Input Stereo (3.5 mm jack), One Digital Optical Input (TOSLINK)
Input Impedance>10K ohms
Audio OutputOne Stereo Speaker Output (4-pin terminal block),One Loop Output (3.5 mm jack)
Rated Output Power2 x 50 Watts @ 4 Ohms / 1 x 100 Watts bridged @ 8 Ohms
Speaker Impedance4 to 8 Ohms
Damping Factor>100
Frequency Response20Hz to 20KHz
Signal-to-Noise Ratio80dB at maximum output
Channel Separation>75dB@20Hz to 20KHz
Voltage Gain32dB
CMRR>70dB@20Hz~20KHz
Total Harmonic Distortion + Noise @1KHz1% at 50 Watts
Front Panel Control2 Buttons, 1 Knob for Input Select, Volume and EQ
RS232 ControlOne, Bidirectional control (3-pin Phoenix)
Ethernet Control PortOne, 10/100Base-T, RJ45 Connection
Dimensions WxHxD5.82" (148mm) x 1.73" (44mm) x 6.49" (165mm)
WarrantyThree Years (Parts & Labor)

AMV-340 3x1 Audio Mixer Amplifier

The AMV-340 is a compact-sized professional-grade Class-D 70/100V amplifier for commercial distributed speaker systems. Capable of 70 or 100 Volt transmission of audio signals, the amplifier allows the distance between amplifier and speaker to be extended by a factor of 10 and more.

AMV-340 is designed for hotel, bar/restaurant grocery store application or any application where long-distance wiring of multiple speakers is required. Also, it can be used as a PA system, playing background music and making announcements via the connected microphone.

Three switchable audio inputs allow up to three analog/digital audio sources to be mixed with the microphone signal. The adjustable balanced/unbalanced microphone input supports condenser, dynamic or wireless microphones. The mixed signal is then available at the 70/100V 40 Watt powered speaker output. The speaker wattage determines the number of speakers that can be used. For instance, up to four 10 Watt speakers can be driven by the AMR-340's 40 Watt amplifier.

The AMV-340 offers various control options with RS-232 as well as a front control panel.

Part #: 10-210655-20



Key Features

- Three input, one output 70/100V audio mixer/amplifier.
- Two analog audio inputs, one digital audio input (switchable).
- Balanced/unbalanced adjustable microphone input with 48V phantom power for condenser, dynamic or wireless microphones.
- Supports microphone mixing to an audio line source.
- Fast switching speed.
- Built-in Class-D amplifier.
- Power Output: 40 Watts, 70/100 Volts.
- EQ control (bass / treble).
- RS-232 control.
- Compact form factor with noiseless convection cooler.

Installation Notes

Note: To avoid damage to the speakers, only connect 70 or 100 Volt speakers or use regular speakers with step-down transformers.

- In the box: AMV-340, terminal block (1), power adapter, RS232 cable (1), rubber feet (4), mounting ears (2) with screws.

Specifications

Power Supply	+24 VDC, 2.71A
Mounting.....	Surface / wall mount or free standing
Audio Input	One Line Input Stereo (RCA jack)
.....	One Line Input Stereo (3.5 mm jack), One Digital Optical Input (TOSLINK)
Microphone Input.....	One balanced/unbalanced (3-pin Phoenix Connector),
.....	Switchable Line / 48V Phantom Power
Input Impedance.....	>10K ohms
Audio Output.....	70/100 Volts, switchable (4-pin terminal block)
Rated Output Power.....	40 Watts
Frequency Response	120Hz to 20KHz
Bandwidth.....	120Hz to 20KHz
Signal-to-Noise Ratio.....	80dB at maximum output
Channel Separation.....	>75dB@20Hz to 20KHz
Voltage Gain.....	26dB
CMRR.....	>70dB@120Hz~20KHz
Total Harmonic Distortion + Noise @1KHz.....	1% at nominal level
Total Harmonic Distortion + Noise@20KHz.....	0.3% at nominal level
Front Panel Control	5 Buttons for Input Select, Volume and EQ
RS232 Control.....	One, Bidirectional control (3-pin Phoenix connector)
Dimensions WxHxD.....	5.11" (130mm) x 1.73" (44mm) x 5.66" (144mm)
Weight	1.89lbs (860g)
Warranty.....	Three Years (Parts & Labor)

VIP-UHD-CTRL Video over IP Control Module

The RTI Video over IP (VIP) distribution platform enables distribution of 4K video over a 1GB Network switch to virtually unlimited endpoints. The result is an exceptionally flexible and scalable system that be installed in minutes and controlled natively within the RTI control environment.

The VIP-UHD-CTRL Control Module allows advanced control from any RTI control processor using TCP/IP, RS-232 and IR, and features a web interface module for easy configuration of the system. The Control Module eliminates the need for a deep understanding of complex network infrastructures, yet it is powerful enough to allow independent routing of IR, RS-232, USB / KVM, Audio and Video.

VIP-UHD-CTRL

Part #: 10-210823-17

RM-4VIP-2 Rack Mount Kit

Part #: 10-210825-19

NEW



Key Features

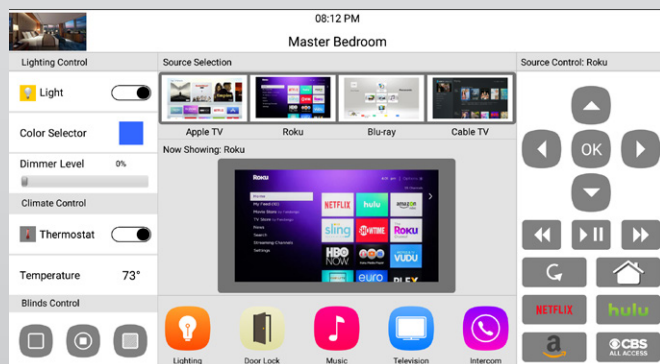
- Simplified APEX integration with IR, RS-232, or TCP/IP control.
- Wizard-based user interface enables fast and automated configuration of the system. No need to manually assign IP addresses.
- Advanced signal management for independent routing of IR, RS-232, USB / KVM, audio and video.
- Powerful enough to control thousands of end points and multiple videowalls in one system

Installation Notes

- In the box: VIP-UHD-CTRL, IR Control Cable – 3.5mm to 3.5mm Cable (1), 6-pin Phoenix Connector (1), Mounting Kit (1)
- Supported network switches for easy integration: Luxul AMS & XMS Series, Cisco SG350 & SG550 Series, Ubiquiti Edge Series, Araknis AN-210, AN-310, Pakedge PK-SX

Specifications

Power Supply	PoE or 12V/1A DC
Dimensions WxDxH.....	3.8in(96mm) x 4.3in(110mm) x 1in(26mm)
Mounting.....	Free standing
Shipping Weight	1.3lbs (0.6kg)
Ethernet Ports.....	2 x LAN RJ45 Connector (1x PoE support)
RS-232 Serial Port.....	1 x DB-9 female
IR Input Ports.....	1 x 3.5mm Stereo Jack
Warranty	Three Years (Parts & Labor)



Custom User Interfaces VIP-UHD-CTRL

VIP-UHD-TX 4K Video over IP Transmitter

The VIP-UHD-TX is an industry-leading 4K HDCP 2.2 HDMI transmitter using visually lossless compression technology to deliver HDMI, Bi-directional IR, RS-232 & USB/KVM up to lengths of 100m over standard network architecture. The VIP-UHD-TX can be powered via PoE from the Network switch or locally should the switch not support PoE. With multiple configuration options available, the VIP solution is ideal for both commercial and residential installations.

VIP-UHD-TX

Part #: 10-210821-15

RM-4VIP-2 Rack Mount Kit

Part #: 10-210825-19

IRC-SM12V Infrared Adapter Cable

Part #: 40-211168-23

NEW



Key Features

- Advanced 4K UHD video over 1Gb Network
- Extends HDMI up to a distance of 328ft/100m over a single CAT-5e or higher cable
- Supports up to 4K HDR UHD video sources (3840 x 2160 @30Hz 4:4:4, 4096 x 2160 @24Hz 4:4:4, and 4K @60Hz 4:2:0)
- Supports all known HDMI audio formats including Dolby TrueHD®, Dolby Digital Plus®, and DTS-HD Master Audio® transmission
- PoE powered to keep the rack clean and reduce the need for extra power cords
- HDCP 2.2 compliant with advanced EDID management
- Analog audio breakout
- LAN loop-out for one-to-many extender mode

Installation Notes

- In the box: VIP-UHD-TX, IR Receiver (1), IR Transmitter (1), Serial 3-pin Phoenix Connector (1), Mounting Kit (1)
- Note: When passing an IR signal from the control processor to the VIP-UHD-TX the IRC-SM12V is required. Sold separately.

Specifications

Power Supply	PoE or 24-56V 1A DC
Dimensions WxDxH.....	7.4in(190mm) x 4.5in(114mm) x 1in(26mm)
Mounting.....	Rack mount with Rack-Mount Kit (sold separately) or free standing
Shipping Weight	1.8lbs (0.8kg)
Video Input	1 x HDMI Type A, female
Video Output.....	1 x LAN RJ45 Connector
Audio Input	1 x 3.5mm L/R analog audio
Audio Output.....	2 x RCA L/R analog audio
Ethernet Ports.....	1 x LAN RJ45 Connector
RS-232 Serial Port.....	1 x 3 Pin Phoenix Connector
USB/KVM Port.....	1 x USB-Type B
IR Input	1 x 3.5mm Stereo Jack
IR Output	1 x 3.5mm Mono Jack
Firmware Update	1 x Micro USB
Warranty	Three Years (Parts & Labor)

VIP-UHD-RX 4K Video over IP Receiver

The VIP-UHD-RX is an industry-leading 4K HDCP 2.2 HDMI receiver using visually lossless compression technology to deliver HDMI, Bi-directional IR, RS-232 & USB/KVM up to lengths of 100m over standard network architecture. The VIP-UHD-RX can be powered via PoE from the Network switch or locally should the switch not support PoE. With multiple configuration options available the VIP solution is ideal for both commercial and residential installations.

VIP-UHD-RX

Part #: 10-210822-16

RM-4VIP-2 Rack Mount Kit

Part #: 10-210825-19

IRC-SM12V Infrared Adapter Cable

Part #: 40-211168-23

NEW



Key Features

- Advanced 4K UHD video over 1Gb Network
- Extends HDMI up to a distance of 328ft/100m over a single CAT-5e or higher cable
- Supports up to 4K HDR UHD video sources (3840 x 2160 @30Hz 4:4:4, 4096 x 2160 @24Hz 4:4:4, and 4K @60Hz 4:2:0)
- Supports all known HDMI audio formats including Dolby TrueHD®, Dolby Digital Plus®, and DTS-HD Master Audio® transmission
- PoE powered to keep the rack clean and reduce the need for extra power cords
- HDCP 2.2 compliant with advanced EDID management
- Analog audio breakout
- LAN loop-out for one-to-many extender mode

Installation Notes

- In the box: VIP-UHD-RX, IR Receiver (1), IR Transmitter (1), Serial 3-pin Phoenix Connector (1), Mounting Kit (1)
- Note: When passing an IR signal from the control processor to the VIP-UHD-RX the IRC-SM12V is required. Sold separately.

Specifications

Power Supply	PoE or 24-56V 1A DC
Dimensions WxDxH.....	7.4in(190mm) x 4.5in(114mm) x 1in(26mm)
Mounting.....	Rack mount with Rack-Mount Kit (sold separately) or free standing
Shipping Weight	1.8lbs (0.8kg)
Video Input	1 x LAN RJ45 Connector
Video Output.....	1 x HDMI Type A, female
Audio Output.....	2 x RCA L/R analog audio
Ethernet Ports.....	1 x LAN RJ45 Connector (Video Extension)
RS-232 Serial Port.....	1 x 3 Pin Phoenix Connector
USB/KVM Port.....	2 x USB-Type A
IR Input	1 x 3.5mm Stereo Jack
IR Output	1 x 3.5mm Mono Jack
Firmware Update	1 x Micro USB
Warranty	Three Years (Parts & Labor)

Video Distribution - HDBaseT & Control

VXP-82 8x2 All-in-One Control Processor & AV Presentation Switcher

The VXP-82 combines a robust control processor with a built-in Audio/Video presentation switcher to deliver a single-box solution for conference rooms, classrooms, and lecture halls.

Part #: 10-210638-21

Detailed Info in the
Collaboration Section:

[More Info](#)



Video Distribution - HDBaseT

VSS-51 5x1 HDBT Presentation Switcher Set

The VSS-51 Presentation Scaler Switcher Set is the perfect AV solution in conference rooms, classrooms and lecture halls.

Detailed Info in the
Collaboration Section:

[More Info](#)

Part #: 10-210651-16



VXU-SC Video Conferencing & Collaboration

The VXU-SC System is the perfect solution for simple, cost-effective media sharing and collaboration in classrooms and meeting spaces.

Detailed Info in the
Collaboration Section:

[More Info](#)

Part #: 10-210800-12



VX44-18G-KIT 4 x 4 4K HDBaseT™ Matrix Switcher

The RTI 4x4 HDBaseT™ Matrix combines exceptional performance with outstanding value for custom integrators world-wide. The VX44-18G-KIT is an HDMI 2.0 4K 60Hz 4:4:4 HDCP 2.2 matrix using Color Space Conversion (CSC) technology to deliver HDMI, Bi-directional IR and PoC up to lengths of 70m over a single CAT-5e or higher cable. The Matrix delivers advanced features including simultaneous HDBaseT™/HDMI on output 1, video down-conversion on HDBaseT™ outputs and a web browser interface module for simple configuration of the Matrix. Four (4) receivers are included in this kit.

VX44-18G-Kit

Part #: 10-210818-21

IRC-SM12V Infrared Adapter Cable

Part #: 40-211168-23

NEW



Key Features

- Advanced HDBaseT™ technology enables distribution of video and audio over a single CAT-5e or higher cable
- Advanced Color Space Conversion (CSC) supports HDMI 2.0 18Gbps specification including HDR
- The four (4) HDMI inputs can be independently routed to four (4) HDBaseT™ outputs with output 1 featuring simultaneous HDMI and HDBaseT™ output
- Video down-conversion on HDBaseT™ outputs allows a display only capable of supporting lower video resolutions (4K 60Hz 4:2:0 or 1080p) to receive 4K 60Hz 4:4:4 video content while still showing maximum original 4K UHD resolution on remaining video outputs
- Supports 4K 60Hz 4:4:4 UHD video up to 131ft (40m) and 1080p video up to 131ft (70m)
- Supports all industry standard video resolutions including VGA-WUXGA and 480i-4K and all known HDMI audio formats including Dolby TrueHD®, Dolby Atmos®, Dolby Digital Plus® and DTS-HD Master Audio® transmission
- Control via front panel , IR, RS-232 and TCP/IP
- Supports PoC (Power over Cable) to power compatible HDBaseT™ receivers
- Advanced EDID management and HDCP 2.2 compliant

Installation Notes

- In the box: VX44-18G, VRX70-18G (1), Rack Mounting Kit (1), Remote Control (1), IR Emitters (4), IR Receivers (5), RS-232 Control Cable (1), IR Control Cable - 3.5mm-3.5mm Cable (1), Power Cable (1)
- Note: When passing an IR signal from the control processor to the VX44-18G the IRC-SM12V is required. Sold separately.

Specifications

VX44-18G HDBaseT™ Matrix Switcher

Video Input Connectors	4 x HDMI Type A, 19-pin, female
Video Output Connectors	1 x HDMI Type A, 19-pin, female
.....	4 x HDBaseT™ RJ45 connector
HDBaseT™ Transmission Distance	1080p@50/60Hz ≤ 131ft (70m)
.....	3840 x 2160 @50/60Hz 4:4:4 ≤ 229ft (40m)
Max. Bandwidth	18Gbps
RS-232 serial port.....	1 x 3-Pin Phoenix Connector
TCP/IP Control	1 x RJ45, female
IR Input ports	5 x 3.5mm Stereo Jack
IR Output ports	4 x 3.5mm Mono Jack
Rack-Mountable	1 U rack height, Rack Ears included
Dimensions (W x D x H)	17.2" x 15.1" x 2.1" (437mm x 384mm x 53mm)
Shipping Weight	11lbs. (5.0kg)
Power Supply	115VAC or 240VAC
Warranty	Three Years (Parts & Labor)

VRX70-18G HDBaseT™ Receiver

Video Input Connectors	1 x HDBaseT™ RJ45 Connector
Video Output Connectors	1 x HDMI Type A, 19-pin, female
Audio Input Connectors	1 x Toslink (S/PDIF)
Audio Output Connectors	1 x Toslink (S/PDIF), 1 x 3.5mm L/R Analog Audio
HDBaseT™ Transmission Distance	1080p@50/60Hz ≤ 131ft (70m)
.....	3840 x 2160 @50/60Hz 4:4:4 ≤ 229ft (40m)
Max. Bandwidth	18Gbps
RS-232 serial port.....	1 x 3-Pin Phoenix Connector
IR Input ports	1 x 3.5mm Stereo Jack
IR Output ports	1 x 3.5mm Mono Jack
Mounting Kit.....	Included
Dimensions (W x D x H)	5.5" x 3.3" x .7" (140mm x 84mm x 18mm)
Shipping Weight	1.3lbs. (0.6kg)
Power Supply	1x 12V/1A DC, Screw Connector
Warranty	Three Years (Parts & Labor)

VX88-18G 8 x 8 4K HDBaseT™ Matrix Switcher

The 8x8 HDBaseT™ Matrix combines exceptional performance with outstanding value for custom integrators world-wide. The VX88-18G is a HDMI 2.0 4K 60Hz 4:4:4 HDCP 2.2 matrix using Color Space Conversion (CSC) technology to deliver HDMI, Bi-directional IR and PoC up to lengths of 70m over a single CAT-5e or higher cable. The Matrix delivers advanced features including simultaneous HDBaseT™/HDMI on output 1, video down-conversion on HDBaseT™ outputs and a web browser interface module for simple configuration of the Matrix.

VX88-18G

Part #: 10-210819-22

IRC-SM12V Infrared Adapter Cable

Part #: 40-211168-23

NEW



Key Features

- Advanced HDBaseT™ technology enables distribution of video and audio over a single CAT-5e or higher cable
- Advanced color Space Conversion (CSC) supports HDMI 2.0 18Gbps specification including HDR
- The eight (8) HDMI inputs can be independently routed to eight (8) HDBaseT™ outputs with output 1 featuring simultaneous HDMI and HDBaseT™ output
- Video down-conversion on HDBaseT™ outputs allows a display only capable of supporting lower video resolutions (4K 60Hz 4:2:0 or 1080p) to receive 4K 60Hz 4:4:4 video content while still showing maximum original 4K UHD resolution on remaining video outputs
- Supports 4K 60Hz 4:4:4 UHD video up to 131ft (40m) and 1080p video up to 131ft (70m)
- Supports all industry standard video resolutions including VGA-WUXGA and 480i-4K and all known HDMI audio formats including Dolby TrueHD®, Dolby Atmos®, Dolby Digital Plus® and DTS-HD Master Audio® transmission
- Control via front panel, IR, RS-232 and TCP/IP
- Supports PoC (Power over Cable) to power compatible HDBaseT™ receivers
- Advanced EDID management and HDCP 2.2 compliant

Installation Notes

- In the box: VX88-18G, Rack Mounting Kit (1), Remote Control (1), IR Emitters (8), IR Receivers (9), RS-232 Control Cable (1), IR Control Cable - 3.5mm-3.5mm Cable (1), Power Cable (1)
- Note: When passing an IR signal from the control processor to the VX88-18G the IRC-SM12V is required. Sold separately.

Specifications

Video Input Connectors	8 x HDMI Type A, 19-pin, female
Video Output Connectors	1 x HDMI Type A, 19-pin, female
.....	8 x HDBaseT™ RJ45 connector
HDBaseT™ Transmission Distance	1080p@50/60Hz ≤ 229ft (70m)
.....	3840 x 2160 @50/60Hz 4:4:4 ≤ 131ft (40m)
Max. Bandwidth	18Gbps
RS-232 serial port	1 x 3-Pin Phoenix Connector
TCP/IP Control	1 x RJ45, female
IR Input ports	9 x 3.5mm Stereo Jack
IR Output ports	8 x 3.5mm Mono Jack
Rack-Mountable	1 U rack height, Rack Ears included
Dimensions (W x D x H)	17.2" x 15.1" x 2.1" (437mm x 384mm x 53mm)
Shipping Weight	11lbs. (5.0kg)
Power Supply	115VAC or 240VAC
Warranty	Three Years (Parts & Labor)

VRX70-18G 4K HDBaseT™ Receiver

The VRX70-18G HDMI 2.0 4K60Hz 4:4:4 (18Gbps) HDCP2.2 HDBaseT™ Receiver pairs perfectly with the VX44-18G-Kit* and the VX88-18G and offers market-leading features and outstanding value, including Color Space Conversion (CSC) technology. The product extends HDMI, Bi-directional IR, and is powered by the matrix up to lengths of 70m (4K 40m).

Part #: 10-210820-14

NEW



Key Features

- Advanced HDBaseT™ technology enables distribution of video and audio over a single CAT-5e or higher cable
- Advanced color Space Conversion (CSC) supports HDMI 2.0 18Gbps specification including HDR
- Supports all industry standard video resolutions including VGA-WUXGA and 480i-4K and all known HDMI audio formats including Dolby TrueHD®, Dolby Atmos®, Dolby Digital Plus® and DTS-HD Master Audio® transmission
- HDMI re-clocking to help solve HDMI HDCP, compatibility and handshaking issues
- IR pass-through to compatible HDBaseT™ devices
- Supports bi-directional PoC (Power over Cable) from VX88-18G
- HDCP 2.2 support

Installation Notes

- In the box: VRX70-18G, Mounting Kit (1)

Specifications

Video Input Connectors	1 x HDBaseT™ RJ45 Connector
Video Output Connectors	1 x HDMI Type A, 19-pin, female
Audio Input Connectors	1 x Toslink (S/PDIF)
Audio Output Connectors	1 x Toslink (S/PDIF), 1 x 3.5mm L/R Analog Audio
HDBaseT™ Transmission Distance	1080p@50/60Hz ≤ 131ft (70m)
.....	3840 x 2160 @50/60Hz 4:4:4 ≤ 229ft (40m)
Max. Bandwidth	18Gbps
RS-232 serial port	1 x 3-Pin Phoenix Connector
IR Input ports	1 x 3.5mm Stereo Jack
IR Output ports	1 x 3.5mm Mono Jack
Mounting Kit	Included
Dimensions (W x D x H)	5.5" x 3.3" x .7" (140mm x 84mm x 18mm)
Shipping Weight	1.3lbs. (0.6kg)
Power Supply	1x 12V/1A DC, Screw Connector
Warranty	Three Years (Parts & Labor)

VEX100-18G-KIT 4K HDBaseT Extender Kit

The VEX100-18G-KIT offers the very best in extender performance and flexibility. This industry-leading 4K HDBaseT™ solution delivers ultra-high resolution HDMI video with HDCP 2.2 support, bi-directional IR, RS232 and PoH (Power over HDBaseT) up to lengths of 328ft/100m over a single CAT-5e or higher cable. The VEX100-18G-KIT also provides installers the ability to extend the control network without the need for additional cables.

VEX100-18G-KIT

Part #: 10-210824-18

IRC-SM12V Infrared Adapter Cable

Part #: 40-211168-23

NEW



VEX100-18G-TX Front View



VEX100-18G-TX Rear View



VEX100-18G-RX Front View



VEX100-18G-RX Rear View

Key Features

- Advanced HDBaseT™ technology offering uncompressed video and audio with zero latency
- Supports 4K UHD video up to 70m (Full 3840 x 2160 @50/60Hz 4:4:4 resolution) and 1080P up to a distance of 100m over single CAT-5e or higher cable
- Supports ARC (Audio Return Channel) from connected display via HDMI or optical digital inputs
- Supports Bi-directional IR from all input and output locations and bi-directional RS-232 pass through
- Supports all known HDMI audio formats including Dolby TrueHD®, Dolby Atmos®, Dolby Digital Plus® and DTS-HD Master Audio® transmission
- Extend your control network with an integrated Ethernet port (LAN Serving).
- Supports bi-directional PoH (Power over HDBaseT™) to power extender from either Matrix, transmitter or receiver end
- HDCP 2.2 support

Installation Notes

- In the box: VEX100-18G-TX Transmitter (1), VEX100-18G-RX Receiver (1), IR Receiver (1), IR Transmitter (1), 15V/2A DC power supply (1), Mounting brackets (2).
- Note: When passing an IR signal from the control processor to the VEX100-18G-TX or RX the IRC-SM12V is required. Sold separately.

Specifications

VEX100-18G-TX Transmitter

Video Input Connectors	1 x HDMI Type A, female
Video Output Connectors	1 x HDBaseT™ RJ45 Connector
Audio Output Connectors	2 x RCA (L/R), 1 x Optical (SPDIF)
Ethernet Port	1 x RJ45 Connector
RS-232 Serial Port	1 x DB-9 female
IR Input Ports	1 x 3.5mm Stereo Jack
IR Output Ports	1 x 3.5mm Mono Jack
Dimensions	5.3" x 5.1" x .9" (134mm x 129mm x 22mm)

VEX100-18G-RX Receiver

Video Input Connectors	1 x HDBaseT™ RJ45 Connector
Video Output Connectors	1 x HDMI Type A, female
Audio Input Connectors	1 x Toslink
Ethernet Port	1 x RJ-45 Connector
RS-232 Serial Port	1 x DB-9 female
IR Input Ports	1 x 3.5mm Stereo Jack
IR Output Ports	1 x 3.5mm Mono Jack
Dimensions	5.3" x 5.1" x .9" (134mm x 129mm x 22mm)

General Specs

Power Supply	1 x 12V/2A DC, Screw Connector
HDBaseT™ Transmission Distance	1080p@50/60Hz ≤ 328ft (100m)
	3840 x 2160 @50/60Hz 4:4:4 ≤ 229ft (70m)
Max. Bandwidth	18Gbps
Shipping Weight (Kit)	3.5lbs (1.6kg)
Warranty	Three Years (Parts & Labor)

VMS-741 7 x 1 Multiviewer Scaler 4K Presentation Switcher

The VMS-741 is designed to process and switch audio and video signals in commercial settings such as meeting spaces, control rooms and sports bars.

Part #: 10-210665-21

Detailed Info in the
Multiviewer Section:

[More Info](#)



VDA-12 1x2 HDMI 2.0 Splitter

The VDA-12 is an HDMI splitter that delivers 4K video signal from one source to two displays simultaneously. Compliant with HDMI2.0 and HDCP2.2, the VDA-12 supports resolutions up to 4K and supports 3D at 1080.

By auto-detecting the input resolution and with the built-in EDID management, the VDA-12 automatically adjusts the output resolution to fit both connected displays.

Part #: 10-210652-17



Key Features

- Provides distribution of one video source to two displays / projectors simultaneously.
- HDCP 2.2 compliant, supporting HDMI 2.0, backwards compatible with all previous HDMI standards.
- Supports HDMI / DVI resolutions up to 4K@60Hz 4:4:4.
- Up to 10m cable length for 4K resolution when using 24 AWG HDMI cables.
- Auto-detect of input resolution.
- Built-in EDID management adjusts output resolution to fit all connected displays.
- LEDs indicate connection and HDCP compliance status.

Installation Notes

- In the box: VDA-12, power adapter, rubber feet (4), mounting ears (2) with screws.

Specifications

Power Supply	+5 VDC, 2A
Mounting	Wall / Surface mount or Free standing
Dimensions WxHxD	4.02" (102mm) x 0.43" (11mm) x 2.75" (70mm)
Weight	0.21lb (97g)
Digital Video Input	One HDMI
Digital Video Output	Two HDMI
Compliance	HDMI 2.0, HDCP 2.2
Resolution Range	720x480@60Hz to 4K@60Hz 4:4:4, 1080p 3D
Supported Audio Formats	Dolby Digital, DTS, DTS-HD, PCM
EDID Management	Built-in EDID management
Front Panel LEDs	Connection Status, HDCP Compliance Status
USB	Micro USB for Firmware Update
Warranty	Three Years (Parts & Labor)

VDA-14 1x4 HDMI 2.0 Splitter

The VDA-14 is an HDMI splitter that delivers 4K video signal from one source to up to four displays simultaneously. Compliant with HDMI2.0 and HDCP2.2, VDA-14 supports resolutions up to 4K and supports 3D at 1080.

By auto-detecting the input resolution and with the built-in EDID management, the VDA-14 automatically adjusts the output resolution to fit the connected displays.

Part #: 10-210653-18



Key Features

- Provides distribution of one video source to up to four displays / projectors simultaneously.
- HDCP 2.2 compliant, supporting HDMI 2.0, backwards compatible with all previous HDMI standards.
- Supports HDMI / DVI resolutions up to 4K@60Hz 4:4:4.
- Up to 10m cable length for 4K resolution when using 24 AWG HDMI cables.
- Auto-detect of input resolution.
- Built-in EDID management adjusts output resolution to fit all connected displays.
- LEDs indicate connection and HDCP compliance status.

Installation Notes

- In the box: VDA-14, power adapter, rubber feet (4), mounting ears (2) with screws.

Specifications

Power Supply	+5 VDC, 2A
Mounting	Wall / Surface mount or Free standing
Dimensions WxHxD	5.98" (152mm) x 0.43" (11mm) x 2.75" (70mm)
Weight	0.3lb (140g)
Digital Video Input	One HDMI
Digital Video Output	Two HDMI
Compliance	HDMI 2.0, HDCP 2.2
Resolution Range	720x480@60Hz to 4K@60Hz 4:4:4, 1080p 3D
Supported Audio Formats	Dolby Digital, DTS, DTS-HD, PCM
EDID Management	Built-in EDID management
Front Panel LEDs	Connection Status, HDCP Compliance Status
USB	Micro USB for Firmware Update
Warranty	Three Years (Parts & Labor)

VXP-82 8x2 All-in-One Control Processor & AV Presentation Switcher

The VXP-82 combines a robust control processor with a built-in Audio/Video presentation switcher to deliver a single-box solution for conference rooms, classrooms, and lecture halls. VXP-82 enables control from any RTI touch panels, keypads, remote controls, or mobile apps, while the 8x2 switcher distributes Audio/Video signals over HDMI and HDBaseT simultaneously to up to two rooms. Existing in-room USB web conferencing cameras, microphones and speakers can be connected and switched as well as traditional analog or digital audio and video sources such as computers / laptops, document cameras, media servers and streamers, DVD players, and microphones.

Thus, the VXP-82 is ideal for BYOD settings and social distancing office configurations. KVM control over USB allows for multiple presentation control options using USB keyboards and mice in different spots in the same or secondary room. Additional features include a 4K video scaler and an audio mixer.

The included APEX file significantly reduces on-site configuration while the single box solution reduces cabling and installation time.

Part #: 10-210638-21

Time-saving
APEX File
included

NEW



Front View



Rear View



User Interface of included APEX file

Key Features

- 8x2 4K All-in-One Scaling Presentation Matrix Switcher.
- Support for HDCP 2.2 and HDMI 2.0.
- Built-in scaler supports up to 4K@60Hz 4:4:4 8bit video output.
- HDBaseT inputs/output using VXP-R/VXP-T Extenders:
 - Cat-5 cable: 4K@60Hz 4:2:0 8bit signal up to 90m/300ft, 1080p@60Hz 4:4:4 8bit signal up to 100m/330ft
 - Cat-6/6a/7 cable: 4K@60Hz 4:2:0 8bit signal up to 100m/330ft, 1080p@60Hz 4:4:4 8bit signal up to 100m/330ft.
- VXP-R/VXP-T HDBaseT Extenders support PoH (Power over HDBaseT) in addition to Ethernet, IR and RS-232 pass-through.*
- Bi-directional KVM functionality for HDMI or HDBaseT outputs - Ideal for presentation settings.*
- Supports de-embedded audio of HDMI and HDBaseT outputs, set independently to output any mixed result.
- Control via front panel, built-in processor, and Web UI.
- Built-in control processor with 128Mb of non-volatile flash memory.
- Control of external devices via six routable IR ports, two RS-232 ports, three relays, three voltage triggers, and three voltage sense inputs.
- Support for RTI wired and wireless controllers (remote controls require RTI RM-433 433MHz or ZM-24 2.4GHz Zigbee antennas).
- Support for RTIPanel App control.
- Flexible installation options with tabletop or rack-mount design.

Installation Notes

- In the box: VXP-82, rack ears (2) with screws (6), power cord, Phoenix connectors (3.5mm, 3 Pins) (2), Phoenix connectors (3.5mm, 5 Pins) (2), terminal blocks (3 x 4 position, 3x 2 position), RS-232 adapters (2).
- Note: Support for PoH, IR/RS-232/Ethernet pass-through and KVM functionality over HDBaseT require VXP-R and VXP-T Extenders.

Specifications

AC Input Voltage	110VAC ~ 240VAC, 50~60Hz
Mounting	Rack mount, 2 RU or free standing
Video Input	Three, HDMI
.....	One, Display Port
.....	Two, VGA (female 15-pin)
.....	Two HDBaseT (PoH) (RJ45)
Video Output	One, HDMI
.....	One, HDBaseT (RJ45)
Resolution Range	800x600@60Hz to 4Kx2K@60Hz
HDBaseT Transmission Distance	1080p@60Hz ≤ 100m
.....	4Kx2K@60Hz ≤ 90m
EDID Management	Built in EDID data and manual EDID management
HDCP	Supports up to HDCP 2.2
Audio Input	Two, Mono analog
.....	Two, 3-pole 3.5mm, Mic/line level
Audio Output	Two, Stereo de-embedded
Phantom Power	Enable/Disable per channel
Analog Line Output with DSP	2-Channel stereo
Frequency Response	20Hz to 20kHz ≤ 3 db
Infrared Output	Six, 3.5mm
.....	One, High output
Infrared Frequency Transmission Range	15kHz - 460kHz
Trigger Outputs	Three, 12 VDC, 100mA max each
Relays	Three, 5 Amps @ 30 VDC
Sense Inputs	Three, 3-24 VDC
RS232 Ports	Two, Bidirectional control (RJ45)
Expansion Port	One, RJ45 Connection
RTICOM Port	One, Zigbee®/RJ45 Connection
Ethernet Port	One, 10/100BaseT, RJ45 - Ethernet Pass-through
LAN Port	One, 10/100BaseT, RJ45 - WebGui access
USB Ports	USB-A: One - scaler upgrade, Two - USB devices (KVM)
.....	Micro-USB: One, Firmware update
.....	USB-B: Two, Host inputs
Dimensions WxHxD	17.32in (440mm) x 3.5in (89mm) x 13in (330mm)
Weight	14 lbs (6.35kg)
Warranty	Three Years (Parts & Labor)

VXP-T HDBaseT Long Range Transmitter VXP-R HDBaseT Long Range Receiver

The VXP-T (transmitter) and VXP-R (receiver) are designed for use with the VXP-82 Presentation Switcher & Control Processor to extend high-resolution video, audio, Ethernet, control and KVM signals over long distances up to 492ft (150m) via a single Cat5e/Cat6 cable. In combination with the VXP-82 multiple video sources can be distributed to up to up to two displays.

Easy wiring and the high bandwidth capability of these Class B HDBaseT extenders make them ideal for any commercial or residential setting where video sources are installed in a central AV rack and TVs or presentation displays are distributed throughout multiple areas such as conference rooms, huddle spaces, restaurant dining rooms, or home media rooms. Both the transmitter and the receiver can also be used as stand-alone signal extension for point-to-point transmission.

VXP-T Transmitter
Part #: 10-210769-26

VXP-R Receiver
Part #: 10-210770-18



VXP-T Front View



VXP-R Rear View



VXP-R and VXP-T
HDBaseT Transmitter & Receiver Rear View
(Sold Separately)

NOTE:

- VXP-T and VXP-R are sold separately.

Key Features

- Support for audio, video, power, Ethernet, RS-232 and IR pass-through over HDBaseT.
- Signal transmission up to 90m/300ft for 4K and 100m/330ft for 1080p via a Cat-5e cable, and up to 100m/330ft for 4K and 1080p via a single Cat-6/6a/7 cable.
- Supports resolution up to 4K@60Hz 4:2:0 8bit and HDCP 2.2 when installed with VXP-T Transmitter.*
- Analog stereo audio pass-through over HDBT.
- S/PDIF digital audio pass-through over HDBT.
- USB Host and Device ports with bi-directional USB pass-through for shared KVM control.
- Built-in 10/100Mb Ethernet Switch.
- One-way PoH (Power over HDBaseT) powers the VXP-R from the VXP-82 All-in-One Presentation Switcher or VXP-T Transmitter.
- Phoenix port for additional power connection.
- Support for standard and locking DC power plugs.
- VXP-T and VXP-R are sold separately

Installation Notes

- In the VXP-T box:
VXP-T Transmitter, mounting brackets (2) with screws, 12VDC/2A power supply (1) with US, EU, UK, AU plugs, Phoenix connector 3.5mm, 3 Pin (1), Phoenix connector 3.5mm, 2 Pin (1).
- In the VXP-R box:
VXP-R Receiver, mounting brackets (2) with screws, Phoenix connector 3.5mm, 3 Pin (1), Phoenix connector 3.5mm, 2 Pin (1).
- Note: Maximum resolution is 4K@30Hz when VXP-T or VXP-R are installed with VXP-82 All-in-One Presentation Switch.

Specifications

VXP-T Transmitter

Video Input	One HDMI
HDBaseT Output	One, HDBaseT (PoH) (RJ45)
Audio	One, Stereo Audio (1 x 3.5mm jack)
Control Signal Ports.....	One in, One Out, Digital Audio (S/PDIF)
Ethernet	Two, RJ45
USB Host.....	One, USB B-Type
USB Device	Two, USB A-Type
Power Supply	12VDC 2A (transmitter powers receiver via Power over HDBaseT)

VXP-R Receiver

HDBaseT Input	One, HDBaseT (PoH) (RJ45)
Video Output.....	One HDMI
Audio	One, Stereo Audio (1 x 3.5mm jack)
Control Signal Ports.....	One In, One Out, Digital Audio (S/PDIF)
Ethernet.....	Two, RJ45
USB Host.....	One, USB B-Type
USB Device	Two, USB A-Type

General

Input/Output Signal Type	HDMI with 4K@60Hz 4:2:0 (or 4K@30Hz when connected with VXP-82), HDCP 2.2, HDBT Compliance.....	HDMI 2.0, HDCP 2.2
Input / Output Resolutions.....	800 x 600@60Hz, 1024 x 768@60Hz, 1280 x 768@60Hz, 1280 x 800@60Hz, 1280 x 960@60Hz, 1280 x 1024@60Hz, 1360 x 768@60Hz, 1366 x 768@60Hz, 1440 x 900@60Hz, 1600 x 900@60Hz, 1600 x 1200@60Hz, 1680 x 1050@60Hz, 1920 x 1200@60Hz, 2048 x 1152@60Hz, 3840 x 2160@24Hz/25Hz/30Hz/50Hz/60Hz*, 4096 x 2160 @24Hz/25Hz/30Hz/50Hz/60Hz*, 1280 x 720P@50Hz/59.94Hz/60Hz, 1920 x 1080P@50Hz/59.94Hz/60Hz	
Color Sampling	4:4:4, 4:2:2, :2:0, Resolutions with an asterisk *: 4:2:0	
Audio Formats	HDMI: PCM, Dolby TrueHD, Dolby Atmos, DTS-HD Master Audio, DTS:X, Line In/Out: PCM2.0, S/PDIF In/Out: Up to PCM5.1	
Max. Bandwidth	10.2 Gbps	
Max. Pixel Clock	297 MHz	
HDBaseT Transmission Distance	1080P@60Hz 3D, 4K@60Hz 4:2:0, 4K@30Hz 4:4:2 ≤330ft (100m)	
.....VXP-T and VXP-R used as stand-alone extender set:	1080p@60Hz ≤492ft (150m)	
Control Method	RS232 Pass through, IR Pass through, Ethernet Pass through, Bi-Directional USB	
Dimensions WxHxD.....	12.08in(306.8mm) x 0.98in(25mm) x 3.89in(98.8mm)	
Weight	1.59 lbs (720g)	
Warranty	Three Years (Parts & Labor)	

VSS-51 (VSW-51 & VSW-51R) 5x1 HDBT Presentation Switcher Set

Made up of the VSW-51 scaler switcher and the VSW-51R HDBaseT receiver, the VSS-51 Presentation Scaler Switcher Set is the perfect AV solution in conference rooms, classrooms and lecture halls. The VSW-51 combines seamless switching with advanced scaling to provide excellent picture quality regardless of the source.

The compact switcher comes with five inputs and accepts a variety of video formats including HDMI, Display Port, VGA, Composite and Component Video (via VGA), and even includes a microphone input. Video output is mirrored to an HDMI port and an HDBaseT output, for delivery of HD video to an additional display via the VSW-51R HDBaseT receiver.

Part #: 10-210651-16



VSS-51 - Presentation Switcher Set with HDBaseT Receiver (included)



VSW-51
Presentation Switcher



VSW-51R
HDBaseT Receiver

Key Features

- High-definition, multi-format 5x1 presentation switcher.
- Includes VSW-51R HDBaseT Receiver.
- Built-in scaler upscales input resolution to up to 1920x1200 output resolution.
- Auto-switching, Quick Switch technology.
- HDMI output
- Mirrored HDBaseT output enables long-distance wiring over CAT cable.
- Supports HDBaseT 4-Play with transmission of video, audio, power (PoH) and control signals (IR / RS-232) over a single CAT cable.
- Provides signal switching of up to 5 video sources.
- Mirrored HDMI and HDBaseT output 230ft (70m) for Full HD video.
- Supports HDMI, Display Port and VGA sources.
- Balanced/unbalanced adjustable microphone input with 48V phantom power for condenser, dynamic or wireless microphones.
- Controllable via front control panel, Infrared, RS-232 or web interface.

Installation Notes

- In the box: VSW-51, VSW-51R, power adapter, RS232 cable (3-pin to DB9), adapter cable VGA to YPbPr, terminal block (3), IR remote, IR receiver (1), mounting ears (4) with screws, rubber feet (8).

Specifications

VSW-51 Presentation Switcher

Power Supply	+24 VDC, 2.71A
Mounting	Surface / wall mount or free standing
Dimensions WxHxD	8.66" (220mm) x 1.73" (44mm) x 2.85" (172.5mm)
Weight	1.76lb (800g)
Digital Video Input	One HDMI/MHL, Two HDMI, One Display Port
Analog Video Input	One VGA, female 15-pin (VGA, YPbPr, Composite Video)
Video Output (mirrored)	One HDMI, One HDBaseT with PoH (RJ45), 1920x1200≤229ft (70m)
Output resolution range	1920x1200, 1920x1080, 1600x1200, 1600x900, 1360x768, 1280x800, 1280x720, 1024x768
Compliance	HDMI 1.4, HDCP 2.2
Audio Line Input	Two Analog Stereo for VGA and Display Port (3.5mm jack)
Microphone Input	One balanced/unbalanced (3-pin Phoenix Connector), Switchable Line / 48V Phantom Power
Audio Input Impedance	>10kOhms
Audio Output	One Dual-Mono Analog Audio(5-pin Phoenix Connector)
Audio Output Impedance	70 Ohms
Frequency Response	20Hz to 20KHz
Stereo Channel Separation	>80dB @ 1kHz
Front Panel Control	6 Buttons, 1 Volume Knob, Bargraph and Status LED
RS-232	One, Bi-directional (3-pin Phoenix) for VSS-51 or remote device through HDBaseT
IR Control of local or remote device	One, 3.5mm jack (IR IN) to IR OUT or HDBaseT to IR OUT on HDBaseT Receiver
USB	Type-A for Firmware Update
Ethernet Port	One, 10/100Base-T (RJ45)
Warranty	Three Years (Parts & Labor)

VSW-51R HDBaseT Receiver (included)

Power Supply	via Power over HDBaseT (PoH)
Mounting	Surface / wall mount or free standing
Input	One HDBaseT with PoH (RJ45)
Output	One HDMI
Compliance	HDMI 1.4, HDCP 2.2
Control Ports	One RS-232 Bi-directional (3-pin Phoenix), One IR in (3.5 mm jack), one IR out (3.5 mm jack)
Warranty	Three Years (Parts & Labor)

VXU-SC Video Conferencing & Collaboration System

The VXU-SC System is the perfect solution for simple, cost-effective media sharing and collaboration in classrooms and meeting spaces. The transmitter and receiver pair, provide AV switching, video and USB extension, allowing multiple users to easily interact with software-based conferencing solutions such as Microsoft Skype®, Cisco WebEx® and Citrix GoToMeeting®.

The VXU-SC transmitter is equipped with HDMI, Display Port, VGA and USB-C inputs, enabling a wide range of devices to share video content. Built-in USB inputs allow shared mouse and keyboard control from all connected devices including PCs, laptops, and interactive displays. The kit also extends USB, allowing inexpensive USB webcams and microphones to be utilized. To eliminate cable clutter, all audio, video, data, control, USB, and Ethernet transmission between the VXU-SC transmitter and receiver is carried over a single HDBaseT link up to 328 feet (100 meters).

Part #: 10-210800-12



VXU-SCT Transmitter



VXU-SCR Receiver

Key Features

- HDMI 2.0 with 4k@60Hz 4:2:0 and HDCP 2.2 compliance.
- HDBaseT connection between transmitter and receiver. Up to 328ft(100m) at 1080p or 295ft(90m) at 4K
- VGA input supports video up to 1920x1200@60Hz.
- Provides switching between a variety of video formats to simplify meeting room device management.
- Built-in USB hubs enable easy connection of devices including keyboards, microphone, speakers, cameras and whiteboards.
- Automatically detects active inputs when sources are connected.
- LAN connection to receiver or transmitter provides network access to users.
- Connected displays can be controlled via CEC commands or front panel buttons.
- Relays can be triggered to control devices e.g., projection screen.
- Support for RS-232 and IR pass through from both the receiver and transmitter.
- De-embedded audio out on VXU-SCR receiver.
- Controllable via front panel buttons, RS-232, GUI, or OSD menu.

Installation Notes

- In the box: VXU-SCT, VXU-SCR, mounting ears with screws (4), plastic cushions (8), 3-Pin to 2-Pin optocoupler cable, phoenix connectors (7), power adapter 12V-2A (2)

Specifications

VXU-SCT Transmitter

Power Supply (included).....Power adapter 12V/1.5A
 Dimensions WxHxD.....8.66in(220mm) x 5.9in(150mm) x 1.65in(42mm)
 Weight2.14lbs (970g)
 Mounting.....Surface / Wall mount / Behind TV
 Video Inputs.....One HDMI, One Display Port, One USB-C, One VGA
 USB Ports.....Two USB-B Host for VGA/Display Port IN and HDMI IN
Three USB-A
 Audio Input.....One Stereo Audio for VGA Source, 3.5mm jack
One Line Stereo, 3.5mm jack
 Video Output.....One HDMI
 HDBaseT Output.....One HDBaseT, up to 10.2 Gbps
 HDBaseT Transmission Distance.....1080p ≤ 328ft (100m), 4K ≤ 295ft (90m)
 Resolution Range HDMI/Display Port.....up to 4K@60Hz 4:2:0 / 4K@30Hz 4:4:4
 Resolution Range VGA.....up to 1920x1200
 Compliance.....HDCP 2.2
 Ethernet Ports.....Two, 10/100Base-T, RJ45
 Control Ports.....One RS-232, 3-pin Phoenix
 Control Ports Pass-Through.....One IR IN, 3.5mm jack, One RS-232, 3-pin Phoenix
 Front Panel.....9 Buttons for Input selection and Display/Screen Control

VXU-SCR Receiver

Power Supply (included).....Power adapter 12V/1.5A
 Dimensions WxHxD.....8.66in(220mm) x 5.9in(150mm) x 1.65in(42mm)
 Weight2.09lbs (950g)
 Mounting.....Surface / Wall mount / Behind TV
 Operating Temperature.....C 0 to +40 degrees F +32 to +104 degrees
 Operating Humidity.....5% to 95% Non-condensing
 Video Inputs.....2 x HDMI
 HDBaseT Input.....One HDBaseT, up to 10.2 Gbps
 HDBaseT Transmission Distance.....1080p ≤ 328ft (100m), 4K ≤ 328ft (100m)
 USB Ports.....Two USB-B Host for HDMI IN
Three USB-A
 Video Output.....One HDMI
 Resolution Range HDMI.....up to 4K@60Hz 4:2:0 / 4K@30Hz 4:4:4
 Audio Output.....One Stereo Audio de-embedded from HDMI OUT
 Compliance.....HDCP 2.2
 Ethernet Ports.....Two, 10/100Base-T, RJ45
 Control Ports.....One RS-232, 3-pin Phoenix
 Control Ports Pass-Through.....One IR OUT, 3.5mm jack, One RS-232, 3-pin Phoenix
 Relay Outputs.....Two, 30VDC/2A 3-pin Phoenix
 Front Panel.....6 Buttons for Input selection and Display/Screen Control
 Warranty.....Three Years (Parts & Labor)

All features and specifications subject to change without notice

VMS-741 7 x 1 Multiviewer Scaler 4K
Presentation Switcher

The VMS-741 is designed to process and switch audio and video signals in commercial settings such as meeting spaces, control rooms and sports bars. The rack-mountable scaler/switcher comes with seven inputs and accepts a variety of input formats including HDMI, Display Port, VGA and analog audio. An HDBaseT input allows video to be sent from a remote source via a transmitter or matrix. The VMS-741 combines switching with advanced scaling, allowing up to seven video sources to be switched to the HDMI output. In addition, the video output can be adjusted with different screen layouts for viewing up to four sources simultaneously on one display.

The VMS-741 offers control via RS-232, a web-based GUI and the front panel buttons for source selection and menu options.

Part #: 10-210665-21



Key Features

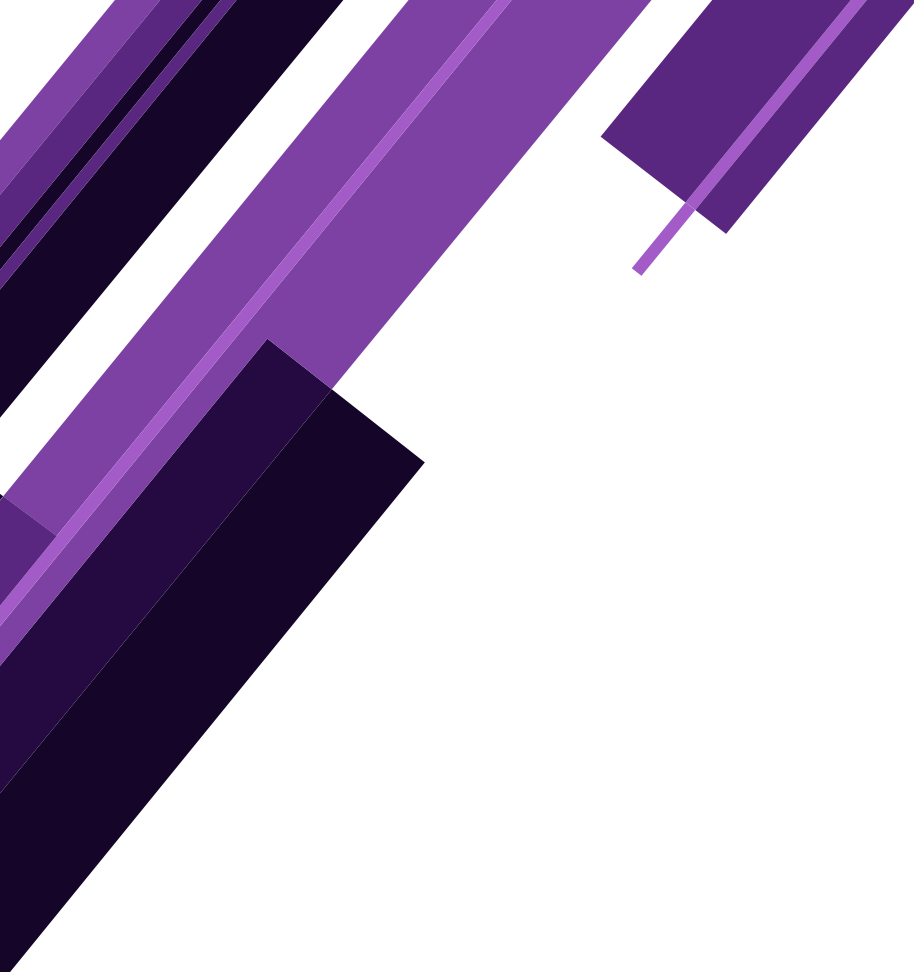
- Multiviewer function allows up to 4 sources to be viewed simultaneously
- Configurable video output screen layouts and Picture-in-Picture (PIP).
- Built-in scaler upscales input resolution up to 4K output resolution.
- Auto-switching, Quick Switch technology.
- Provides signal switching of up to 7 video sources.
- Video Inputs: 4 HDMI, 1 Display Port, 1 HDBaseT, 1 VGA
- Audio Input: Analog Audio, Digital Audio via HDMI / Display Port
- Video Output: 1 HDMI
- Audio Output: 7.1 Surround Sound
- Controllable via front control panel, RS-232 or web interface.

Installation Notes

- In the box: VMS-741, rack ears (2) with screws, power cord.

Specifications

AC Input Voltage.....	100VAC ~ 240VAC, 15 Watts
Mounting.....	Rack mount, 1 RU or free standing
Dimensions WxHxD.....	17.28" (439mm) x 1.73" (44mm) x 10.98" (279mm)
Weight	7.27lb (3.5kg)
Operating Temperature.....	C -10 to +40 degrees F +14 to +104 degrees
Operating Humidity.....	.5% to 95% Non-condensing
Digital Video Input	Four HDMI/MHL, One Display Port
HDBaseT Input	One RJ45
Analog Video Input	One VGA, female 15-pin (VGA, YPbPr, Composite Video)
Video Output.....	One HDMI
Output Resolution Range	Up to 4K@30Hz
Compliance.....	HDMI 1.4, HDCP 1.4
Audio Line Input.....	Seven, Analog Stereo (3.5mm jack)
Audio Input Impedance.....	20kOhms
Audio Output.....	7.1 Digital Surround Sound, TOSLINK
.....	4 x 3.5 mm Stereo Audio jack
Frequency Response	20Hz to 20KHz
Front Panel Control	17 Buttons for Input Select and Menu
RS-232	One, Bi-directional (9-pin D-sub connector)
Ethernet Port	One, 10/100Base-T (RJ45)
Warranty	Three Years (Parts & Labor)



Copyright ©2021
Remote Technologies Inc. USA
All rights reserved
Ver. 202105

www.rticorp.com | 5775 12 Avenue East, Suite 180 | Shakopee, MN | 952-253-3100