



Triad InWall LCR Speakers

TS-IWLCR4, TS-IWLCR5, TS-IWLCR6

Create immersive audio experiences in residential home theaters with Triad InWall LCR speakers as a left, center, or right audio solution.

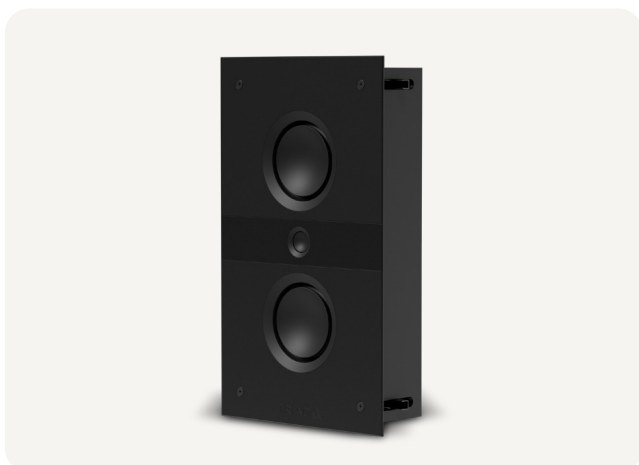


Engineered for Elite Audio Experiences

These meticulously designed speakers deliver crystal-clear sound with fast transient response. With durable, lightweight aluminum cone woofers and tweeters as well as drivers built from the ground up by the Triad team, Triad delivers phenomenal audio performance every time.

Flexible and Uncomplicated Installation Method

Make your installation easier and safer with the built-in, patent-pending spring dog system, which holds the speaker in a wall or a ceiling, freeing up your hands to screw in and install the speaker without worry. The spring dog can also be flipped to help avoid a stud or joist, allowing you to secure the speaker regardless of orientation.



Resonance-Free Solid MDF Cabinet

Fully engineered, premium MDF enclosures with internal bracing components are rigid and precision-crafted to break up acoustic standing waves. Triad speakers are built to order on-site in our Portland, OR manufacturing facility by a team of passionate craftspeople and audio experts for custom, high-quality construction.

Individual Product Specifications	TS-IWLCR4	TS-IWLCR5	TS-IWLCR6
Dimensions (W x H x D) (With Baffle Cover but No Grille)	14 3/4" x 8 7/16" x 4 1/16" 375mm x 214mm x 103mm	20 1/4" x 12" x 4 1/16" 514mm x 305mm x 103mm	27 1/4" x 14 3/4" x 4 1/16" 692mm x 375mm x 103mm
Dimensions (HxWxD) (With Grille)	15" x 8 11/16" x 4 1/16" 381mm x 220mm x 103mm	20 1/2" x 12 1/4" x 4 1/16" 520mm x 311mm x 103mm	27 1/2" x 15" x 4 1/16" 698mm x 381mm x 103mm
Weight (with Grille)	10.8lbs / 4.89kgs	18.5lbs / 8.43kgs	27lbs / 12.27kgs
Mounting Depth	3 15/16" / 100mm	3 15/16" / 100mm	3 15/16" / 100mm
Cutout Size (HxW)	13 5/8" x 7 5/16" 347mm x 186mm	19 1/8" x 10 7/8" 486mm x 277mm	26 1/8" x 13 5/8" 664mm x 347mm
Anechoic Frequency Response +/-3dB	75Hz-20kHz	65Hz-20kHz	55Hz-20kHz
Nominal Impedance (Ω)	6	6	6
Minimum Impedance (Ω)	5.18	5.82	5.91
Crossover Frequency (Hz)	2300	2100	2100
Crossover Type / Slope (dB/Oct.)	Linkwitz-Riley / 12 dB	Linkwitz-Riley / 12 dB	Linkwitz-Riley / 12 dB
Max RMS SPL (AES75/1m) (dB)	104.4	108.3	109
Peak SPL (AES75/1m/18dB Crest Factor) (dB)	122.4	126.3	127
Power Handling Peak (W)	280	360	400
Power Handling (RMS CTA-426B) (W)	140	180	200
Recommended Amplifier Power (W)	50 - 150	50 - 200	50 - 250
Sensitivity (dB) @ 2.83V/1m	85dB	86dB	87dB
Woofer Size	2 x 4"	2 x 5"	2 x 6"
Woofer Cone Material	Fiber Dampened Aluminum	Fiber Dampened Aluminum	Fiber Dampened Aluminum
Woofer Surround Material	Rubber	Rubber	Rubber
Woofer Voice Coil Diameter (mm)	26.45	33.5	36.71
Woofer Excursion (Peak to Peak) (mm):	6.2	6.2	8.2
Woofer Magnet Type	Ferrite	Ferrite	Ferrite
Tweeter Size	1"	1"	1"
Tweeter Material	Aluminum	Aluminum	Aluminum
Speaker Connector Type	Spring Terminals	Spring Terminals	Spring Terminals
Dog Clamping Range	3/8" / 9.5mm to 1.5" / 38mm	3/8" / 9.5mm to 1.5" / 38mm	3/8" / 9.5mm to 1.5" / 38mm
Compatible Replacement Grille	TS-GRL-J (preferred) or 006-1006	TS-GRL-C (preferred) or 006-0306	TS-GRL-P (preferred) or 006-1606
Compatible New Construction Bracket	TS-NCB-J or 003-0106	TS-NCB-C or 003-0102	TS-NCB-P or 003-0111
U of M (Sold as)	Each	Each	Each
Gift Box Specifications	TS-IWLCR4	TS-IWLCR5	TS-IWLCR6
U of M (Sold as)	Each	Each	Each
Gift Box Dimensions (LxWxD)	18 1/2" x 13 1/4" x 9 3/4" 470mm x 337mm x 248mm	24 1/4" x 16" x 10" 616mm x 407mm x 254mm	31 3/4" x 19" x 12 1/4" 807mm x 483mm x 312mm
Shipping Weight	13.8lbs / 6.26kgs	22.6lbs / 10.2kgs	34lbs / 15.5kgs