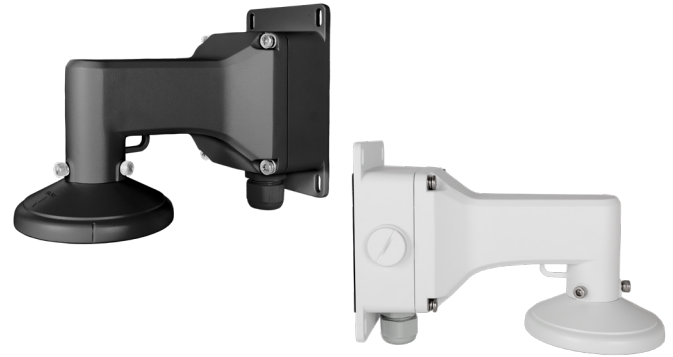


Summary

Combining the best features of a traditional wall mount bracket and a junction box, this accessory bracket is an excellent solution for securely installing Luma X20 cameras on internal and external walls while protecting the camera and internal cabling from weather elements such as rain, debris, and snow. The junction box provides ample space to conceal connections, is easy to install, and is available in white and black finishes to match Luma cameras. It is compatible only with Luma X20 fixed lens turret cameras.



Specifications

Product	LUM-WMBJB-VF-T-(W/B)
Operating Temperature	-40°F - 140°F (-40°C - 60°C)
Operating Humidity	10%~90%
Dimensions (W x H x D)	Φ 9.5" x 6.48" x 3.83" (Φ 243mm x 164.8mm x 97.3mm)
Weight	2.08 lbs (0.94 Kg)
Material	Aluminum alloy
Color	White/Black

Dimensions

Unit: mm

