



Triad InWall Passive Subwoofers

TS-IW-PAS10-4, TS-IW-PAS10-8, TS-IW-PAS12-4, TS-IW-PAS12-8, TS-IW-PAS10-4-RTS, TS-IW-PAS10-8-RTS, TS-IW-PAS12-4-RTS, TS-IW-PAS12-8-RTS

Deliver deep, resonant bass with Triad InWall Passive Subwoofers. These subwoofers deliver robust, controlled low frequencies to enhance any media experience. Built with custom-designed in-house drivers and sealed, braced enclosures, these subs ensure a high output with minimal distortion for crisp, immersive audio. Each unit is handcrafted to deliver premium sound quality, while the magnetic grilles, available in optional custom color, complements any decor. The Triad InWall Passive Subwoofers were designed in tandem with our Triad Subwoofer RackAmps to deliver maximum power while maintaining efficiency.



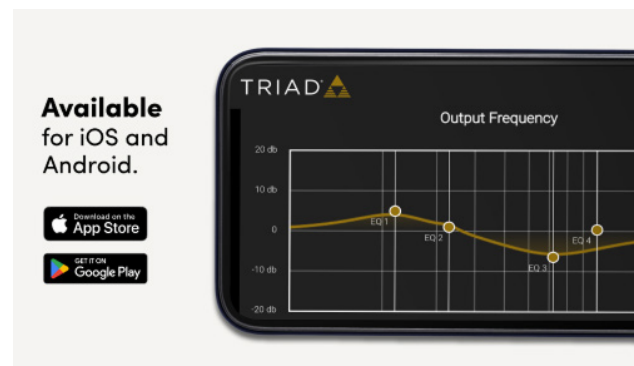
High Output Aluminum Cone Driver

The Triad Passive Subwoofer's aluminum cone offers superior rigidity, reducing distortion and delivering more accurate bass. Its lightweight design offers faster response and improved transient performance, along with excellent heat dissipation to prevent overheating. Additionally, its durability makes it resistant to environmental factors such as moisture and temperature fluctuations, ensuring long-lasting, consistent performance.



Resonance-Free Solid MDF Cabinet

Fully engineered, premium MDF enclosures with internal bracing components are rigid and precision-crafted to break up acoustic standing waves, delivering clearer, more accurate sound. Triad speakers are built to order on-site in our Portland, OR, manufacturing facility by a team of passionate craftspeople and audio experts for custom, high-quality construction.

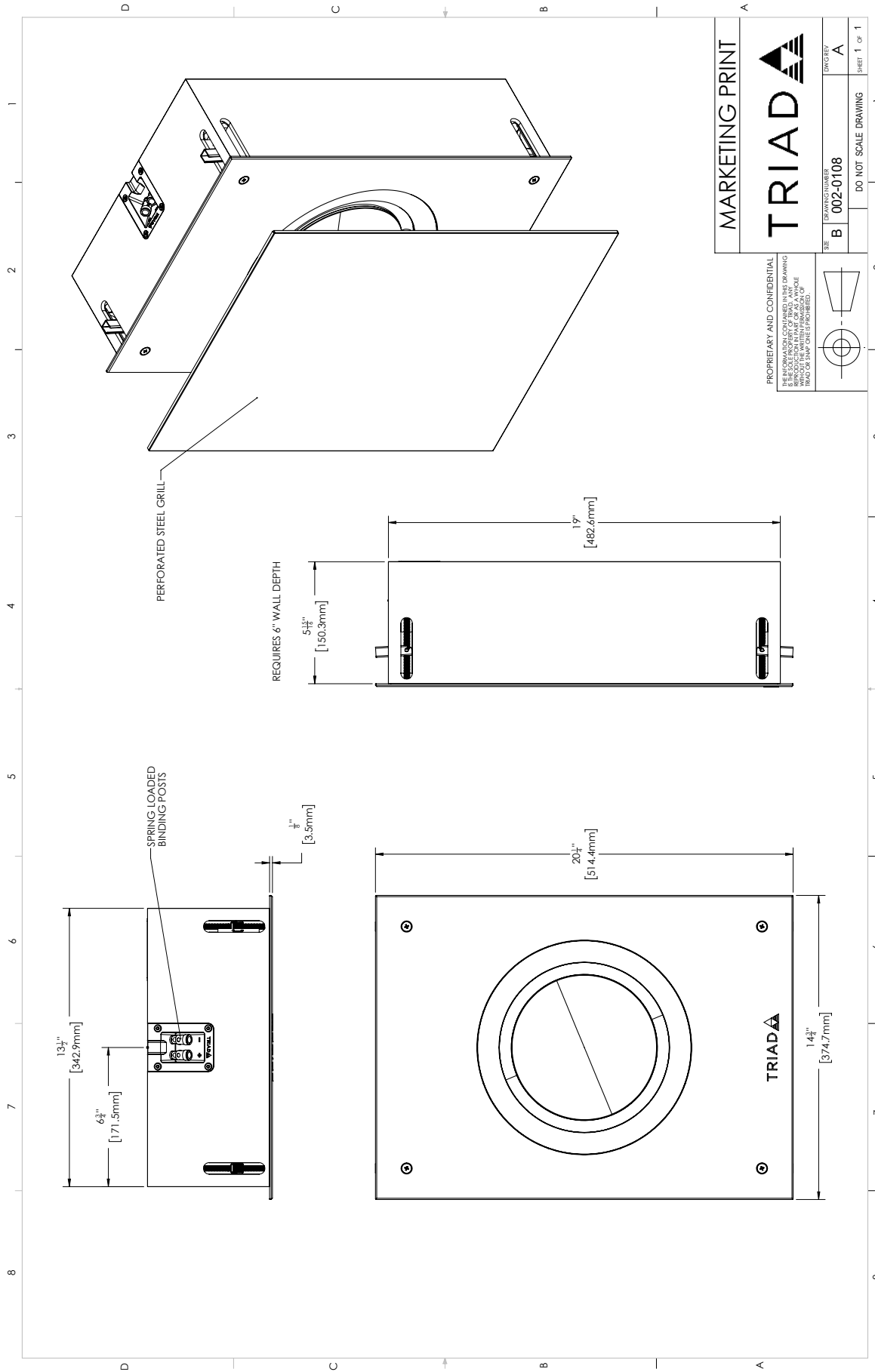


Flexible Setup Options

Seamlessly pair with Triad Subwoofer Rackmount Amplifiers to configure the subwoofer from the palm of your hand with the Tune-It app (Coming Soon). You can configure it when the amplifier is on the network using the Web UI, or, if it's not connected to the internet, via a direct PC-to-amp connection.

General	TS-IW-PAS10-4	TS-IW-PAS10-8	TS-IW-PAS12-4	TS-IW-PAS12-8
U of M (Sold as)	Each	Each	Each	Each
Speaker Connector Type	Spring Terminals	Spring Terminals	Spring Terminals	Spring Terminals
Nominal Impedance	4	8	4	8
Minimum Impedance	4.4	8.0	4.2	9.2
Frequency Response (-3dB) (W/Triad tuning)	27 - 300	29 - 300	19 - 300	19 - 300
-6dB LF (W/ Triad tuning)	22	24	17	17
Sensitivity (dB) @ 2.83V/1m	88	85	88	85
Max RMS SPL (AES75/1m)	108.7	109.2	113.8	113.1
Peak SPL (AES75/1m/18dB Crest Factor)	126.7	127.2	131.8	131.1
Power Handling RMS	300	300	700	700
Power Handling Peak	600	600	1400	1400
Woofers Size	10"	10"	12"	12"
Woofers Cone Material	Fiber Dampened Aluminum	Fiber Dampened Aluminum	Fiber Dampened Aluminum	Fiber Dampened Aluminum
Woofers Surround Material	Rubber	Rubber	Rubber	Rubber
Woofers Magnet Type	Ferrite	Ferrite	Ferrite	Ferrite
Woofers Voice Coil Diameter	50	50	64	64
Woofers Excursion (Peak to Peak):	9	8.8	12	12
Cutout Size (HxW) (inches)	13 5/8" x 19 1/8"	13 5/8" x 19 1/8"	13 5/8" x 26 1/8"	13 5/8" x 26 1/8"
Cutout Size (HxW) (mm)	347 x 486	347 x 486	347 x 664	347 x 664
Mounting Depth (Inches)	5 15/16"	5 15/16"	11.5"	11.5"
Mounting Depth (mm)	150	150	293	293
Dog Clamping Range (inches)	1.5	1.5	1.5	1.5
Dog Clamping Range (mm)	38	38	38	38
Dimensions (HxWxD) (With Baffle Cover but No Grille) (Inches)	14 3/4" x 20 1/4" x 5 15/16"	14 3/4" x 20 1/4" x 5 15/16"	14 3/4" x 27 1/4" x 11.5"	14 3/4" x 27 1/4" x 11.5"
Dimensions (HxWxD) (With Baffle Cover but No Grille) (mm)	375 x 515 x 150	375 x 515 x 150	375 x 693 x 293	375 x 693 x 293
Dimensions (HxWxD) (With Grille) (inches)	14 7/8" x 20 3/8" x 5 15/16"	14 7/8" x 20 3/8" x 5 15/16"	14 7/8" x 27 3/8" x 11.5"	14 7/8" x 27 3/8" x 11.5"
Dimensions (HxWxD) (With Grille) (mm)	378 x 518 x 150	378 x 518 x 150	378 x 696 x 293	378 x 696 x 293
Weight (with Grille) (lbs)	26.5	26.5	56.5	56.5
Weight (with Grille) (kg)	12.04	12.04	25.70	25.70
Compatible Replacement Grille	TS-GRL-SUB-V	TS-GRL-SUB-V	TS-GRL-SUB-P	TS-GRL-SUB-P
Compatible New Construction Bracket	TS-NCB-V	TS-NCB-V	TS-NCB-P	TS-NCB-P

Gift Box Specifications	TS-IW-PAS10-4	TS-IW-PAS10-8	TS-IW-PAS12-4	TS-IW-PAS12-8
U of M (Sold as)	Each	Each	Each	Each
Gift Box Dimensions (LxWxH) (inches)	25" x 18 3/4" x 12"	25" x 18 3/4" x 12"	31 1/2" x 18 3/4" x 18 1/8"	31 1/2" x 18 3/4" x 18 1/8"
Gift Box Dimensions (LxWxH) (mm)	635 x 477 x 305	635 x 477 x 305	800 x 477 x 461	800 x 477 x 461
Shipping Weight (lbs)	31.1	31.1	66.8	66.8
Shipping Weight (kg)	14.10	14.10	30.30	30.30



MARKETING PRINT

TRIAD

PROPRIETARY AND CONFIDENTIAL
 THIS DRAWING IS THE PROPERTY OF TRIAD. ANY
 REPRODUCTION OR TRANSMISSION OF THIS DRAWING
 WITHOUT THE WRITTEN PERMISSION OF
 TRIAD OR EMPLOYEES IS PROHIBITED.

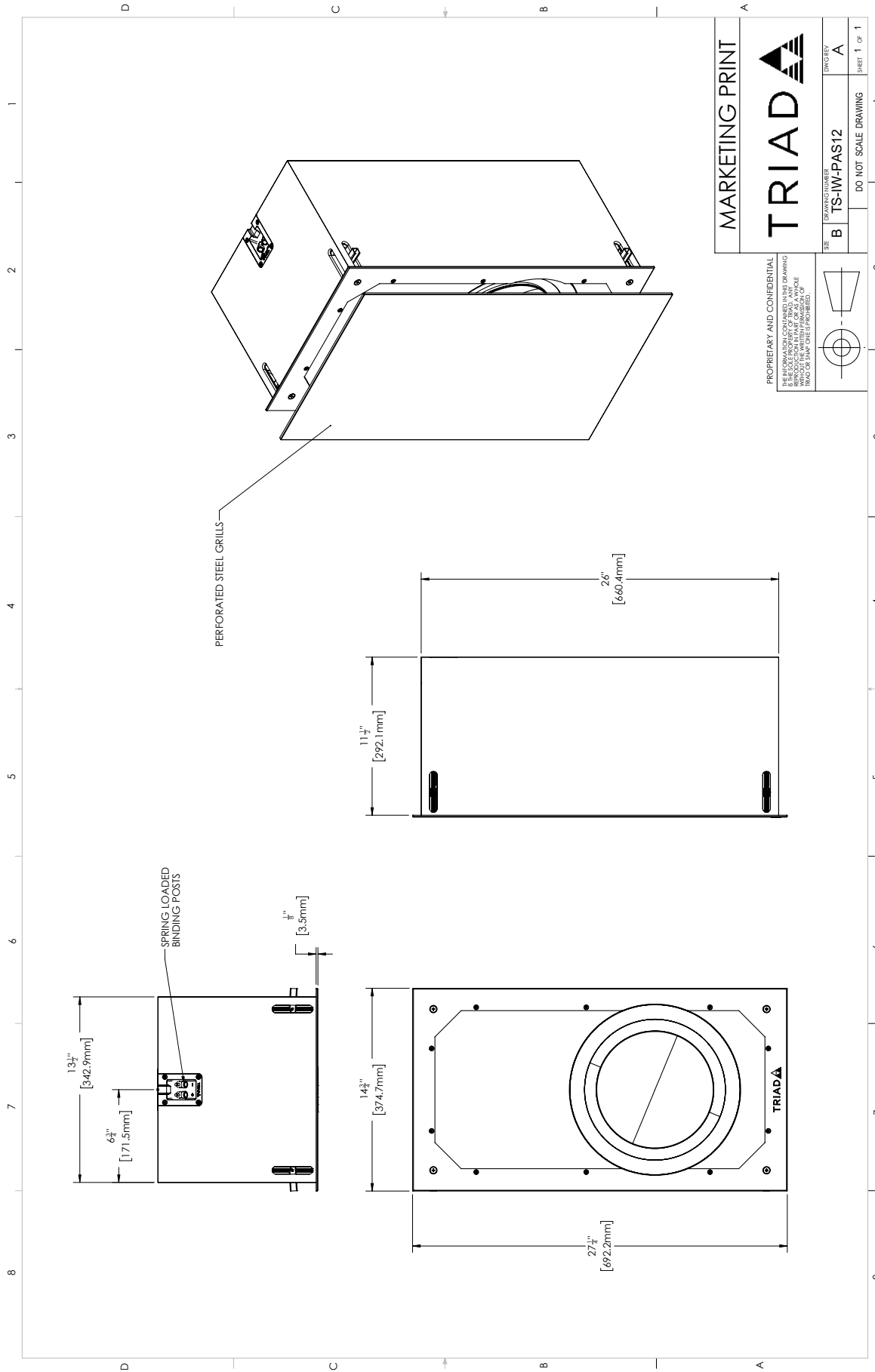
SIZE B DRAWING NUMBER 002-0108

DO NOT SCALE DRAWING

CONCRETE

A

SHEET 1 OF 1



MARKETING PRINT

TRIAD

DRAWING NUMBER
TS-1W-PAS12

SIZE
B

DRAWING NUMBER
A

DO NOT SCALE DRAWING
SHEET 1 OF 1

PROPRIETARY AND CONFIDENTIAL
THIS DRAWING IS THE PROPERTY OF TRIAD. ANY
REPRODUCTION OR TRANSMISSION OF THIS DRAWING
WITHOUT THE WRITTEN PERMISSION OF
TRIAD OR EMPLOYEES IS PROHIBITED.



Triad InCeiling Passive Subwoofers

TS-IC-PAS8-4, TS-IC-PAS8-8, TS-IC-PAS10-4, TS-IC-PAS10-8, TS-IC-PAS8-4-RTS, TS-IC-PAS8-8-RTS, TS-IC-PAS10-4-RTS, TS-IC-PAS10-8-RTS

Deliver deep, resonant bass with Triad InCeiling Passive Subwoofers. These subwoofers deliver robust, controlled low frequencies to enhance any media experience. Built with custom-designed in-house drivers and sealed, braced enclosures, these subs ensure a high output with minimal distortion for crisp, immersive audio. Each unit is handcrafted to deliver premium sound quality, while the magnetic grilles, available in optional custom color, complements any decor. The Triad InCeiling Passive Subwoofers were designed in tandem with our Triad Subwoofer RackAmps to deliver maximum power while keeping efficiency in mind.



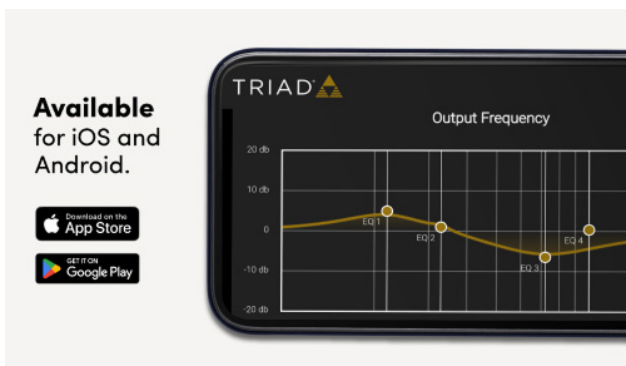
High Output Aluminum Cone Driver

The Triad Passive Subwoofer's aluminum cone offers superior rigidity, reducing distortion and delivering more accurate bass. Its lightweight design offers faster response and improved transient performance, along with excellent heat dissipation to prevent overheating. Additionally, its durability makes it resistant to environmental factors such as moisture and temperature fluctuations, ensuring long-lasting, consistent performance.



Resonance-Free Solid MDF Cabinet

Fully engineered, premium MDF enclosures with internal bracing components are rigid and precision-crafted to break up acoustic standing waves, delivering clearer, more accurate sound. Triad speakers are built to order on-site in our Portland, OR, manufacturing facility by a team of passionate craftspeople and audio experts for custom, high-quality construction.

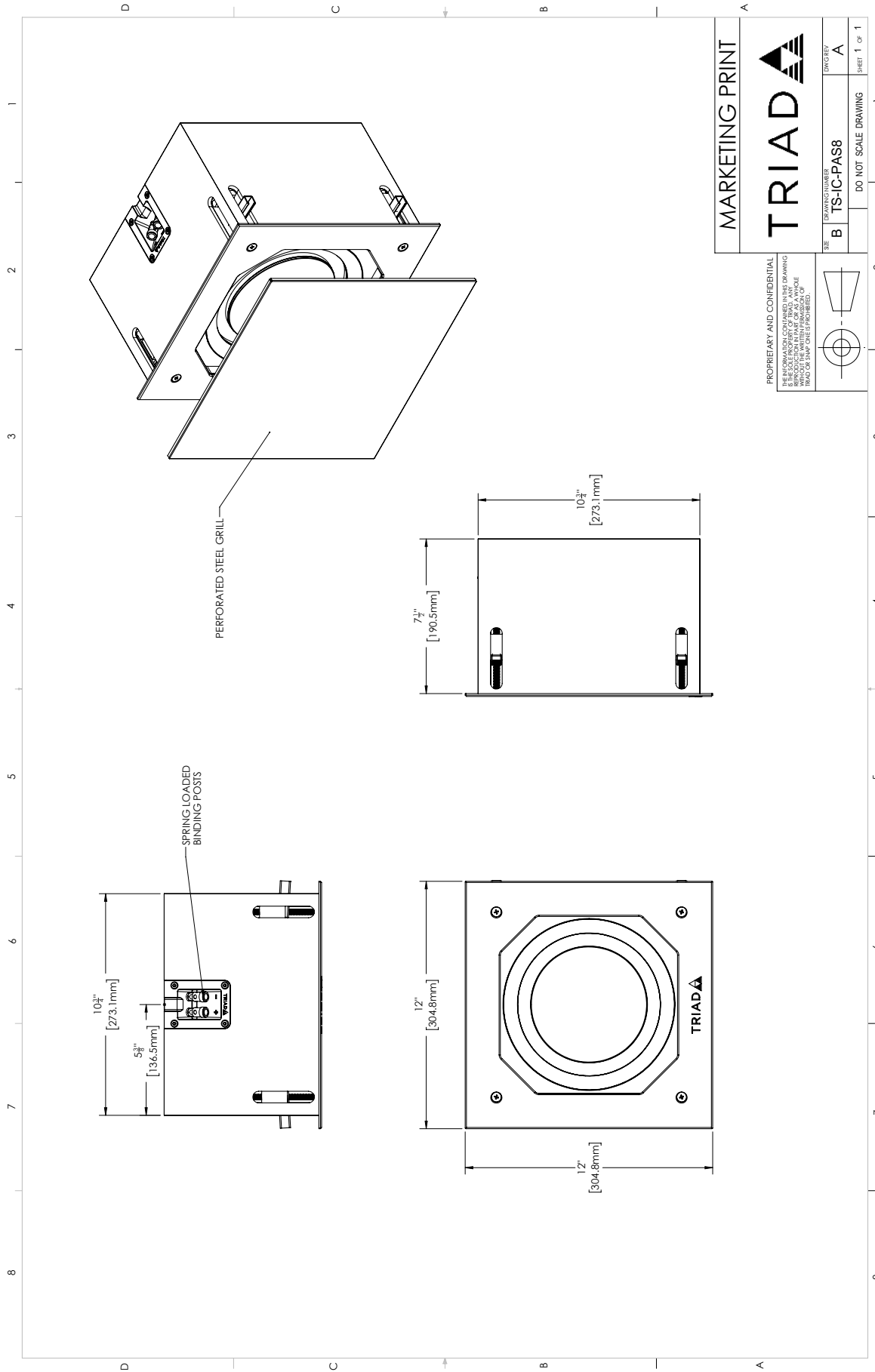


Flexible Setup Options

Seamlessly pair with Triad Subwoofer Rackmount Amplifiers to configure the subwoofer from the palm of your hand with the Tune-It app (Coming Soon). You can configure it when the amplifier is on the network using the Web UI, or, if it's not connected to the internet, via a direct PC-to-amp connection.

General	TS-IC-PAS8-4	TS-IC-PAS8-8	TS-IC-PAS10-4	TS-IC-PAS10-8
U of M (Sold as)	Each	Each	Each	Each
Speaker Connector Type	Spring Terminals	Spring Terminals	Spring Terminals	Spring Terminals
Nominal Impedance	4	8	4	8
Minimum Impedance	4.8	8.8	4.5	8.0
Frequency Response (-3dB) (W/Triad tuning)	31 - 300	32 - 300	28 - 300	28 - 300
-6dB LF (W/ Triad tuning)	25	27	24	24
Sensitivity (dB) @ 2.83V/1m	84	81	88	86
Max RMS SPL (AES75/1m)	105.8	106.6	108.5	109.0
Peak SPL (AES75/1m/18dB Crest Factor)	123.8	124.6	126.5	127.0
Power Handling RMS	300	300	300	300
Power Handling Peak	600	600	600	600
Woofers Size	8"	8"	10"	10"
Woofers Cone Material	Fiber Dampened Aluminum	Fiber Dampened Aluminum	Fiber Dampened Aluminum	Fiber Dampened Aluminum
Woofers Surround Material	Rubber	Rubber	Rubber	Rubber
Woofers Magnet Type	Ferrite	Ferrite	Ferrite	Ferrite
Woofers Voice Coil Diameter	50.5	50.5	50	50
Woofers Excursion (Peak to Peak):	9	9	9	8.8
Cutout Size (HxW) (inches)	10 7/8" x 10 7/8"	10 7/8" x 10 7/8"	13 5/8" x 13 5/8"	13 5/8" x 13 5/8"
Cutout Size (HxW) (mm)	277 x 277	277 x 277	347 x 347	347 x 347
Mounting Depth (Inches)	7.5"	7.5"	9"	9"
Mounting Depth (mm)	191	191	229	229
Dog Clamping Range (inches)	1.5	1.5	1.5	1.5
Dog Clamping Range (mm)	38	38	38	38
Dimensions (HxWxD) (With Baffle Cover but No Grille) (Inches)	12" x 12" x 7.5"	12" x 12" x 7.5"	14 3/4" x 14 3/4" x 9"	14 3/4" x 14 3/4" x 9"
Dimensions (HxWxD) (With Baffle Cover but No Grille) (mm)	305 x 305 x 191	305 x 305 x 191	375 x 375 x 229	375 x 375 x 229
Dimensions (HxWxD) (With Grille) (inches)	12 1/8" x 12 1/8" x 7.5"	12 1/8" x 12 1/8" x 7.5"	14 7/8" x 14 7/8" x 9"	14 7/8" x 14 7/8" x 9"
Dimensions (HxWxD) (With Grille) (mm)	308 x 308 x 191	308 x 308 x 191	378 x 378 x 229	378 x 378 x 229
Weight (with Grille) (lbs)	22.0	22.0	25.5	25.5
Weight (with Grille) (kg)	9.98	9.98	11.57	11.57
Compatible Replacement Grille	TS-GRL-S	TS-GRL-S	TS-GRL-SUB-G	TS-GRL-SUB-G
Compatible New Construction Bracket	TS-NCB-S	TS-NCB-S	TS-NCB-G	TS-NCB-G

Gift Box Specifications	TS-IC-PAS8-4	TS-IC-PAS8-8	TS-IC-PAS10-4	TS-IC-PAS10-8
U of M (Sold as)	Each	Each	Each	Each
Gift Box Dimensions (LxWxH) (inches)	16 1/4" x 16 1/4" x 14 1/4"	16 1/4" x 16 1/4" x 14 1/4"	19" x 19" x 16"	19" x 19" x 16"
Gift Box Dimensions (LxWxH) (mm)	413 x 413 x 362	413 x 413 x 362	483 x 483 x 407	483 x 483 x 407
Shipping Weight (lbs)	26.0	26.0	30.0	30.0
Shipping Weight (kg)	11.80	11.80	13.60	13.60



MARKETING PRINT

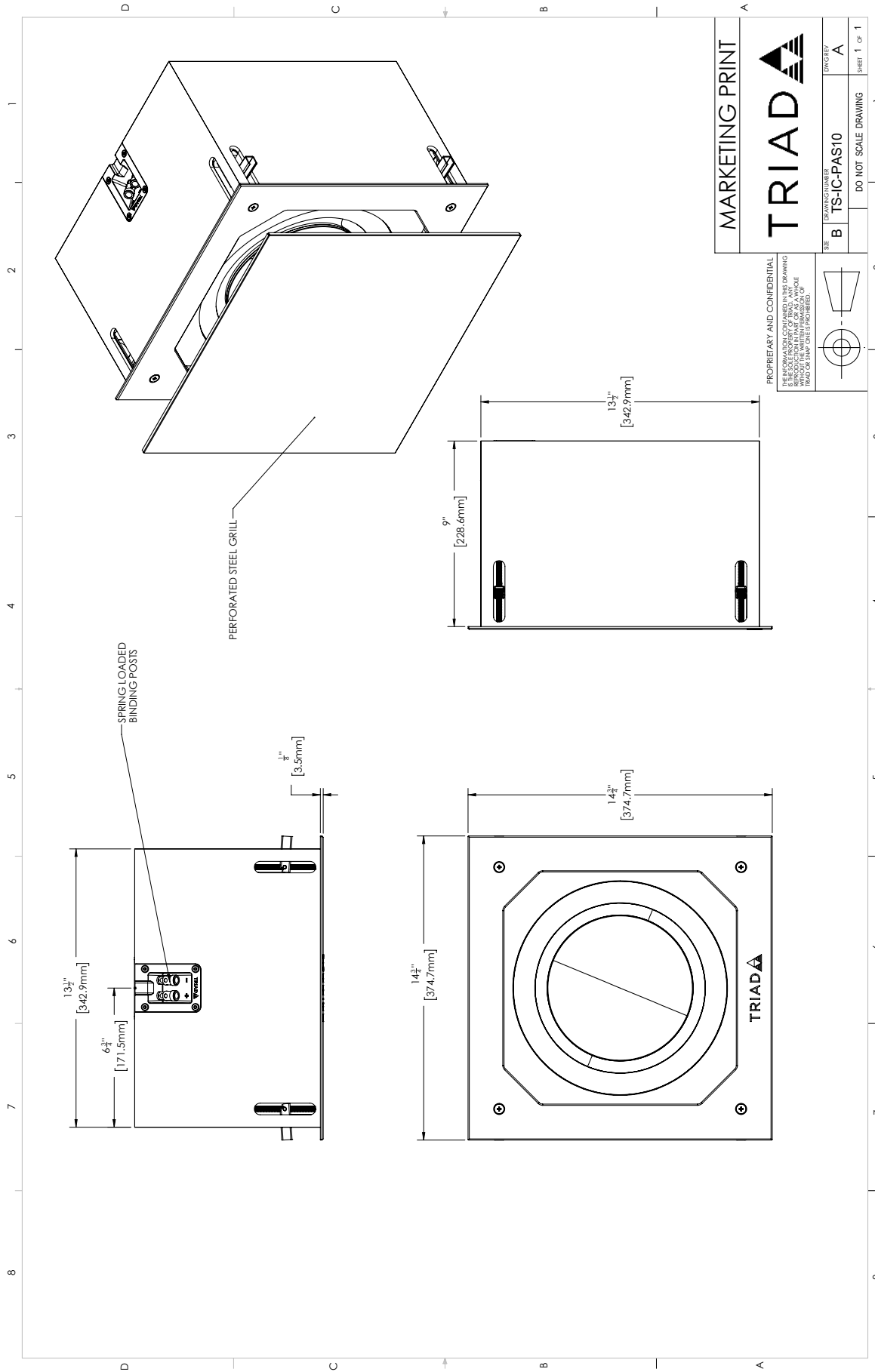
TRIAD

SIZE: B DRAWING NUMBER: TS-IC-PAS8 DWG REV: A

DO NOT SCALE DRAWING

SHEET 1 OF 1

PROPRIETARY AND CONFIDENTIAL
 THIS DRAWING IS THE PROPERTY OF TRIAD. ANY
 REPRODUCTION OR TRANSMISSION OF THIS DRAWING
 WITHOUT THE WRITTEN PERMISSION OF
 TRIAD OR EMPLOYEES IS PROHIBITED.



MARKETING PRINT

TRIAD

PROPRIETARY AND CONFIDENTIAL
 THIS DRAWING IS THE PROPERTY OF TRIAD. ANY
 REPRODUCTION OR TRANSMISSION OF THIS DRAWING
 WITHOUT THE WRITTEN PERMISSION OF
 TRIAD OR EMPLOYEES IS PROHIBITED.

SIZE: B DRAWING NUMBER: TS-IC-PAS10 DWG. REV: A

DO NOT SCALE DRAWING

SHEET 1 OF 1