

MSpeaker II

Introduction

Yealink MSpeaker II is specially designed for video conferencing room, to award you a better sound in a meeting room. It has two built-in speakers, providing powerful output to cover middle even large meeting room. Working with Yealink microphone and Yealink Noise Proof Technology, it brings a crystal and vivid audio experience to everyone.

MSpeaker II supports PoE, which enables simple and easy deployment, in this way, power supply, audio data transmission and signal control unifies as one, sharply reducing the complex installation procedures as well as the costly expenses. And MSpeaker II also supports 3.5mm AUX input to be compatible with more video conferencing solution.



Specification

| Parameter | Description |
|------------------|--|
| Audio Output | <ul style="list-style-type: none">• Stereo speakers• Frequency respond: 100Hz-20KHz• S/N: ≥ 70dB• RMS: 10W• 87db @ 1m |
| Audio Input | <ul style="list-style-type: none">• 1 x VCH (RJ45), supports PoE (802.3af)• 1 x 3.5mm Line-in |
| Other Interfaces | <ul style="list-style-type: none">• Built-in Bluetooth (for future use)• Power Input:<ul style="list-style-type: none">- DC 48V/0.7A- PSE 54V \approx0.56A or PoE 48V \approx0.27A |

| | |
|-------------------|---|
| Physical Features | <ul style="list-style-type: none"> · Dimension (W.D.H): 500 mm x 60 mm x 86 mm · Operating humidity: 5 - 90% · Operating temperature: 0 - 40°C |
| Package Content | <ul style="list-style-type: none"> · MSpeaker II · Power Adapter · 3 m audio cable (3.5 mm) · Wall Mount Bracket · Quick Start Guide |

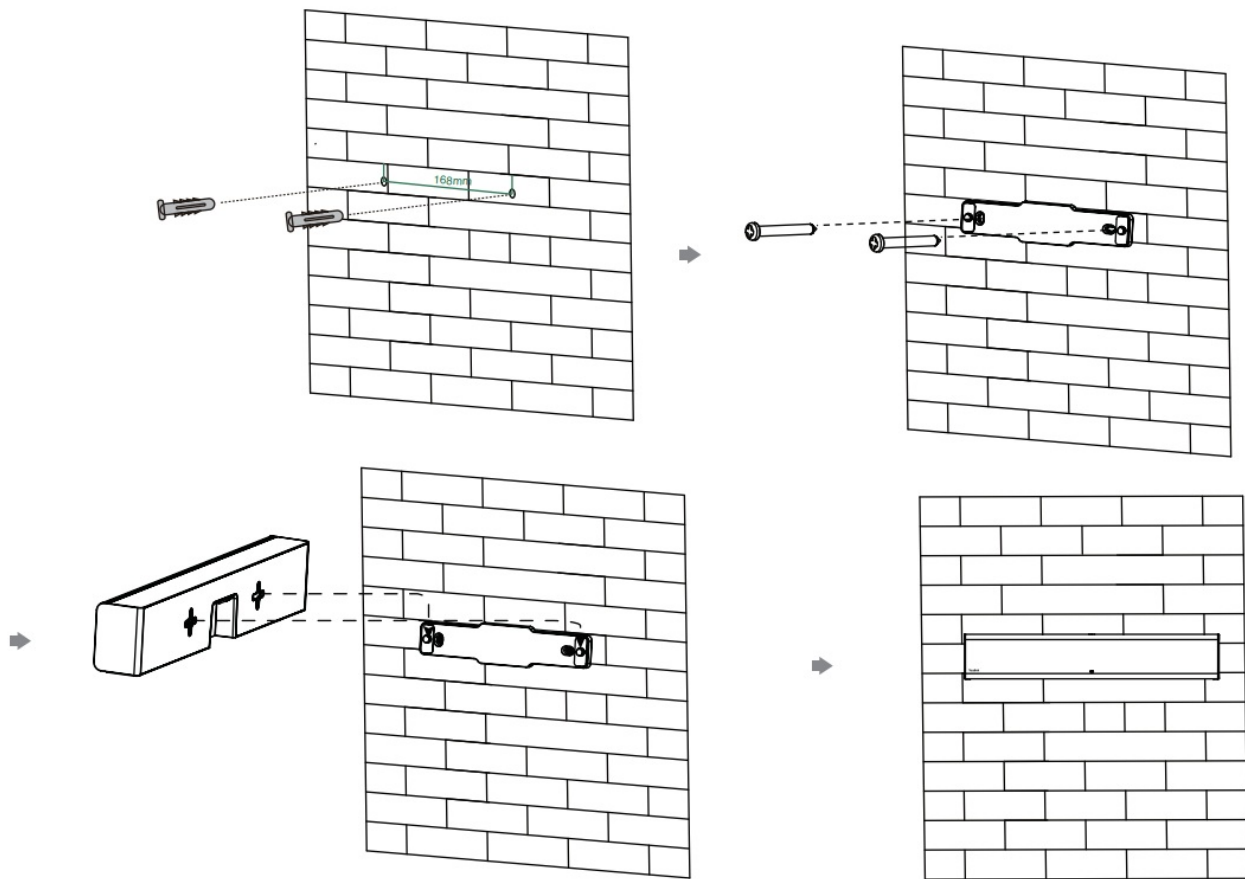
Device Compatibility

The maximum number of MSpeaker II microphones supported by the conferencing room endpoint is as follows:

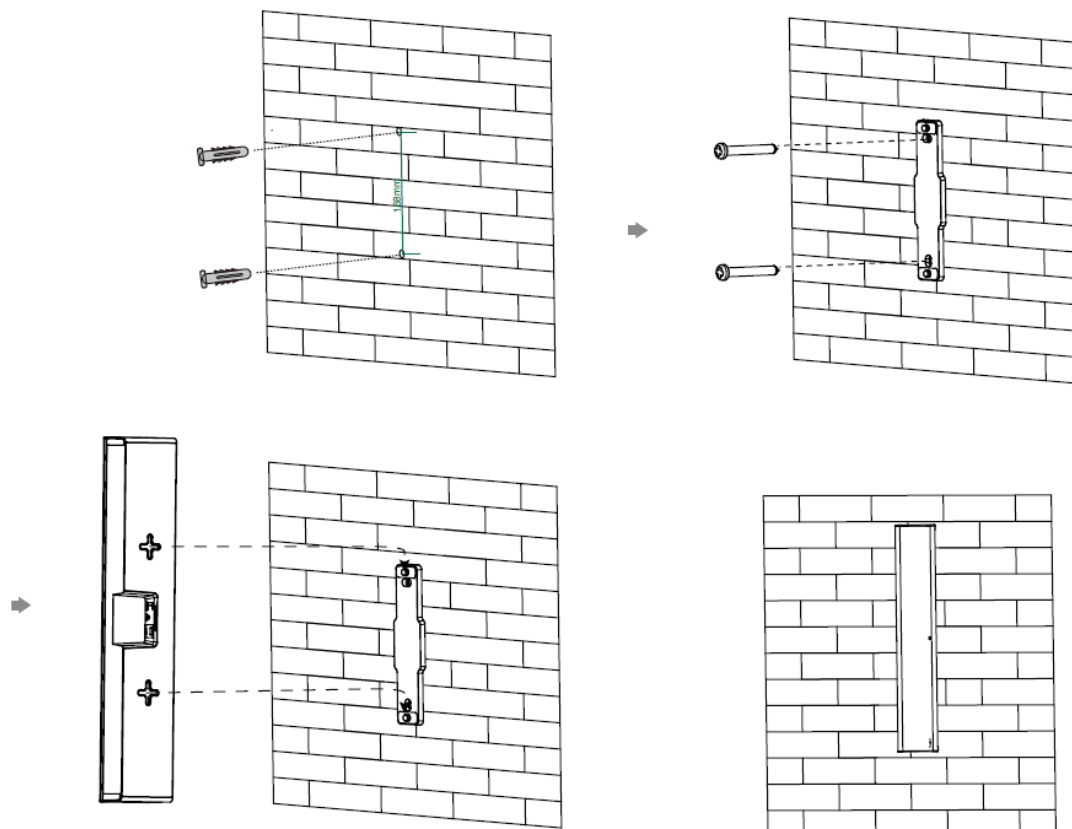
| Device Name | Max. number of MSpeaker II supported |
|--|---|
| MeetingBar A10, MeetingBar A20, MeetingBar A30, MeetingBar A40 | × |
| MVC960, MVC940, MVC900 | Support pairing/using up to 4 at a time |
| MVC860-BASE KIT, MVC860, MVC840-BASE KIT, MVC840, ZVC840, ZVC860 | Support pairing/using up to 4 at a time |
| MVC640-Wireless | Support pairing/using up to 4 at a time |
| MVC660, MVC640-AI | × |
| MVC400, ZVC400 | × |
| MVC320 | × |
| MeetingBoard 65, MeetingBoard 86 | × |
| DeskVision A24 | × |
| MeetingEye 500, MeetingEye 500 Pro, MeetingEye 900 | <p>When connected to the VCH port, support pairing/using up to 4</p> <p>When connected to the Line out port, there is no limitation on the number</p> |

Installation

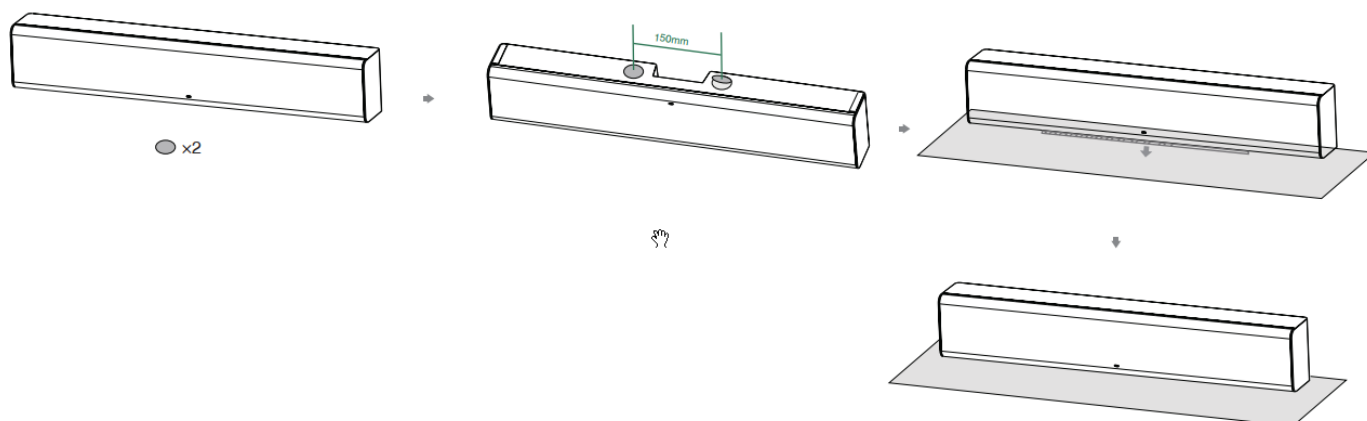
- **Mount Horizontally on the Wall**



- **Mount Vertically on the Wall**



- **Stick to the Table**



How to Use

MSpeaker II has different features when worked with different video conferencing endpoints. For more information, please refer to the corresponding documents.

Teams Version:

- Connect the MSpeaker II to MVC System: [MSpeaker II Soundbar](#)

Zoom Version:

- Connect the MSpeaker II to ZVC System: [MSpeaker II Soundbar](#)
- Connect the MSpeaker II to MeetingEye: [MSpeaker II Soundbar](#)

LED Indicator

| LED Status | Description |
|---|--|
| Off | The device is power off. |
| Solid green | The device is active. |
| Fast flashing green | The device is pairing Bluetooth. |
| Slowly flashing green | The device connects to Bluetooth successfully. |
| Red and green flashing alternately for 2s | The device is in initialling. |