

**Partner: SunBriteTV**  
**Model: IP**



## GENERAL INFORMATION

|                                    |  |
|------------------------------------|--|
| <b>SIMPLWINDOWS NAME:</b>          | SunBriteTV IP Demo                       |
| <b>CATEGORY:</b>                   | TV                                       |
| <b>VERSION:</b>                    | 1.4                                      |
| <b>SUMMARY:</b>                    | This module controls a SunBriteTV via IP |
| <b>GENERAL NOTES:</b>              |  |
| <b>CRESTRON HARDWARE REQUIRED:</b> | 3 Series processor is required.          |
| <b>SETUP OF CRESTRON HARDWARE:</b> |  |
| <b>VENDOR FIRMWARE:</b>            |  |
| <b>VENDOR SETUP:</b>               | None                                     |
| <b>CABLE DIAGRAM:</b>              | None                                     |

## CONTROL:

|                       |   |   |
|-----------------------|---|---|
| <b>AIR</b>            | D | Press AIR button  |
| <b>ASPECT</b>         | D | Press Aspect button   |
| <b>AUDIO MODE 1</b>   | D | Press audio mode 1 button   |
| <b>AUDIO MODE 2</b>   | D | Press audio mode 2 button   |
| <b>AUDIO MODE 3</b>   | D | Press audio mode 3 button   |
| <b>CABLE</b>          | D | Press cable button  |
| <b>CC</b>             | D | Press cc button   |
| <b>CHANNEL_RETURN</b> | D | Press channel return button   |
| <b>CHAN_DOWN</b>      | D | Press channel down button   |
| <b>CHAN_UP</b>        | D | Press channel up button   |
| <b>CONNECT</b>        | D | Set high to enable the driver, set low to disable the driver. Must be done at initialization of the module. |
| <b>DASH</b>           | D | Press dash button   |
| <b>DOWN_ARROW</b>     | D | Press down arrow  |
| <b>ENTER</b>          | D | Press enter button  |

**Partner: SunBriteTV**  
**Model: IP**



|                        |   |                              |
|------------------------|---|------------------------------|
| <b>FREEZE</b>          | D | Press freeze button          |
| <b>INPUT_COMPONENT</b> | D | Press input component button |
| <b>INPUT_HDMI</b>      | D | Press input hdmi button      |
| <b>INPUT_HDMI2</b>     | D | Press input hdmi 2 button    |
| <b>INPUT_HDMI3</b>     | D | Press input hdmi 3 button    |
| <b>INPUT_PC</b>        | D | Press input pc button        |
| <b>INPUT_TV</b>        | D | Press input tv button        |
| <b>INPUT_USB</b>       | D | Press input usb button       |
| <b>INPUT_VIDEO</b>     | D | Press input video button     |
| <b>INFO</b>            | D | Press info button            |
| <b>LEFT_ARROW</b>      | D | Press left arrow button      |
| <b>MENU</b>            | D | Press menu button            |
| <b>MUTE_OFF</b>        | D | Press mute off button        |
| <b>MUTE_ON</b>         | D | Press mute on button         |
| <b>MUTE_TOGGLE</b>     | D | Press mute toggle button     |
| <b>NUM0</b>            | D | Press number 0 button        |
| <b>NUM1</b>            | D | Press number 1 button        |
| <b>NUM2</b>            | D | Press number 2 button        |
| <b>NUM3</b>            | D | Press number 3 button        |
| <b>NUM4</b>            | D | Press number 4 button        |
| <b>NUM5</b>            | D | Press number 5 button        |
| <b>NUM6</b>            | D | Press number 6 button        |
| <b>NUM7</b>            | D | Press number 7 button        |
| <b>NUM8</b>            | D | Press number 8 button        |
| <b>NUM9</b>            | D | Press number 9 button        |
| <b>PICTURE_MODE_1</b>  | D | Press picture mode 1 button  |

**Partner: SunBriteTV**  
**Model: IP**



|                      |  |
|----------------------|--|
| PICTURE_MODE_2       | D Press picture mode 2 button                |
| PICTURE_MODE_3       | D Press picture mode 3 button                |
| PICTURE_MODE_4       | D Press picture mode 4 button                |
| PICTURE_MODE_5       | D Press picture mode 5 button                |
| PICTURE_MODE_6       | D Press picture mode 6 button                |
| PICTURE_MODE_7       | D Press picture mode 7 button                |
| POWER_ON             | D Press power on button                      |
| POWER_OFF            | D Press power off button                     |
| POWER_TOGGLE         | D Press power toggle button                  |
| RIGHT_ARROW          | D Press right arrow button                   |
| SLEEP_120            | D Press sleep 120 button                     |
| SLEEP_30             | D Press sleep 30 button                      |
| SLEEP_60             | D Press sleep 60 button                      |
| SLEEP_90             | D Press sleep 90 button                      |
| SLEEP_OFF            | D Press sleep off button                     |
| SOURCE_TOGGLE        | D Press source toggle button                 |
| TV_SPEAKERS_OFF      | D Press tv speakers off button               |
| TV_SPEAKERS_ON       | D Press tv speakers on button                |
| UP_ARROW             | D Press up arrow button                      |
| VIDEO_AUDIO_MUTE_OFF | D Press video audio mute off button          |
| VIDEO_AUDIO_MUTE_ON  | D Press video audio mute on button           |
| VIDEO_MUTE_OFF       | D Press video mute off button                |
| VIDEO_MUTE_ON        | D Press video mute on button                 |
| VOL_DOWN             | D Press volume down button                   |
| VOL_UP               | D Press volume up button                     |
| GET_SOFTWARE_VERSION | D Press to query device for software version |

**Partner: SunBriteTV**  
**Model: IP**



|                   |   |  |
|-------------------|---|--|
| GET_SERIAL_NUMBER | D | Press to query device for serial number        |
| GET_VOLUME_LEVEL  | D | Press to query device for current volume level |
| GET_POWER_STATUS  | D | Press to query device for current power status |

## FEEDBACK:

|                      |   |  |
|----------------------|---|--|
| SERIAL_NUMBER        | S | Text serial number                                   |
| POWERED_ON           | D | Set to high when powered on and low when powered off |
| SOFTWARE_VERSION     | S | Text software version                                |
| CURRENT_VOLUME_LEVEL | A | Reflects current volume level                        |

## PARAMETER:

|             |   |  |
|-------------|---|--|
| device_ip\$ | S | IP address of device                                 |
| Username\$  | S | Username of device if using newer model sunbritetvs  |
| Password\$  | S | Password of device if using newer model sunbritetvs. |

## TESTING:

|                                  |   |
|----------------------------------|---|
| OPS USED FOR TESTING:            | RMC3 1.010.0060   |
| SIMPL WINDOWS USED FOR TESTING:  | 4.02.65   |
| DEVICE DB USED FOR TESTING:      | 65.05.003.00  |
| CRES DB USED FOR TESTING:        | 51.05.007.00  |
| SYMBOL LIBRARY USED FOR TESTING: | 944   |
| SAMPLE PROGRAM:                  | SunBriteTV IP Demo  |
| REVISION HISTORY:                | <div>V1.4<br/>Updated documentation<br/>Added signals for fetching current status<br/>Added delay to sequential commands<br/>Added volume level query after setting discrete volume</div> <div>V1.3<br/>Updated documentation<br/>Added delay to initialization</div> |

**Partner: SunBriteTV**  
**Model: IP**



Corrected login logic from partner driver modifications  
Added power and volume queries on initialization

V1.2  
Added support for veranda 2

V1.1

V1.0  
Original Release

## Crestron Basic Setup – SunBrite Signature 2 / Pro 2 IP control

SKU's supported

SB-S2-43-4K-BL

SB-S2-55-4K-BL

SB-S2-65-4K-BL

SB-S2-75-4K-BL

SB-SE-43-4K-BL (2<sup>ND</sup> EDITION)

SB-P2-32-1K-BL

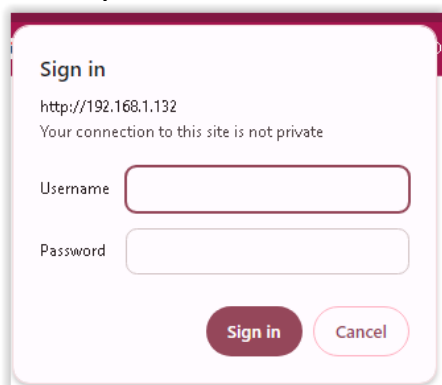
SB-P2-43-1K-BL

SB-P2-49-4K-BL

SB-P2-55-4K-BL

SB-P2-65-4K-BL

TV setup:



Sign in

http://192.168.1.132  
Your connection to this site is not private

Username

Password

**Partner: SunBriteTV**  
**Model: IP**



You must change the default login credentials before continuing!

Username:   
Password:   
Confirm Password:

You must change the default login credentials before continuing!

Username:   
Password:   
Confirm Password:

## SunBrite TV



[DETAILS](#) [CONFIGURE](#) [SYSTEM LOG](#)

### System Settings

| SYSTEM NAME       | MODEL          | SERVICE TAG      | MAC ADDRESS       | IP ADDRESS    | FIRMWARE VERSION |
|-------------------|----------------|------------------|-------------------|---------------|------------------|
| d4:6a:91:25:18:16 | SB-P2-32-1K-BL | ST2240025719681E | D4:6A:91:25:18:16 | 192.168.1.132 | 1.0.3.5          |

Successful password change and login – if you have changed the username and password – Press Reboot on the webui to reboot the TV and sync the username and password to the IP control login.

Log into the TV using a web browser to verify the username and password

Default is sunbrite/sunbrite

First login will force a change. Change it to sunbritev/sunbritev or any combination of your choosing.

Note: most drivers are defaulted to sunbritev/sunbritev

if you have changed the username and password – Press Reboot on the TV webui to reboot the TV and sync the username and password to the IP control login.

**Partner: SunBriteTV****Model: IP*****Veranda 2 setup***

SKU's supported

SB-V-43-4KHDR-BL

SB-V-55-4KHDR-BL

SB-V-65-4KHDR-BL

SB-V-75-4KHDR-BL

- Firmware must be 3.0.7 (3.0.8 recommended)

Enable the IP port when the TV is in Standby

User menu –

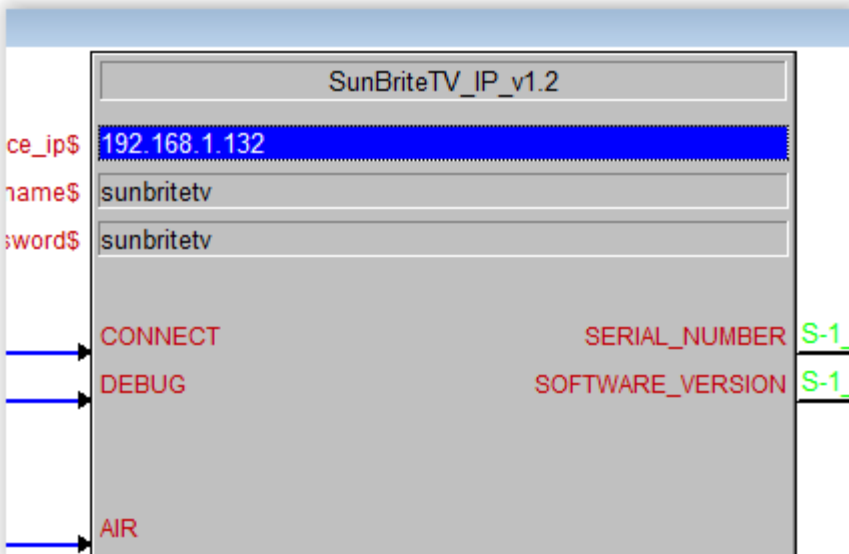
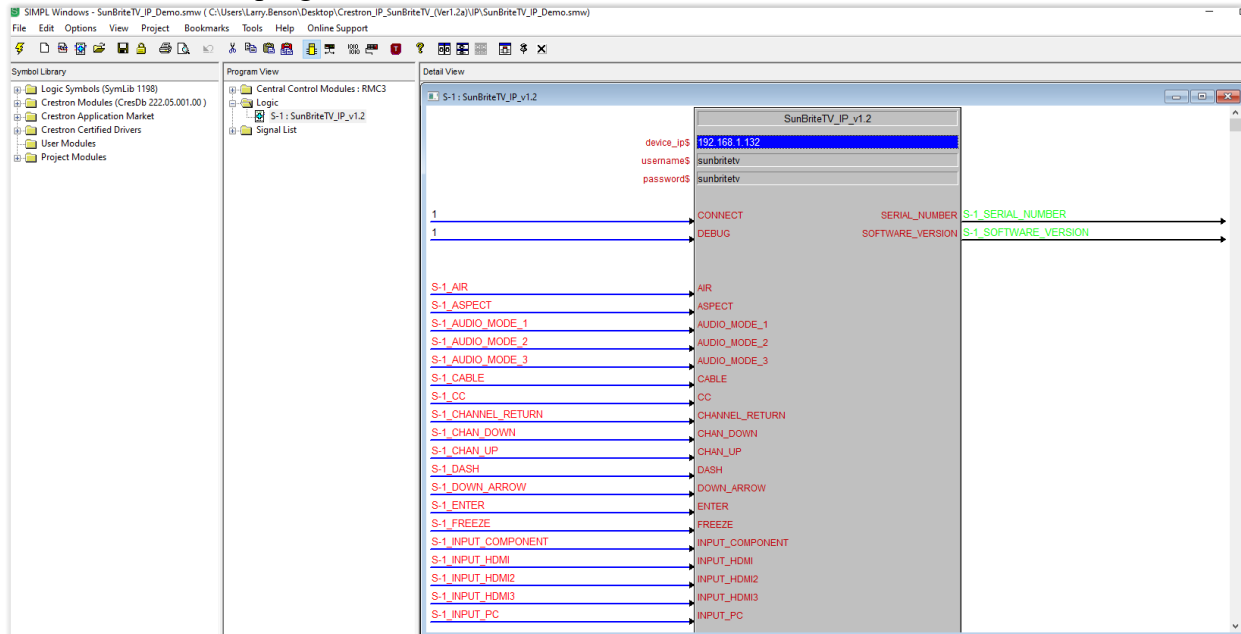
- Enable Quickstart
- Auto Power On = Memory

## Partner: SunBriteTV Model: IP



Crestron as tested.

Siml Windows test program

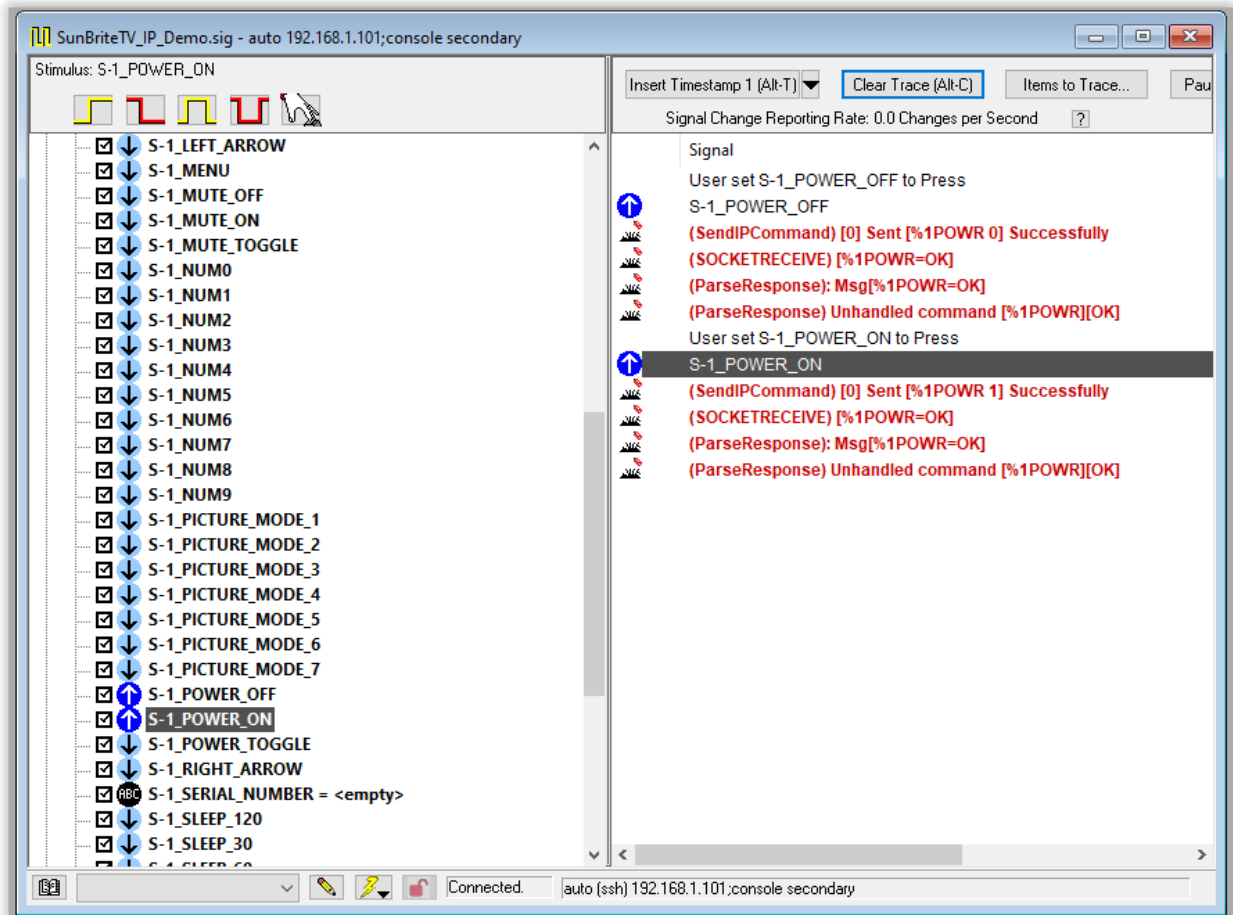




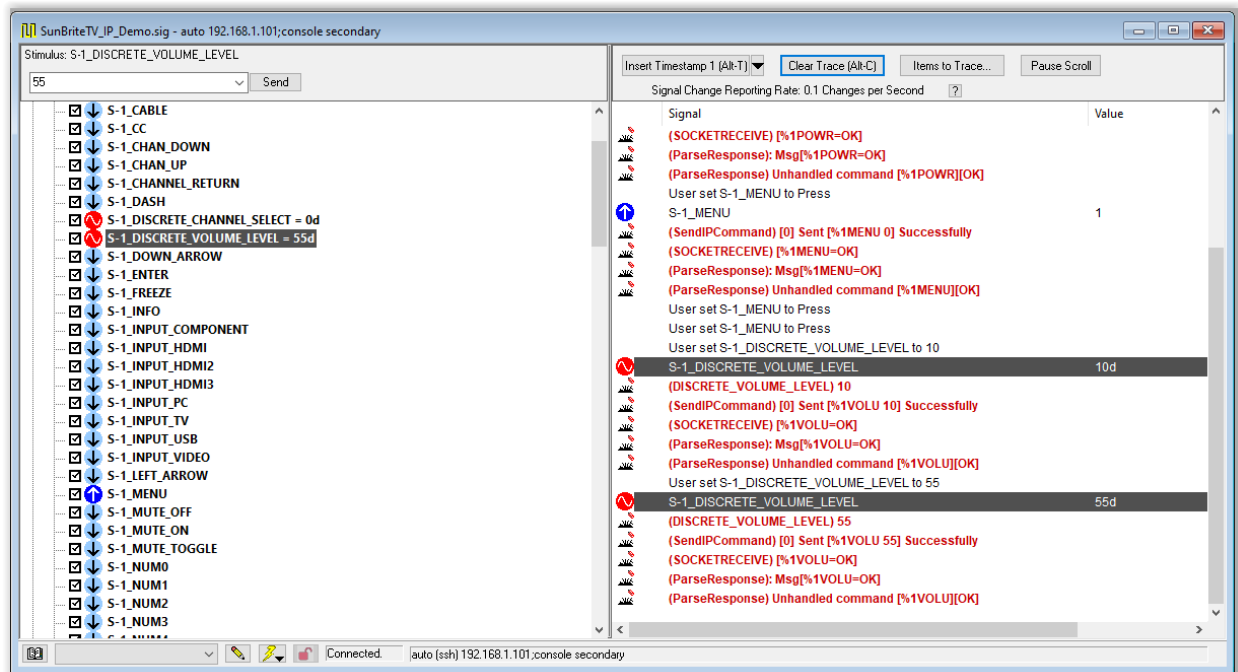
**Partner: SunBriteTV**  
**Model: IP**



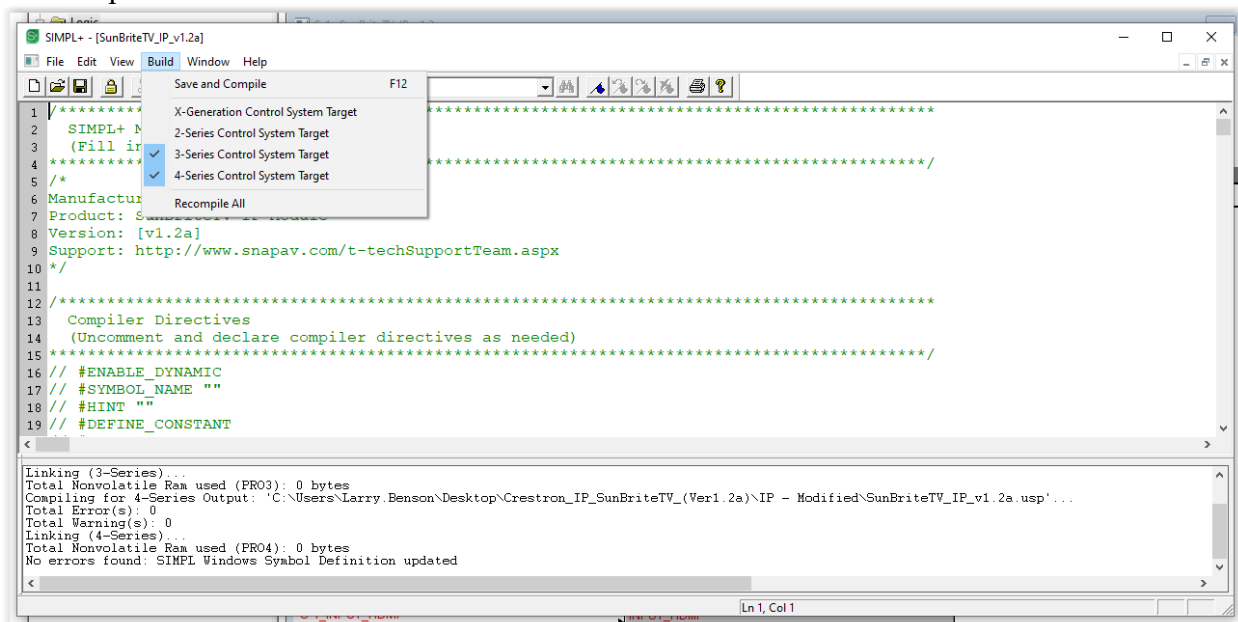
Toolbox / Simple debugger – turn on – turn off – set volume level



## Partner: SunBriteTV Model: IP



## Driver updates



Can be compiled for 3 or 4 series processors.