

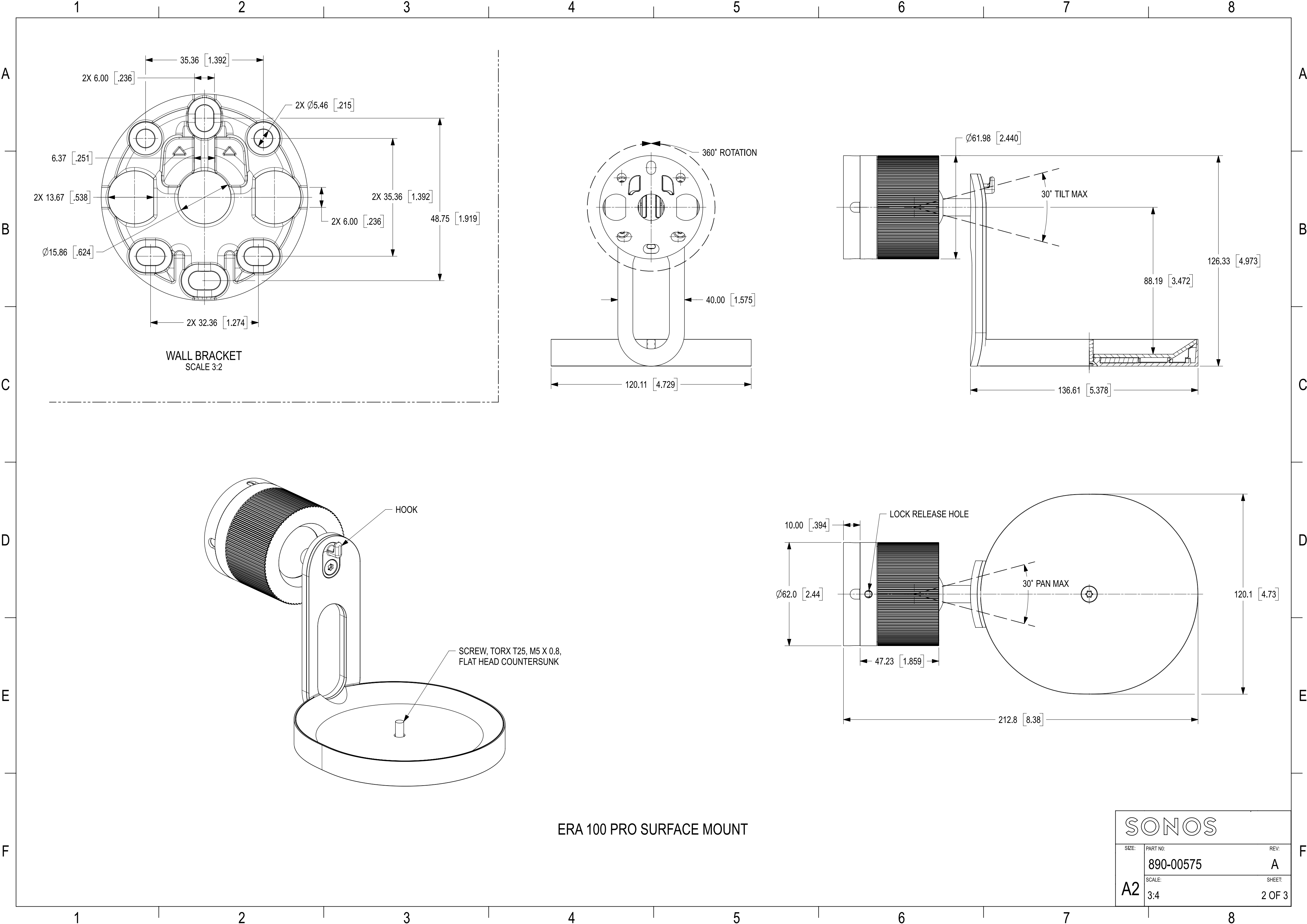
REV	ECO NO	DESCRIPTION	DRAWN	CHECK	DATE
A.01	-	INITIAL RELEASE	BN	ZM	2024-06-10

ITEM	DESCRIPTION	QTY
1	BLUETOOTH BUTTON	1
2	SAFETY EYEBOLT	1
3	HOOK RECEPTACLE	1
4	MIC SWITCH	1
5	ETHERNET PORT, RJ45 (POE)	1
6	M5 X 0.8 THD X 10.0 DEPTH MAX	1

METL J CHERVIN ENGINEER 1 Z MANTARAKIS ENGINEER 2						DATE 2024-06-07 DATE 2024-06-07 DATE 2024-06-07	
DRAFTER B NAYLOR CHECKER		DATE 2024-06-07 DATE		SIZE: A2		THIRD ANGLE PROJECTION 	
PART NO: 890-00575		REV: A		SCALE: 3 : 4		SHEET: 1 OF 3	

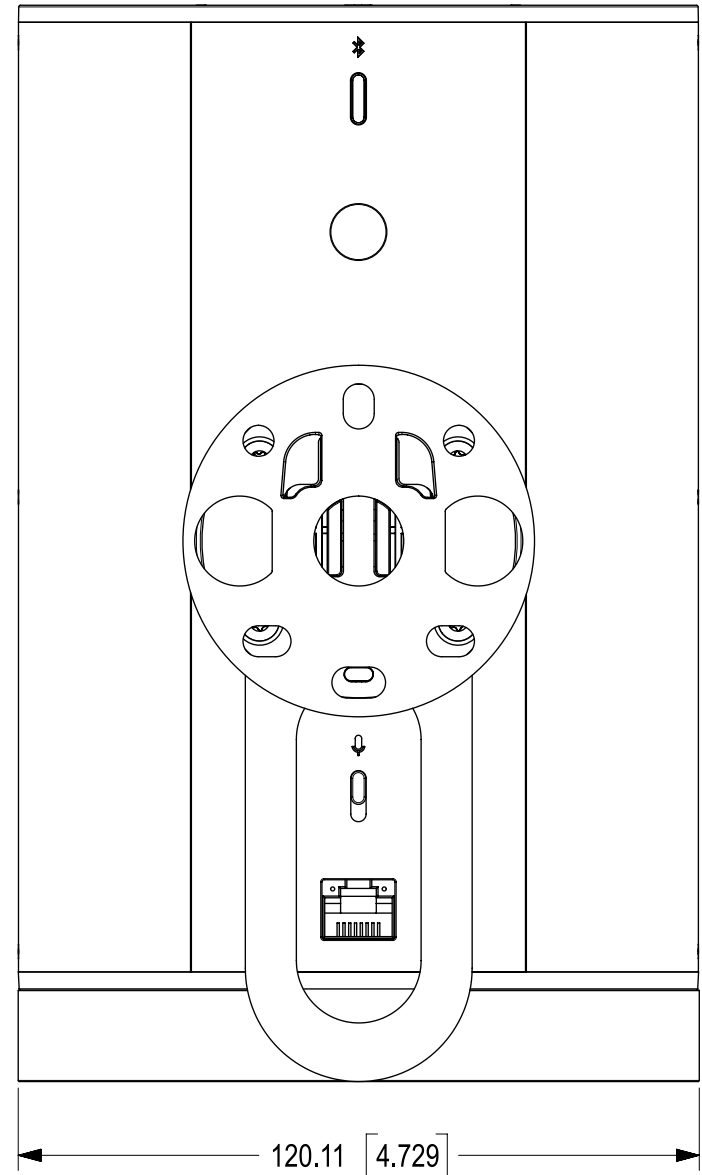
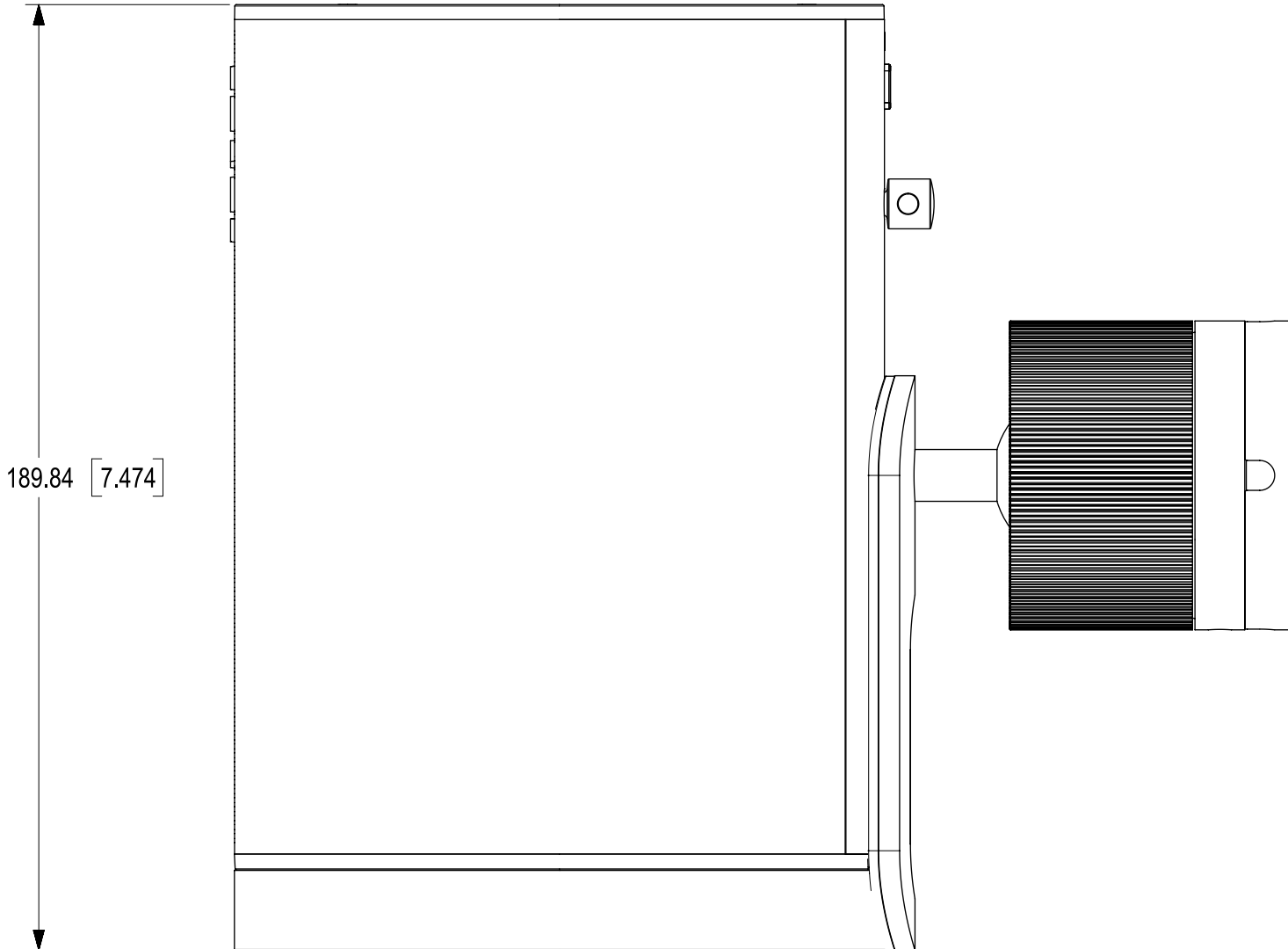
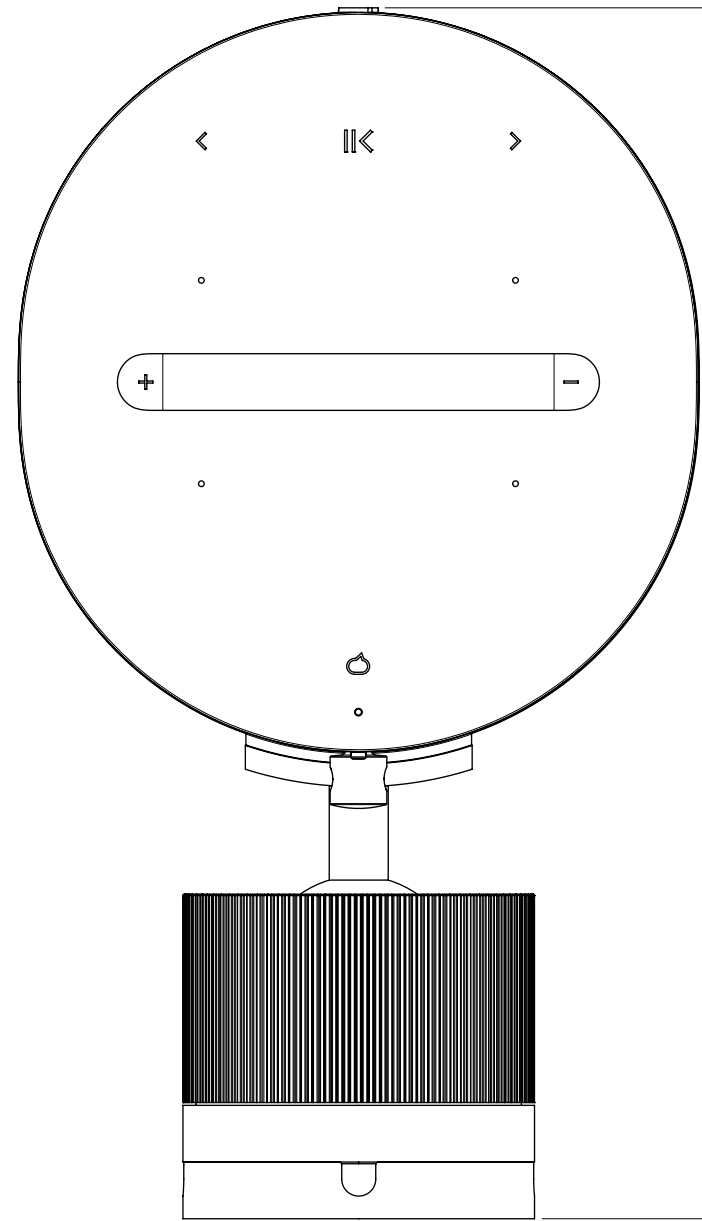
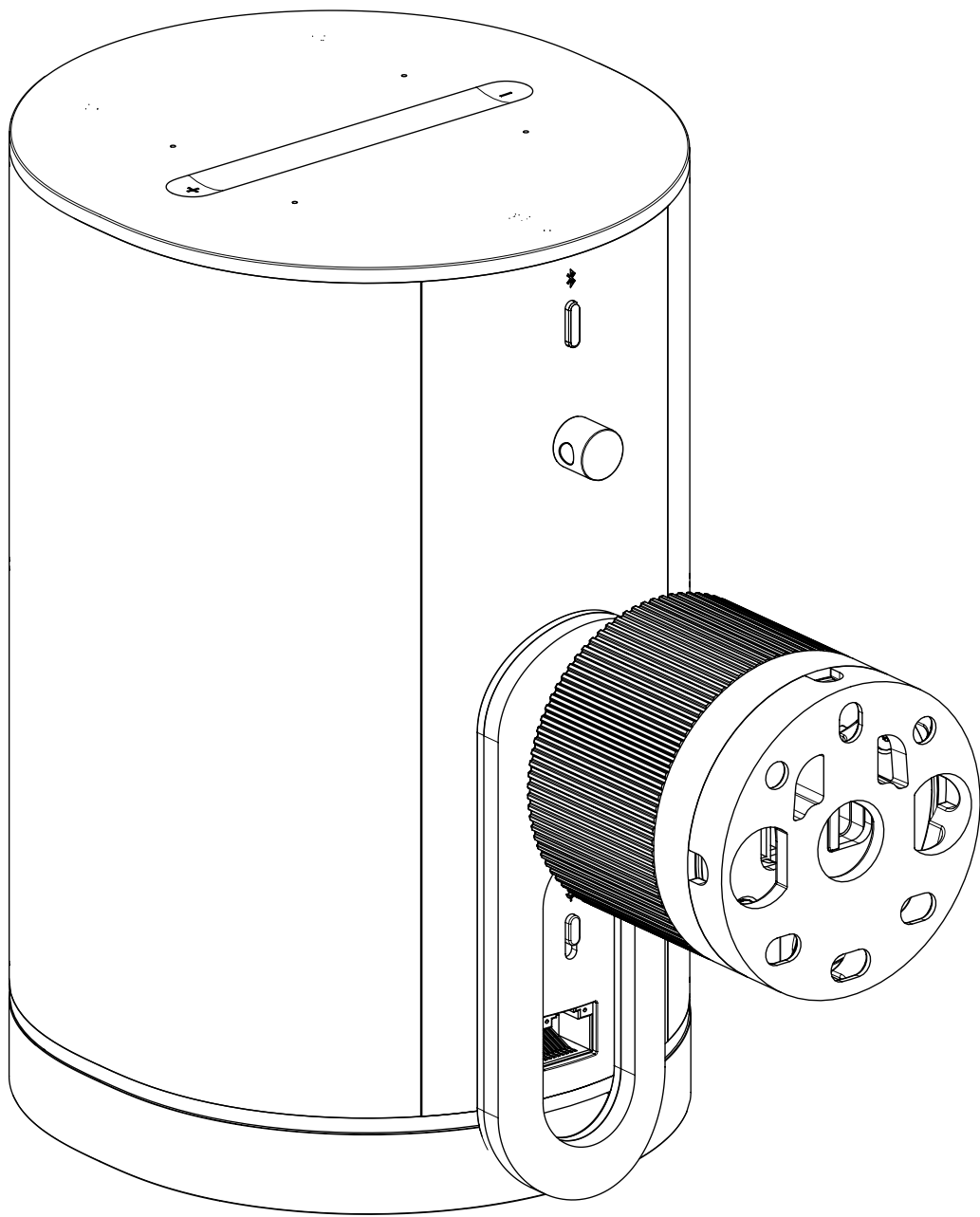
THIS DOCUMENT AND THE INFORMATION CONTAINED HEREIN ARE PROPRIETARY TO SONOS INCORPORATED AND SHALL NOT BE USED BY, OR DISCLOSED IN WHOLE OR IN PART TO ANYONE OUTSIDE OF SONOS INCORPORATED WITHOUT THE PRIOR WRITTEN PERMISSION OF SONOS INCORPORATED.

NOTES:
1. DUAL DIMENSIONS: INCHES ARE IN BRACKETS



SONOS

SIZE:	PART NO:	REV:
A2	890-00575	A
SCALE:	SHEET:	
3:4	2 OF 3	



ERA 100 PRO WITH ERA 100 PRO SURFACE MOUNT