



Episode Extreme Environment In-Ceiling Speaker

ES-XTR-6-IC, ES-XTR-8-IC

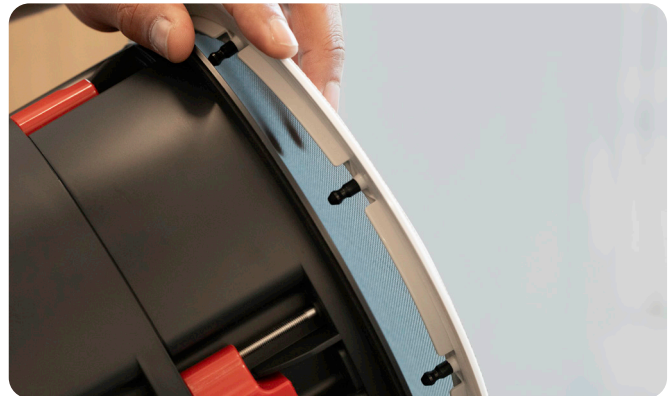
Episode Extreme Environment In-Ceiling Speakers are purpose-built for extreme environments. They are expertly designed to thrive in the harshest conditions. Whether enduring extreme temperatures, relentless moisture, salty air, or high winds, these speakers are designed to deliver uncompromising performance and exceptional durability.

From a screened porch to a coastal home, sauna, or boat, you can trust Episode speakers to provide reliable sound with unmatched longevity, no matter where life takes you.



Protection from Every Angle

Episode Extreme Environment Speakers take durability to the next level with a fully IP67-rated design, ensuring complete protection against dust and water. The factory-installed rear enclosure is completely sealed, while a gasket further protects both the front and back, eliminating water intrusion. This speaker is built to withstand the toughest conditions, delivering unmatched reliability in any environment.

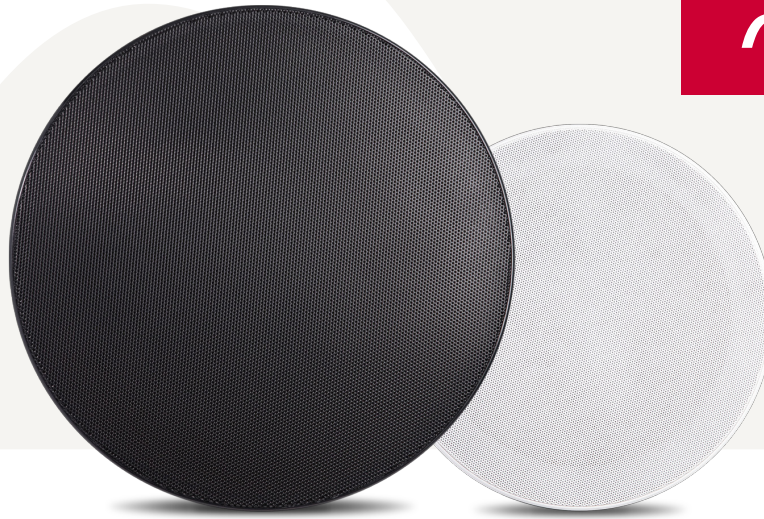


Rust-Free, Clip-in Aluminum Design

Made from rustproof aluminum, our outdoor speaker grille features a secure clip-in design that doesn't rust and holds firmly — even in hurricane-force winds. An optional black grille is available for a sleek, customizable look.

Episode Extreme Environment In-Ceiling Speakers

	ES-XTR-6-IC	ES-XTR-8-IC
Dimensions (LxWxH)	Ø9.74*H5.01 inches	Ø11.1*H7.03 inches
	Ø247.4*H127.4 mm	Ø282*H178.6 mm
Weight	4.86 lbs	6.18 lbs
	2.21 kg	2.8 kg
Mounting Depth	4.82 inches	6.83 inches
	122.5mm	173.7mm
Cutout Size	8.22"	9.6"
	209mm	244mm
Anechoic Frequency Response	Without DSP: 105Hz–20kHz With DSP Tuning: 70Hz–20kHz	Without DSP: 90Hz–20kHz With DSP Tuning: 60Hz–20kHz
Nominal Impedance	8 Ohm	8 Ohm
Crossover Frequency	2.5 kHz	2.2 kHz
Power Peak	130W	130W
Power RMS	65W	65W
Sensitivity	89dB	90dB
Operating Temperature	–30C to +80C / –20F to+175F	–30C to +80C / –20F to+175F
Woofer QTY/ Size / Material	6.5" Injection Molded Polypropylene Cone w/ Rubber Surround	8" Injection Molded Polypropylene Cone w/ Rubber Surround
Woofer Voice Coil Size	25.5mm	25.5mm
Woofer Excursion (Peak to Peak):	15.5mm	23mm
Tweeter Size / Materials	3/4" Titanium Dome Tweeter	1" Titanium Dome Tweeter
Speaker Connector Type	316L Stainless steel spiral binding post, red/black	316L Stainless steel spiral binding post, red/black
Dog Clamping Range	0 - 1-3/8", 0-35mm	0 - 1-3/8", 0-35mm
Compatible Replacement Grille	ES-GRL-XTR-6 / ES-GRL-XTR-6-BK	ES-GRL-XTR-8 / ES-GRL-XTR-8-BK
Compatible New Construction Bracket	ES-ESS-BRKT-IC-6	ES-ESS-BRKT-IC-8
U of M (Sold as)	Each	Each
Gift Box Specifications		
Gift Box UPC Code	842822068666	842822068673
U of M (Sold as)	Each	Each
Gift Box Dimensions	L13.18*W13.18*H7.48 (Inches) L335*W335*H190 (mm)	L14.29*W14.29*H9.72 (Inches) L363*W363*H247 (mm)
Shipping Weight	7.52 (lbs), 3.41 (kg)	9.87 (lbs), 4.48 (kg)



Episode Extreme Environment In-Ceiling Speaker Grille

ES-GRL-XTR-6, ES-GRL-XTR-6-BK, ES-GRL-XTR-8, ES-GRL-XTR-8-BK

This grille features a sleek thin-bezel frame and an installer-friendly clip-in aluminum design that can withstand hurricane force winds and won't rust. These grilles are specifically designed for Episode Extreme Architectural speakers and are available in Black or White.

	ES-GRL-XTR-6	ES-GRL-XTR-6-BK	ES-GRL-XTR-8	ES-GRL-XTR-8-BK
Dimensions (LxWxH)	Ø11.1*H0.85 inches	Ø11.1*H0.85 inches	Ø11.1*H0.85 inches	Ø11.1*H0.85 inches
	Ø282*H21.6 mm	Ø282*H21.6 mm	Ø282*H21.6 mm	Ø282*H21.6 mm
Weight	0.35 lbs	0.35 lbs	0.41 lbs	0.41 lbs
	0.16 kg	0.16 kg	0.19 kg	0.19 kg
Gift Box Specifications				
Gift Box UPC Code	842822068734	842822069502	842822068727	842822069519
U of M (Sold as)	Each	Each	Each	Each
Gift Box Dimensions	L12.71*W12.71*H1.22 (Inches) L323*W323*H31 (mm)	L12.71*W12.71*H1.22 (Inches) L323*W323*H31 (mm)	L13.62*W13.62*H1.22 (inches) L346*W346*H31 (mm)	L13.62*W13.62*H1.22 (inches) L346*W346*H31 (mm)
Shipping Weight	0.72 (lbs), 0.32 (kg)	0.72 (lbs), 0.32 (kg)	0.84 (lbs), 0.38 (kg)	0.84 (lbs), 0.38 (kg)
Master Carton Specifications				
Master Carton UPC Code	842822068734	842822069502	842822068727	842822069519
Master Carton Qty	10	10	10	10
Master Carton Dimensions	L13.18*W12.78*H13.89 (inches) L335*W325*H353 (mm)	L13.18*W12.78*H13.89 (inches) L335*W325*H353 (mm)	L14.29*W12.78*H14.8 (inches) L363*W325*H376 (mm)	L14.29*W12.78*H14.8 (inches) L363*W325*H376 (mm)
Shipping Weight	8.99 (lbs), 4.08 (kg)	8.99 (lbs), 4.08 (kg)	10.67 (lbs), 4.84 (kg)	10.67 (lbs), 4.84 (kg)