

# CONTROL4 SAMPLE INSTALL

FOR AUTONOMIC STREAMERS AND AMPLIFIERS

COMPATIBLE WITH



MMS-5A



MMS-2A



MMS-1E

Control4<sup>®</sup> OS 2.8+

## Vocabulary

### MCP Driver

Mirage control program driver or MCP, also known as the central driver, is the conductor of the Mirage drivers. It makes communication between the MMS and processor appear similar to an MAS setup. According to the server, the MCP driver is an Autonomic amplifier, which allows communication with other control 4 compatible amplifiers.

### Instance Driver

The Instance driver represents and controls a single output on the MMS. One driver is needed per output on the MMS.

- A Series Instance: Instance driver for MMS-5A and MMS-2A servers
- eSeries instance: Instance driver for MMS-1e streamer.

### Favorites Driver

The Favorites driver will display and grant access to all saved favorites on the MMS. Favorites can also be linked to actions in the programming section under a specific room, they will appear as a broadcast audio items when browsing for media.

### Service Drivers

Service drivers are drivers for all the embedded streaming services offered on the MMS.

### Amp Driver

Provides user control over power, volume, source selection and zone selection for any Autonomic amplifier.

## MCP Actions

### Configure MMS

This action informs the MCP server of the available outputs based on the drivers available in the Control4 program.

### Refresh Driver State

The MCP server makes every effort to maintain up to date information on all of its bound Service drivers, but this can be forced using this action.

### Update Rooms

The MCP driver requires a current list of Autonomic services for each room in the project. It is important to press this button after adding or removing rooms and after completing initial setup.

# Pre-Configuration

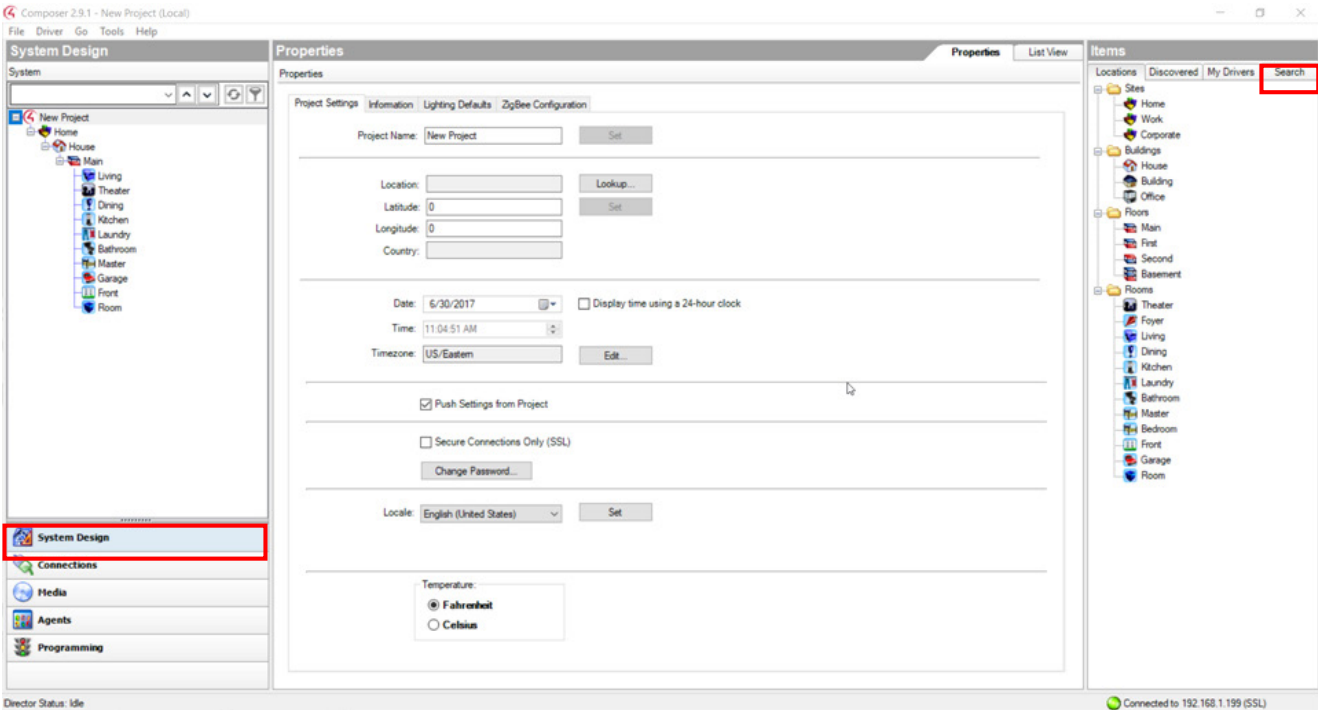
Confirm MMS is running the **minimum required firmware**.

- Autonomic Amplifiers should be on the latest public release
- MMS minimum supported firmware for Control4 driver
  - MMS-5A and MMS-2A: minimum firmware v. 5.3.5 or greater
  - MMS-1e: minimum firmware v. 6.0.20170509.0

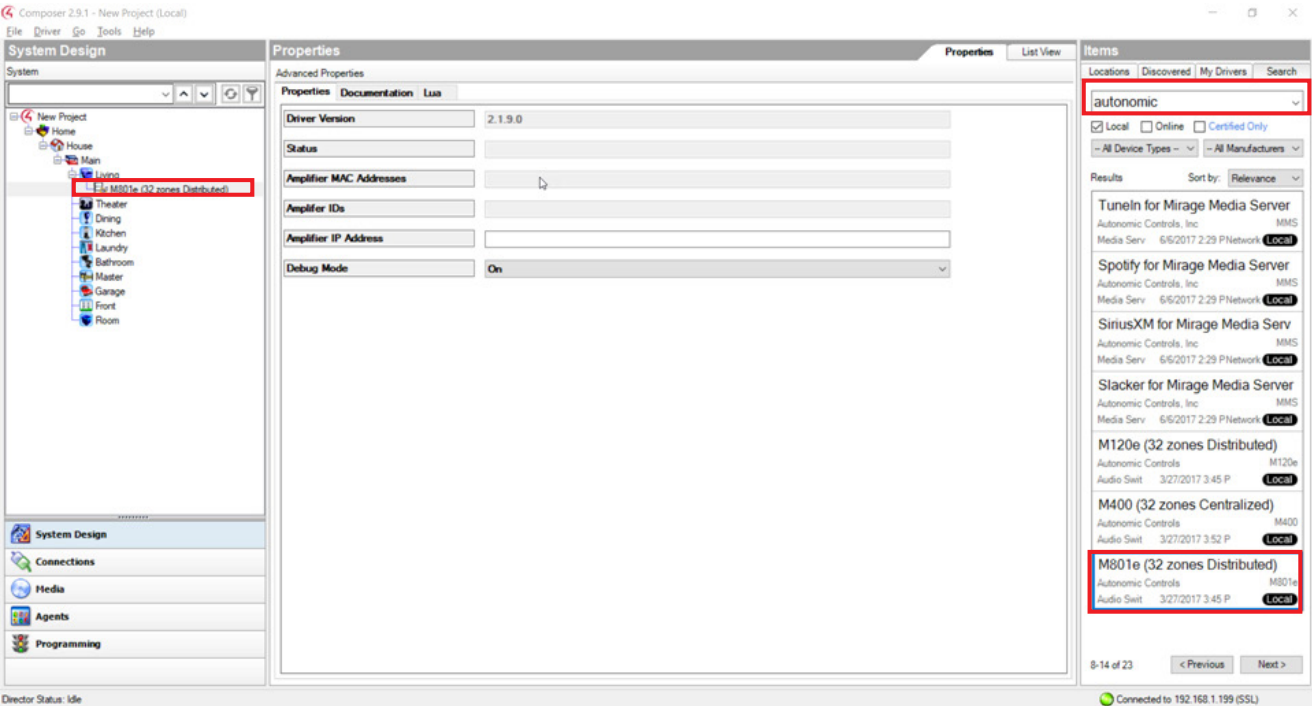
All eSeries systems comprised of “e” servers and amplifier models must be set on different stack IDs

# Configuration

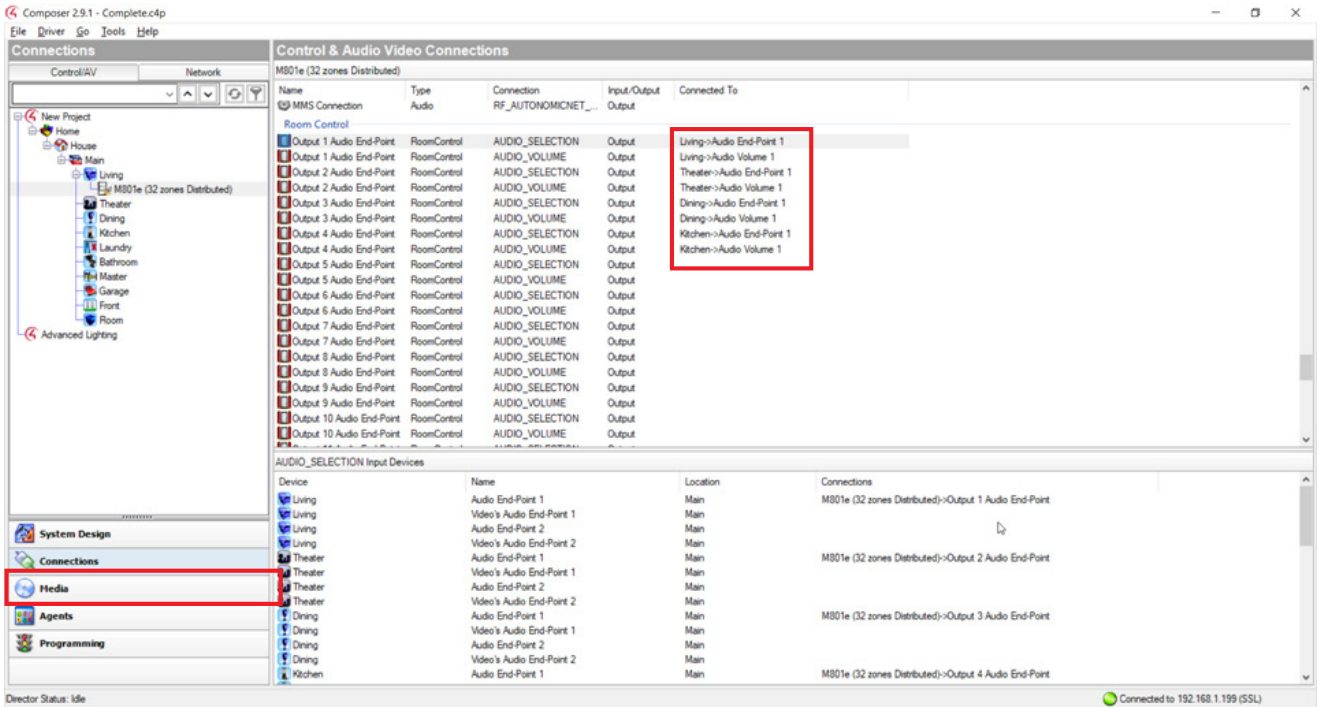
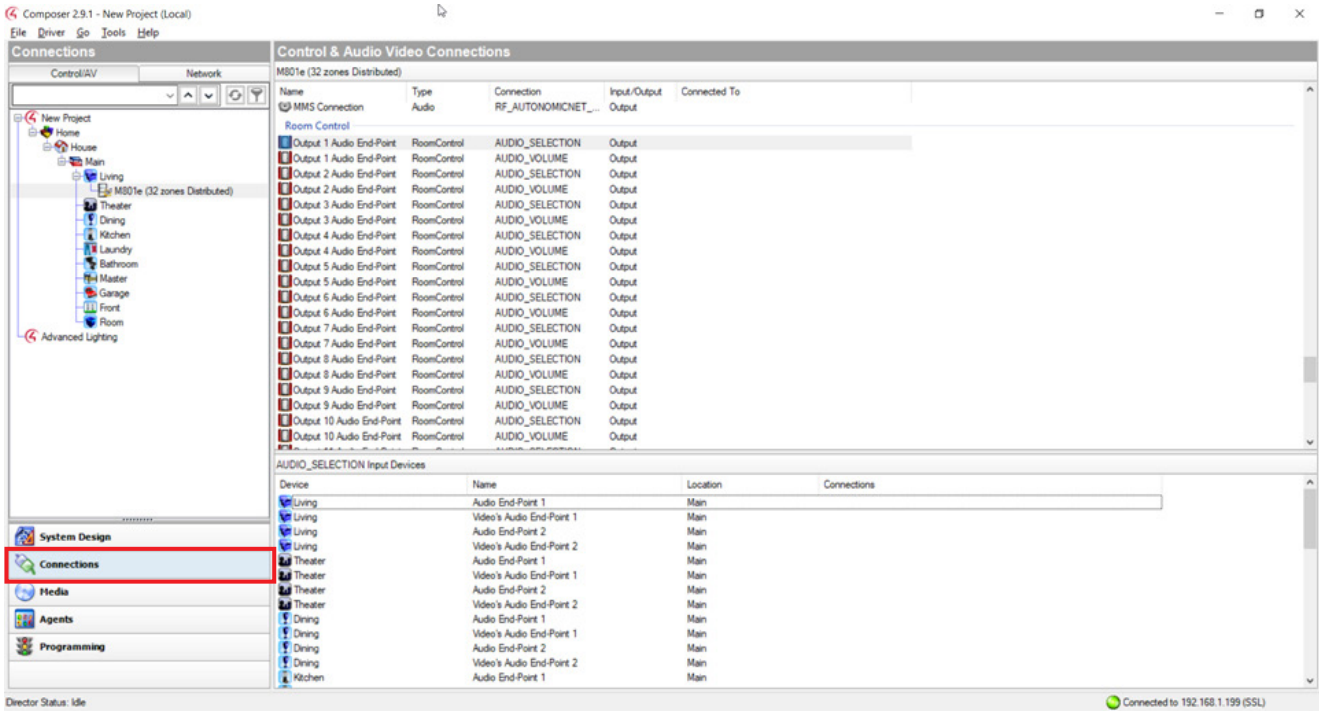
1. To begin, select the **System** view and add the amplifier driver. All drivers can be found by selecting the search tab in the **Items** box. Be sure to uncheck online to ensure the recently downloaded drivers are being used.



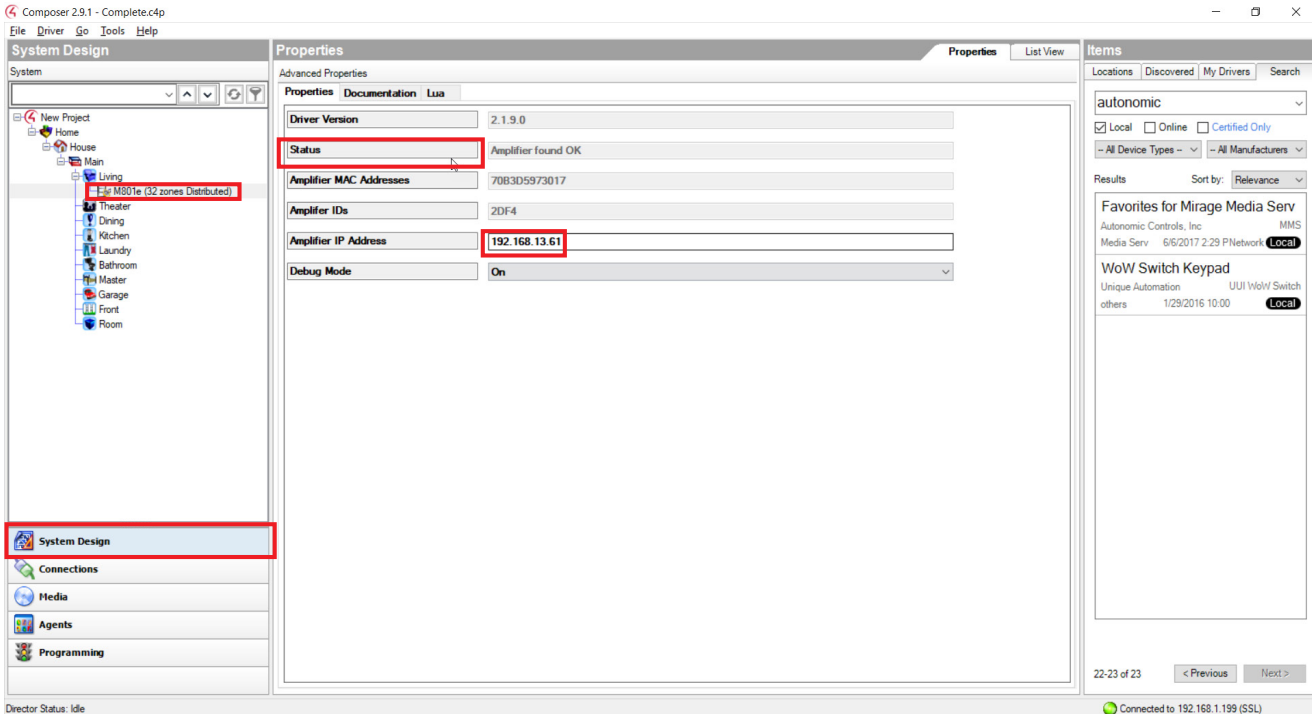
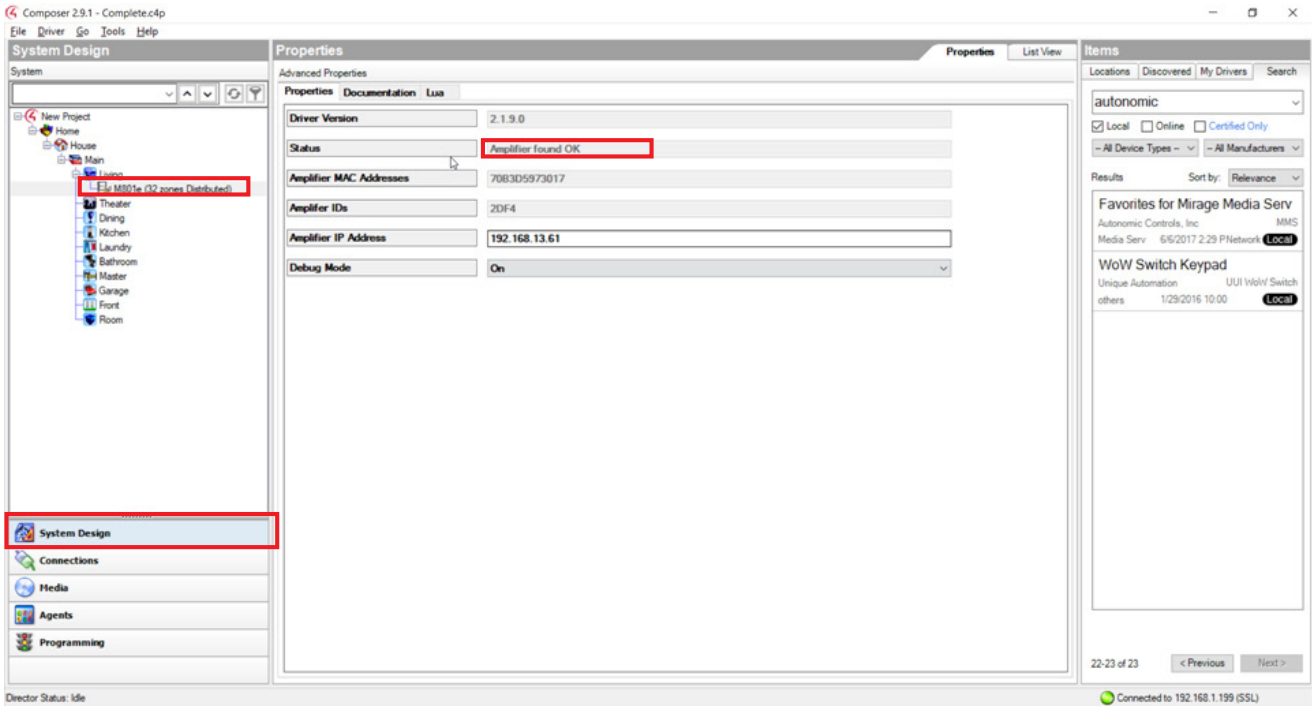
- 2. In the text field enter "Autonomic" and all drivers will populate. Double click the **M801e** driver to add it to your program.



3. Select the Connections view and set the end points to the zone



- 4. Go back to **Systems** view and set the amplifier IP address. After setting it, wait for the **Status** field to change to "Amplifier found OK".



Converge with a higher standard.

5. Add the rest of the drivers by adding the MCP driver followed by the Instance drivers.

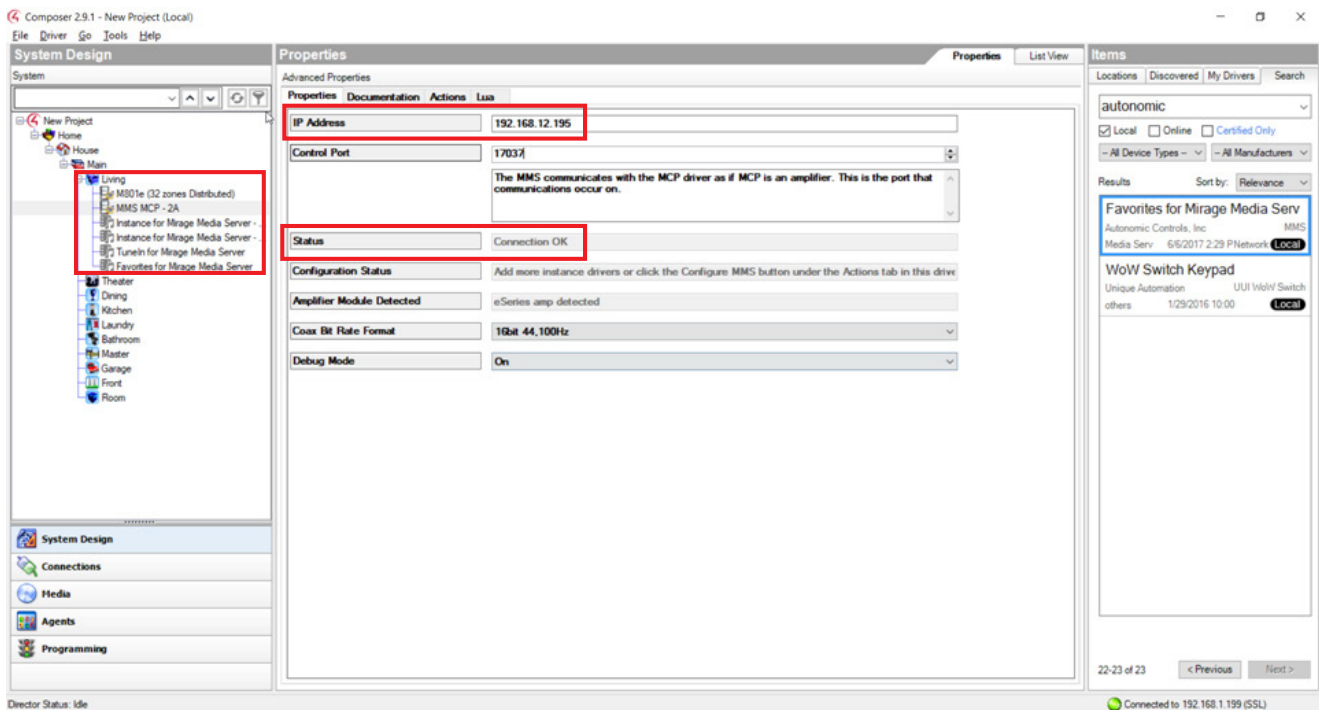
**NOTE:** Remember to add one instance driver per output of the MMS. Adding a streamer requires adding another MCP driver, however stacking amplifiers does not require adding another amplifier driver per amp in the stack.

6. Use the "A series driver" for A series units. Use an "eSeries" instance for eSeries servers.
7. Add all the drivers for the streaming services applicable for the end user.

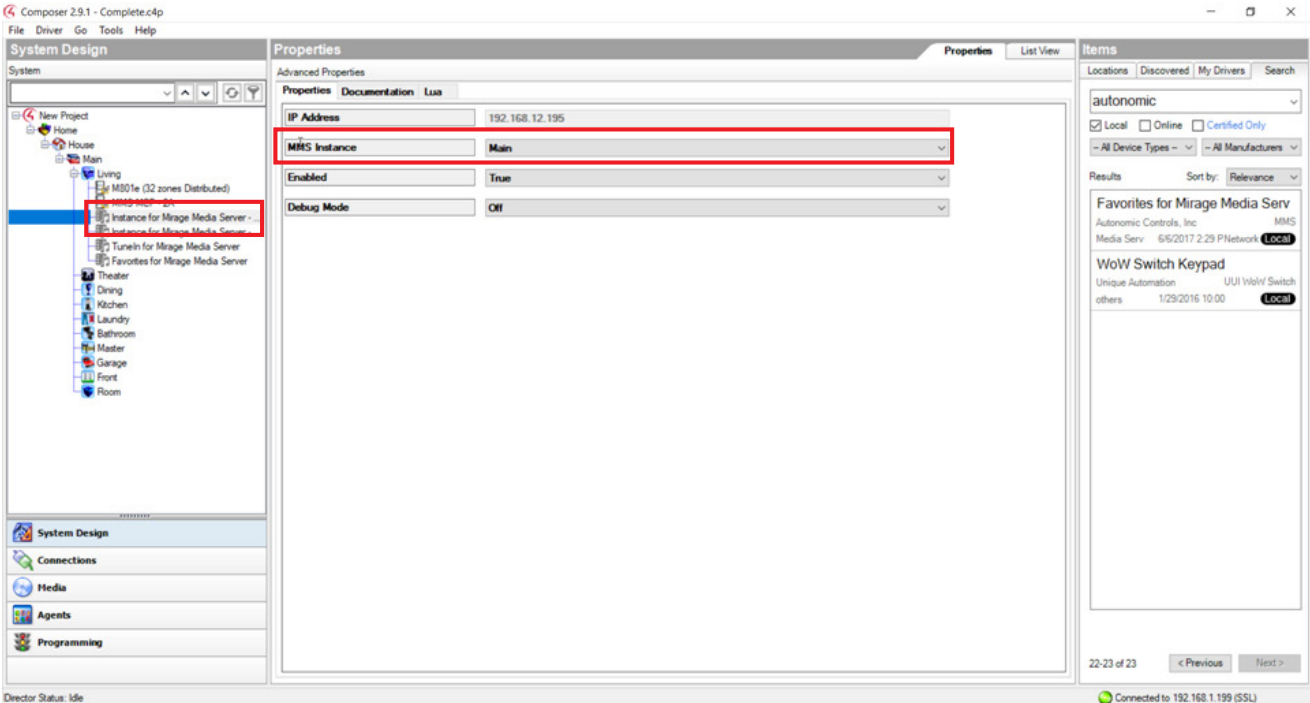
**NOTE:** All account credentials for streaming services need to be added on the configuration page of the MMS.

8. Select the MCP driver and enter the IP address of the MMS. Once Control4 has discovered the MMS, the status field will change to "Connection OK".

**Note:** The screenshot below shows an A Series MCP Instance driver.

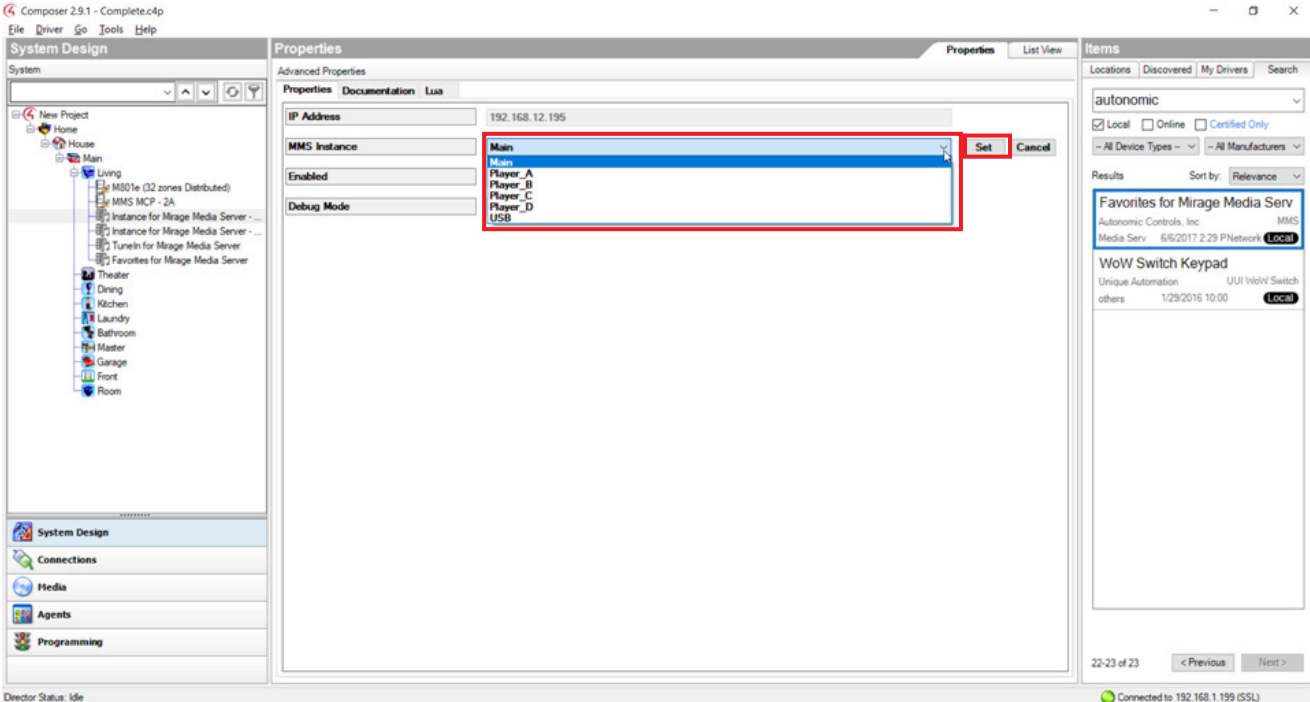


- 9. Set each instance driver to an output on the MMS. Select an instance driver and choose the output from the drop down menu.



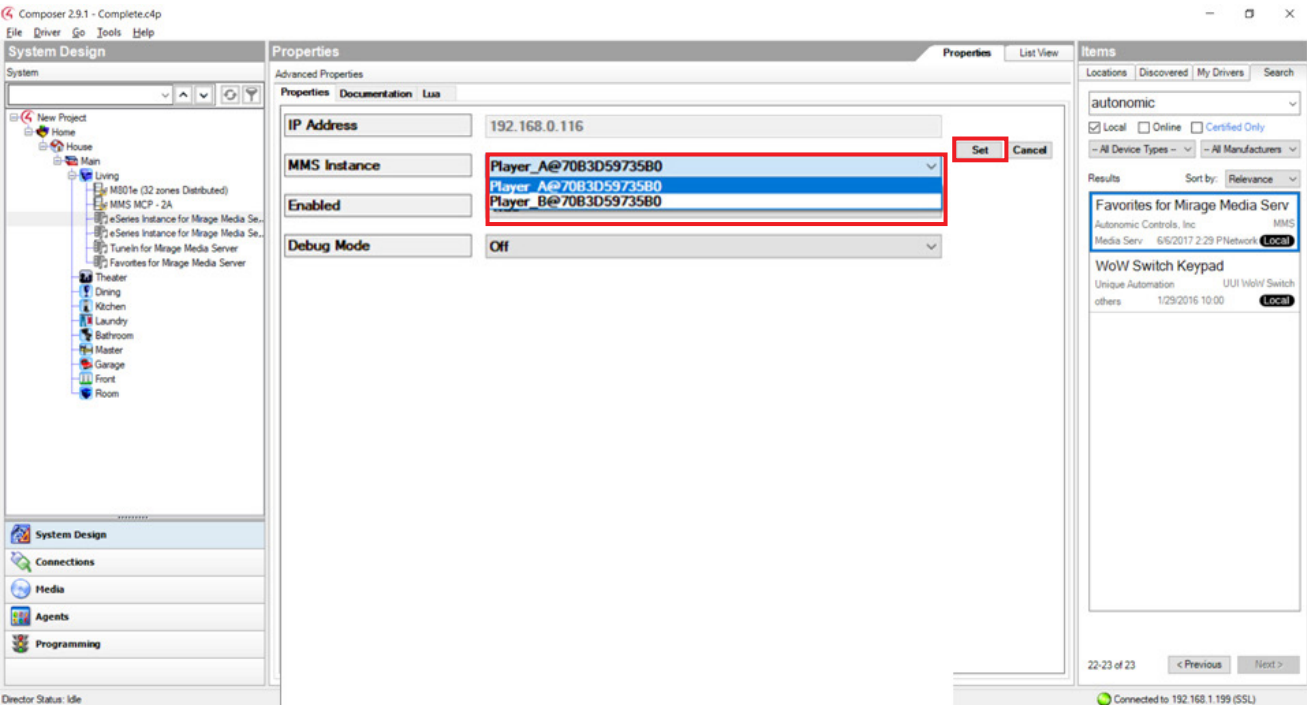
A Series MCP Instance Driver Setup shown below:

**NOTE:** Be sure to click on the set button after an output has been chosen.



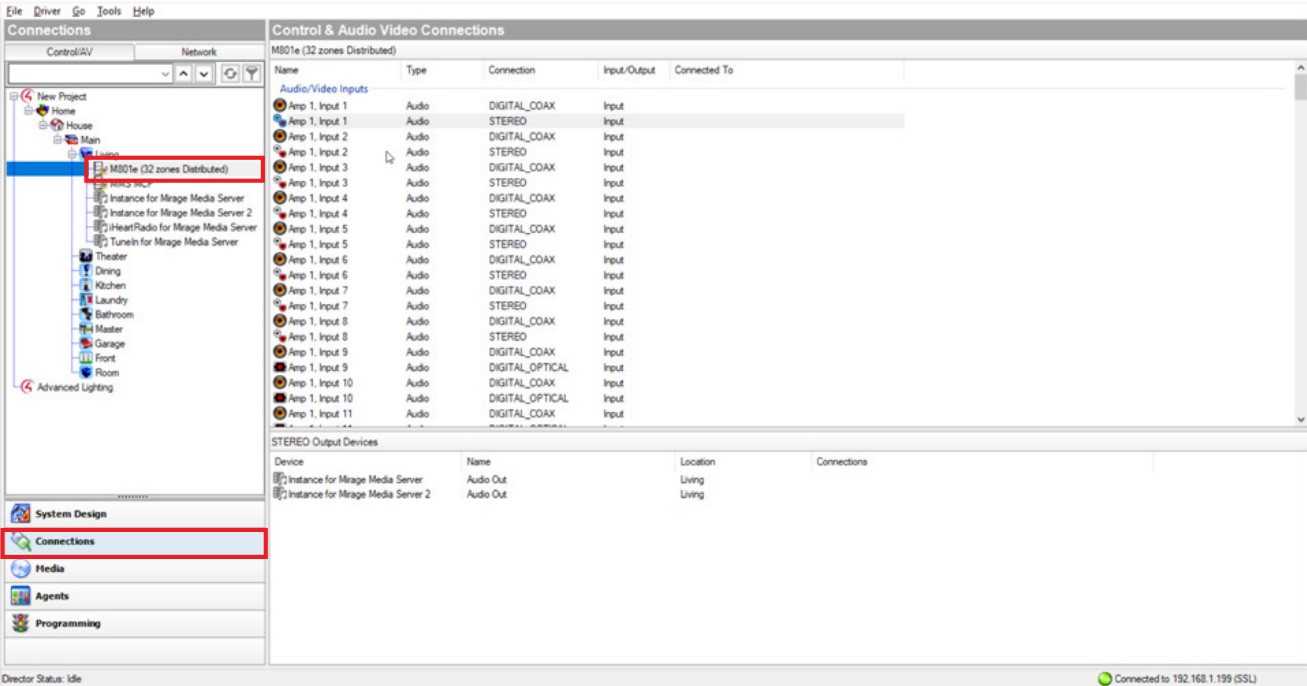


eSeries MCP Instance Driver Setup is shown below:



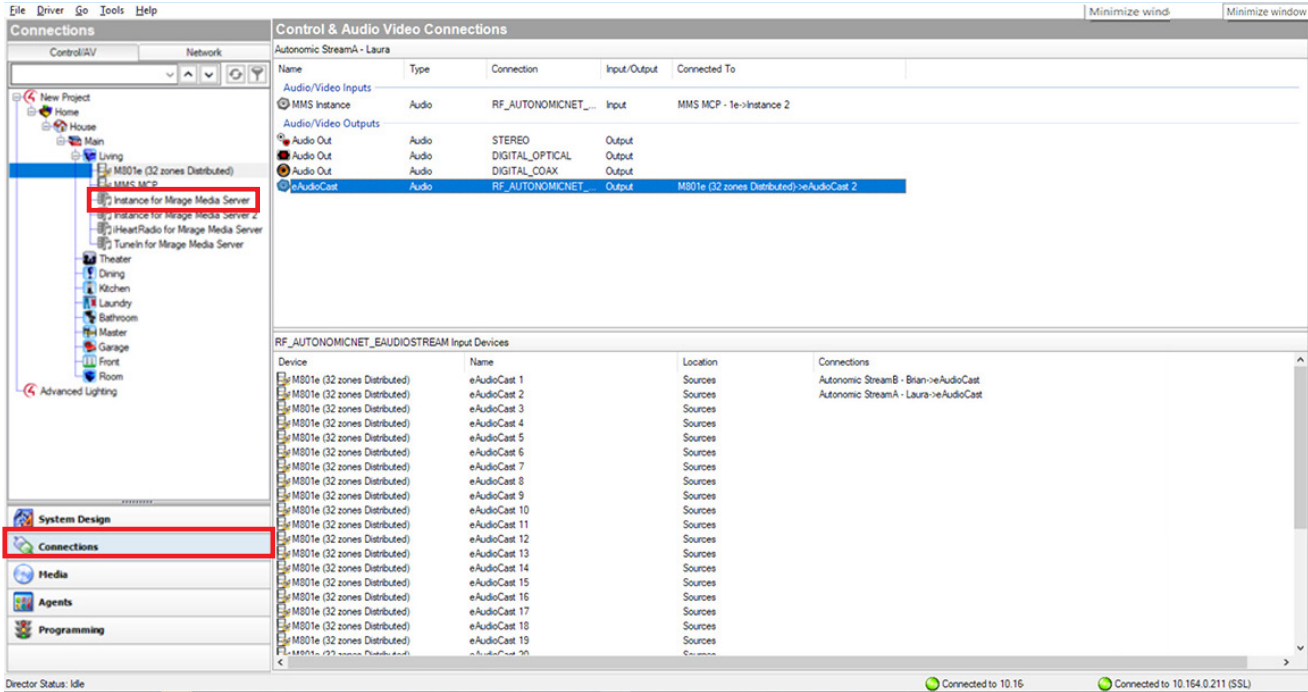
10. Now, go back to the “Connections” view and select the amplifier driver. Bind the instance driver to its corresponding amplifier input. Bind the physical output of the streamer to the amplifier input for A series streamers.

A Series amp driver selection process shown below:

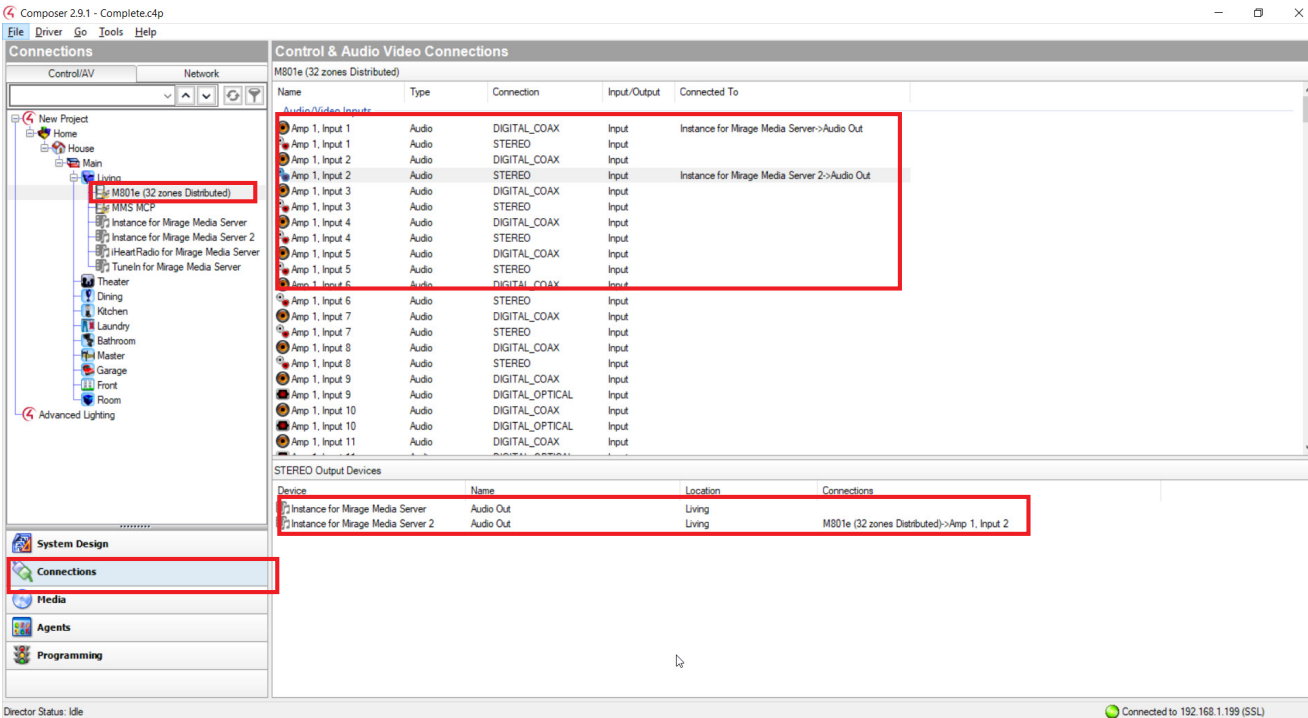


Converge with a higher standard.

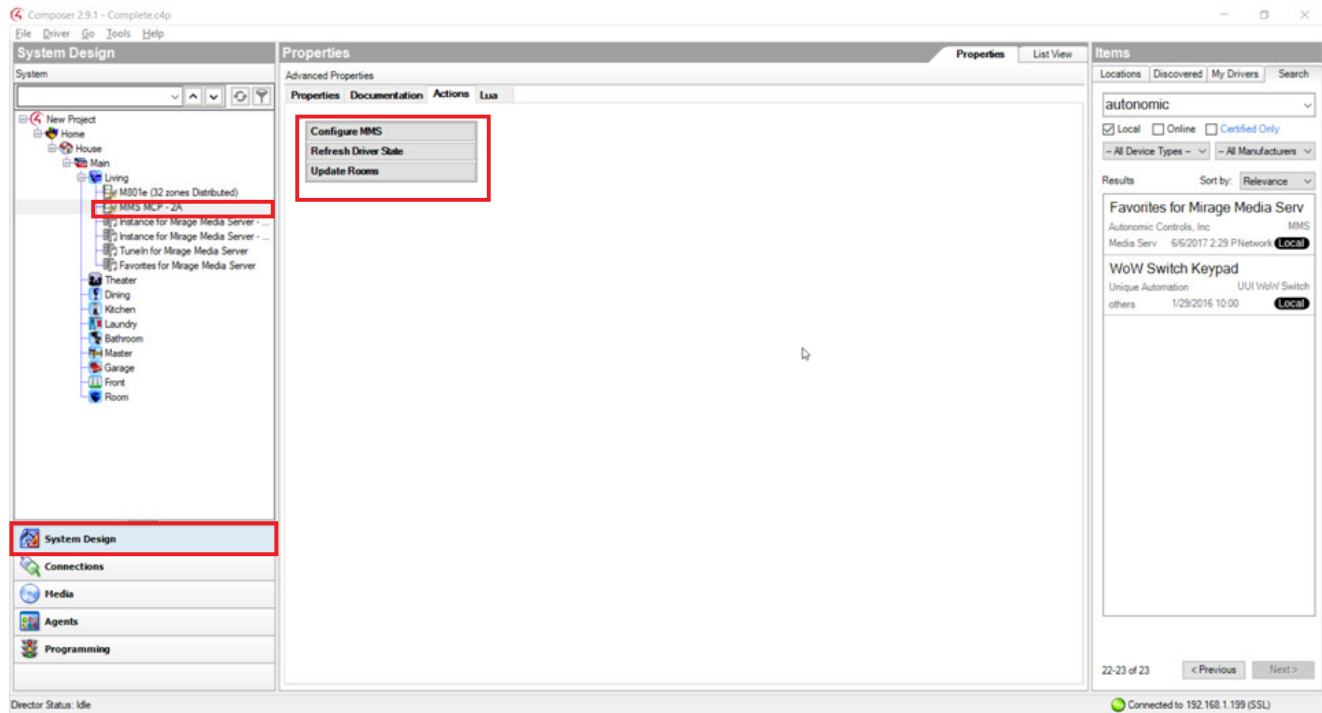
eSeries amp driver selection process shown below:



Binding the driver shown with an A Series driver.



11. Select the MCP driver and click on the **"Actions"** tab. The actions tab contains three buttons that will finalize the project.
  - a. First select the **"Update Rooms"** button and wait for the idle status.
  - b. Click on **"Refresh Driver State"**.
  - c. Select the **"Configure MMS"** button.

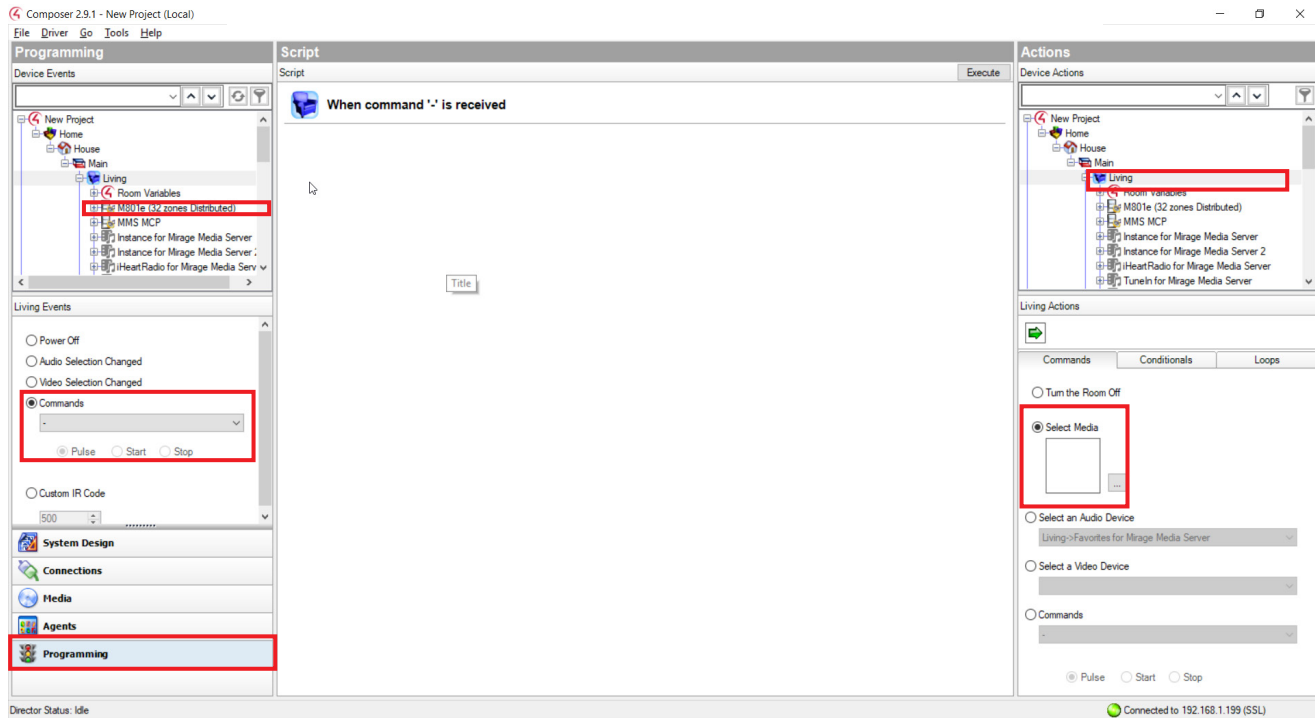


## Recall a Favorite

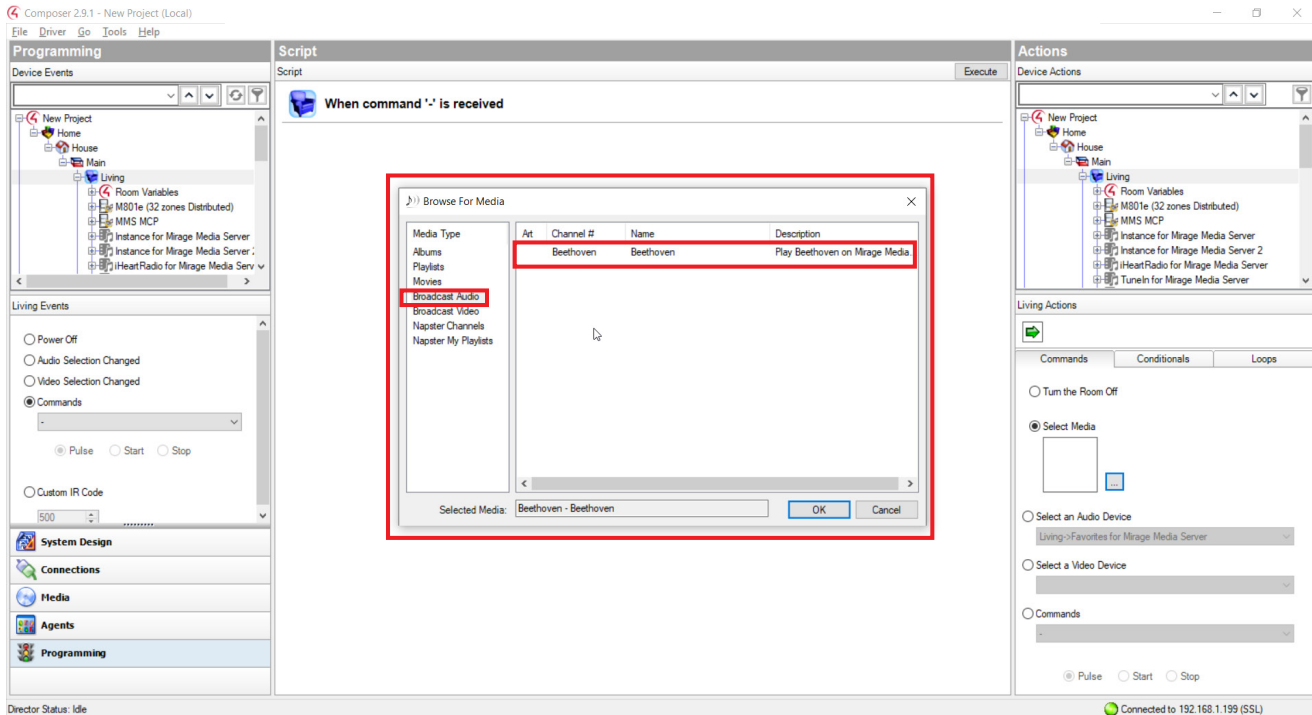
A favorite can be recalled to a single room or more using a Control 4 remote. Start the process in the **programming** view of Composer.

1. In the **programming** view, select a room from the device events window.

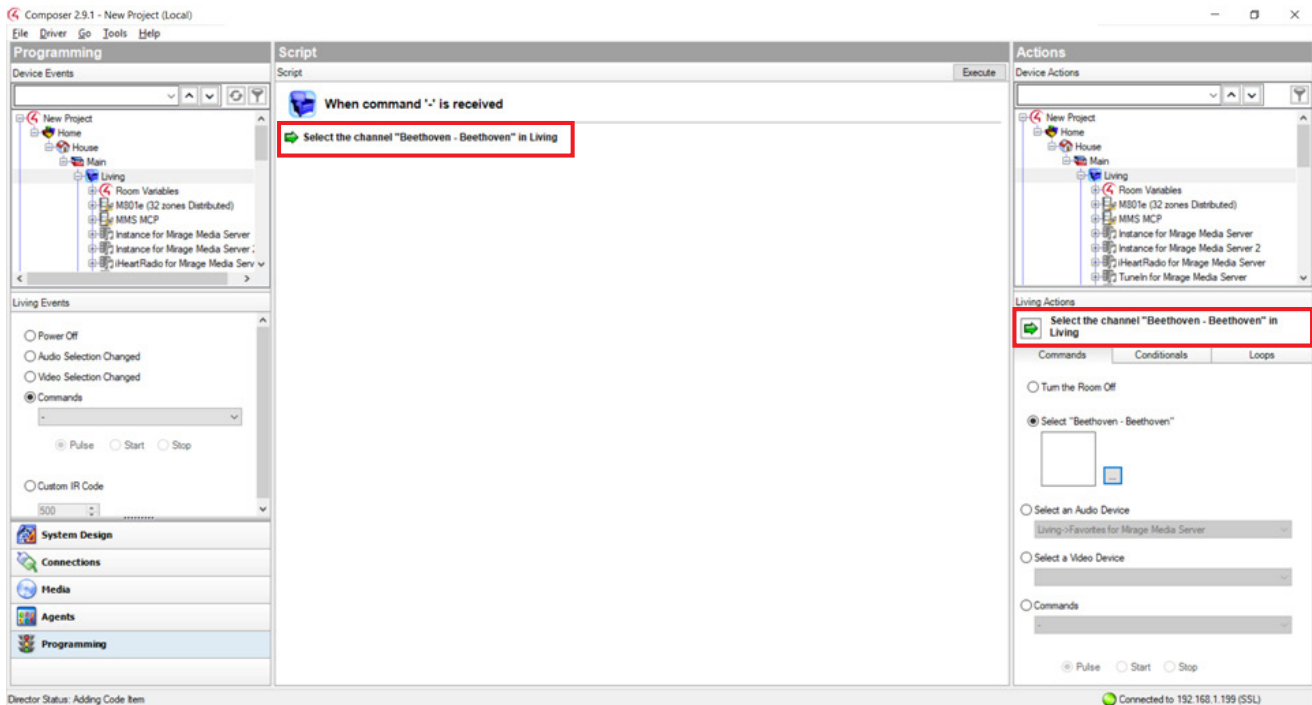
2. Go to the rooms events and select **commands**.
3. Choose the button press to program.
4. In the device actions window select the room in which the event will take place.
5. From the **rooms action window** choose **"Select Media"**, which will open up the browse for media pop up window.



6. Click **Broadcast Audio** in the pop up window and choose a favorite.

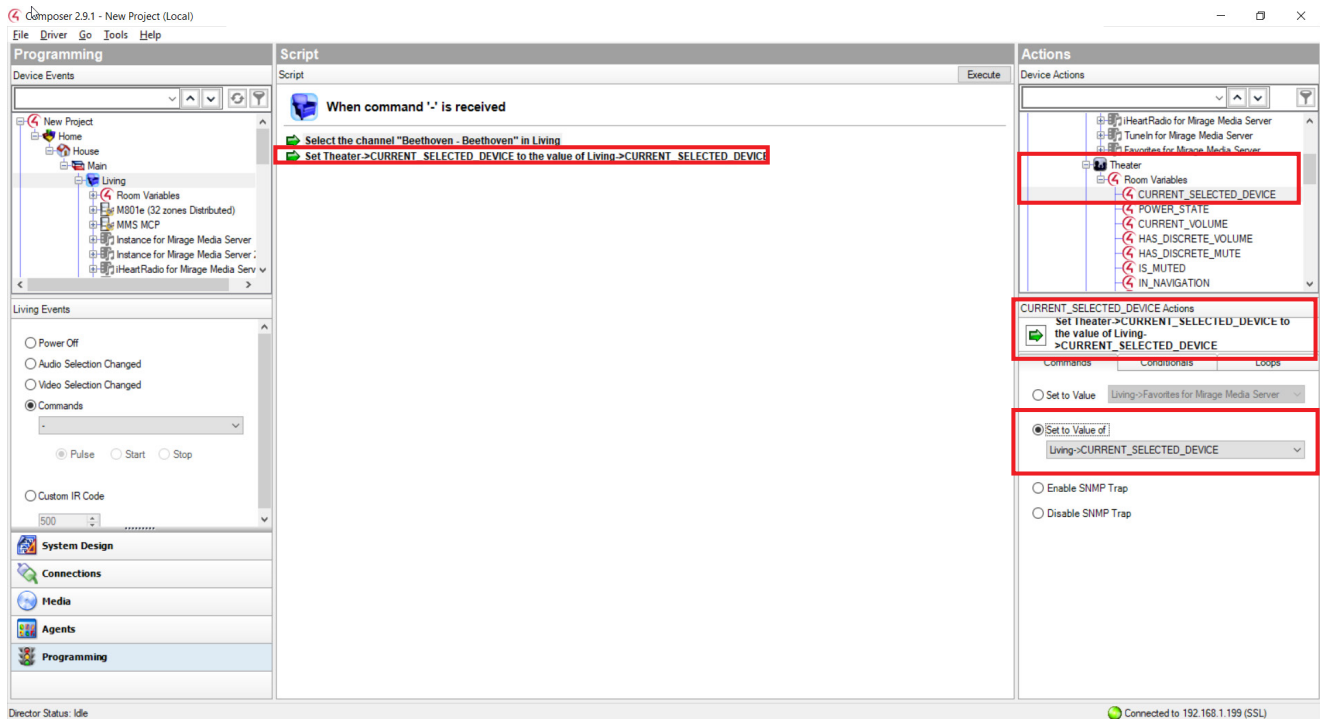


- After choosing a favorite, drag the **Room Actions** command to the middle script field. A one button press has now been created, favorites recall to one room.



- To make the favorites event occur in more than one room:

- a. Click on the drop-down for the second rooms variables in the Device actions window and select **"Current\_Selected\_Device"**.
- b. In the action window, click **"Set to Value of"** and choose the room to which the favorite was first configured with, and the **"Current\_Selected\_Device"** parameter.
- c. Drag the action command to the middle script field. Repeat these steps to add more rooms.



## Isolate an Output to a Specific Room

Go to the systems design view and select the room to which an output will be isolated.  
Click the **Navigator** tab in the **Properties** window and select **Music** in the submenu filters.  
Next, select the **Modify** button from the **Device Visibility and Display Order** window.

The screenshot shows the Composer 2.9.1 interface with the following elements highlighted in red:

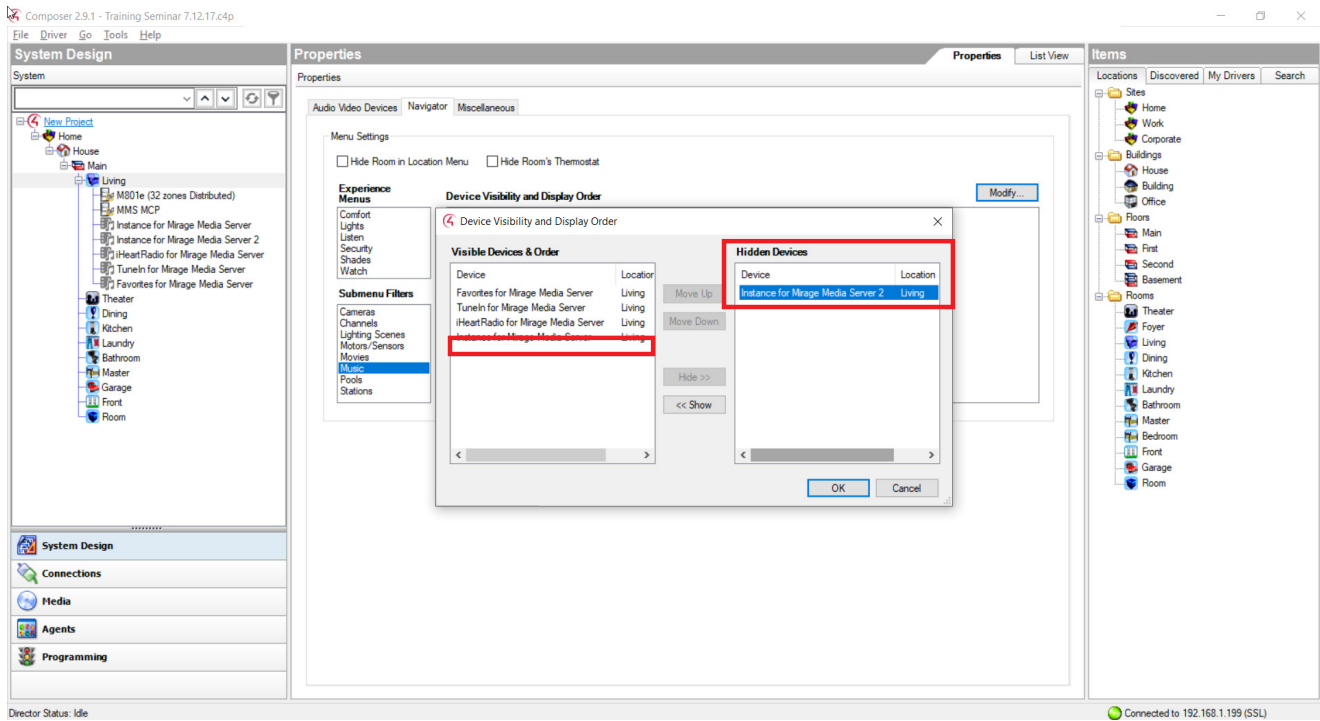
- System Design View:** The 'Living' room is selected in the tree view.
- Properties Window:** The 'Navigator' tab is selected, and the 'Music' filter is chosen under 'Submenu Filters'.
- Device Visibility and Display Order:** The 'Modify...' button is highlighted.

The 'Device Visibility and Display Order' window contains the following table:

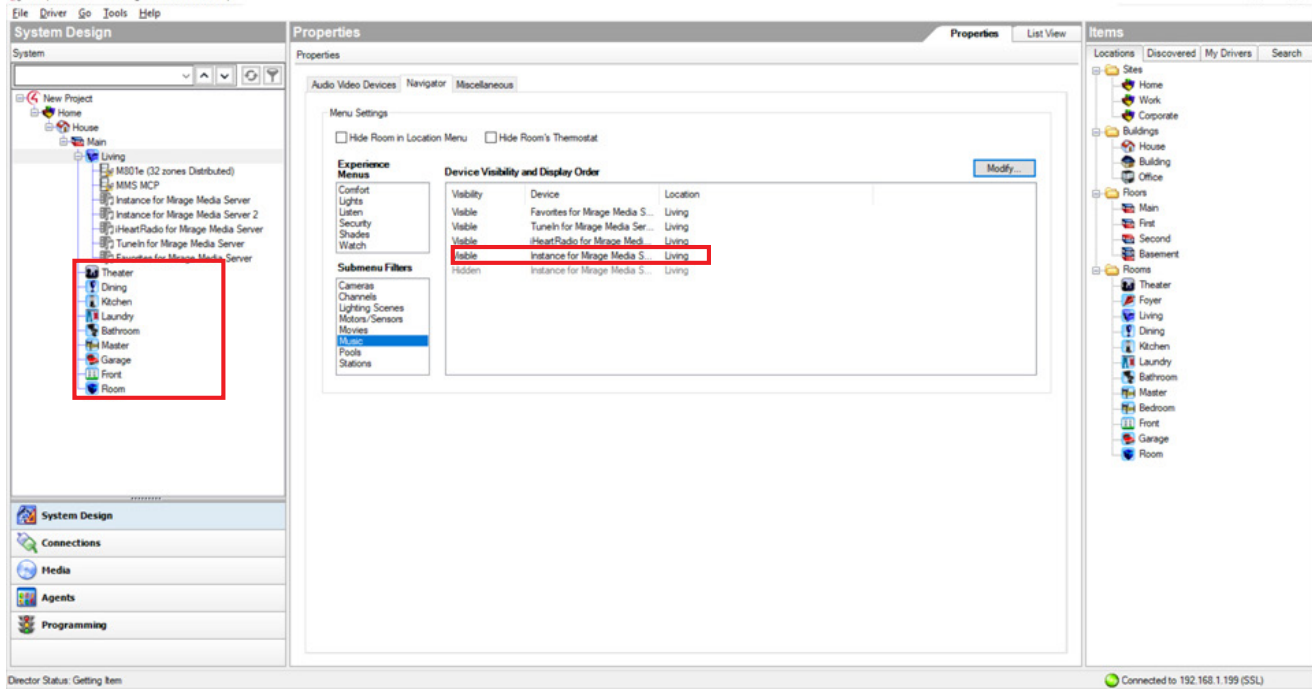
Visibility	Device	Location
Visible	Favorites for Mirage Media S...	Living
Visible	TuneIn for Mirage Media Ser...	Living
Visible	iHeartRadio for Mirage Medi...	Living
Visible	Instance for Mirage Media S...	Living
Visible	Instance for Mirage Media S...	Living



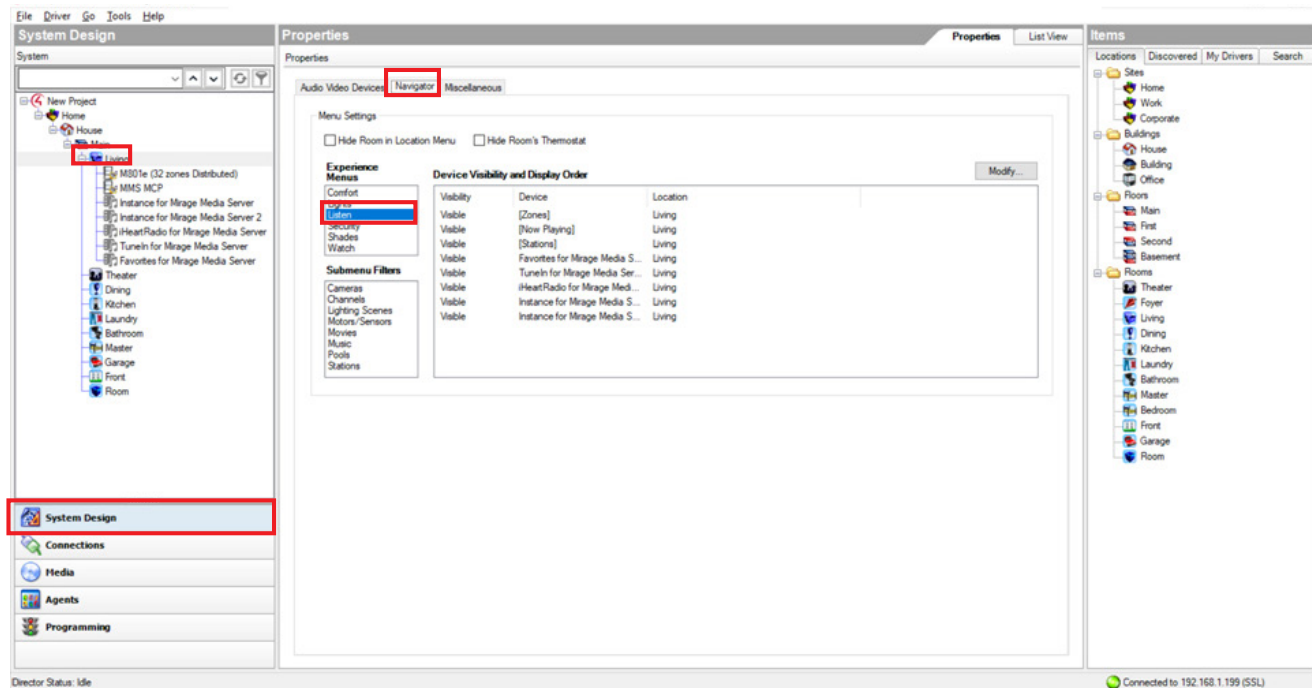
In the pop up window, hide the instances which the room should not be using. Only leave visible the instance that will be designated to the room. Make sure this visible instance is hidden in every other room otherwise the other rooms will have access to it.



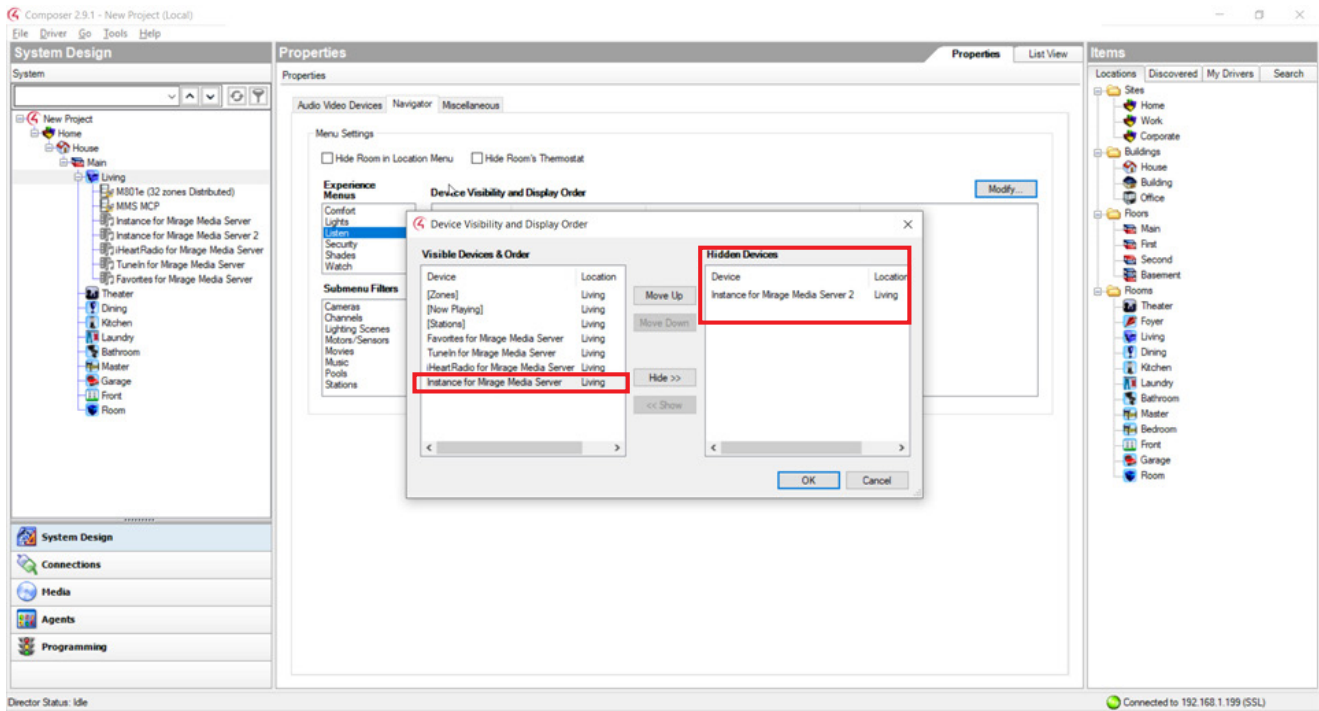
Once customization is completed, go through all the MCP actions starting from **Update Rooms** to ensure they are properly set.



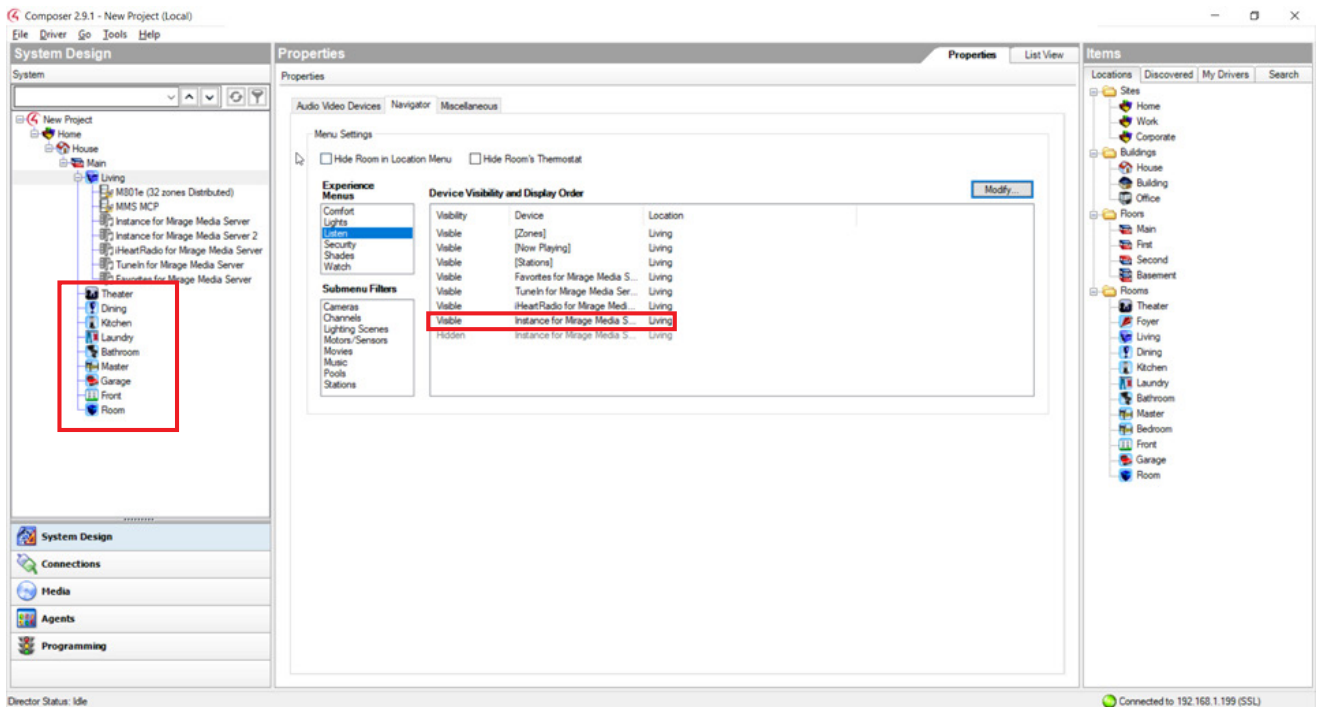
It is possible to hide the Instance drivers from the navigator panels. This is only recommended when all Instances are available in all rooms. To hide Instance drivers from the navigator panels, go to the Navigators tab in Composer and select **Listen** from the **Experience Menus**. Next, select the **Modify** button from the **Device Visibility and Display Order** window.



In the pop up window, hide all the instances so they do not appear in the Navigator panel.



Complete this process for every room so the instances will always be hidden.



## Technical Support

If you require further assistance with configuring the Control4 Driver Suite for the Mirage Media Server, please contact Technical Support at (866) 838-5052, or email [techsupport@snapav.com](mailto:techsupport@snapav.com). You can also visit the Autonomic Knowledgebase (<http://www.autonomic-controls.com/kb>) for troubleshooting information and access to submitting a support ticket.