

CR-CDI-1000/2000-LSCAPE AMPLIFIER

OVERVIEW

The following information will guide the installer through updating the firmware in a Crown® CR-CDi-1000/2000-LSCAPE Amplifier. Please read the entire document before completing the update.

If you have any questions after reading this document, please contact SnapAV Technical Support.

Contacting Technical Support

Phone: (866) 838-5052 (704) 909-5229

Email: TechSupport@SnapAV.com

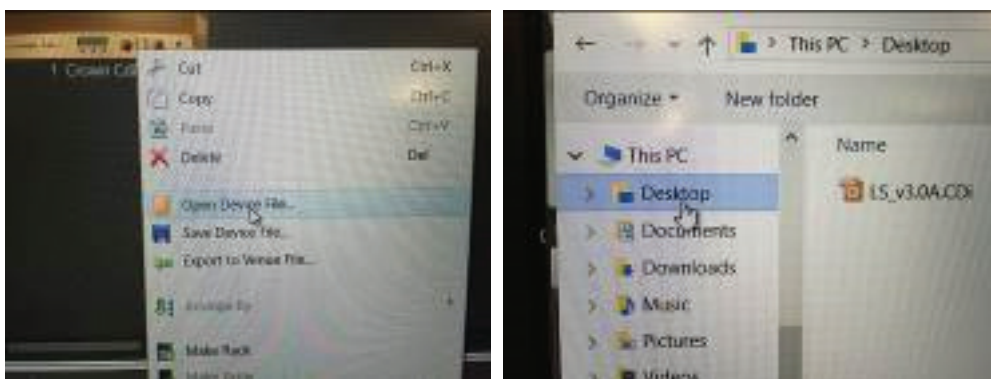
BEFORE BEGINNING

Make sure the following items are close at hand for setup:

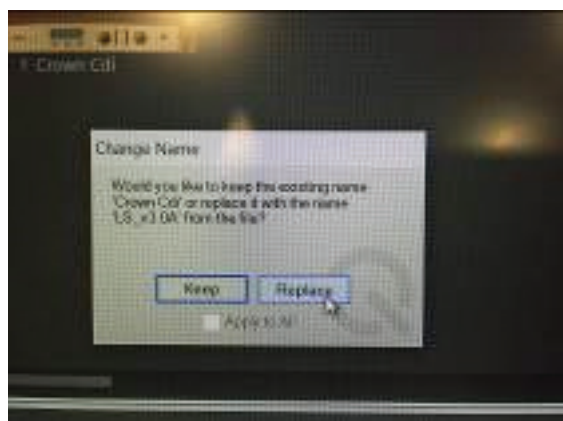
- Computer with System Architect installed
- Firmware saved to Desktop
- Amp Power Cord
- USB Cable

UPDATING FIRMWARE

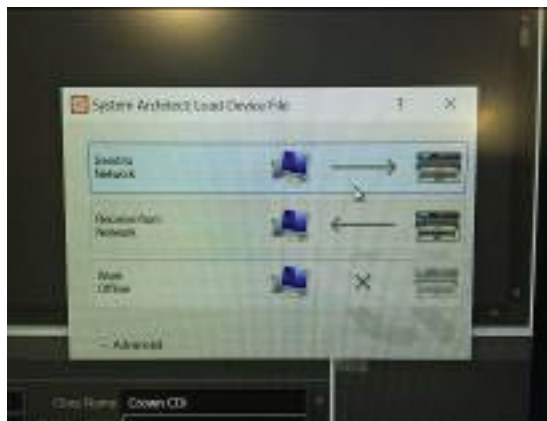
1. Save the device file to be loaded onto the amplifier to the PC desktop.
2. Plug the power cord into the amp and power on.
3. Connect the USB cable to the PC with System Architect loaded. Once connected, in the amplifier icon should appear in System Architect after a few seconds.
4. Right click the amplifier icon and select "Open Device File". Navigate to the new device file previously to the desktop and open.



5. The "Change Name" window appears, select "Replace".



6. The "Load Device File" window will appear, select "Send to Network". The device file will load.



7. The amplifier display will show "USER". Push Select/Enter on the front of the unit.
8. PRESET will blink. Push Select/Enter again, and USER will display again with PRESET blinking on the left side.
9. Push the Next/Down button four times to display the new firmware, for example "LS8SAT5".
10. Push the Previous/Up button twice to display "LS4SAT5" and push "Select/Enter". The display should show entry selected. If you do not see the two display settings, the firmware did not install correctly. Repeat above steps 3 through 7.
11. Power off the amplifier, unplug the power and USB cable.
12. It is important to delete the amplifier icon from System Architect right clicking on the amplifier icon and selecting delete.

