



## OWNER'S MANUAL

## SOUNDBAR DISPLAY MOUNT ADAPTER

**SM-SBAR-BKT-UNIV**

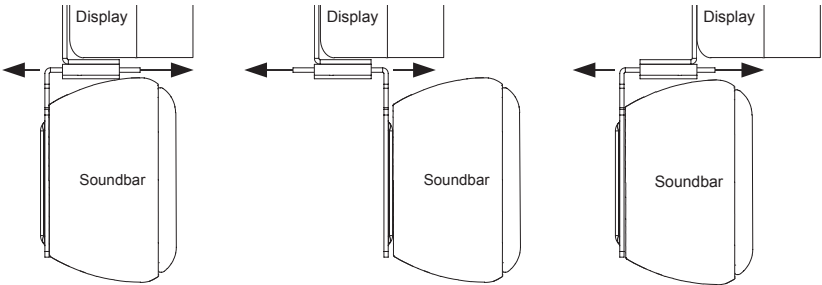


ADJUSTING THE BRACKET

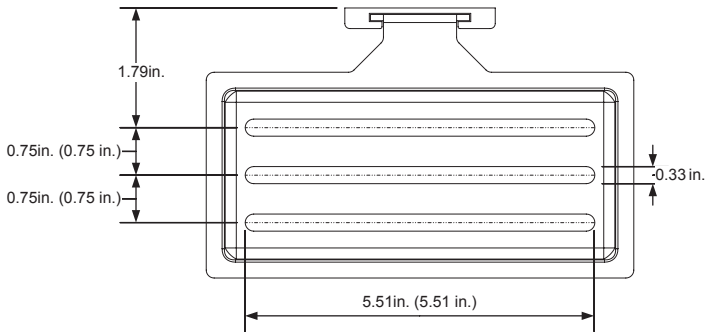
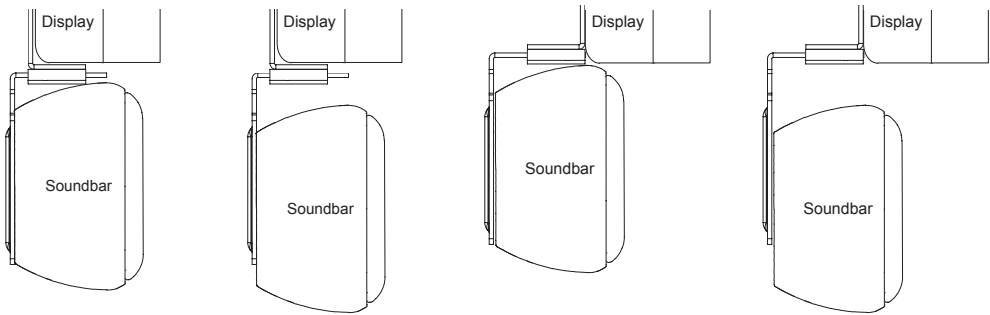
The SM-SBAR-BKT-UNIV can be adjusted to allow for the desired positioning of a soundbar for depth and height relative to the display. This is achieved by a sliding Tray bracket and by changing the orientation of the Hook bracket.

**NOTE:** This Strong™ bracket has been designed to work with any Episode® Soundbar products but can be used with any other manufacturers' models.

DEPTH ADJUSTMENTS



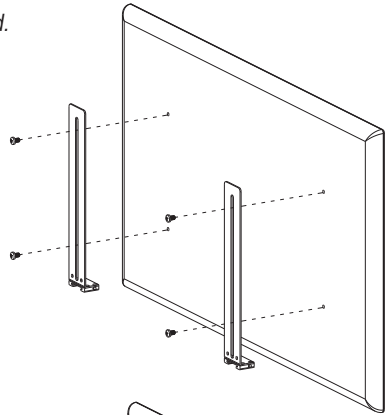
HEIGHT ADJUSTMENTS



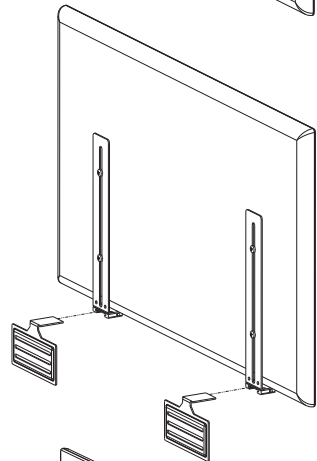
## ASSEMBLY STEPS

1. Install the Hook Brackets to the rear of the display. Once installed, the brackets will be between the display and the wall mount.

**NOTE:** On larger displays only the bottom screw will be used.

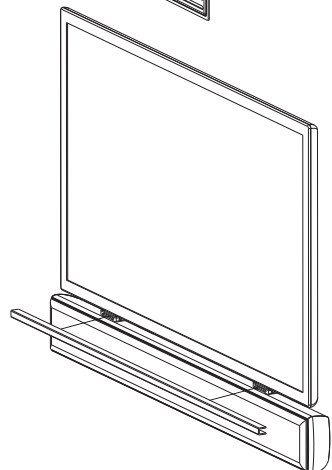


2. Insert the Tray brackets into the rear of the Hook Brackets. Keep the set screws loose to allow for adjusting the depth of the soundbar once installed in step 3.

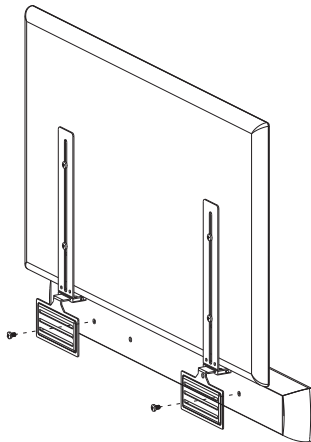


3. Cut the provided Trim piece (optional) to the width of the attached sound bar. Use as needed.

4. Secure the Trim piece (optional) to the soundbar via the adhesive on the Trim piece.



5. Attach the Soundbar to the installed Tray brackets and secure with the screws provided with the Episode™ soundbar.
6. Adjust the soundbar to the desired depth in relation to the display.
7. Tighten the set screw for each tray bracket. If using a non Episode™ soundbar, verify that screws have been provided by the manufacturer.



## LIFETIME LIMITED WARRANTY



All Strong™ products have a Lifetime Limited Warranty. This warranty includes parts and labor repairs on all components found to be defective in material or workmanship under normal conditions of use. This warranty shall not apply to products which have been abused, modified or disassembled. Products to be repaired under this warranty must be returned to SnapAV or a designated service center with prior notification and an assigned return authorization number (RA).

For Technical Support : 1.866.838.5052

