

## Introduction

Follow the steps below to upgrade a Wattbox IP device to the latest firmware version.

## Before Beginning

Visit [www.SnapAV.com](http://www.SnapAV.com) and download the following.

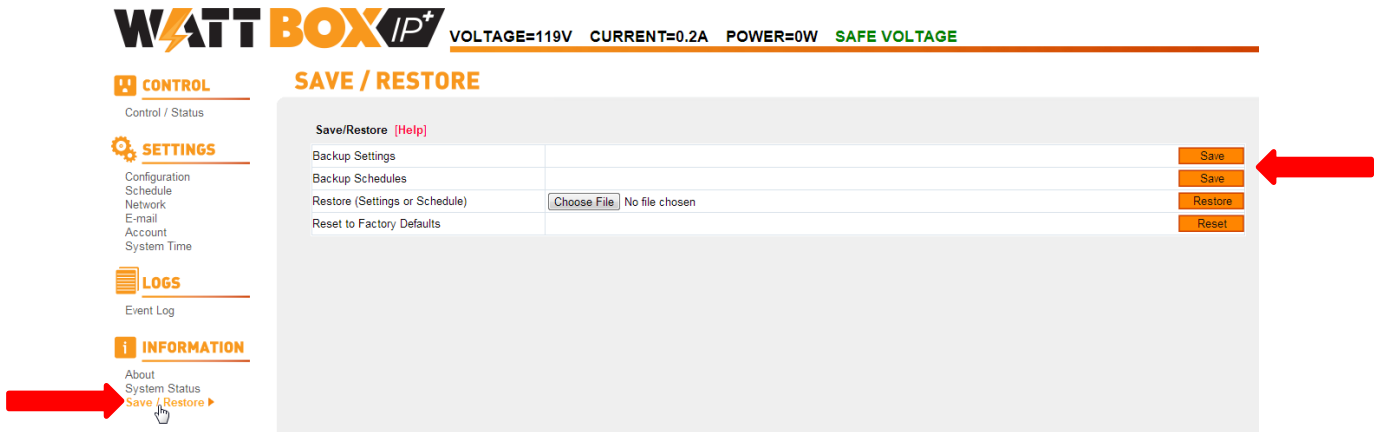
- Latest version of Wattbox firmware
- Latest version of the Wattbox Utility
- Latest version of the Wattbox Web Interface Users Guide

## Update Instructions

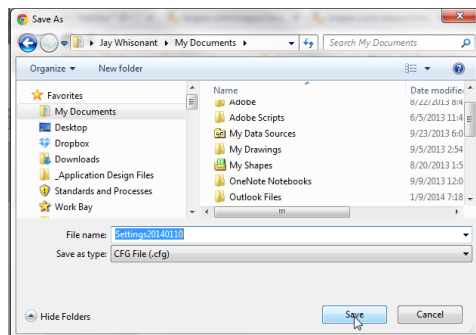
**Note: Updating firmware removes any configured settings on the Wattbox. Back up the settings through the web interface before updating.**

1. Verify that all Wattbox IP devices are connected to the network and that everything is powered on.
2. If Wattbox devices have already been configured, backup all settings prior to proceeding. Updating firmware will erase all settings from the device.

These directions explain how to save the cfg file. Restoring the file to the unit is detailed at the end of the firmware update instructions.

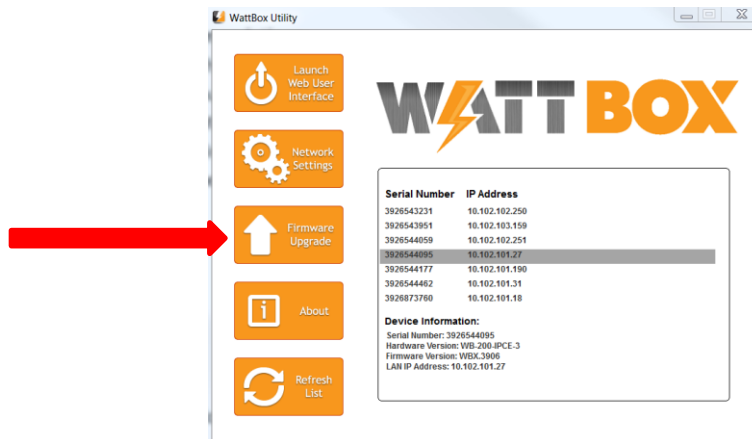


- A. Log into the Wattbox unit web interface and click to the “Save/Restore” screen from the left-bar menu.
- B. Click the “Save” button for the schedule or configuration file, and use the dialog box to select a location for the file on your PC.



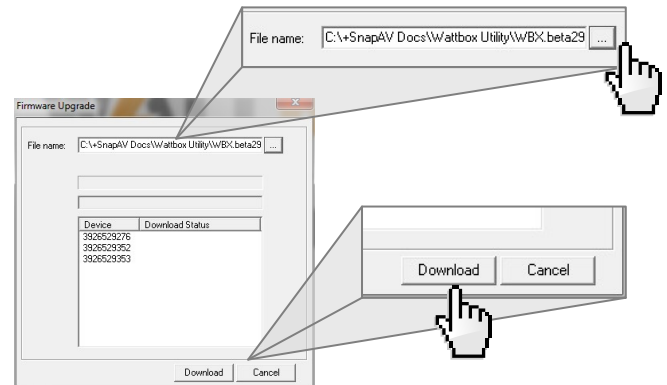
- C. This will Save your settings to your downloads folder

3. Run the Wattbox Utility on your PC.
4. Click the device to update in the list. Hold down the control button to select multiple devices for simultaneous update.



5. Click “Firmware Upgrade” in the left-bar menu to open the Firmware Upgrade menu. Then, complete these steps to complete the update.

- A. Click on the “...” box to the right of the “File Name” field to select a file for download.
- B. Navigate to the saved firmware file location and click “Open”.
- C. Click on “Download” to start the download process
- D. **DO NOT POWER OFF THE WATTBOX DURING THE INSTALLATION PROCESS!**
- E. **DO NOT CLOSE THE FIRMWARE UPGRADE WINDOW!**
- F. **DO NOT POWER OFF NETWORK EQUIPMENT OR THE PC UNTIL THE UPGRADE PROCESS IS COMPLETE!**
- G. When “Downloaded Successfully” appears next to each Wattbox in the window, click the Cancel button to close the Firmware Upgrade window.



6. Restore saved configuration and schedule files to the Wattbox (if they were saved before the update):
  - A. Return to the Save/Restore menu in the Wattbox web interface. If the device is not found at the original IP address, it may be necessary to find the device again using the Wattbox Utility.
  - B. Click “Browse” on the Save / Restore Screen and locate the saved configuration or schedule file.

Backup Settings		Save
Backup Schedules		Save
Restore (Settings or Schedule)	C:\Users\john.hatcher\Downloads\Settings20130919 (1) Browse...	Restore
Reset to Factory Defaults		Reset

- c. Click “Restore”. The settings will be returned to the Wattbox device.

7. The firmware update is now complete.