



TRF-ZW1 Z-Wave Extender

Owner's Manual



TRF-ZW1 Z-Wave Extender Owner's Manual
© 2013 Universal Remote Control, Inc.

The information in this Owner's Manual is copyright protected. No part of this manual may be copied or reproduced in any form without prior written consent from Universal Remote Control, Inc.

UNIVERSAL REMOTE CONTROL, INC. SHALL NOT BE LIABLE FOR OPERATIONAL, TECHNICAL OR EDITORIAL ERRORS/OMISSIONS MADE IN THIS MANUAL.

The information in this Owner's Manual may be subject to change without prior notice.

URC - Control the Experience is a registered trademark of Universal Remote Control, Inc.

Total Control is a registered trademark of Universal Remote Control, Inc.

All other brand or product names are trademarks or registered trademarks of their respective companies or organizations.



500 Mamaroneck Avenue, Harrison, NY 10528
Phone: (914) 835-4484 Fax: (914) 835-4532

Congratulations!

Thank you for purchasing URC's TRF-ZW1 Z-Wave Extender for the Total Control system. The Z-Wave Extender receives commands from a Total Control system and sends those commands over the Z-Wave network to third-party products such as door locks, lights etc. Some compatible third-party products are capable of sending metadata back to a Total Control user interface when using URC's two-way modules.

Features and Benefits

- **Control Z-Wave products with your Total Control system**
Your Total Control system receives commands, converts them to Z-Wave signals and then transmits the signals to your products. Also, while at home or away, control your Z-Wave products using URC's mobile apps from your mobile devices.
- **Monitor compatible Z-Wave products**
While using applicable URC two-way modules, monitor Z-Wave products with metadata feedback on a Total Control remote, keypad, or mobile device.
- **Pairing just got easier**
The included batteries allow for roaming and easier pairing of hard-to-reach Z-Wave products installed throughout the home.
- **Remote Device Management & Configuration**
Access the TRF-ZW1's user interface via its online site whether you are at home or away. Register a free account for basic control and Z-Wave configurations from home, or subscribe to a yearly account to access the TRF-ZW1 from anywhere else.

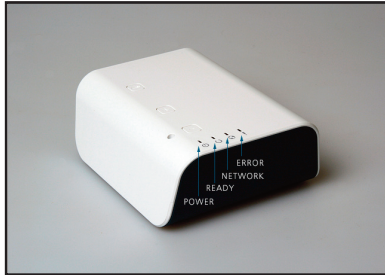
Parts Guide

The TRF-ZW1 Extender includes:

1 - TRF-ZW1 Extender
1 - Power Adaptor
1 - Owner's Manual

1 - Ethernet Cable
4 - AA Batteries

TRF-ZW1 Top Panel Descriptions



Power LED: Illuminates to indicate the TRF-ZW1 is powered.

Ready: Illuminates to indicate it is ready to receive data.

Network: Illuminates to indicate communication to the home network.

Error: Please consult the troubleshooting section of the URC MIOS documentation site. <http://urc-docs.mios.com/doc.php>

Battery button: This button is used to enter battery pairing mode while pairing devices in various locations.

1. Disconnect the TRF-ZW1 from the network and power cable.
2. Insert 4 AA batteries into the bottom of the unit.
3. Press and Hold the “Battery” icon on the top of the unit for 5 seconds.
 - The Power light will start to flash Blue for 30 seconds.
 - After 10 more seconds the ready light will start to flash amber. By default the unit goes into Pairing (Include) mode automatically.

+ (pairing button): Stated above the TRF-ZW1 defaults to Pairing (Include) when battery power is activated.

1. The Ready light will slowly flash to show it is ready to pair a device.
2. Go to the device you wish to pair and perform its instructed pairing method.
3. The ready light will quickly start flashing for 2 seconds to verify the device has been paired.
4. You can continue to pair devices while in pairing mode.
5. When you are done pairing (including) devices press the [+] button to save.
 - The Ready light will not flash for a moment while saving.
6. To turn off Battery mode press and hold the [+] button for 5 seconds.

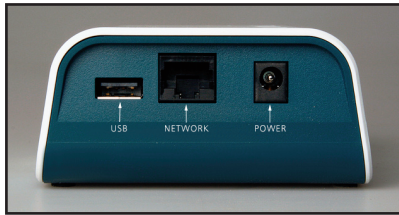
7. Connect the TRF-ZW1 back to the network and power cables then login to the TRF-ZW1 programming software. You will find the items add to the “No Rooms” section.

– **(un-pairing button):** After the TRF-ZW1’s battery mode is activated and the ready light is flashing for pairing (include) you will press the [-] on the unit. When the [-] button is pressed the ready light will flash slightly faster in un-pairing (exclude) mode, then in pairing (include) mode).

1. Go to the device you wish to un-pair (exclude) from the system and perform the devices instructed in the un-pairing method.
2. The Ready light will quickly flash for 2 seconds to verify the item has been un-paired (excluded).
3. When you are done un-pairing devices press the [-] to save the changes.
 - The Ready light will pause from flashing for a moment to confirm.
4. To turn off battery mode press and hold the [+] for 5 seconds.
5. Connect the TRF-ZW1 back to the network and power cables then login to the TRF-ZW1 programming software. You will find the items removed are no longer in the program.

Reset button: WARNING!!! Pressing this button will set the unit back to factory settings. Press and hold the recessed button adjacent to the (-) unpair button for 10 seconds until the lights turn off.

TRF-ZW1 Rear Panel Descriptions



USB: For future use.

Network: Connect the supplied Ethernet cable to the home network.

Power: 12V power receptacle.

Installation



- 1 Connect the supplied Ethernet cable to the TRF-ZW1's network port and to an open connection port on your router or network switch.
- 2 Connect the 12V power adapter to the TRF-ZW1's power port and plug into an electrical outlet.



- 3 The LED indicators, Power, Ready and Network illuminate when powered. Wait for the LEDs to remain lit; this may take up to 2 minutes. When the lights are solid, the TRF-ZW1 is properly connected to the network.
- 4 Open a browser and type in **<https://urc.mios.com>**.
- 5 Create an account for access to the TRF-ZW1 Dashboard. The online interface will discover the TRF-ZW1 and open its Dashboard. Refer to the ***TRF-ZW1 Dashboard and Account Setup*** section for further details.

TRF-ZW1 Dashboard and Account Setup

The TRF-ZW1 Dashboard is a user-friendly interface used to pair and configure Z-Wave devices to the TRF-ZW1. It is also used for advanced configuration settings and device control throughout your home or office space. Creating an account and setting up your devices via the Dashboard is REQUIRED to enable the TRF-ZW1 to work in conjunction with your Total Control system. The Dashboard is accessible by logging into <https://urc.mios.com> and offers two different accounts: free and yearly subscription.

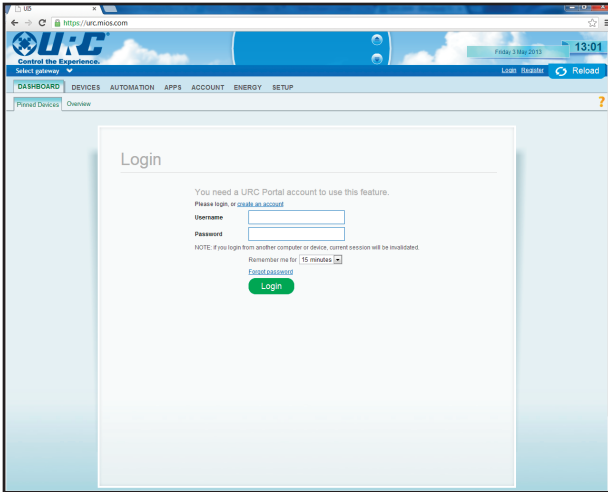
Free account: Connecting to the TRF-ZW1 allows for advanced device configuration from the local network via a PC at no additional charge. This account option allows you to:

- Add devices
- Configuration of devices
- Edit scenes
- View scenes
- View dashboard
- Basic control

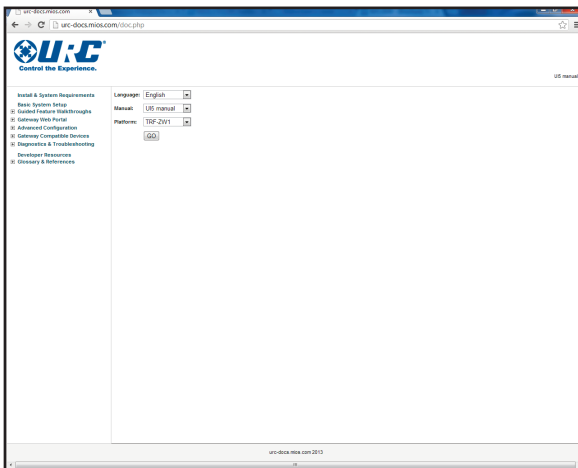
Yearly Subscription: Signing up for a TRF-ZW1 Dashboard account with a yearly subscription provides access to your TRF-ZW1's advanced configuration settings and device control from a remote location via the internet. No matter where you are, such as your office or on vacation, you can monitor and open a door and allow access to your home. This account option provides:

- Off-site access (outside local area network)
- Off-site control via dashboard
- Device configuration
- Adding and deleting a device
- Managing scenes
- Adding multiple users
- Email and SMS notifications

Note: The account offerings are subject to change.



Visit <https://urc.mios.com/> to register for an account and view the TRF-ZW1's Dashboard.



For instructions on how to use the dashboard, please refer to, <http://urc-docs.mios.com/doc.php>

Limited Warranty Statement

1. Limited Warranty and Disclaimers

Universal Remote Control, Inc. ("URC") warrants that the URC equipment shall be free from defects in material and workmanship under normal usage for one (1) year from purchase when such is purchased from URC.

This limited warranty is valid only in the United States of America. URC warrants that the software will substantially conform in any material respect to its functional specifications at the time of delivery. URC SHALL NOT BE LIABLE FOR OPERATIONAL, TECHNICAL OR EDITORIAL ERRORS AND/OR OMISSIONS MADE IN THE URC DOCUMENTATION. URC DOES NOT WARRANT THAT THE URC SOFTWARE IS BUG-FREE OR ERROR FREE OR THAT THERE ARE NO ERRORS/BUGS IN THE URC SOFTWARE.

URC warrants that at the time of purchase the URC equipment and the URC software complied with all applicable regulations and policies of the Federal Communications Commissions ("FCC") regarding electromagnetic interference caused by electronic/computing devices and to the extent that the URC equipment and/or the URC software fails to so comply, URC shall, at its own expense, take all reasonable measures to promptly cause such to comply.

URC equipment purchases from other than an authorized URC dealer or distributor are without warranty.

THIS LIMITED WARRANTY DOES NOT COVER TECHNICAL ASSISTANCE FOR HARDWARE OR SOFTWARE USAGE EXCEPT AS EXPRESSLY PROVIDED FOR HEREIN, THE EQUIPMENT, SOFTWARE AND DOCUMENTATION OF URC ARE SUPPLIED "AS IS" WITHOUT ANY WARRANTY, EXPRESS, STATUTORY OR IMPLIED, OF ANY KIND. TO THE MAXIMUM EXTENT PERMITTED BY APPLICABLE LAW, URC EXPRESSLY DISCLAIMS ALL WARRANTIES, EXPRESS, STATUTORY OR IMPLIED, INCLUDING BUT NOT LIMITED TO THE WARRANTIES OF MERCHANTABILITY AND FITNESS FOR A PARTICULAR PURPOSE. URC DOES NOT WARRANT, GUARANTEE, OR MAKE ANY REPRESENTATIONS REGARDING THE USE OF, OR THE RESULTS OF THE USE OF, THE EQUIPMENT, SOFTWARE OR DOCUMENTATION IN TERMS OF CORRECTNESS, ACCURACY, RELIABILITY OR OTHERWISE.

EXCEPT AS EXPRESSLY PROVIDED FOR HEREIN, TECHNICAL SERVICES ARE SUPPLIED "AS IS", WITHOUT ANY WARRANTY, EXPRESS, STATUTORY OR IMPLIED, OF ANY KIND. TO THE MAXIMUM EXTENT PERMITTED BY APPLICABLE LAW, URC EXPRESSLY DISCLAIMS ALL WARRANTIES, EXPRESS, STATUTORY OR IMPLIED, INCLUDING BUT NOT LIMITED TO THE WARRANTIES OF QUALITY OR REASONABLE SKILL AND CARE, OR OUTCOME OR RESULTS.

WITHOUT IN ANY WAY LIMITING THE GENERALITY OF THE OTHER PROVISIONS HEREIN, WARRANTY DOES NOT COVER: (I) DAMAGE FROM MISUSE, NEGLIGENCE OR ACTS OF NATURE, (II) MODIFICATIONS, (III) INTEGRATION WITH THIRD PARTY CONTENT (IV) BEYOND THE WARRANTY PERIOD AND/ OR FAILURE TO FOLLOW URC WARRANTY CLAIM PROCEDURE.

The warranty limitations and warranty disclaimers may not apply to end user in whole or in part, where such are restricted or excluded by applicable law and such shall apply to the maximum extent permitted by applicable law.

In the event of any warranty claim, URC will, at its sole option, repair the URC equipment using new or comparable rebuilt parts, or exchange the URC equipment for new or rebuilt equipment. **In the event of a defect, these are the end user's exclusive remedies.**

All the URC equipment returned for service, exchange or repair require an RGA number. To obtain an RGA number, you must complete a Return Request Form which you may obtain by calling (914) 835-4484 or contacting URC at returnrequest@universalremote.com. To obtain warranty service, end user must deliver the URC equipment, freight prepaid, in its original packaging or packaging affording adequate protection to URC at 420 Columbus Avenue, Valhalla, NY 10595. It is end user's responsibility to backup any macro programming, artwork, software or other materials that may have been programmed into the unit. It is likely that such data, software, or other materials will be lost during service and URC will not be responsible for any such damage or loss. A dated purchase receipt, bill of sale, installation contract or other verifiable proof of purchase is required. For the URC equipment support and other important information, please visit URC's website available at www.universalremote.com or call the Customer Service Center at (914) 835-4484.

This limited warranty only covers the URC equipment issues caused by defects in material or workmanship during ordinary consumer use. It does not cover product issues caused by any other reason, including but not limited to product issues due to commercial use, acts of God, third-party installation, misuse, limitations of technology, or modification of or to any part of the URC equipment. This limited warranty does not cover the URC equipment sold as used, as is, refurbished, so called "B stock" or consumables (such as batteries). This limited warranty is invalid if the factory applied serial number has been altered or removed from the URC equipment. **This limited warranty specifically excludes the URC equipment sold by unauthorized resellers.**

With the exception of URC's IR-only, broad-based consumer remotes, none of URC's PC programmable remotes or any of our Total Control® whole-house equipment are authorized for online internet sales. Buying URC's PC programmable remotes or any of our Total Control® whole-house equipment online means buying equipment that does not have a URC's limited warranty. Such equipment is not eligible for URC tech support or software support, either.

2. URC'S Limitations of Liability

IN NO EVENT SHALL URC BE LIABLE FOR INDIRECT, SPECIAL, INCIDENTAL, EXEMPLARY, PUNITIVE OR CONSEQUENTIAL DAMAGES OF ANY KIND OR LOSS OF PROFITS OR BUSINESS OPPORTUNITY, EVEN IF URC IS ADVISED OF THE POSSIBILITY OF SUCH DAMAGES.

IN NO EVENT SHALL URC BE LIABLE FOR LOSS OF OR DAMAGE TO DATA, COMPUTER SYSTEMS OR COMPUTER PROGRAMS. URC'S LIABILITY, IF ANY, FOR DIRECT DAMAGES OF ANY FORM SHALL BE LIMITED TO ACTUAL DAMAGES, NOT IN EXCESS OF AMOUNTS PAID BY END USER FOR THE URC EQUIPMENT.

IN NO EVENT SHALL URC BE LIABLE FOR ANY EVENTS BEYOND ITS CONTROL, INCLUDING ANY INSTANCE OF FORCE MAJEURE. IN NO EVENT SHALL URC BE LIABLE FOR THE ACTS OR OMISSIONS OF END USER OR ANY THIRD PARTY.

THE LIMITATIONS OF LIABILITY MAY NOT APPLY TO END USER IN WHOLE OR IN PART, WHERE SUCH ARE RESTRICTED LIMITED OR EXCLUDED BY APPLICABLE LAW AND SUCH SHALL APPLY TO THE

MAXIMUM EXTENT PERMITTED BY APPLICABLE LAW.

URC SHALL NOT BE HELD RESPONSIBLE FOR THE STATEMENTS MADE BY OTHERS.

SOME STATES OR JURISDICTIONS DO NOT ALLOW THE EXCLUSION OR LIMITATION OF INCIDENTAL OR CONSEQUENTIAL DAMAGES, OR ALLOW LIMITATIONS ON HOW LONG AN IMPLIED WARRANTY LASTS, SO THE ABOVE LIMITATIONS OR EXCLUSIONS MAY NOT APPLY TO END USER. THIS LIMITED WARRANTY GIVES END USER SPECIFIC LEGAL RIGHTS AND END USER MAY HAVE OTHER RIGHTS WHICH VARY FROM STATE TO STATE OR JURISDICTION TO JURISDICTION.

End User Agreement

The terms and conditions of the End User Agreement are available at www.universalremote.com/eua.php shall apply.

Federal Communication Commission Interference Statement

This equipment has been tested and found to comply with the limits for a Class B digital device, pursuant to part 15 of the FCC Rules. These limits are designed to provide reasonable protection against harmful interference in a residential installation. This equipment generates, uses and can radiate radio frequency energy and, if not installed and used in accordance with the instructions, may cause harmful interference to radio communications. However, there is no guarantee that interference will not occur in a particular installation. If this equipment does cause harmful interference to radio or television reception, which can be determined by turning the equipment off and on, the user is encouraged to try to correct the interference by one more of the following measures:

- ◆ Reorient or relocate the receiving antenna.
- ◆ Increase the separation between the equipment and receiver.
- ◆ Connect the equipment into an outlet on a circuit different from that to which the receiver is connected.
- ◆ Consult the dealer or an experienced radio/TV technician for help.

Warning!

Changes or modifications not expressly approved by the manufacturer could void the user's authority to operate the equipment.

Note : The manufacturer is not responsible for any Radio or TV interference caused by unauthorized modifications to this equipment. Such modifications could void the user's authority to operate the equipment.

FCC Caution

This device complies with Part 15 of the FCC Rules. Operation is subject to the following two conditions: (1) this device may not cause harmful interference, and (2) this device must accept any interference received, including interference that may cause undesired operation.

Any changes or modifications not expressly approved by the party responsible for compliance could void the authority to operate equipment.

The antenna(s) used for this transmitter must not be co-located or operating in conjunction with any other antenna or transmitter.

Federal Communication Commission (FCC) Radiation Exposure Statement

This remote device is approved as a hand-held and hand-operated only portable (relative to hand) device which is normally operated at 20 cm from a person's body.



500 Mamaroneck Avenue, Harrison, NY 10528

Phone: (914) 835-4484 Fax: (914) 835-4532

www.universalremote.com