

Quick Start Guide

CC Control App



Must have at least (1) **MRX-1** in the system to use the CC Control App



Unlimited **iOS devices** may be used to control the system, with a single setup code purchase



1. Download the **CC Control App** from the App Store
 - a. iPad Version is called: **CC Control HD**
 - b. iPhone/iTouch Version is called: **CC Control**



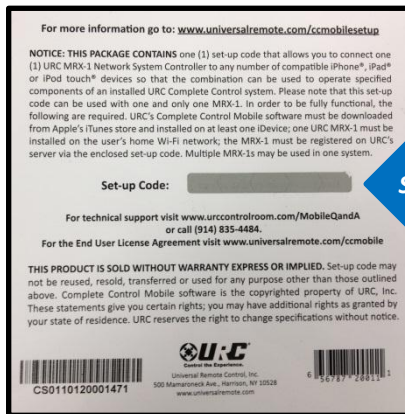
iPad



iPhone/iTouch

Set Up Code

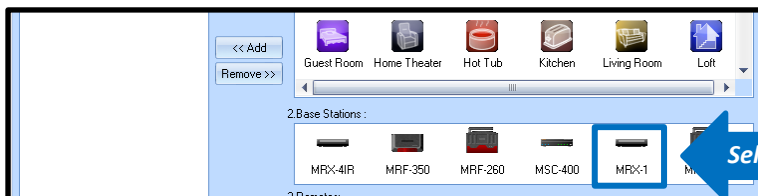
1. Purchase CC Control Set Up Code (card) from your normal purchasing methods (distribution or direct)
2. Scratch-off protective coating to reveal set up code



Set Up Code

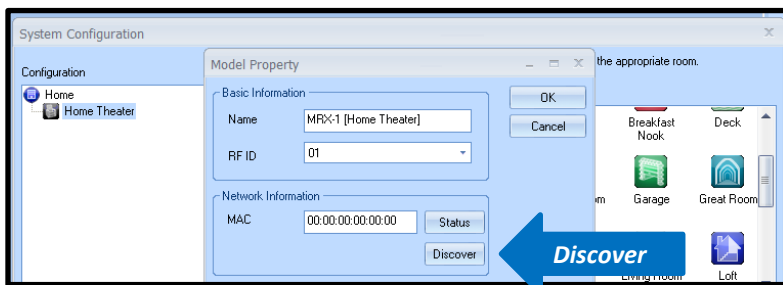
CCP

1. Add MRX-1 to the local area network and to the CCP project
 - a. Add an MRX-1 using the System Configuration window



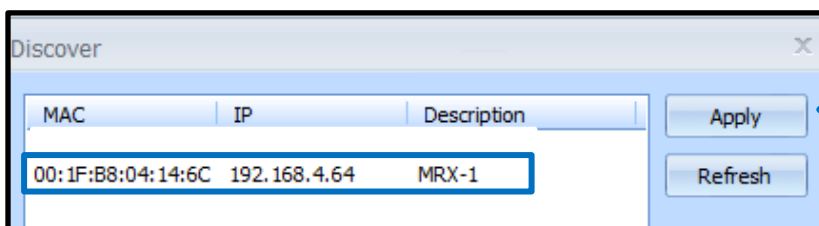
Select MRX-1

- b. Discover the MRX-1 on the network



Discover

- c. Assign the base station to the project



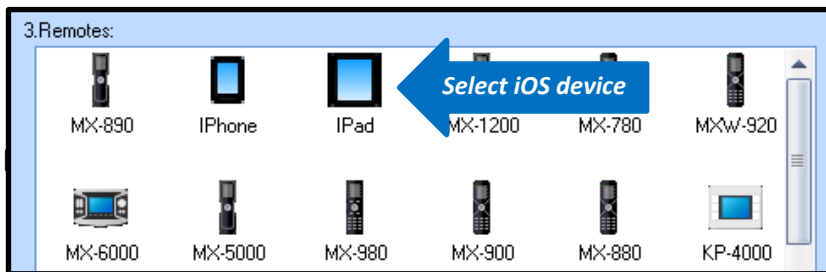
Apply

2. **Add** iOS device to the *local area network* and to the *CCP project*

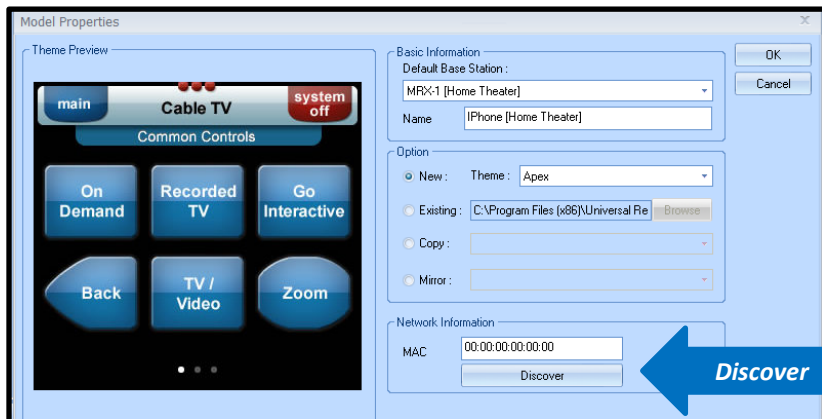
- a. CC Control App **MUST** be running to enable **discovery** of the iOS device



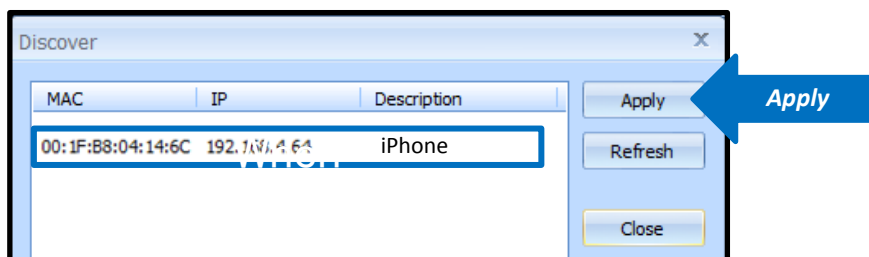
- b. **Add** an iOS device using the System Configuration window



- c. **Discover** the iOS device on the network



- d. **Assign** the iOS device to the project



3. Navigate to the PROPERTIES window of the Home in the System Designer window

a. Enter Network Info (*wired*) →

b. Enter Wi-Fi info (*wireless*) →

c. Enter CC Control iOS code →

Properties
[ROOT] Tim's Home

Name: Tim's Home

Network Info

Subnet mask: 0 . 0 . 0 . 0
Gateway: 0 . 0 . 0 . 0
DNS: 0 . 0 . 0 . 0

Wireless Networks

Mobile Device Setup

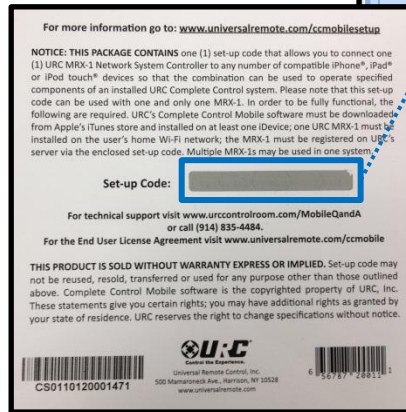
Select the MRX device matching the same MAC used at setup code activation.

Setup Code: **Set Up Code**

Registered MRX:

MAC:

Activate Verify



1. When program is completed, make sure **CC Control** is running prior to download



2. Downloads like a typical graphic remote in CCP

