

This device complies with Part 15 of the FCC and Industry Canada license-exempt RSS standard(s). Operation is subject to the following two conditions:
(1) this device may not cause harmful interference, and (2) this device must accept any interference received, including interference that may cause undesired operation.

FCC NOTE: The manufacturer is not responsible for any radio or TV interference caused by unauthorized modifications to this equipment. Such modifications could void the user's authority to operate the equipment.

NOTE: This equipment has been tested and found to comply with the limits for a Class B digital device, pursuant to Part 15 of the FCC Rules. These limits are designed to provide reasonable protection against harmful interference in a residential installation. This equipment generates, uses and can radiate radio frequency energy and, if not installed and used in accordance with the instructions, may cause harmful interference to radio communications. However, there is no guarantee that interference will not occur in a particular installation. If this equipment does cause harmful interference to radio or television reception, which can be determined by turning the equipment off and on, the user is encouraged to try to correct the interference by one or more of the following measures:

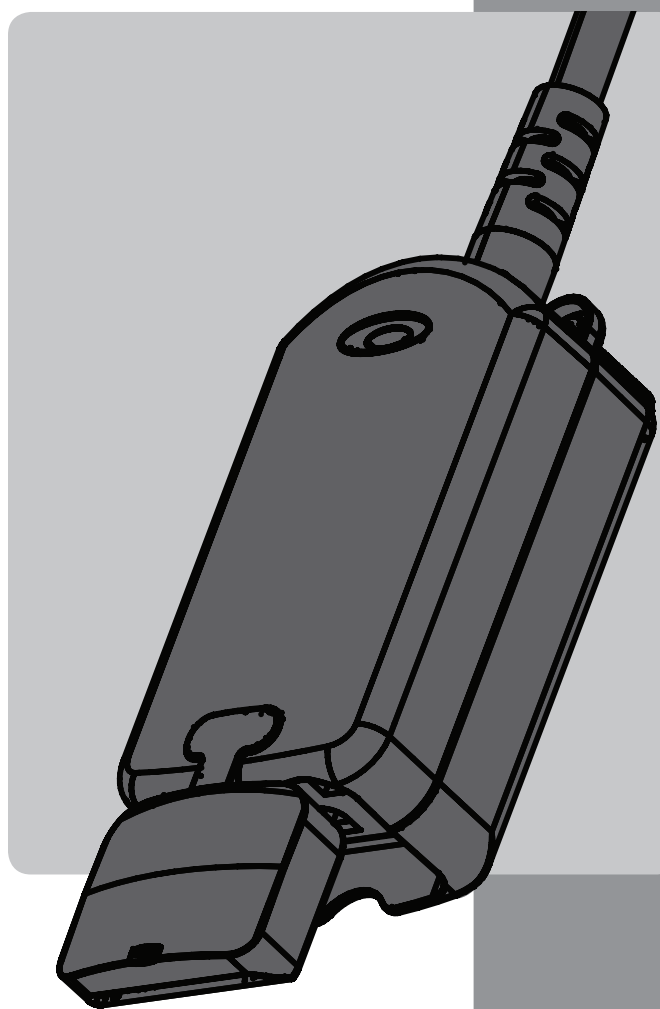
- Reorient or relocate the receiving antenna.
- Increase the separation between the equipment and receiver.
- Connect the equipment into an outlet on a circuit different from that to which the receiver is connected.
- Consult the dealer or an experienced radio/TV technician for help.

Important note: To comply with the FCC RF exposure compliance requirements, no change to the antenna or the device is permitted. Any change to the antenna or the device could result in the device exceeding the RF exposure requirements and void user's authority to operate the device.

FCC — U2Z45604B | IC:
6924A-45604B
Jasco Products Company | Model:
ZW4201 / 14284
CAN ICES-3(B) / NMB-3(B)

All brand names shown are trademarks of their respective owners.

DOC ID 2007
Rev 01



clare™

CVL-OPS-10

ClareVue
Outdoor Plug-In Switch

14284
ZW4201

WARNING

RISK OF FIRE RISK OF ELECTRICAL SHOCK RISK OF BURNS

TO REDUCE THE RISK OF ELECTRIC SHOCK, THIS PRODUCT HAS A GROUNDING TYPE PLUG THAT HAS A THIRD GROUNDING PIN. THIS PLUG WILL ONLY FIT INTO A GROUNDING TYPE POWER OUTLET. IF THE PLUG DOES NOT FIT INTO THE OUTLET, CONTACT A QUALIFIED ELECTRICIAN TO INSTALL THE PROPER OUTLET. DO NOT CHANGE THE PLUG IN ANY WAY.

CONTROLLING APPLIANCES:
EXERCISE EXTREME CAUTION WHEN USING Z-WAVE DEVICES TO CONTROL APPLIANCES. OPERATION OF THE Z-WAVE DEVICE MAY BE IN A DIFFERENT ROOM THAN THE CONTROLLED APPLIANCE. ALSO AN UNINTENTIONAL ACTIVATION MAY OCCUR IF THE WRONG BUTTON ON THE REMOTE IS PRESSED. Z-WAVE DEVICES MAY AUTOMATICALLY BE POWERED ON DUE TO TIMED EVENT PROGRAMMING. DEPENDING UPON THE APPLIANCE, THESE UNATTENDED OR UNINTENTIONAL OPERATIONS COULD POSSIBLY RESULT IN A HAZARDOUS CONDITION. FOR THESE REASONS, WE RECOMMEND THE FOLLOWING:

- DO NOT USE Z-WAVE DEVICES TO CONTROL ELECTRIC HEATERS OR ANY OTHER APPLIANCES WHICH MAY PRESENT A HAZARDOUS CONDITION DUE TO UNATTENDED OR UNINTENTIONAL OR AUTOMATIC POWER ON CONTROL.

NOT FOR USE WITH MEDICAL OR LIFE SUPPORT EQUIPMENT

Z-WAVE ENABLED DEVICES SHOULD NEVER BE USED TO SUPPLY POWER TO, OR CONTROL, THE ON/OFF STATUS OF MEDICAL AND/OR LIFE SUPPORT EQUIPMENT.

Warranty

Clare Controls offers a two (2) year limited warranty on original Clare Controls components, from the date of shipment from Clare Controls. To view complete limited warranty details, including limitations and exclusions, visit www.clarecontrols.com/warranty.

SPECIFICATIONS

Power 120VAC, 60Hz
Signal (Frequency) 908.4 / 916 MHz
Maximum load for the Z-Wave controlled outlet: 600W Incandescent, ½ HP Motor or 1800W Resistive (15A).
Range: Up to 150 feet line of sight between the Wireless Controller and the closest Z-Wave receiver module.
Operating Temperature Range: 32-104° F (0-40° C)
Suitable for outdoor use in damp locations.
Specifications subject to change without notice due to continuing product improvement.

1.

Getting to know your new Z-Wave device

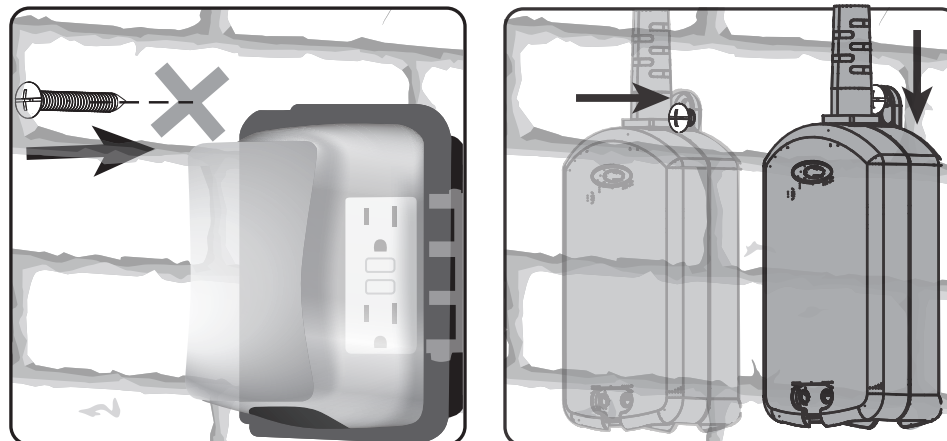
Maximum load for the Z-Wave controlled outlet:
600W Incandescent; 1800W (15A) Resistive or ½ HP Motor

- One Z-Wave controlled grounded outlet for lighting & small appliances
- Remote ON/OFF control via the Z-Wave controller
- Manual ON/OFF control with the manual/program button
- Grounded 3-wire power connection for safety
- Weather and impact resistant housing; suitable for outdoors in a wet or damp conditions
- Integrated outlet cover keeps dirt and debris out when the smart switch is not in use
- This Z-Wave device has advanced features that allow you to customize your experience. These features can only be adjusted by a Z-Wave enabled controller that supports the Z-Wave Configuration command class.

2.

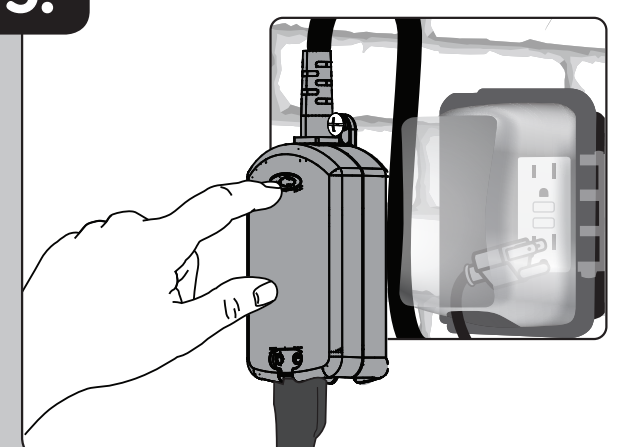
IMPORTANT!

This unit is suitable for outdoor use in damp locations. Do not expose to rain or immerse in water. Install at least 3 feet above ground level with the receptacle pointed down. When used outdoors you should plug the unit into a GFCI receptacle with a receptacle cover rated for outdoor use.



A mounting tab with screw keyhole is located at the top of this unit. Install the included screw in the desired location leaving 3/16" of the screw exposed. Align the mounting tab with the screw head, slide the tab over the screw and let the unit drop down to lock it in place.

3.



NOTE: Plug directly into outlet.
Do not use with extension cords.

The manual/program button on the outdoor switch allows the user to:

Turn the connected lamp ON or OFF. If the outdoor switch is OFF, press and release the button once to turn it ON and vice versa to turn OFF.

4.

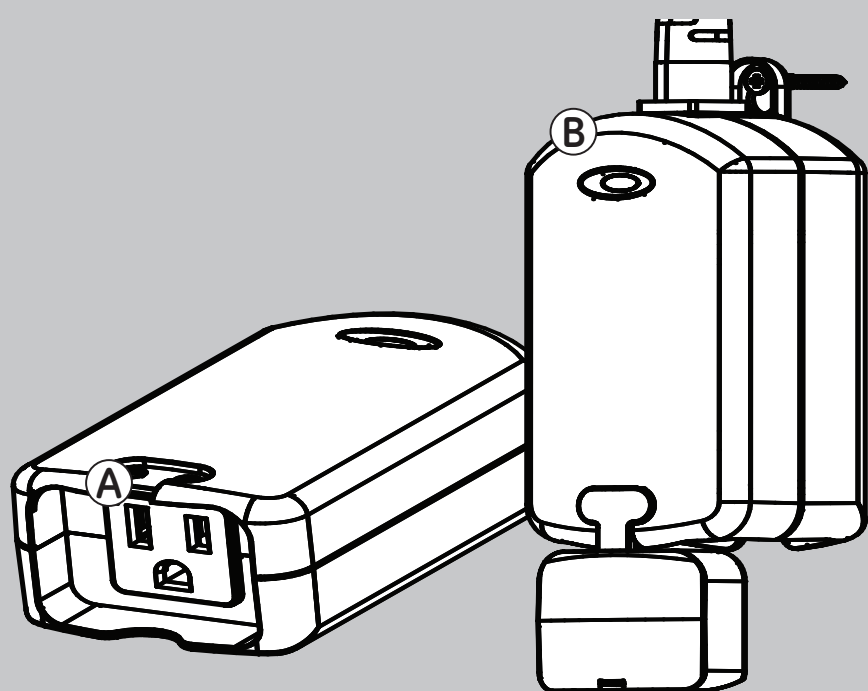
A. Z-Wave controlled outlets

This outlet can remotely turn the connected light or appliance ON/OFF.

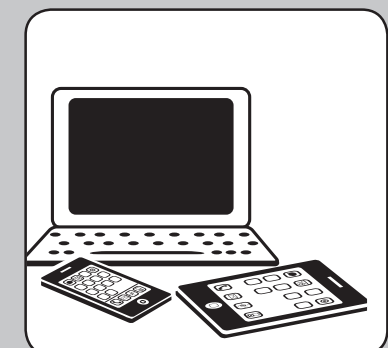
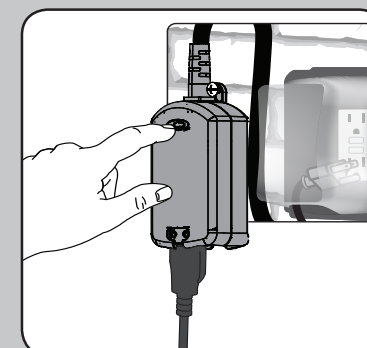
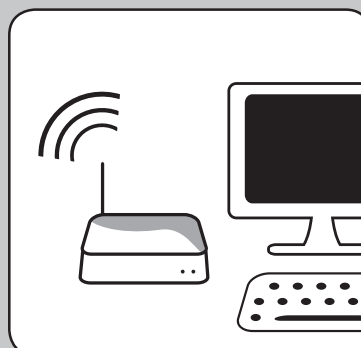
B. Manual/Program button

Single press — turn ON/OFF

Single press — add or remove in Z-Wave network



5.



Adding your device to the Z-Wave network

1. Follow the instructions for your Z-Wave certified controller to add the smart switch to the Z-Wave network.
2. Once the controller is ready to add your outdoor smart switch, single press and release the manual/program button on the smart switch to add it in the network.

Please reference the controller/gateway's manual for instructions.

Now you have complete control to turn your lamp ON/OFF according to groups, scenes, schedules and interactive automations programmed by your controller. If your Z-Wave certified controller features Remote Access, you can now control your lighting from your mobile devices.

To remove and reset the device

1. Follow the instructions for your Z-Wave certified controller to remove a device from the Z-Wave network.
2. Once the controller is ready to remove your device, press and release the manual/program button on the smart switch to remove it from the network.

To return your switch to factory defaults

1. If plugged in, unplug the Switch from the receptacle.
2. Press and hold the button for at least 3 seconds while you plug the switch into a receptacle.

Note: This should only be used in the event your network's primary controller is missing or otherwise inoperable.

This device supports Association Command Class (3 Groups)
• Association Group 1 supports Lifeline, Binary Switch Report
• Association Group 2 supports Basic Set and is controlled by pressing the On or Off button with the local load
• Association Group 3 supports Basic Set and is controlled by double pressing the On or Off button
• Each Association Group supports 5 total nodes



Z-WAVE INTEROPERABILITY

This product can be included and operated in any Z-Wave network with other Z-Wave certified devices from other manufacturers and/or other applications. All non-battery operated nodes within the network will act as repeaters regardless of vendor to increase reliability of the network.