

HSIM (HouseLogix Security Integration Module)

Installation Instructions V1.01 - 20131202

TOOLS REQUIRED:

- Small flat head screw driver
- Standard #22 gauge solid core alarm wire is recommended

INSTALLATION:

1. Security panel prerequisite programming (**not required for DSC or older Vista SE panels**)
 - a. *If you are unfamiliar with programming the security system panel, please refer to the programmers guide or contact your security professional.*
 - b. Since the HSIM functions as a keypad, a new address in the security panel must be programmed before connecting. Here is a list of Honeywell devices that require an address to function. Be sure none of these other devices overlap or share an address:
 - i. Keypads
 - ii. RF Expanders (Wireless)
 - iii. Output Devices - Relays
 - iv. Long Range Radio - Ethernet or GSM devices
 - v. AUI - Advances User Interface
 - vi. Honeywell RIS - Remote Interactive Service - Total Connect
 - c. To add the adapter, enter into programming mode using the installer code. EG: If your installer code is 1234, you would enter 1234800. DO NOT overlap addresses with any of the devices listed above. It is recommended you use the following settings for the HSIM keypad address:
 - i. Device Address: varies, do NOT overlap with existing devices
 - ii. DeviceType: 01 - Alpha Keypad
 - iii. Sound Option: 0
 - iv. Keypad Global: 0
 - v. AUI: 0
 - d. Write the assigned address below:

2. Physical Connection

- a. *It is recommended you contact the monitoring company and put the system in test mode. Once completed, disconnect the power adapter and backup battery from the alarm system.*
- b. Begin by connecting the security wire to the alarm panel keypad bus following the standard color and wiring scheme:

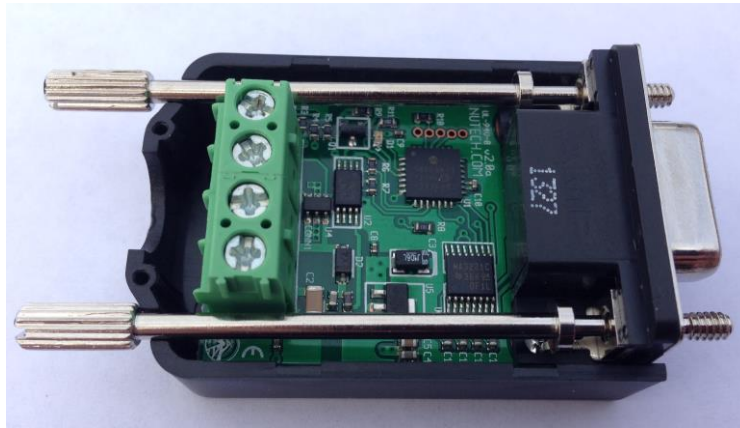
HONEYWELL/ADEMCO

- Power (-): Black
- Power (+): Red
- DI: Green
- DO: Yellow

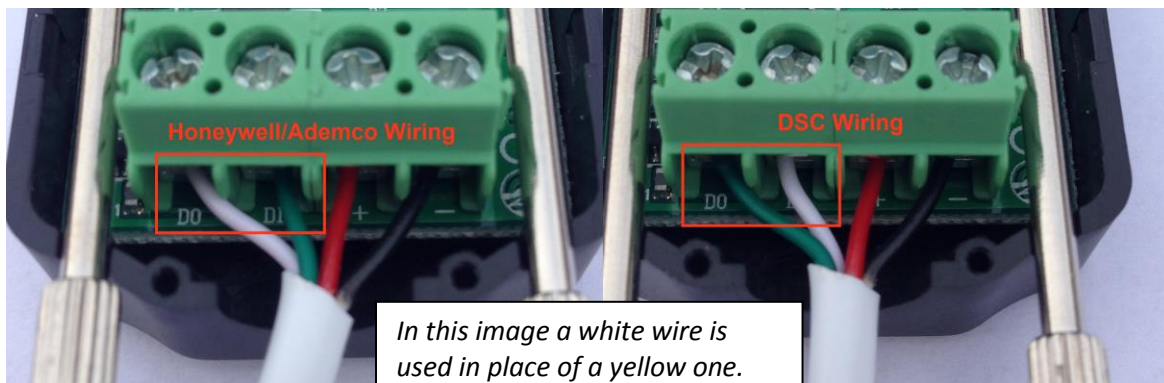
DSC

- Power (-): Black
- Power (+): Red
- DI: Yellow
- DO: Green

- c. Remove the top cover of the module. There you will find a 4 screw terminal block with the associated DO, DI, 12V, and GND labels.



- d. Connect the other end of the security wire to the integration module following the same color scheme. Tighten the terminal blocks and verify the wires are secure.

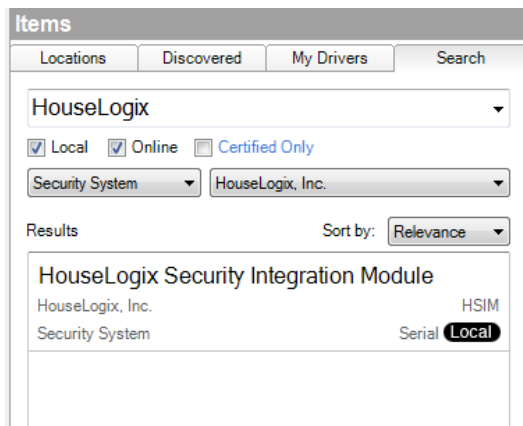


- e. Return power to the alarm panel and connect the battery backup. When power is connected the integration module should have a blinking green LED indicating the unit is receiving messages from the panel.
- f. Attach the top half of the module's cover and plug directly into your controller.

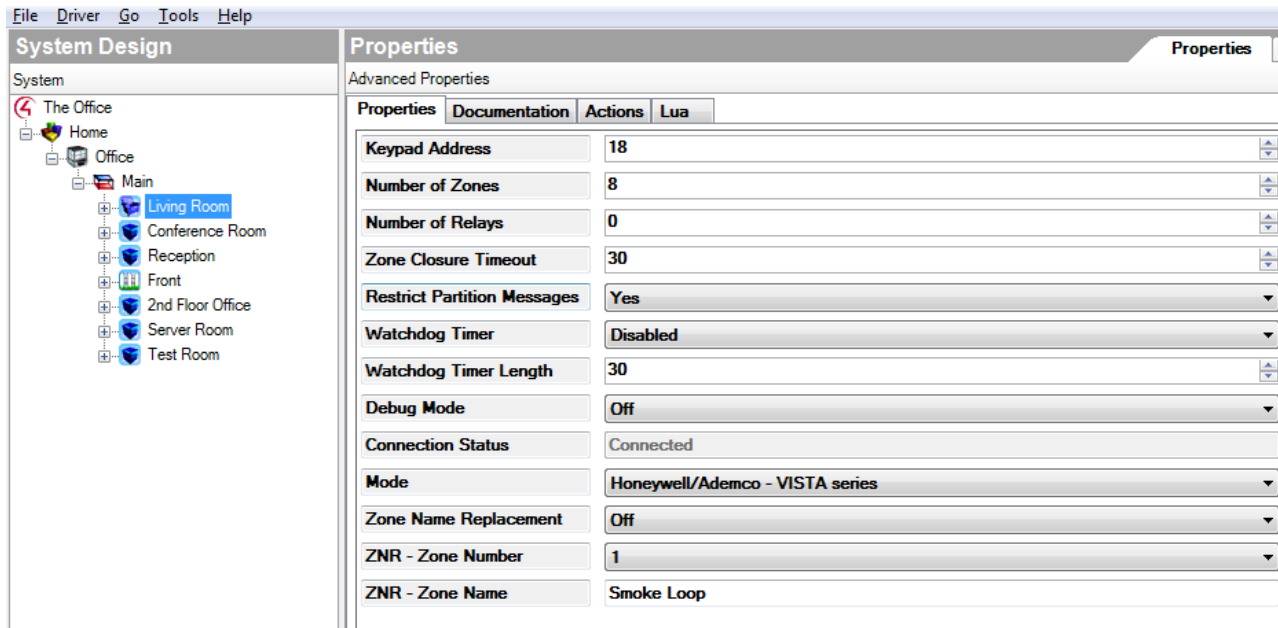


3. Control4 Programming

- a. Once the security panel programming and physical connection has been made, open Composer Pro and connect to the local project.
- b. Add the integration module driver to the project. It can be found under:
 - i. Search - "Local Database"
 - ii. Device Type - "Security System"
 - iii. Manufacturer - "HouseLogix, Inc."
 - iv. Name - "HouseLogix Security Integration Module"



- c. Once the driver has been added to the project, switch to the “Connections” tab and bind the RS232 port to the matching Control4 interface.
- d. Switch back to the “System Design” tab. The driver will read the current adapter settings and update the Properties tab.
- e. At this point you can modify any of the settings below:
 - i. **Keypad Address:** Integer
 1. When using Honeywell, this should be changed to the address written down above that was programmed into the alarm panel. Default HSIM address is 18.
 - ii. **Number of Zones:** Integer
 1. Input the highest number zone you would like to monitor, even if they aren't all used. EG: If you have zones 1,2,3,4,5, 25,26,27,28 and 29 hooked up, you would input 29. Pressing Set will generate those zones so you can connect them to generic sensors in the Connections tab.
 - iii. **Number of Relays:** Integer
 1. Input the total number of relays to activate on the security panel. The driver supports a total of 16 relays, however, you must program the relay board(s) to start at address 12. Only relay status is available, not control.
 - iv. **Watchdog Timer:** Enabled or Disabled.
 1. If Enabled, after the allotted time in the Watchdog Timer Length property expires, it will toggle the WatchdogFailure variable (set to true) under the Security System driver in the Programming tab. This is helpful for determining if the security panel has lost communication with the controller.
 - v. **Watchdog Timer Length:** Integer
 1. The amount of time (in minutes) before the WatchdogFailure variable is tripped in programming. The lower the setting, the higher potential use of resources on the controller.
 - vi. **Debug Mode:**
 1. Used for debugging the driver. Output is displayed on the Lua tab.
 - vii. **Connection Status:**
 1. Shows the current connection status of the HSIM.
 - viii. **Mode:**
 1. Allows the HSIM to be converted from Honeywell to DSC control.
 - ix. **Zone Name Replacement:**
 1. Allows the ZNR to be enabled or disabled.
 2. ZNR allows a security panel that is not programmed with Zone Names to accurately show the appropriate zone name on the navigator or interface.
 - x. **ZNR - Zone Number:**
 1. Used to set the zone number for naming the appropriate zones.
 - xi. **ZNR – Zone Name:**
 1. Used to set the zone name for each zone.



- f. If you would like to monitor any zones or relays, add the generic sensors or relays to the project in the “System Design” tab and then connect each to the corresponding Zone number in the “Connections” tab.
- g. Refreshing the Navigators (Shift + F5) should now show the security system keypad under the Security icon and any connected sensors will show their status under Motorization and Sensors.

LICENSE AGREEMENT

This license governs use of the accompanying firmware. If you use the device, you accept this license. If you do not accept the license, do not use the device. The embedded devices firmware ("Software") is licensed, not sold, to you by Nu Tech Software Solutions, Inc. ("NuTech Software Solutions") for use only under the terms of this License, and Nu Tech Software Solutions reserves any rights not expressly granted to you. You own the device on which the Software is stored, but Nu Tech Software Solutions, its licensors and sub-licensors retain ownership of the Software itself.

1. Definitions

The terms "reproduce," "reproduction" and "distribution" have the same meaning here as under U.S. copyright law. "You" means the licensee of the software. "Your company" means the company you worked for when you downloaded the software. "Reference use" means use of the software by you or within your company as a reference, for the sole purposes of developing your product, debugging your products, maintaining your products, or enhancing the interoperability of your products with the software, and specifically excludes the right to distribute the software outside of your company or to any third party.

2. Grant of Rights

(A) Copyright Grant- Subject to the following terms and conditions, Nu Tech Software Solutions grants to the end user ("You") a non-exclusive, non-transferable, fully paid and royalty-free license, without the right of sublicense, to use the Product solely in the form of the binary firmware image provided, only to the extent necessary to use the hardware. Notwithstanding the foregoing, this License does not apply to the source code or object code of the Product. This license is not a sale. You may not rent, lease, or lend the Product. Nu Tech Software Solutions may cancel this LICENSE if you do not abide by its terms and conditions. This LICENSE applies to updates or supplements to the original Product, unless we provide other terms along with the update or supplement.

RESERVATION OF RIGHTS. Nu Tech Software Solutions reserves all rights not expressly granted to you in this LICENSE. Title and copyrights to the Product remain with Nu Tech Software Solutions.

3. Limitations

(A) No Trademark License- This license does not grant you any rights to use the Licensor's name, logo, or trademarks.

(B) If you begin patent litigation against the Licensor over patents that you think may apply to the software (including a cross-claim or counterclaim in a lawsuit), your license to the software ends automatically.

(C) LIMITATION ON REVERSE ENGINEERING, DECOMPIATION, AND DISASSEMBLY. You may not reverse engineer, decompile, or disassemble the Product. You may not copy the Product or transfer it to other devices without the express prior written consent of Nu Tech Software. Notwithstanding any prior agreement you may have with Nu Tech Software.

(D) The software is licensed "as-is." You bear the risk of using it. In no event will Nu Tech Software Solutions, its parent or subsidiaries or any of the licensors or sub-licensors, directors, officers, employees or affiliates of any of the foregoing be liable to you for any consequential, incidental, indirect or special damages whatsoever (including, without limitation, damages for loss of business profits, business interruption, loss of business information and the like), whether foreseeable or or unforeseeable, arising out of the use of or inability to use the Software or accompanying written materials, regardless of the basis of the claim and even if Nu Tech Software Solutions or a Nu Tech Software Solutions representative has been advised of the possibility of such damage. Nu Tech Software Solutions' liability to you for direct damages for any cause whatsoever, and regardless of the form of the action, will be limited to replacement of the Software that caused the damages. THE LIMITATION WILL NOT APPLY IN

CASE OF PERSONAL INJURY ONLY WHERE AND TO THE EXTENT THAT APPLICABLE LAW REQUIRES SUCH

LIABILITY. BECAUSE SOME JURISDICTIONS DO NOT ALLOW THE EXCLUSION OR LIMITATION OF LIABILITY FOR CONSEQUENTIAL OR INCIDENTAL DAMAGES, THE ABOVE LIMITATION MAY NOT APPLY TO YOU.

4. General

(A) This License will be construed under the laws of the State of Oregon. If any provision of this License shall be held by a court of competent jurisdiction to be contrary to law, that provision will be enforced to the maximum extent permissible, and the remaining provisions of this License will remain in full force and effect. If you are a U.S. Government user, then the Software is provided with "RESTRICTED RIGHTS" as set forth in subparagraphs (c) (1) and (2) of the Commercial Computer Software-Restricted Rights clause at FAR 52.227-19 or subparagraph (c)(1) (ii) of the Rights in Technical Data and Computer Software clause at DFARS 252.277-7013, as applicable. Manufacturer: Nu Tech Software Solutions, 11575 SW Pacific HWY, Suite 109, Tigard, Oregon 97223

5. Termination

(A) This License is effective until terminated. This License will terminate immediately without notice from Nu Tech Software Solutions or judicial resolution if you fail to comply with any provision of this license. Upon such termination you must destroy the Software, all accompanying written materials and all copies thereof, and Sections 3, and 4 will survive any termination.