



Linear Garage Door Opener Integration Release Notes

For model GD00Z-5

Content

Preface...1
Introduction...1
Installing GD00Z-5 devices...2
Pairing and removing the Linear using ClareHome or FusionPro...2
Installing the GD00Z-5 transceiver and tilt sensor...11
Using the garage door opener in the ClareHome app...11
Incompatible openers...12
Contact information...12

Last modified: 08/17/20

Preface

For information on Z-Wave and ClareHome, see [Installing Z-Wave with ClareHome](#).

Notes

- When installing Z-Wave devices, ensure that there is nothing inhibiting their signal. Z-Wave relies on radio signals. Metal or thick walls may limit their signal strength.
- We recommend having 2 or more repeating Z-Wave devices.

Introduction

The Linear GD00Z-5 Garage Door Opener Remote Transceiver provides position-aware garage door integration to ClareHome via the Z-Wave network. It is compatible with most automatic garage door openers connected to a sectional garage door. Installers only need to pair (adding) the unit into the ClareHome Z-Wave network, mount the unit, and then connect two wires.

The GD00Z-5 provides both audible and visual warnings prior to remotely activating door movement. The GD00Z-5 ships with a wireless tilt sensor that attaches to the inside of the garage door, which reports the open, closed, and motion indication status to the controller.

By integrating the GD00Z-5 into a ClareHome control system, your customers can control the garage door from their Android or iOS devices.

Installing GD00Z-5 devices

Only qualified installation technicians should install the GD00Z-5. Follow the installation instructions that came with your GD00Z-5 equipment. We recommend that you pair the GD00Z-5 with the ClareHome Z-Wave controller before installing it in the garage.

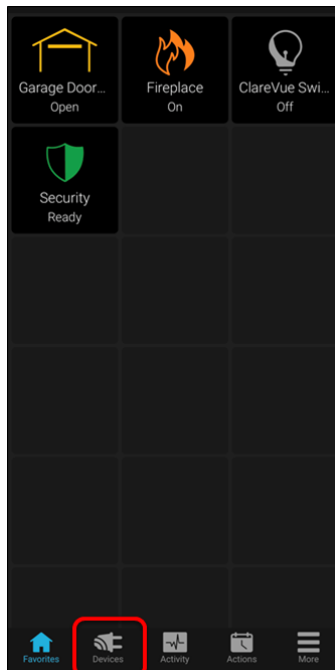
Pairing and removing the Linear using ClareHome or FusionPro

After installing the garage door, add it to the account.

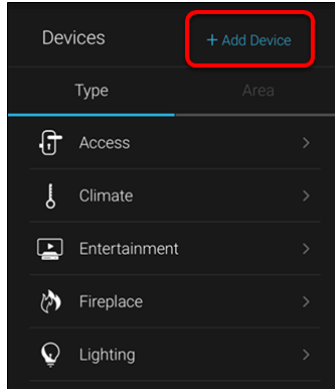
Note: The garage door can be added using ClareHome and FusionPro.

To pair the garage door opener using ClareHome:

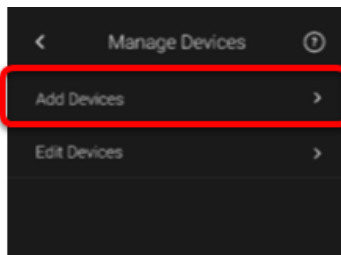
1. Tap the ClareHome app's **Devices** page.



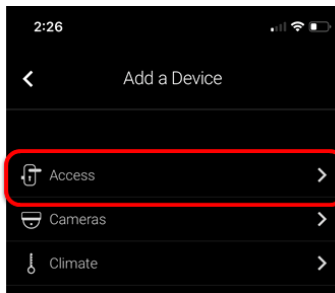
2. Tap **+ Add Device**.



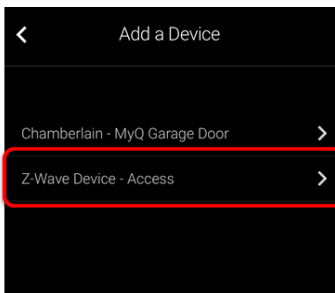
3. Tap **Add Devices**.



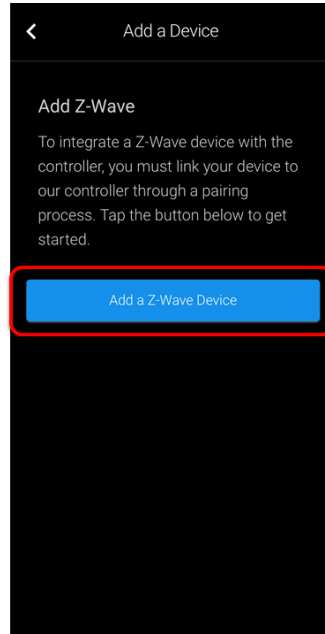
4. Select the device category, **Access**.



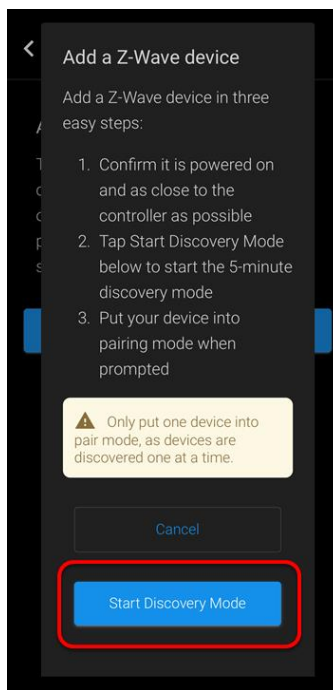
5. Select the device type, **Z-Wave Device - Access**.



6. Read through the displayed information, and then tap **Add Z-Wave Device**.

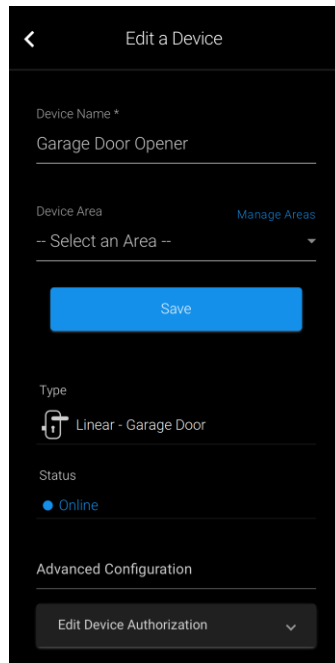


7. Read the Z-Wave information, and then tap **Start Discovery Mode**.




8. When prompted, press the pairing button on the Linear.

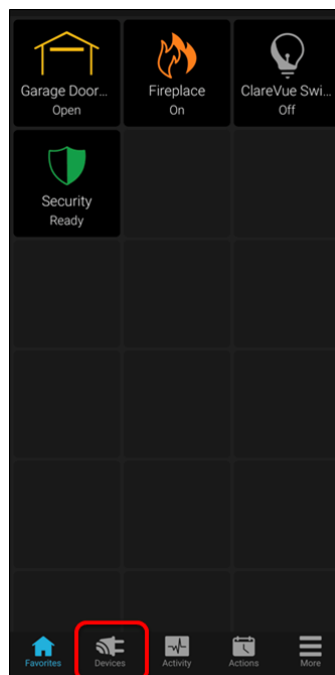
9. Once paired in, the Edit Device page displays.
Customize the device name and location as desired, tapping **Save** when done.



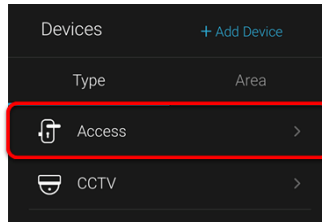
Note: For scenes, notifications, schedules, and automations configuration, see [ClareHome App Guide \(DOC ID 1750\)](#).

To remove the garage door opener in the ClareHome app:

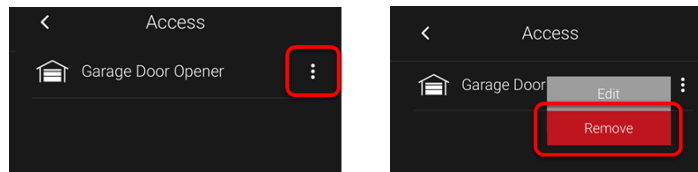
1. Access the ClareHome app, and then tap the **Devices** icon .



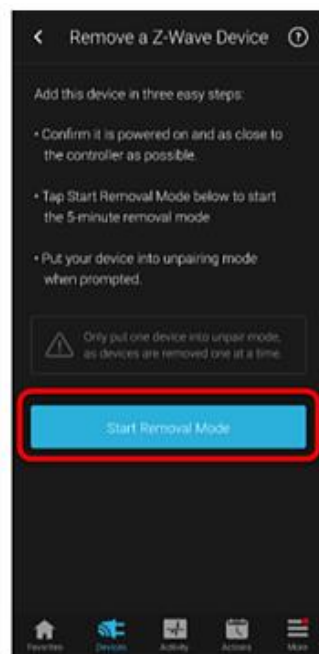
2. Tap **Access**.



3. Tap the 3 dots next to the garage door opener, and then tap **Remove**.



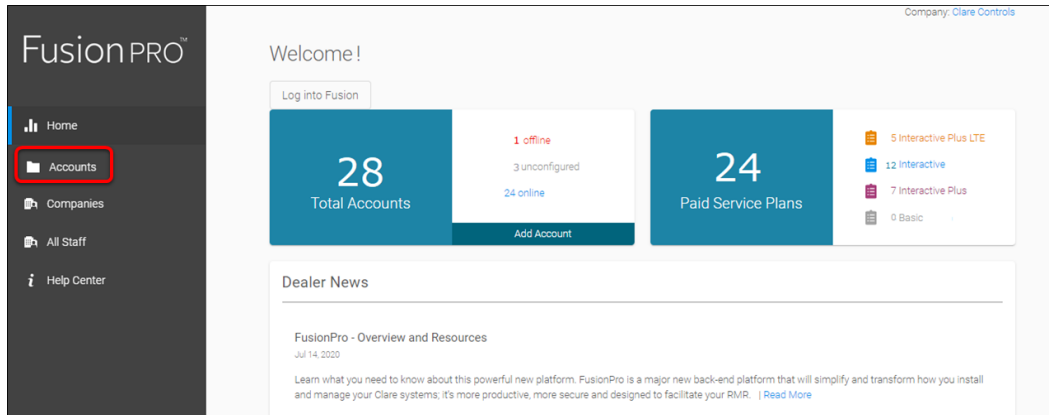
4. Read through the displayed information, and then tap **Start Removal Mode**.



5. Use the manufacturer's instructions for garage door removal.

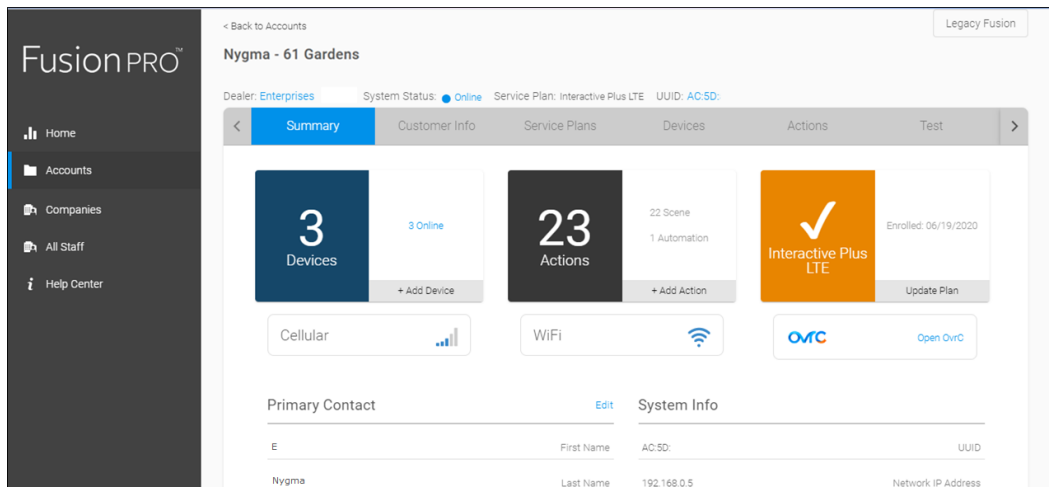
To add the garage door opener in FusionPro:

1. Click **Accounts** in the side menu.

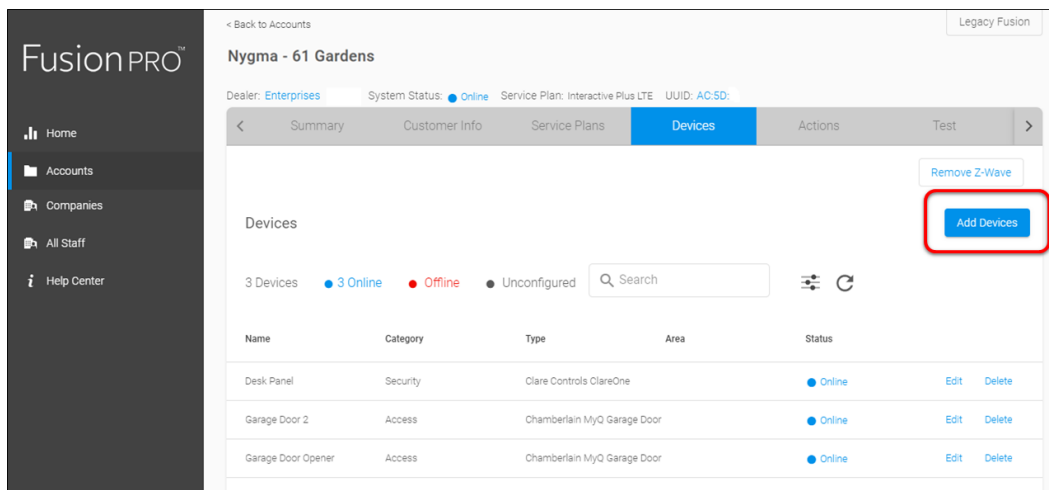


2. Locate the desired account in the list, and then click **View**.

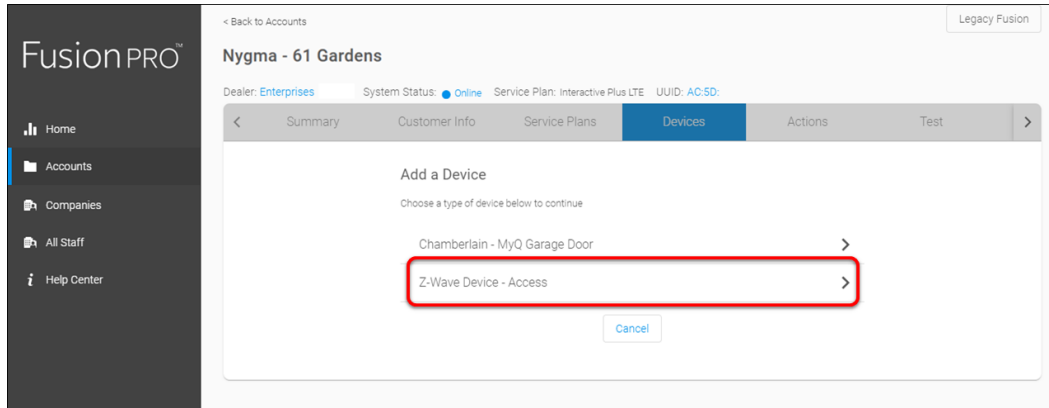
The Account sub-menu is now available.



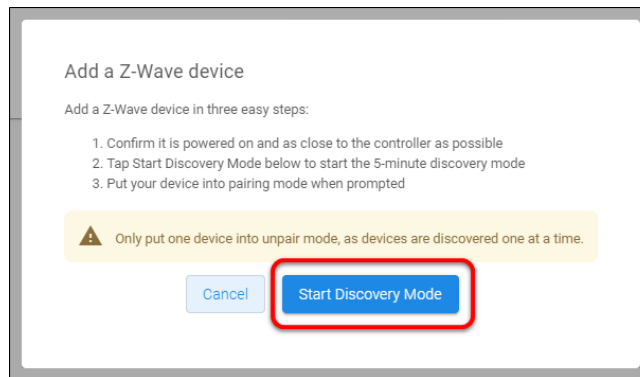
3. Click the **Devices** tab, and then click **Add Devices**.



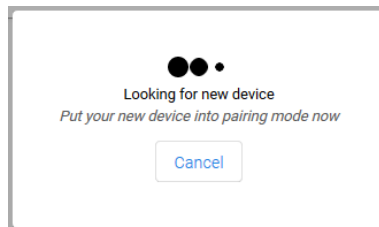
4. Select the device category (**Access**) and then the device type (**Z-Wave Device – Access**).



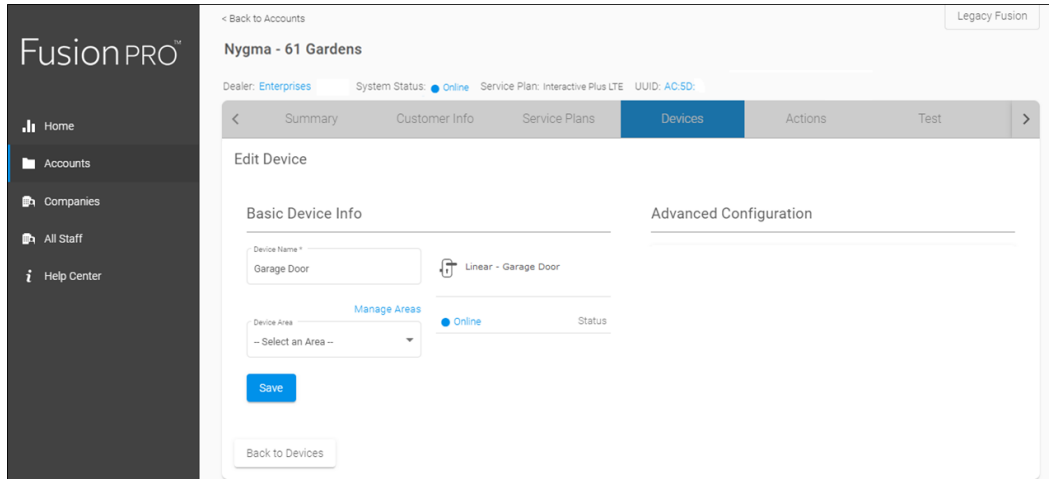
5. Click **Add a Z-Wave Device**, and then click **Start Discovery Mode**.



A popup displays waiting for a notification from the device, pair the Z-Wave device according to the manufacturer's instructions for each device.



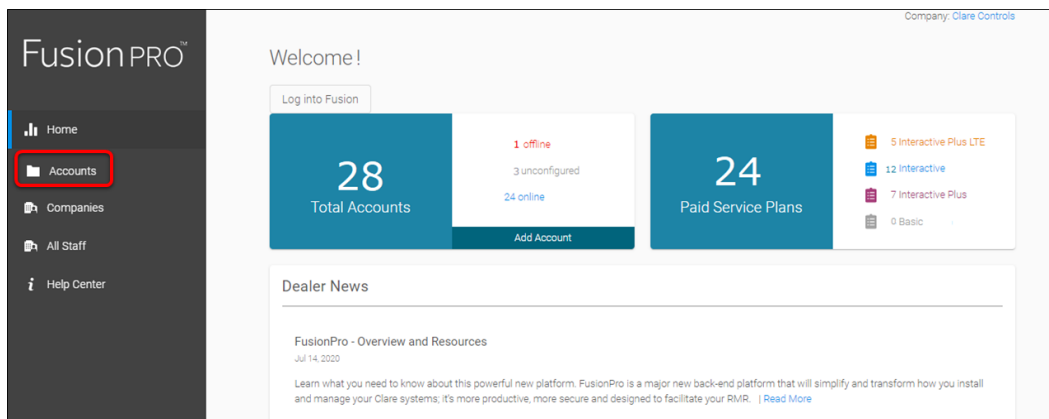
6. Once the device is added, change the name and area as desired.



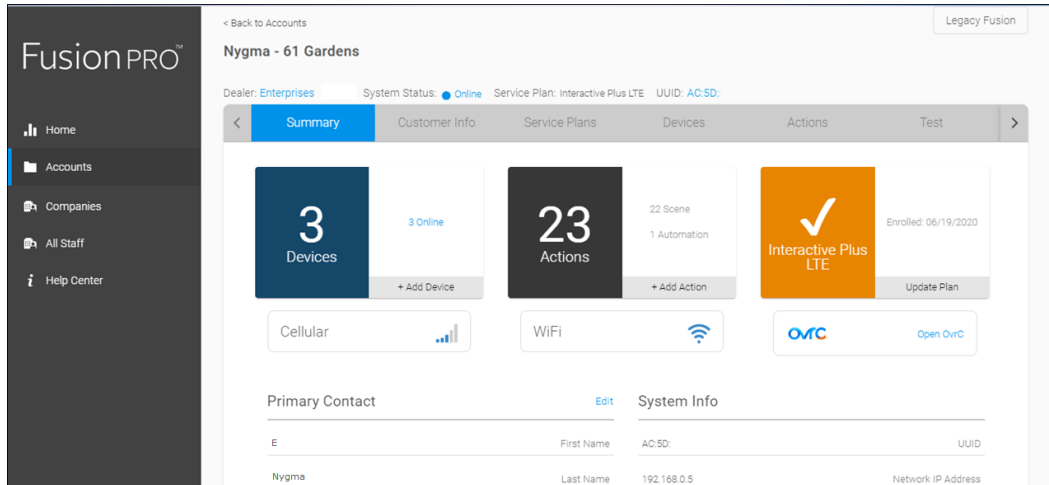
7. Once all desired changes are made, tap **Save**.

To remove the garage door opener with FusionPro:

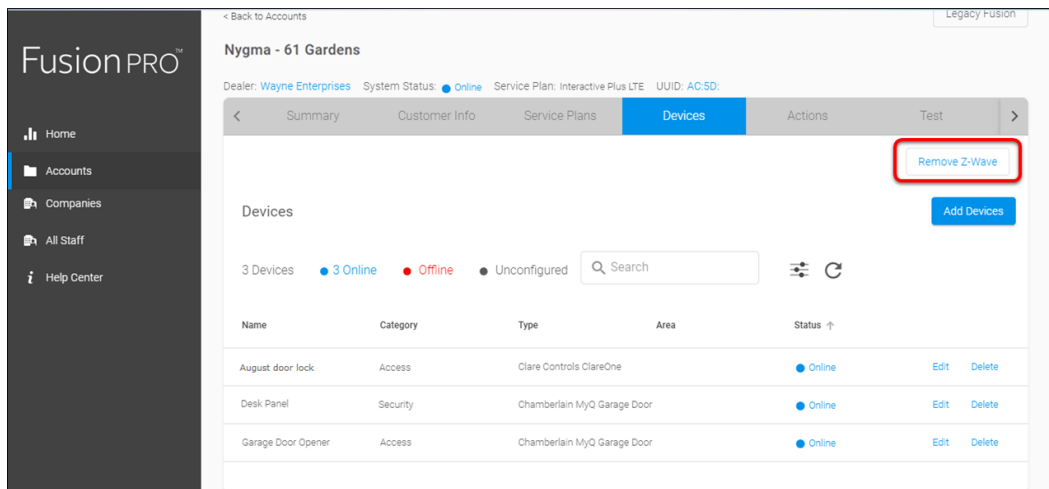
1. Click **Accounts** in the side menu.



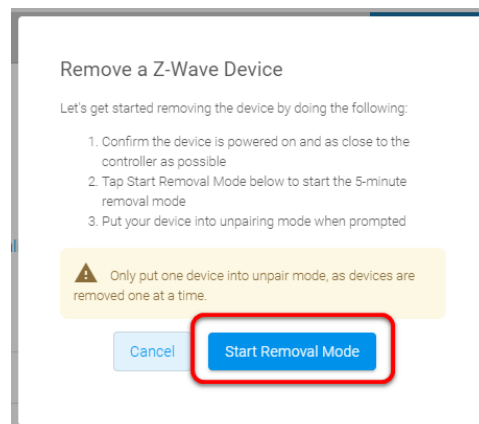
2. Locate the desired account in the list, and then click **View**.
The Account sub-menu is now available.



3. Click the **Devices** tab, and then click **Remove Z-Wave**.



4. Click **Start Removal Mode**.



5. Use the manufacturer's instructions for garage door removal.

Installing the GD00Z-5 transceiver and tilt sensor

To install the GD00Z-5 transceiver and tilt sensor:

1. Install the GD00Z-5 transceiver and tilt sensor according to the manufacturer's instructions.
2. Next, follow the manufacturer's system operations to synchronize the system.
3. Access your ClareHome app and verify that the Linear garage door opener is now available in the **Device** tab.

Using the garage door opener in the ClareHome app

Once added, the user can add the Linear device to their Favorites, and then tap the garage door tile to display and operate the garage door's controls.

Figure 1: Linear display

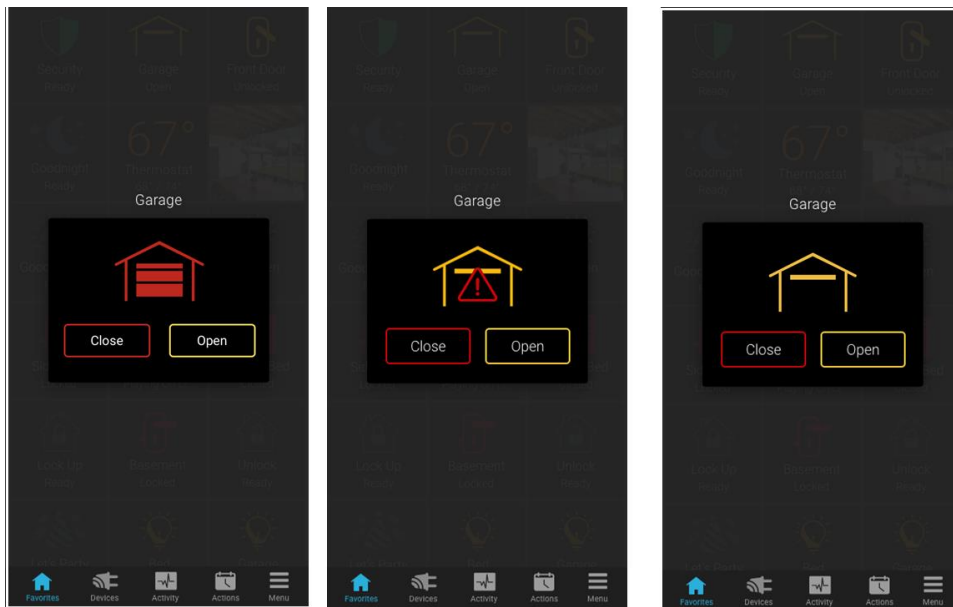





Table 1: Garage door state icons

Icon color	Garage door status
	The garage door is closed.
	The garage door status is unknown.
	The garage door is open.

Incompatible openers

The GD00Z-5 is compatible with most sectional garage door openers manufactured after 1993; however, a few are known to be incompatible. The following lists the incompatible openers. This is not intended to be a complete list, but identifies some recent models commonly found in the retail marketplace.

Chamberlain MyQ Models:

- WD962KEV, KPEV and MLEV WD832KEV
- HD 930EV and 420EV LW500EV
- PD752D and KPV

Genie Series III Models:

- PowerMax 1500
- TriloG 1200 and 1500
- IntelliG 1000 and 1200

LiftMaster MyQ Models:

- 8355, 8360, 8500, 8550, 8557, and 8587

Craftsman AssureLink / MyQ Models:

- 3043 and 30437

Contact information

Clare Controls, LLC.
7519 Pennsylvania Ave, Suite 104
Sarasota, FL 34243

General: 941.328.3991
Fax: 941.870.9646
www.clarecontrols.com

Integrator/Dealer Support: 941.404.1072
claresupport@clarecontrols.com

Homeowner Support (ClareCare): 941.315.2273 (CARE)
help@clarecontrols.com