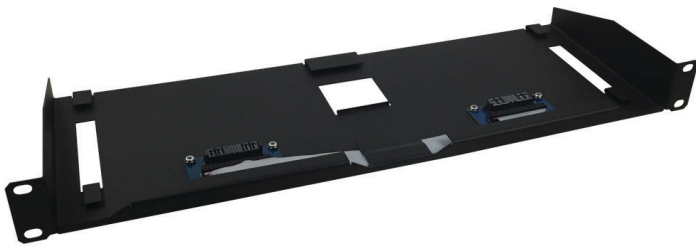




CLIQ Rack Mount Kit

CLIQ.RACK



This 1RU Rack Mount Kit allows simple mounting of your CLIQ.host or CLIQ.express into a standard 19" rack enclosure. It supports 1 CLIQ.host or 1 CLIQ.express, and up to 3 CLIQ.connects in a 2RU space. After mounting into the rack, simply snap your CLIQ controller or CLIQ.connect into the mount via the integrated Clarebus connector.

- 1RU rack mountable unit
- Supports 1 CLIQ.host or 1 CLIQ.express and up to 3 CLIQ.connect expansion modules
- Simple to mount and connect
- Two built in Clarebus connections

Technical Specifications

General	
Connections	2 Clarebus connections
Supports	1 CLIQ.host or CLIQ.express and up to 3 CLIQ.connect expansion modules
Mounting	1RU rack mountable, 2RU with max number of devices
Specifications	
Material	18 gauge steel with black powder coat
Dimensions (H x W x D)	1.75 x 19 x 6.75 in (44.45 x 482.6 x 171.5 mm)
Weight	3 lbs.

