

### Value and Performance Series



ClareVision delivers a complete line of professionally installed and competitively priced surveillance products designed to meet the needs of dealers and end users. ClareVision consists of Value and Performance series of ETL listed, NDAA, and ONVIF compliant cameras and NVRs. The cameras and NVR's can be used as a standalone surveillance systems or integrated with a ClareOne Security and Smart Home system or with Control4.

#### Value Series Product Line

Value series ClareVision cameras are designed as a low-cost solution that can be used standalone with a microSD card or in larger, multi-camera projects with an NVR.

- Complete line of cameras and accessories
- Features standard motion detection capabilities
- Include on-board SD cards for storage
- Maximize dealer margins

#### Performance Series Product Line

The Performance Series line offers a wide range of cameras and NVRs that range from 4MP to 8MP (4K) fixed and varifocal lens cameras, Color at Night cameras, and multi-channel NVRs to cover any projects needs.

- Feature powerful Sony® Starvis™ image sensors
- Advanced detection capabilities: human body, line crossing, loitering, and people gathering
- Maximize dealer margins



#### Standalone Surveillance

ClareVision cameras are perfect for simple, 30-minute standalone installations or large, multi-camera projects. Each camera or NVR can be used independently with only the ClareVision App.

#### Integrated Surveillance

ClareVision cameras and NVRs can be used as part of larger smart home and security systems such as ClareOne or Control4, and can be used with LUMA, Hikvision, Legacy ClareVision, and other ONVIF compliant cameras.

#### Easy-to-Use ClareVision App

ClareVision camera live video, event playback, activity notifications, and basic settings can be easily accessed from the ClareVision App available on Android and iOS.

#### “At the Edge” Surveillance

ClareVision delivers edge-based features, with Value Series cameras that include built-in SD cards, digital WDR, and motion detection.

Amplify your next project to the limit with Performance Series cameras and NVRs that feature Sony® Starvis™ image sensors, true WDR, advanced motion and human detection, and more!

#### NDAA Compliant

All ClareVision Cameras and NVRs are manufactured with chipsets that are in full compliance with the NDAA (National Defense Authorization Act) Defense Law.



## Clare Video Plus Doorbell



**ClareVision Smart Video Doorbell**  
CLR-V200-VDB

- 2MP (1920 x 1080p) image sensor at 30FPS.
- 2.4 and 5 GHz Wi-Fi connectivity and two-way voice.
- Works with ClareOne and includes 16GB micro SD.

## ClareVision Value Series Cameras



**2MP Bullet, 3.6mm, 16GB**  
CLR-V100-2B36(W/B)

**4MP Bullet, 3.6mm, 32GB**  
CLR-V100-4B36(W/B)

- Bullet form factor with 2MP or 4MP configuration.
- 2MP includes 16GB, 4MP includes 32GB SD card.
- IP67 rating, and IR night vision up to 25 meters



**2MP Turret, 3.6mm, 16GB**  
CLR-V100-2T36(W/B)

**4MP Turret, 3.6mm, 32GB**  
CLR-V100-4T36(W/B)

- Turret form factor with 2MP or 4MP configuration.
- 2MP includes 16GB, 4MP includes 32GB SD card.
- IP67 rating, and IR night vision up to 25 meters

## ClareVision Performance Series Cameras



**4MP Mini Dome, Starvis™, 32GB**  
CLR-V200-4D28(W/B)

**8MP Mini Dome, Starvis™, 2.8mm**  
CLR-V200-8D28(W/B)

- 4MP or 8MP options with a Mini Dome form factor.
- 4MP Dome includes 32GB micro SD card.
- Features Sony® Starvis™ image sensor with True WDR image correction and IR night vision up to 30 meters.



**4MP Bullet, Starvis™, 2.8mm, 32GB**  
CLR-V200-4B28(W/B)

**8MP Bullet, Starvis™, 2.8mm, WDR**  
CLR-V200-8B28(W/B)

- Bullet form factor with 4MP or 8MP configuration.
- 4MP Bullet includes 32GB micro SD card.
- Includes built-in microphones.
- Supports IR night vision up to 25 meters.



**4MP Turret, Starvis™, 2.8mm, 32GB**  
CLR-V200-4T28(W/B)

**8MP Turret, Starvis™, 2.8mm, WDR**  
CLR-V200-8T28(W/B)

- Turret form factor with 4MP or 8MP configuration.
- 4MP Turret includes 32GB micro SD card.
- Includes built-in microphones.
- Supports IR night vision up to 25 meters.



**4MP Dome, Starvis™, Motorized Varifocal**  
CLR-V200-4DVF(W/B)

**8MP Dome, Starvis™, Motorized Varifocal**  
CLR-V200-8DVF(W/B)

- Dome form factor with 4MP or 8MP configuration.
- Features 2.7-13.5mm motorized varifocal lens.
- Supports micro SD card up to 512GB.
- Supports Smart Events and True WDR.



**4MP Bullet, Starvis™, Motorized Varifocal**  
CLR-V200-4BVF(W/B)

**8MP Bullet, Starvis™, Motorized Varifocal**  
CLR-V200-8BVF(W/B)

- Bullet form factor with 4MP or 8MP configuration.
- Features 2.7-13.5mm motorized varifocal lens.
- Supports micro SD card up to 512GB.
- Supports Smart Events and True WDR.



**4MP Turret, Starvis™, Motorized Varifocal**  
CLR-V200-4TVF(W/B)

**8MP Turret, Starvis™, Motorized Varifocal**  
CLR-V200-8TVF(W/B)

- Turret form factor with 4MP or 8MP configuration.
- Features 2.7-13.5mm motorized varifocal lens.
- Supports micro SD card up to 512GB.
- Supports Smart Events and True WDR.

## ClareVision Performance Series Color at Night Cameras



**4MP Turret, CN, 2.8mm, 32GB**  
CLR-V300-4T28CN(W/B)

**8MP Turret, CN, 2.8mm, WDR**  
CLR-V300-8T28CN(W/B)

- Color at night viewing with warm white LED light.
- Turret form factor with 4MP or 8MP configuration.
- Includes built-in microphones.
- 4MP Turret includes 32GB micro SD card.



**4MP Bullet, CN, 2.8mm, 32GB**  
CLR-V300-4B28CN(W/B)

**8MP Bullet, CN, 2.8mm, WDR**  
CLR-V300-8B28CN(W/B)

- Color at night viewing with warm white LED light.
- Bullet form factor with 4MP or 8MP configuration.
- Includes built-in microphones.
- 4MP Bullet includes 32GB micro SD card.



**8MP Turret, CN, Motorized Varifocal**  
CLR-V300-8TVFCN(W/B)



**8MP Bullet, CN, Motorized Varifocal**  
CLR-V300-8BVF(W/B)

- Color at night viewing with warm white LED light.
- Features 2.7-13.5mm motorized varifocal lens.
- Support Smart Events and micro SD up to 512GB.

## ClareVision Wi-Fi Cameras and NVRs

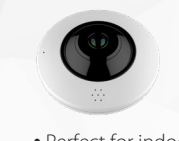


**4MP Wi-Fi Turret, 3.6mm, 32GB**  
CLR-V100-4T36WF-W



**4MP Wi-Fi Bullet, 3.6mm, 32GB**  
CLR-V100-4B36WF-W

- Support 2.4 GHz Wi-Fi connectivity.
- 4MP (2560 x 1440p) resolution at 30 FPS.
- Includes 32GB micro SD card and IR range up to 25M.



**4MP Indoor Fisheye Wi-Fi Camera**  
CLR-V200-4FEWF

- Perfect for indoor residential or commercial use.
- 4MP, 1920 x 1920 resolution at 30 FPS, 15M IR.
- 360° fisheye view covers the entire room.
- Supports 2.4 GHz Wi-Fi connectivity.
- Includes built-in microphone and speaker.



**4K, 4 Channel NVR, POE, 1TB HDD**  
CLR-V200-4PNVR1



**4K, 8 Channel NVR, POE, 2TB HDD**  
CLR-V200-8PNVR2



**4K, 16 Channel NVR, POE, 4TB HDD**  
CLR-V200-16PNVR4

- 4-ch/POE, up to 9 cameras, 1T HDD.
- 8-ch/POE, up to 16 cameras, 2TB HDD.
- 16-ch/POE, up to 25 cameras, 4TB HDD, rack ears.

## ClareVision Accessories



**32, 64, 128 GB Micro SD Card**  
CLR-VACC-(32|64|128)GBSD

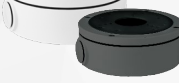


**Clare PoE Injector**  
CLR-CC-POE-10

- High endurance Micro SD cards.
- SD cards available in 32, 64, and 128GB sizes.
- Power ClareVision cameras using PoE injector.



**J-Box: Fixed Lens Bullet**  
CLR-VACC-JBOX1(W/B)



**J-Box: Fixed Lens Turret & VF Dome**  
CLR-VACC-JBOX2(W/B)



**J-Box – Fixed Lens Dome**  
CLR-VACC-JBOX3(W/B)

- Helps protect wires from weather elements, corrosion, and electrical shorts.
- Available in white and black color options.



**Wall Bracket - Fixed Lens Dome**  
CLR-VACC-WBKT1(W/B)



**Wall Bracket - Fixed Lens Turret**  
CLR-VACC-WBKT2(W/B)



**Wall Bracket – VF Dome & Turret**  
CLR-VACC-WBKT3(W/B)

- Wall mount bracket helps protect wires from elements.
- Available in white and black color options.