

Global Cache Integration with the HSIM

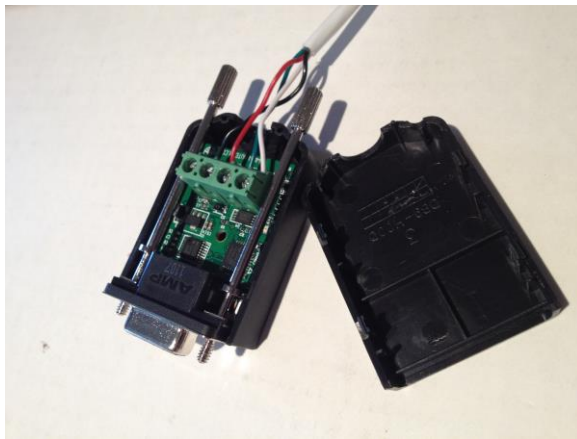
Overview:

- The main purpose of this document is to demonstrate how to make the HSIM wireless using the Global Cache iTach, Wifi to Serial device (WF2SL).

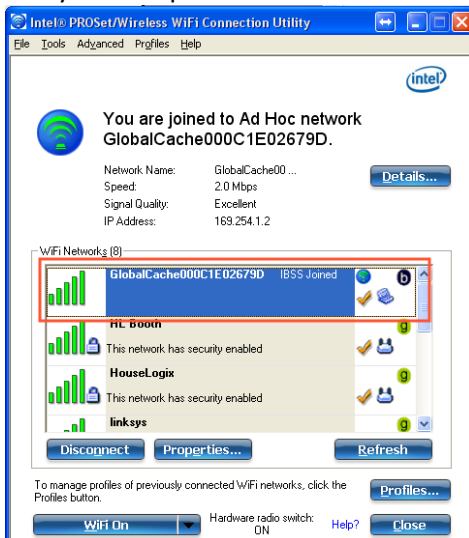
Global Cache iTach WF2SL Wifi to Serial



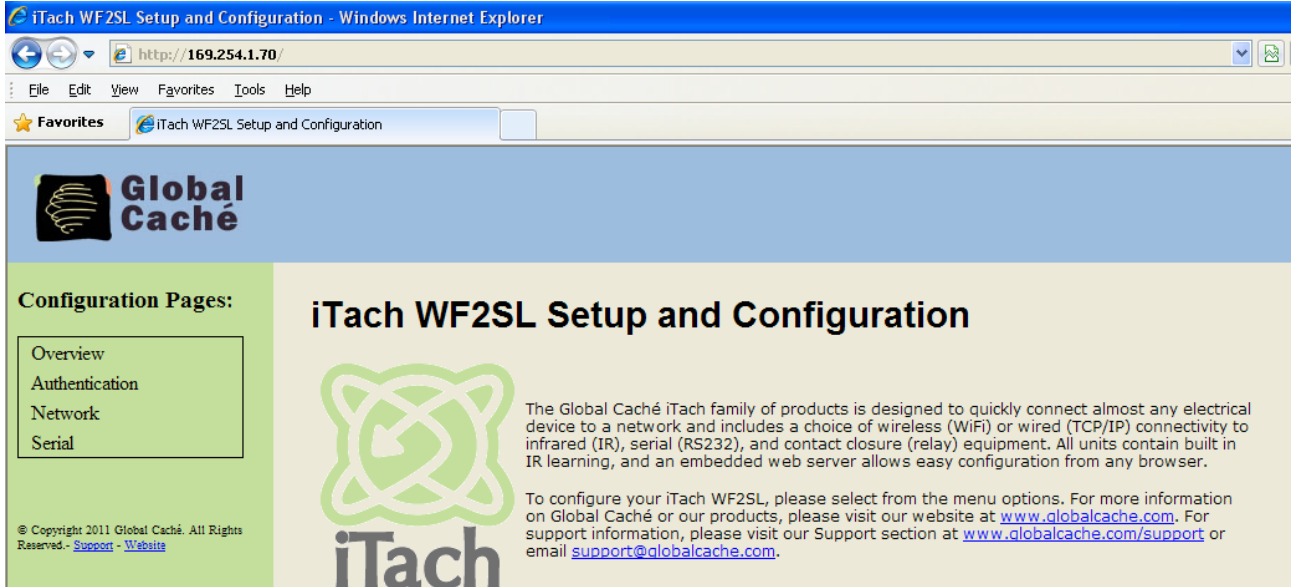
HSIM Security Adapter



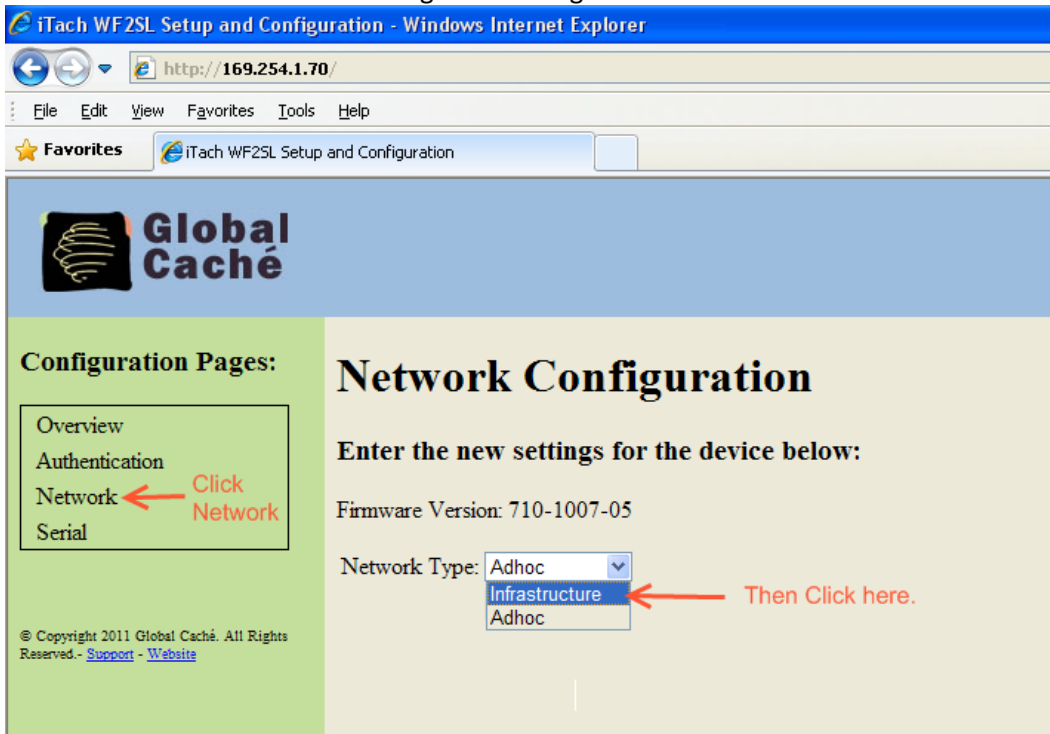
1. Power the iTach using the supplied power supply or included USB power cable.
2. Use your computer's wireless software to connect to the iTach AdHoc network.



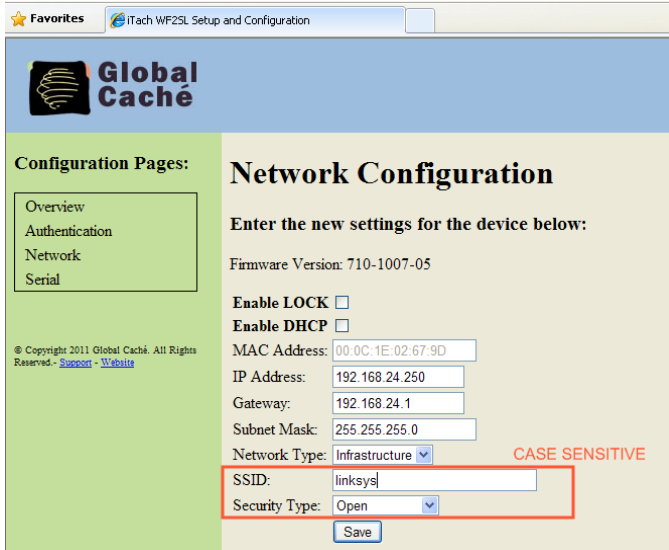
3. Once connected to the iTach, open a web browser and type in the following address.
<http://169.254.1.70>



4. Click on the Network Tab and change the setting from AdHoc to Infrastructure.



5. Change the IP address to one within the range of your network, along with the gateway, the SSID and security type. **IMPORTANT:** When entering the SSID and Security Encryption you must type the exact letters (Case Sensitive). If you do not put in the correct information you will need to factory default the iTach and start over. Once all data is entered click Save and the iTach will restart.

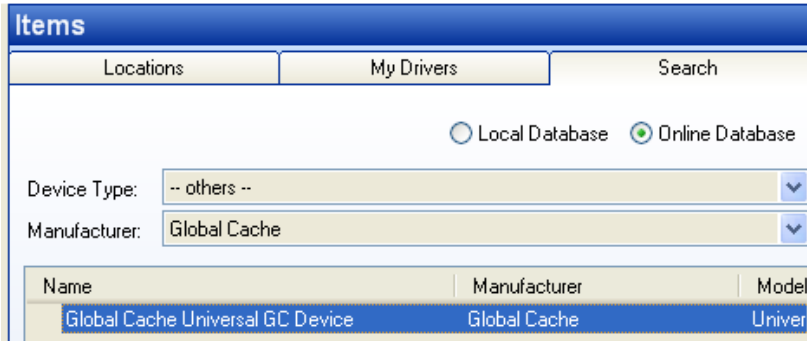


6. Use your computer's wireless software to connect back to your network.
7. Again, open a web browser and type in the Static IP address you assigned to the iTach in the previous step. Click on the serial tab and verify that the settings match the following picture. By default the settings should be correct, but always verify.

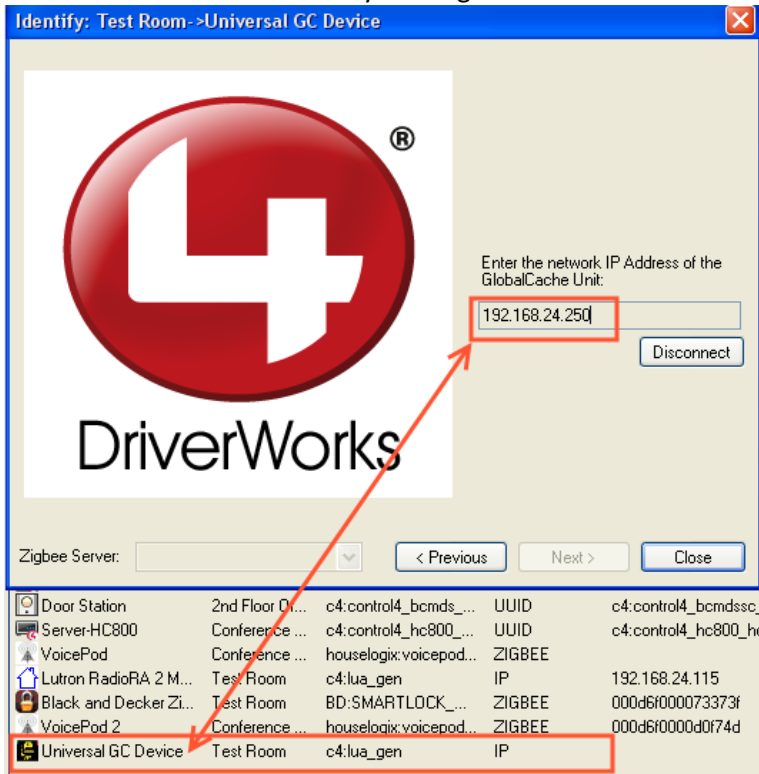


8. Add the Global Cache Universal GC Device Driver to your Control4 System.
 - Open Composer Pro Edition
 - Go to System Design and then the room you wish to add the device.
 - On the right side of the screen under Items, select the search tab, then select the Online Database.

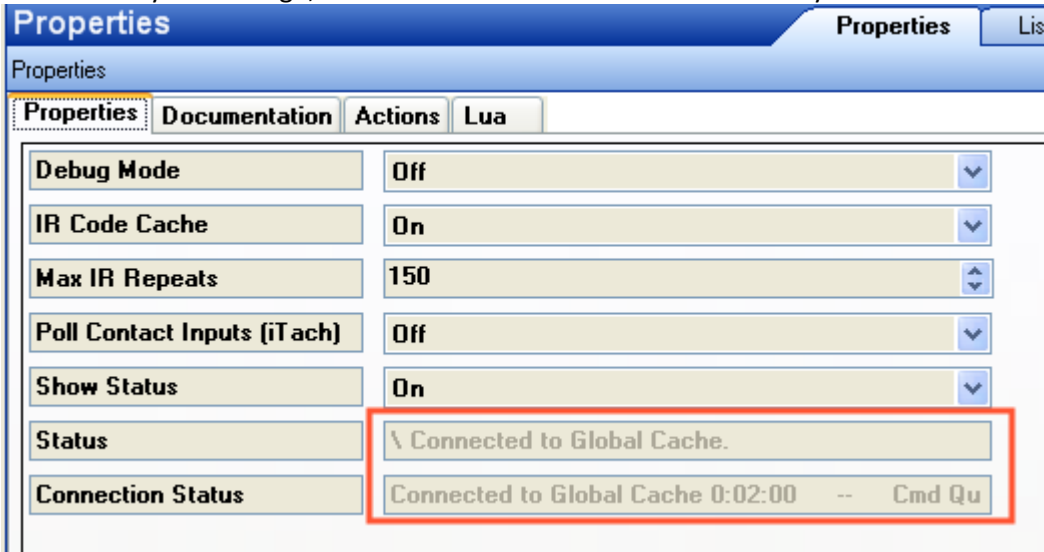
- Device Type is Others, and Manufacturer is Global Cache
- Select the Global Cache Universal GC device Driver and add to your project.



9. Go to the Connections tab and then the Network Tab. Select the Global Cache Driver. Open the driver and add the Static IP Address that you assigned the iTach earlier.

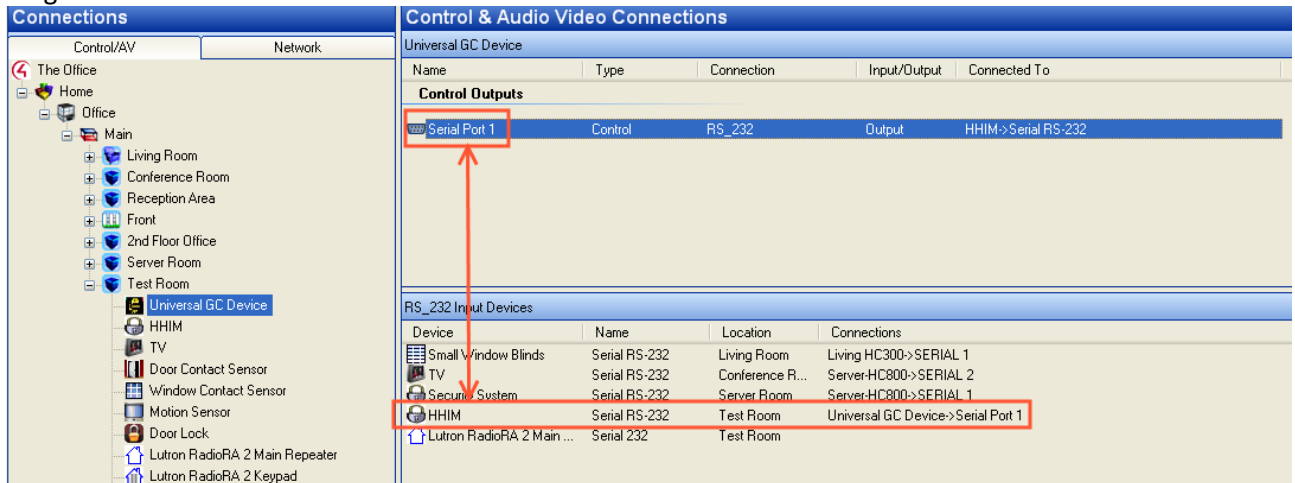


10. Go back to System Design, click on the Global Cache Driver and verify that the iTach is online.



11. Make the appropriate bindings to your HSIM.

- Go to the Connections Tab, and then the Control A/V Tab
- Click on the Global Cache Driver and bind to the HSIM.
- Plug the HSIM into the Global Cache iTach device.



12. Refresh navigators and your HSIM should be controlled wirelessly.