



ring

Battery Doorbell Plus

Our next generation battery doorbell with upgraded HD+ video, Head-to-Toe field of view, and color night vision.



1536p HD+
Head-to-Toe Video



Motion Detection
and Alerts



Two-Way Talk
with Quick Replies



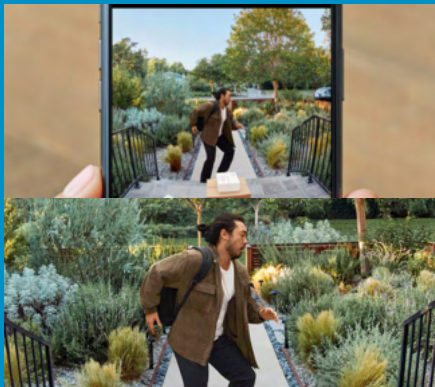
Customizable
Privacy Settings



Quick Release
Rechargeable Battery



Works with
Alexa



Front door protection in high-definition

Head-to-Toe HD+ Video in 1536p and Color Night Vision means you can help secure your home with a super clear view of who stops by - even after the sun goes down. Need a closer look? Just zoom in.



Package Detection and Alerts

Get important alerts with Package Alerts, an exclusive Ring Protect subscription feature that notifies you when your package is detected within a specific zone.



Quick Replies

If you're busy, save time and ask visitors to leave a message with pre-selected Quick Replies. It's like an answering machine for your front door. (Subscription required to access and review the Quick Replies recording).

Technical Specifications

Video:	1536p HD+ Video, Live View, Color Night Vision
Field of View:	Head-to-Toe Video 150° Horizontal, 150° Vertical
Motion Detection:	Advanced Motion Detection with Customizable (Drawable) Motion Zones
Audio:	Two-Way Talk with Noise Cancellation Quick Replies
Power:	Quick Release Battery Pack (included). Can be hardwired to an existing doorbell system or transformer for charging (8-24 VAC, 40VA max, 50/60Hz). No halogen or garden-lighting transformers; no DC transformer/power supply. Ring Solar Charger and Ring Plug-In Adapter accessories available (sold separately).
Connectivity:	Standard 2.4 GHz Wi-Fi
Dimensions:	5.1 in x 2.4 in x 1.1 in (128.54 mm x 62 mm x 28 mm)
Operating Conditions:	-5°F to 122°F (-20.5°C to 50°C), Weather Resistant
Features:	Customizable Privacy Settings Person and Package Alerts ¹

1. Requires a subscription to Ring Protect

Add-Ons



Ring Chime Pro

Hear notifications anywhere in your home when motion is detected. Plus, amplify all your devices and boost your Wi-Fi network to all your Ring Video Doorbells and Cams.



Voice Assistant

Enjoy hands-free home monitoring with select Alexa-enabled devices. Hear custom notifications and use two-way talk with audio-only Echo devices, and launch video with Echo Show, Fire TV and Fire Tablets.



Ring Quick Release Battery Pack

Get a second rechargeable battery pack for your Battery Doorbell Plus so you'll always have backup power. Swaps in and out of the doorbell with a quick-release tab.

Ring Battery Doorbell Comparison Chart

	Video Doorbell (2nd Generation)	Battery Doorbell Plus	Video Doorbell 4
Power Source	Built-in Rechargeable Battery or Hardwired	Removable Rechargeable Battery or Hardwired	Removable Rechargeable Battery or Hardwired
Field of View	155° horizontal/90° vertical	150° horizontal/150° vertical	160° horizontal/84° vertical
Wi-Fi Connectivity	2.4 GHz	2.4 GHz	2.4 GHz and 5.0 GHz
HD Video	1080p HD	1536p HD+	1080p HD
Color Night Vision	✓	✓	✓
Live View and Two-Way Talk	✓	✓	✓
Motion Detection and Alerts	✓	✓	✓
Control from Ring App or Alexa-Enabled Device	✓	✓	✓
Quick Replies	✓	✓	✓
Person and Package Alerts	✓	✓	✓
Removable Battery Pack for Easy Charging		✓	✓
Interchangeable Faceplates		✓	✓
Corner Kit Included		✓	✓
Head-to-Toe Video		✓	
Color Pre-Roll			✓

Frequently Asked Questions

What is the difference between Ring Video Doorbell (2nd Generation) and Ring Battery Doorbell Plus?

The main difference between Ring Video Doorbell (2nd Generation) and Ring Battery Doorbell Plus is that Ring Battery Doorbell Plus is an upgraded smart doorbell camera with super clear 1536p HD+ video and taller Head-to-Toe field of view. From package deliveries and motion detection to visitors, you'll see it all from wherever you are right in the Ring App.

What's Ring Protect?

Ring Protect is a comprehensive service that activates video recording and photo capture, saving and sharing for your Ring doorbell or camera, plus a few perks. Visit ring.com to learn more about Ring Protect.