

TONE CONTROLS

- After the speaker is installed, please test the speaker using music or content you are familiar with.
- The 500 and 700 series speakers allow you to control the amount of treble. The factory setting is in the plus "+" position and gives a full and clear sound in a typical furnished room with absorption from soft materials like carpets, furniture and people. If the room is very reverberant you decrease the tweeter response and high frequency clarity by moving the switch to the minus "-" position

500 SERIES



700 SERIES



- The 700 series speakers allow you to also control the woofer crossover response. The factory setting is also in the plus "+" position for a full and clear sound in a typical furnished room. Depending on the room acoustics you might need to subtract some of the mid-bass to obtain better clarity by moving the woofer switch to the minus "-" position. This is convenient in installation areas that have a large amount of reflective surfaces, such as glass, hardwood floors, concrete, etc.
- Please adjust the control(s) until the sound is optimized for the environment
- Carefully insert the magnetic grille into the speaker.

PAINTING

It is highly recommended that the speakers be painted prior to installation. If it is necessary to paint them while installed, the provided paint mask should be used in place of the grille to protect the speaker. The grille may be painted as well with great care taken not to clog the fine holes with paint. Only paint grilles when they have been removed from the speakers.

TROUBLESHOOTING

Episode speakers are designed to function trouble-free. Most problems that occur are due to simple issues. If you have trouble, please check the list of simple fixes below. If the problem persists, contact Episode Customer Service at 1.866.838.5052.

NO SOUND

- Verify that there is audio coming from the source selected. Select another source if necessary.
- Ensure that any power amplifiers are turned on and connected properly.
- Check any connections at other devices, such as a volume control. Temporarily bypass the control if needed.
- Check wire connections at each speaker not producing sound for good contact to bare wire, not wire insulation.

WARRANTY

Limited Lifetime Warranty

Episode in-wall, in-ceiling and bookshelf Speakers have a Lifetime Limited Warranty. This warranty includes parts and labor repairs on all components found to be defective in material or workmanship under normal conditions of use. This warranty shall not apply to products which have been abused, modified or disassembled. Products to be repaired under this warranty must be returned to SnapAV or a designated service center with prior notification and an assigned return authorization number (RA).



engineered by
Snap
av

OWNER'S MANUAL

>> IN-CEILING SPEAKERS

ES-500T-IC ES-700T-IC



Thank you for purchasing a great product from one of the best sounding speaker lines available today, Episode®. We appreciate your purchase and are committed to providing the highest quality products possible.

The Episode in-ceiling models are a superb choice for almost every type of home theater or home audio installation. They have been designed with advanced technological components that allow for high performance and a lifetime of enjoyment.

IMPORTANT INSTRUCTIONS AND CONSIDERATIONS

- Read and understand all instructions.
- Before beginning installation, carefully plan locations accounting for potential electrical, plumbing or other obstacles.
- Contact a suitable contractor if you are unsure of how to best install.

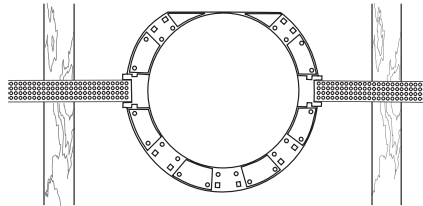
GENERAL GUIDELINES

- Keep speakers about 2 feet away from corners and other surfaces that might interfere with or reflect sound, such as tall furniture.
- For rooms less than 300 square feet, two speakers should suffice. The further apart they are, the better the sound will be. However, keep the distance at a maximum of 8-10 feet to avoid a "hole" in the middle. For smaller rooms like bathrooms and offices, Episode dual voice coil speakers can also be a superb choice.
- For rooms larger than 300 square feet, use 3 or more speakers. Stagger them across the space for good sound dispersion.

INSTALLATION

NEW CONSTRUCTION

Episode speaker installations can be simplified by using Episode new construction brackets (Sold Separately). These are installed prior to drywall, and allow for precise placement and ease the final installation of the speaker.

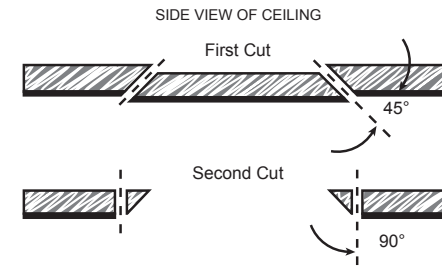


EXISTING CONSTRUCTION

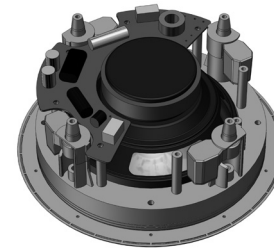
Speaker wire must be run from the equipment or volume control location to each potential speaker location.

- Choose a location for each speaker that is free of obstructions created by joists, HVAC ductwork, electrical wire runs, plumbing or anything else that might not allow for the depth of the speaker or create interference or noise.
- Once you have determined your locations, mark the hole to cut out for the speaker using the supplied template. Don't forget to allow for the size of the speaker bezel if you are choosing to install the speaker near a side wall or other item that could become an obstacle.

- If you are unsure of potential obstacles, carefully cut a small hole at an angle to the inside of the template line as illustrated. This will allow you to 'plug' the hole easily if needed. If the area is clear and is a good location for the speaker, go ahead and cut the edges of the opening at 90 degrees to accommodate the speaker diameter.



- Strip the insulation on each conductor approximately 1/4" and insert into the speaker terminals. Ensure that there are no stray strands of wire protruding from the connectors. Observe proper polarity (+ to + and - to - for each speaker and at the amplifier).
- Insert the speaker into the ceiling and tighten each of the four screws for the speakers 'dog' legs enough to clamp the speaker against the ceiling.



CAUTION: Do not overtighten screws. This could result in speaker damage, ceiling damage or both.

OPTIONS

PIVOTING TWEETER ASSEMBLY

- The pivoting tweeter assembly can be directed to focus the sound where you want
- Two common options are:
 - Point it directly at the listening area for a more pointed sound source
 - Reflect it off hard surfaces for a more diffused sound field

