



Non-Metallic and Plated Steel 4x4 Boxes

New!

For retrofit construction. Screw hole patterns for 4x4 and 2-gang devices. Available in non-metallic (black and red plastic) and plated steel versions.

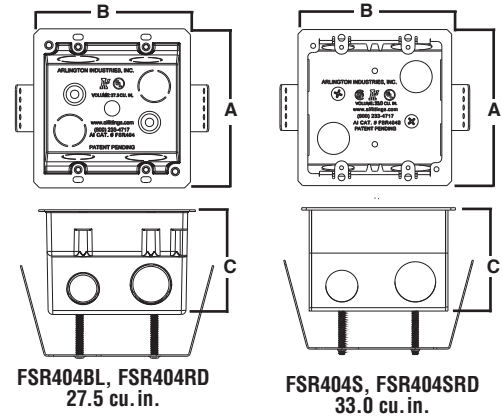
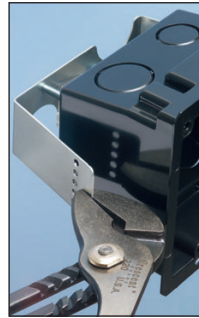
CATALOG NUMBER	UPC/DCI/NAED MFG #01 8997	DESCRIPTION/ BOX COLOR	UNIT/STD PKG	DIM A	DIM B	DIM C
FSR404BL	00596	Plastic 4x4 Box, Black	25	4.250	4.185	2.796
FSR404RD	00598	Plastic 4x4 Box, Red	25	4.250	4.185	2.796
FSR404S*	00597	Steel 4x4 Box, Plated	25	4.250	4.185	2.815
FSR404SRD*	00599	Steel 4x4 Box, Red	25	4.250	4.185	2.815
FSR404SD*	00600	Steel 4x4 Box, Divider	25	3.581	.141	2.750

*CSA listed.

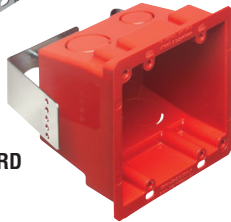
PATENT PENDING.



For wall thicknesses up to 1-1/4" – field modify bracket for thicknesses greater than 1-1/4".



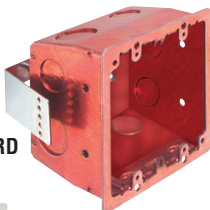
FSR404BL



FSR404RD



FSR404S



FSR404SRD

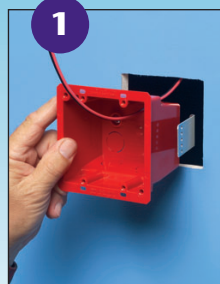


FSR404SD

Features and Benefits

- Non-metallic and steel versions in red are ideal for installations of fire alarms or signaling devices
- 1/2" and 3/4" knockouts
- Spring clip holds box securely against wall when screws are tightened
- Weight rating: 6 lbs. for walls; 10 lbs. for ceilings
- Non-metallic boxes include (2) NM94 cable connectors

Typical Installation of Low Voltage Fire Alarm Box using Red 4x4 Box

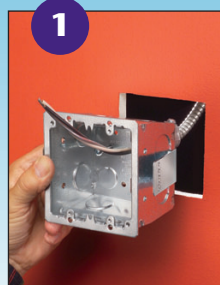


1
Determine position of device. Cut hole. Pull wire(s) through appropriate knockout (connector). Install box in opening. **FSR404RD** shown.

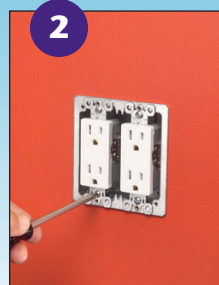


2
Install fire alarm (or other device) through the screw holes in the box.

Typical Installation of Device using Steel or Black Plastic 4x4 Box



1
Determine position of device. Cut hole. Pull wire(s) through appropriate knockout (connector). Install box in opening. **FSR404S** shown.

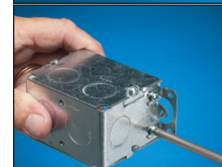


2
Install devices through the screw holes in the box.

Eliminate all this!...



Using two boxes...



Remove ears...



Position...



Drill and tap...



Add switch box support...