



Cable ID: CAT6 : WP-CAT6-PP-48 Patch Panel - 100M NST-CAT6-1000-BLK

Test Summary: PASS

Date / Time: 03/19/2019 03:22:55 PM

Operator: VERNON FURR

Model: DSX-8000

Headroom 9.0 dB (NEXT 36-78)

Software Version: V6.1 Build 3

Main S/N: 1830042

Test Limit: TIA Cat 6 Perm. Link (+All)

Limits Version: V7.1

Remote S/N: 1830132

Cable Type: Cat 6 U/UTP

Calibration Start Date:

Main Adapter: DSX-PLA804

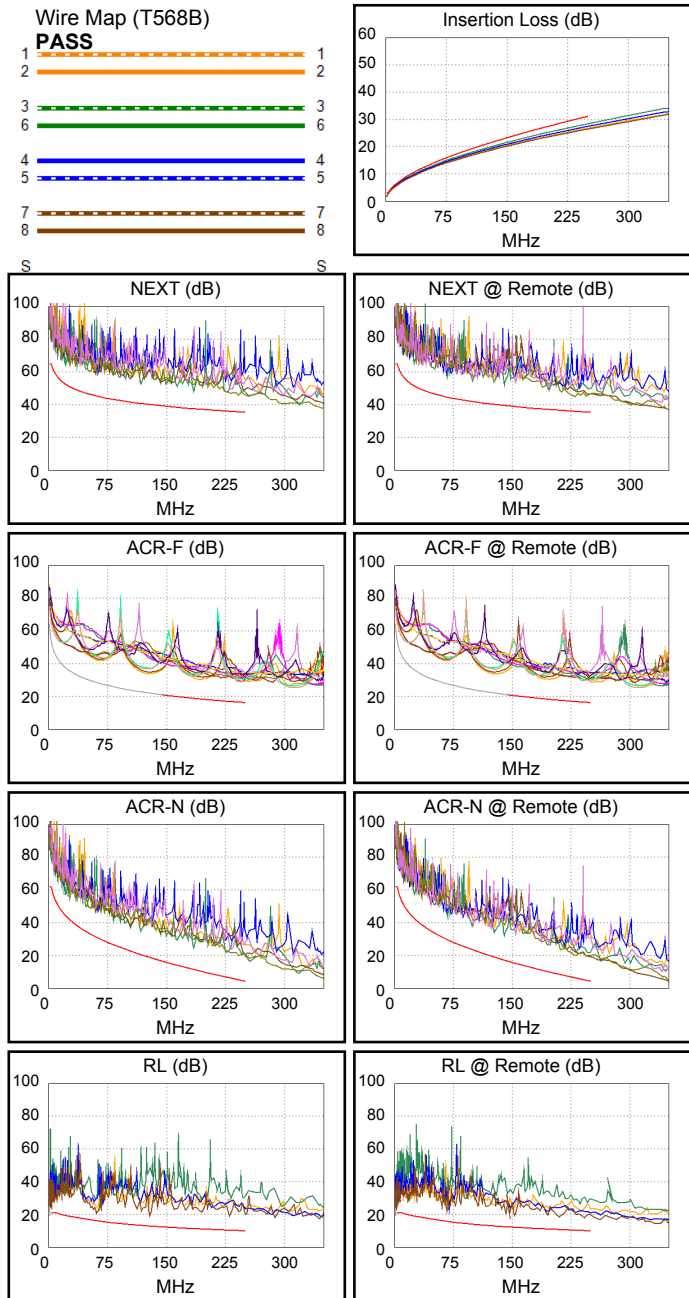
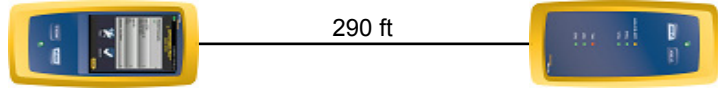
NVP: 69.0%

Main (Module): 09/17/2018

Remote Adapter: DSX-PLA804

Remote (Module): 09/17/2018

Length (ft), Limit 295	[Pair 78]	290
Prop. Delay (ns), Limit 498	[Pair 36]	449
Delay Skew (ns), Limit 44	[Pair 36]	21
Resistance (ohms), Limit 21.00	[Pair 36]	13.88
Resist. Unbal. (ohms), Limit 0.410	[Pair 78]	0.095
Resist. P2P Unbal. (ohms), Limit 0.480	[Pair 12-36]	0.072
Insertion Loss Margin (dB)	[Pair 36]	2.7
Frequency (MHz)	[Pair 36]	250.0
Limit (dB)	[Pair 36]	31.1



Worst Case Margin Worst Case Value

PASS	MAIN	SR	MAIN	SR
Worst Pair	36-78	36-78	36-78	36-78
NEXT (dB)	9.4	9.0	9.4	9.0
Freq. (MHz)	247.5	230.0	247.5	230.0
Limit (dB)	35.4	35.9	35.4	35.9
Worst Pair	36	36	36	36
PS NEXT (dB)	10.5	9.6	10.5	9.9
Freq. (MHz)	247.5	230.5	247.5	244.0
Limit (dB)	32.8	33.3	32.8	32.9

PASS	MAIN	SR	MAIN	SR
Worst Pair	78-45	78-45	45-36	12-36
ACR-F (dB)	11.2	11.1	12.5	13.1
Freq. (MHz)	6.3	4.8	244.0	250.0
Limit (dB)	48.3	50.7	16.4	16.2
Worst Pair	45	45	45	45
PS ACR-F (dB)	11.8	11.7	12.5	12.0
Freq. (MHz)	1.1	1.8	246.0	244.5
Limit (dB)	60.2	56.3	13.4	13.4

N/A	MAIN	SR	MAIN	SR
Worst Pair	12-45	36-78	36-78	36-78
ACR-N (dB)	12.4	13.2	14.0	14.1
Freq. (MHz)	21.6	230.0	247.5	244.0
Limit (dB)	44.3	6.3	4.5	4.8
Worst Pair	36	36	36	36
PS ACR-N (dB)	13.2	12.2	13.2	12.6
Freq. (MHz)	247.5	230.5	247.5	244.0
Limit (dB)	1.9	3.6	1.9	2.2

PASS	MAIN	SR	MAIN	SR
Worst Pair	78	78	78	78
RL (dB)	4.4	6.1	8.7	7.7
Freq. (MHz)	61.0	67.0	230.5	242.0
Limit (dB)	16.1	15.7	10.4	10.2

Compliant Network Standards:
 10BASE-T 100BASE-TX 100BASE-T4
 100BASE-T 2.5GBASE-T
 ATM-25 ATM-51 ATM-155
 100VG-AnyLan TR-4 TR-16 Active
 TR-16 Passive



Cable ID: CAT6 : WP-CAT6-PP-48 Patch Panel - 100M NST-CAT6-1000-BLK

Test Summary: PASS

Date / Time: 03/19/2019 03:22:55 PM

Operator: VERNON FURR

Model: DSX-8000

Headroom 9.0 dB (NEXT 36-78)

Software Version: V6.1 Build 3

Main S/N: 1830042

Test Limit: TIA Cat 6 Perm. Link (+All)

Limits Version: V7.1

Remote S/N: 1830132

Cable Type: Cat 6 U/UTP

Calibration Start Date:

Main Adapter: DSX-PLA804

NVP: 69.0%

Main (Module): 09/17/2018

Remote Adapter: DSX-PLA804

Remote (Module): 09/17/2018

	Worst Case Margin		Worst Case Value	
	MAIN	SR	MAIN	SR
PASS				
Worst Pair	36	36	36	36
TCL (dB)	3.7	2.9	7.0	6.2
Freq. (MHz)	4.8	4.8	250.0	210.0
Limit (dB)	39.8	39.8	14.0	15.2
N/A				
Worst Pair			12-36	78-36
CDNEXT (dB)			20.1	20.7
Freq. (MHz)			333.0	331.0
Limit (dB)				
N/A				
Worst Pair			36	78
CMRL (dB)			4.2	4.1
Freq. (MHz)			1.8	1.9
Limit (dB)				
PASS				
Worst Pair	36	12	78	36
ELTCTL (dB)	19.5	18.1	25.0	22.6
Freq. (MHz)	6.1	1.0	16.0	10.9
Limit (dB)	14.3	30.0	5.9	9.3

