



Enterprise-Level Security

Visualint™ Line High Capacity Series NVR

Enjoy all the best features of the Line Series, plus enterprise-grade storage and comprehensive control system integration. With a speedy Intel i7 processor and up to 48TB of additional hard drive space, this video management system is ideal for commercial locations or custom security systems. The Line HC series is also compatible with a range of hardware to suit your unique needs.

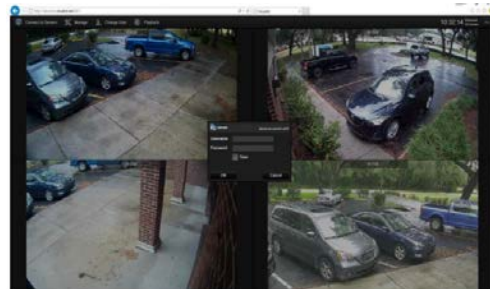


Network Video Recorder

Key Features



User-Friendly Observer UI



Flexible Enterprise-Grade Solution



High-Capacity Storage



Intuitive Mobile App

Product Details

Technical Specs & Features	VI-L-48TB VI-L-32TB VI-L-24TB
Channels	0 Expandable up to 32
POE Ports	None
Audio Inputs / Outputs	1-ch / 1-ch
Available On Internet	Internet Explorer 8.0 or above
Certifications	CE, FCC
Dimensions (W x H x D)	19" x 5.25" x 15.35"
Included Accessories	Power Cord x 1, Rack Mount Ears x 2
Operating Temperature	32° - 131° F
Power Consumption	430W Max
Rack Mountable	Yes, 3U
Weight	31 lbs 28 lbs 25 lbs
Supported Resolutions	Up to 4MP for IP Cam Resolution
Alarm Features Desc.	Motion Detection, Video Loss Detection, Pre/Post Alarm, Alarm Activated Recording, Analytic Trigger
Audio Backup	Yes
Audio Streaming	Yes, 2-Way
Alarm Contact Inputs/Outputs	None
DDNS Feature	Yes - visualint.systems
E-Mail Feature	Yes
ESATA Connection	None
Network / Ethernet Desc.	Ethernet: 10M/100M/1000M Network IP: Static/Dynamic Multi-Remote Client: Yes, 32 Clients Simultaneously, ONVIF: Yes, v2.4, Profile S
FTP Feature	Upload frame to FTP
Hard Drive Storage (Internal)	Internal SATA HDD bays x 3, External SATA HDD bays x 5, (5) 8TB HDD preinstalled, (1) 6TB HDD preinstalled, (1) 2TB HDD preinstalled (Windows OS), Maximum 48TB between all bays
Record Mode Desc.	Off / Continuous / Motion

