

Powerful Custom Control

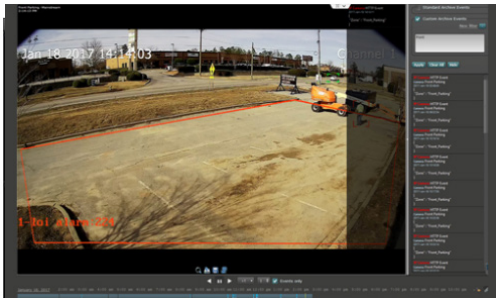
Visualint™ Line Series NVR

Our Line Series recorder offers a full video management system (VMS), a user-friendly interface, a smart search function, and Visualint viewer software. Plus, you can customize the number of channels you want to fit your location. It even supports over 4000 IP cameras from ONVIF-certified manufacturers.

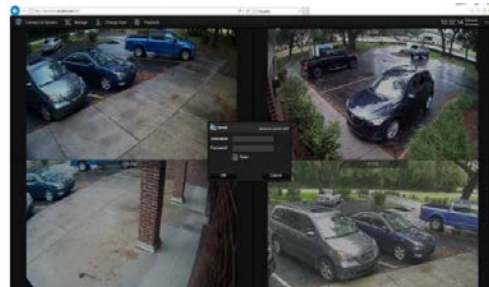


Network Video Recorder

Key Features



Choose Your User Interface



Compatible With Multiple Browsers



Clean, Finished Look



Intuitive Mobile App

Product Details

Technical Specs & Features	VI-L-32-8000R VI-L-16-6000R VI-L-8-2000 VI-L-4-2000R
Channels	32 16 (expandable up to 24) 8 (expandable up to 14) 4 (expandable up to 14)
POE Ports	None
Audio Inputs / Outputs	1-ch / 1-ch
Available On Internet	Internet Explorer 8.0 or above
Certifications	CE, FCC
Dimensions (W x H x D)	19" x 3.5" x 13.8"
Included Accessories	Power Cord x 1, Rack Mount Ears x (varies)
Operating Temperature	32° - 131° F
Power Consumption	430W Max
Rack Mountable	Yes, 2U
Weight	18.5 lb
Supported Resolutions	Up to 4MP for IP Camera Resolution
Alarm Features Desc.	Motion Detection, Signal Loss, Signal Restore, Audio Threshold Exceeded, Recording Error
Audio Backup	Yes
Audio Streaming	Yes, 2-Way
Alarm Contact Inputs/Outputs	None
DDNS Feature	Yes; visualint.systems
E-Mail Feature	Yes
ESATA Connection	None
Network / Ethernet Desc.	Ethernet: 10M/100M/1000M Network IP: Static/Dynamic Multi-Remote Client: Yes, 32 Clients Simultaneously ONVIF: Yes, v2.4, Profile S
FTP Feature	Upload frame to FTP
External USB Backup Device	Up to 128 GB
Record Mode Desc.	Off / Continuous / Motion

