



# ClareVision NVR Quick Start Guide

**CLR-V200-4PNVR1**  
**CLR-V200-8PNVR2**  
**CLR-V200-16PNVR4**

Complete NVR User Manual



<https://bit.ly/3tJssZv>

For maximum control and convenience, **your system should be connected to the Internet** via a local network router.

Internet connectivity allows you to use OvrC, a powerful remote maintenance service. See [www.ovrc.com](http://www.ovrc.com) for details.

**If your surveillance system is isolated from the Internet**, please download the technical reference manual for this product, which has a chapter that guides you through installation without using the web interface.  
<https://www.clarecontrols.com/helpcenter/clarevision-nvr-user-manual>

## Required Equipment

- The NVR and all cameras to be installed.
- Network connection for the NVR (Recommended).
- Admin rights to a network computer that can access the surveillance system.

## Additional Resources

You can acquire a PDF of the full NVR technical reference manual, hard drive installation guide, and other materials from [www.clarecontrols.com](http://www.clarecontrols.com) by visiting the Help Center.

If you are going to install extra hard drives on the recorder, do so now before beginning installation.



### Warning:

This product can expose you to chemicals including Cadmium which is known to the State of California to cause cancer, and Phthalates, which is known to the State of California to cause birth defects or other reproductive harm. For more information go to: [www.P65Warnings.ca.gov](http://www.P65Warnings.ca.gov)

## Box Contents

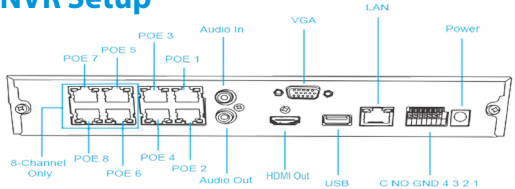
Aside from this guide, your packaging includes:

- ClareVision 4, 8, or 16 Channel NVR
- 4 hard drive screws
- 4 extra case screws
- USB mouse
- Power cord

## Safety Tips

- Handle this device with care.
- Do not strike or shake this device.
- Do not operate this device beyond its specified power source ratings.
- Protect the power cord from being stepped on or pinched, particularly where it connects to the device and to the power outlet.
- Do not drop items through the ventilation slots. If something falls inside the device, turn off the power immediately and contact qualified personnel for service.
- Do not expose this device to water or moisture. Moisture may damage the device and cause electric shock.
- Take immediate action if the device becomes wet: turn the power off and contact qualified personnel for service.
- Do not use this device in humidity above 85%.
- Do not use this device near any heat sources such as radiators, heat registers, stoves, or other such heat-generating equipment.
- If mounting in a closed space, include adequate ventilation. Do not block ventilation openings.
- The performance and lifespan of the hard drive is affected by temperature. Use this device in temperatures ranging from 14-131° F (14-55° C).
- Handle the hard drive with care.
- You can damage the hard drive if this device is moved while the hard drive is still spinning. If you must move the device, even just to reposition it, follow the shutdown procedure in the technical reference manual (available online) and wait at least 30 seconds before moving it.
- If servicing or exchanging the hard drive, protect it from static electricity. Use a grounded static wrist guard and mat to properly ground yourself and the hard drive.
- Do not use an electric screwdriver to remove or install a hard drive.
- Clean this device with a dry cloth. Do not use strong or abrasive detergents when cleaning the device chassis. If dirt is hard to remove, use a mild detergent and wipe gently.
- Make a note of the system settings and save them. This helps when changing the system configuration or with recovery if unexpected failure or trouble occurs.

## NVR Setup

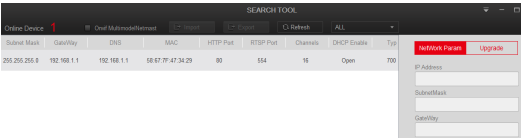


1. Connect an ethernet cable from your network router into the LAN port on the back of the NVR.
2. Connect the 12VDC power to the NVR via the port on the back. The NVR boots up.
3. The NVR utilizes DHCP to get an automatically assigned IP address on the network. Use the ClareVision app on mobile, or the IP Search Tool on a desktop computer to find this.
4. Click the **Search** button on the IP Search Tool and it displays a list of any ClareVision devices connected to the network, including the NVR.

**Note:** The IP Search Tool only works on Windows PCs.

5. Navigate to the NVR's IP address in a web browser. You can log in with the default username (admin) and password (**first six characters of the UUID**). You are prompted to change the password, and should do so. Choose a secure password that you will remember.

## Install and Run the IP Search Tool



Use the IP Search Tool to locate your surveillance hardware and set up communications. This is a Windows-only utility.

1. Visit [www.clarecontrols.com/helpcenter/ip-search-tool](http://www.clarecontrols.com/helpcenter/ip-search-tool) and download the IP Search Tool installer.
2. Run the installer. Click through and accept the default settings.
3. Connect your PC to the network then run the IP Search Tool. Click on the **Search** button on the bottom of the program and it will search the network for all ClareVision products.

If your NVR does not appear, ensure that your network connections are secure and that the unit is powered up, then click the **Search** button again.

4. Click on the entry for your NVR to view its details. If desired, you may change parameters here. After you make changes, enter the administrative password for the NVR, and click the **Modify** button to save those changes.

## Edit the Network Settings

NIC Settings

Enable DHCP ☒

IP Address

Network Mask

Gateway

TCP Port

RTSP Port

HTTP Port

Private Port

MAC Address

DNS

Primary DNS

Secondary DNS

Internal Net Card IP

Internal Net Card IP

Save

To change the network settings at a later date, consult the NVR Manual.

1. Navigate to the NVR's IP address in a web browser.
2. Log into the web interface.
3. Click **Configuration** in the top navigation bar.
4. Click **System**, then navigate to Network.
5. In this page you can edit the following settings:
  - IP Address
  - Network Mask
  - Gateway
  - TCP Port
  - RTSP Port
  - HTTP Port
  - Private Port
  - Mac Address
  - Primary and Secondary DNS
  - Internal Net Card IP

**Caution:** Editing the Internet Net Card IP setting may halt communication from the NVR to paired cameras, requiring manual network reconfiguration for each camera.

Install Browser Plug-In

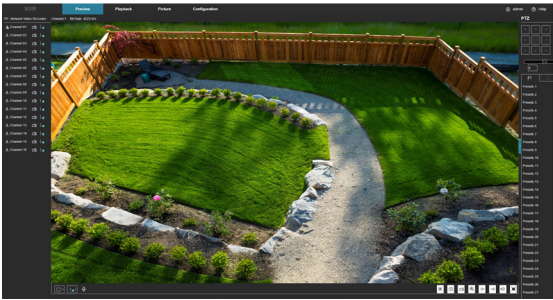
The browser plug-in lets you view videos and change certain settings in the web interface.

- 1. In Internet Explorer, navigate to your NVR's IP address.
- 2. Log in to the web interface.
- 3. Download web plug-in when prompted. You will need to close all instances of Internet Explorer.
- 4. Locate the file in your download folder and run the .exe file.
- 5. Follow the on-screen prompts to install the plugin.
- 6. In Internet Explorer, navigate back to your NVR's IP address.
- 7. Log into the web interface.

You now have access to live video streams, video playback, and NVR settings.

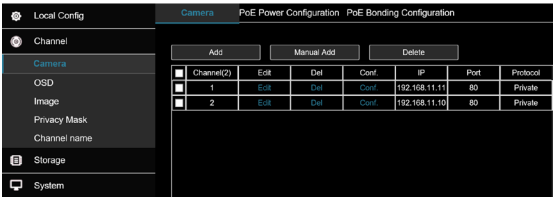
Verify Camera Connections

The browser plug-in lets you view videos and change certain settings in the web interface. Please note, if setting up cameras using the manual add method, utilize the "Private Protocol" setting found on the Manual Add screen. This allows ClareVision cameras to communicate with the NVR and deliver all of the features associated with them.



- 1. Log into the web interface. You will be presented with the "Preview" window.
- 2. Click the **Play** button at the bottom of the screen. The live feed from each camera connected to the NVR begins to play.

If any of the feeds do not play, verify the cameras are powered on and connected to the local network or NVR.

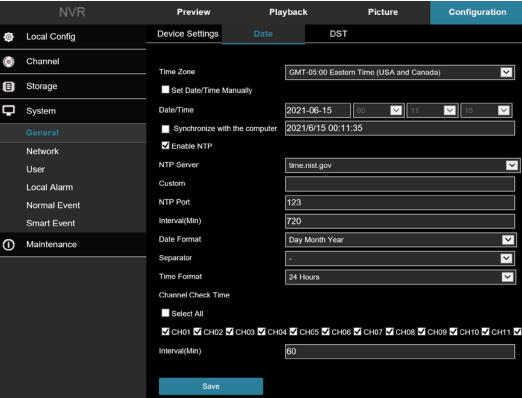


Click on **Configuration** on the top navigation bar, then click **Channel**, then **Camera**. You are presented with a list of all ports on the NVR. If any of the cameras are not playing, click on the **Edit** link in that port's listing to modify its network settings as needed.

**Note:** If you are attaching ClareVision cameras that were previously standalone on the network, you can add them to the NVR via plug and play. Simply plug in the camera and the private protocol will negotiate the connection with the camera without the need to put in custom password. For more information on this process, please visit: <https://www.clarecontrols.com/helpcenter/clarevision-cameras-user-manual>

Calibrate the System Time

The browser plug-in lets you view videos and change certain settings in the web interface.



- 1. In the **Configuration** tab, click on **System**.
- 2. Under the system tab, click on **General**.
- 3. Click **Date**.
- 4. On the top of the page, click the **Time Zone** drop down menu and select your time zone.

-OR-

Check the box labeled **Enable NTP** and fill out the fields below for automatic time synchronization.

- 5. Click **Save** at the bottom.

**Note:** For Daylight Savings Time, click on the **DST** tab and check the box labeled **Enable DST** and modify all fields in accordance with local customs.

Camera Passwords

When the ClareVision NVR is activated, plug and play takes the camera's password if it is a ClareVision camera. If the camera is defaulted when plugged into the NVR, the password will be the **first 6 characters of the UUID**.

If you add a camera manually, you must enter the camera's password.

To add a camera manually, in the **Configuration** tab, click on **Channel > Camera**.

You are presented with a list of ports. Click **Edit** on the port that you wish to modify. You are presented with a popover that contains the following fields:

- IP address
- Protocol
- The camera's management port
- The camera's username and password
- Set Adding Method to manual



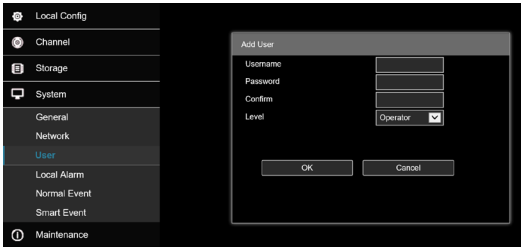
Change each field to match the camera's set values. The camera password can only contain numbers and letters; no spaces or special characters.

For added security, use a password that is long and easy to remember.

Create User and Set Password

In the **Configuration** tab, click on **System > User**.

Click the **Add** button. Enter the new account's username and password.



We recommend that you add accounts by individual user's names. If someone reboots the system or erases a log, you know which user did it.

Choose the account's level. There are two levels for users: **Operator** and **General**. The only difference is their default permissions.

You can customize permissions for each account individually. See the technical reference manual (available online) for more details.

Finalization

Using the web console, you can customize system settings to fit the customers needs:

- Set protocols for remote computers when they log in to the surveillance system.
- Change the camera's frame rates to manage hard disk space.
- Set a custom recording schedule.

- Arrange for the system to send alert emails when an alarm is triggered.
- Create privacy masks.
- Set up alarms to trigger from the camera and vice versa.

For more information about the NVR's capabilities, visit [www.clarecontrols.com/helpcenter/clarevision-nvr-user-manual](https://www.clarecontrols.com/helpcenter/clarevision-nvr-user-manual) for the full manual.

Support:

**Need help? Contact Tech Support!**

If you need further clarification, please contact our support staff.

**Integrator/Dealer Support:** 941.404.1072  
claresupport@clarecontrols.com

For more information, instructional videos, or support documentation, visit our Help Center at: <https://www.clarecontrols.com/helpcenter>.

Warranty:

Clare Controls offers a two (2) year limited warranty on original Clare Controls components, from the date of shipment from Clare Controls. To view complete limited warranty details, including limitations and exclusions, [www.clarecontrols.com/warranty](https://www.clarecontrols.com/warranty).

Contact Information:

**Clare Controls, LLC.**

7519 Pennsylvania Ave, Suite 104  
Sarasota, FL 34243  
General: 941.328.3991  
Fax: 941.870.9646  
[www.clarecontrols.com](https://www.clarecontrols.com)

NVR Information:

Please provide this guide to the customer and notate the camera installation location and new camera password. This guide includes important camera details.

NVR Password: \_\_\_\_\_

NVR Details:

