

Viewing and Recording Wirepath IP cameras with Milestone:

1. Log in to your Wirepath IP camera to verify that these settings are correct before beginning.
 - a. Click 'Config' on the Live View screen to enter the Config menus.
 - b. Click 'IP Settings'.
 - c. Enable RTSP Server.
 - d. Under 'ONVIF', select 'v2.20'.
 - e. Click 'Apply'.

The screenshot displays the configuration interface for a Wirepath IP camera. The left sidebar contains a navigation menu with categories: System (System Information, User Management, System Update, IP Settings, Advanced, PPPoE & DDNS, Server Settings), Network (Image Settings, Video Settings), A/V Setting (Audio Settings), and Event (Event Settings, Schedule, I/O Settings, Log List, SD Card). The 'IP Settings' menu item is circled in red. The main content area is titled 'IP Setting' and includes the following sections:

- IP Assignment:** Radio buttons for DHCP and Static (selected). Fields for IP Address (10.106.1.95), Subnet Mask (255.255.255.0), Gateway (10.106.1.1), DNS 0 (216.136.95.2), and DNS 1 (0.0.0.0).
- Port Assignment:** Fields for Web Page Port (80) and HTTPS Port (443). A 'HTTPS Setting' button is present.
- UPnP:** Radio buttons for UPnP (Enabled) and Disabled. Radio buttons for UPnP Port Forwarding (Enabled) and Disabled (selected).
- External Web Port:** 80
- External HTTPS Port:** 443
- External RTSP Port:** 554
- RTSP Setting:** Radio buttons for RTSP Server (Enabled) and Disabled. A dropdown for RTSP Authentication is set to 'Disable'. Fields for RTSP Port (554), RTP Start Port (5000), RTP End Port (9000), and their respective ranges.
- Multicast Setting (Based on the RTSP Server):** Fields for Streaming 1 (IP: 234.5.6.78, Port: 6000, TTL: 15) and Streaming 2 (IP: 234.5.6.79, Port: 6001, TTL: 15).
- ONVIF:** Radio buttons for ONVIF (v2.20 selected), v1.01, and Disabled. Radio buttons for Security (Enabled) and Disabled. Radio buttons for RTSP Keepalive (Enabled) and Disabled.
- Bonjour:** Radio buttons for Bonjour (Enabled) and Disabled (selected). Field for Bonjour Name (IP_Camera).
- LLTD (Link Layer Topology Discovery):** Radio buttons for LLTD (Enabled) and Disabled.

An 'Apply' button is located at the bottom right of the configuration area.

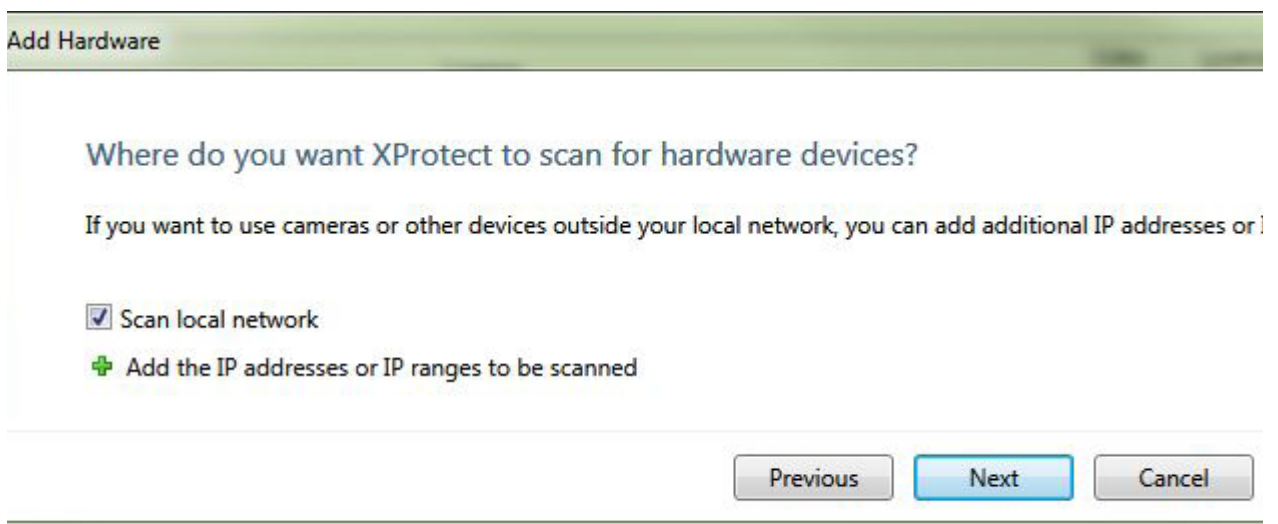
- Open the Milestone XProtect Software. In the left-hand navigation panel, expand the 'Surveillance Server' tree, and then 'Advanced Configuration'. Right-click 'Hardware Devices', and select 'Add New Hardware Device'.



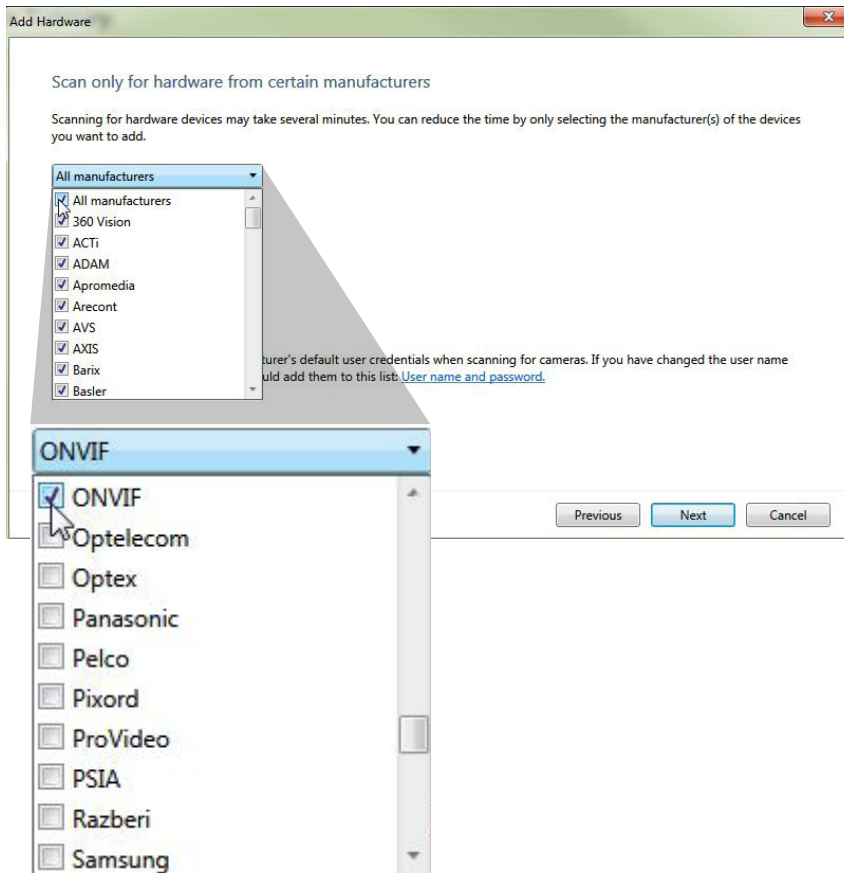
- Select 'Scan for Hardware'.



- Check 'Scan Local Network' and click 'Next'.

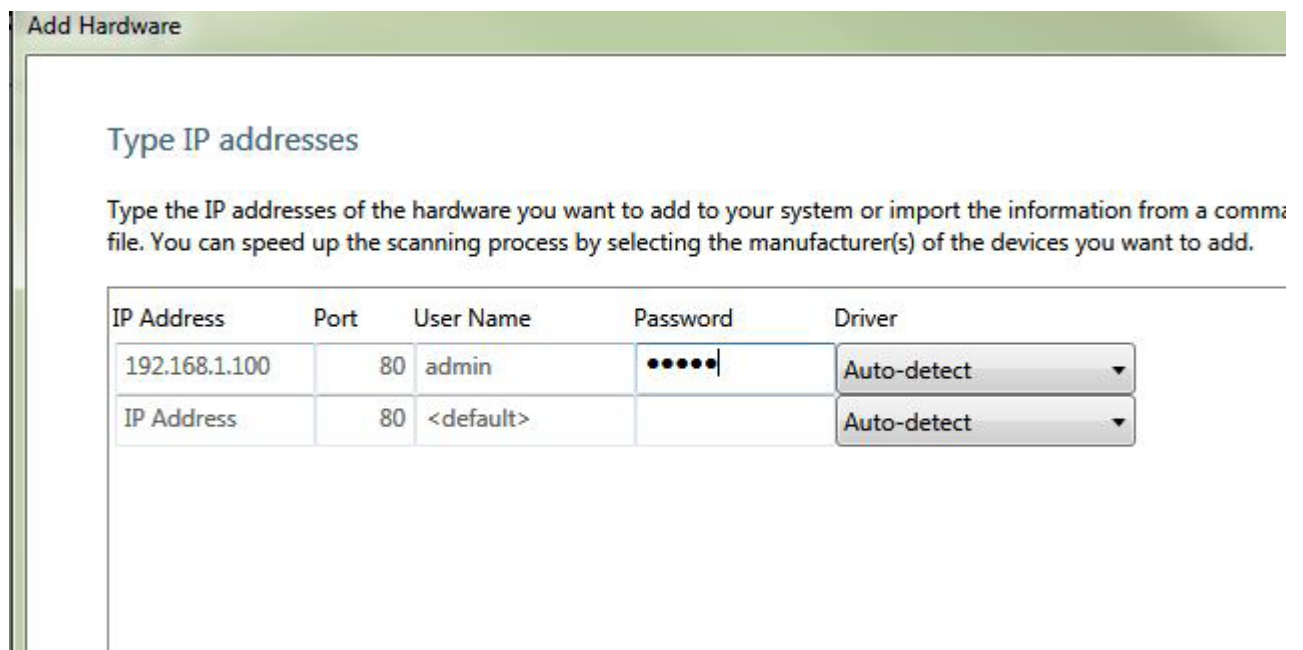


5. Uncheck 'All Manufacturers'. Check 'ONVIF', then click 'Next'.



6. If the IP cameras are found, skip to step 7. If not, select 'Add New Hardware Device' from step 2, select 'Manually specify the hardware to add' then proceed to step 7.
7. Select the device, or manually fill in the IP address, username, and password.

Note: For Wirepath IP cameras, the default username is 'admin', and the default password is 'admin'.



- Verify your information is correct. Status should display 'Connected'.

Verification process completed.

IP Address	Port	User Name	Password	Driver	Status
192.168.1.100	80	admin	•••••	ONVIF Conformant Dev	Connected

- Click 'Save', and view the connected camera by expanding the 'Hardware Devices' tree, 'Hardware Device 1' tree, and then select 'Camera 1'.

4:28:10 PM You have made changes to the configuration. Save the changes to apply them to the system.

Camera Settings Summary:

Enabled	Camera Name	Properties	Video Format	Record on	Retention Time	Recording Path	Archiving Path
<input checked="" type="checkbox"/>	Camera 1	Open	MPEG	Motion Detection	5 Day(s)	C:\MediaDatabase\	C:\MediaDatabase\

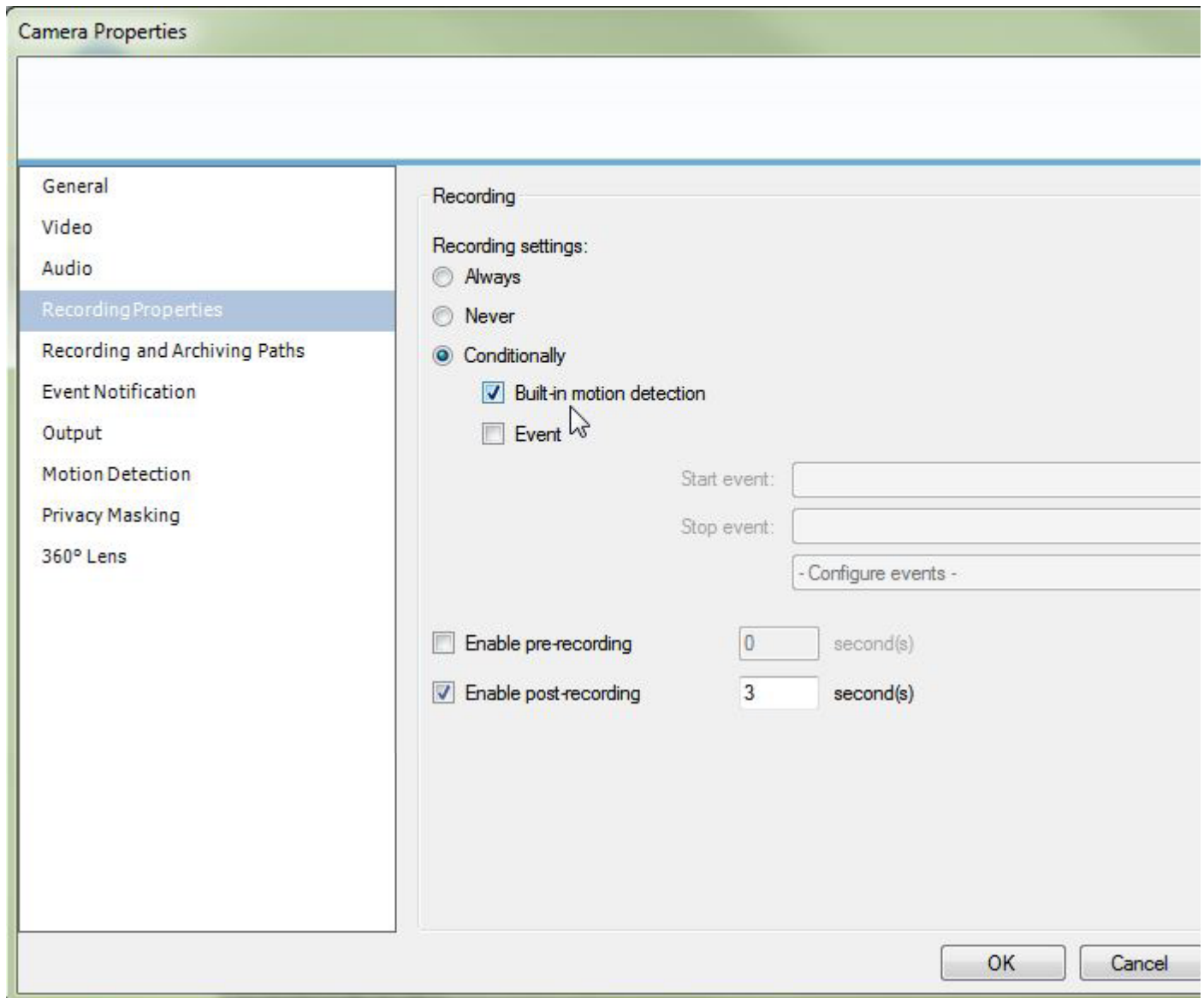
FEB 03 2014 17:24:00

- To verify correct motion detection settings for the newly added camera, click 'Open'.

Camera Settings Summary:

Enabled	Camera Name	Properties	Video Format	Record on	Retention Time	Recording Path	Archiving Path
<input checked="" type="checkbox"/>	Camera 1	Open	MPEG	Motion Detection	5 Day(s)	C:\MediaDatabase\	C:\MediaDatabase\

11. Click 'Recording Properties'. Check 'Built-in motion detection' to record only when motion events occur.



Now the cameras are ready to record and monitor at your convenience. If you have any questions or need further assistance with the Xprotect software, contact Milestone for support. For any questions directly related to Wirepath products, contact SnapAV Tech Support.

Contacting Tech Support:

Phone: (866) 838-5052
E-mail: support@snapav.com