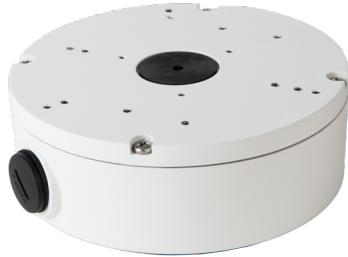


# Install Guide for Visualint Junction Boxes

## 1. About This Guide

This guide is for both the VI-JB and the VI-JBR junction boxes. Where the two mounts have similar procedures, the text is centered. Where they diverge, the text splits into left and right columns.

VI-JBR



## 2. Compatibility

This junction box can be used with a variety of Visualint camera models: VI-M-1350, VI-M-1450, VI-3000-BUL, VI-M-1550, VI-M-3140.

This junction box also can be used with other Visualint cameras when those cameras are attached via a mount.

## 3: Box Contents

Your junction box includes the following:

- Wall box housing with attached faceplate
- 2 rubber cable glands
- Cable conduit plug
- Cable conduit assembly
- 3 wood screws with anchors and rubber washers
- 4 long and 4 short M4 machine screws
- 3 M3 machine screws
- Self-adhesive drill template
- Zip tie

### Other Required Equipment (*not included*)

- Camera (and mount, if desired)
- Phillips screwdriver
- A large flathead screwdriver (or a quarter)

VI-JB



## 2. Compatibility

This junction box can be used with Visualint PTZ cameras (models 7000, 7230, and 7650) with an attached arm mount. If the arm mount does not fit snugly against the junction box, use the washers in this box with the mount arm screws for a secure installation.

This can also be used with other Visualint cameras when supplemented with the Visualint pendant mount.

## 3: Box Contents

Your junction box includes the following:

- Wall box casing
- Wall box faceplate
- Removable hinge pins
- 2 steel cable conduit plugs
- Cable conduit assembly
- 2 hex wrenches
- 4 wood screws with anchors
- 4 large M8 machine screws for attaching mounts.
- 4 steel washers.

### Other Required Equipment (*not included*)

- Camera
- Phillips screwdriver
- A large flathead screwdriver (or a quarter)

## 4: Inspection

**Before you start**, ensure that the hardware is in good condition and all assembly parts are included.

Check that the mounting surface is strong enough to hold three times the weight of the mount and camera.

- **If installing on a cement surface**, use the included expansion anchors to install the mount.
- **If installing on a wood surface**, use the wood screws included to secure the mount.

Keep all equipment powered off during installation.

**Important Note:** To avoid damaging the lens and lens cover of your camera during installation, keep it away from walls and other objects until after the camera is installed.

If the product does not assemble properly, please contact technical support.

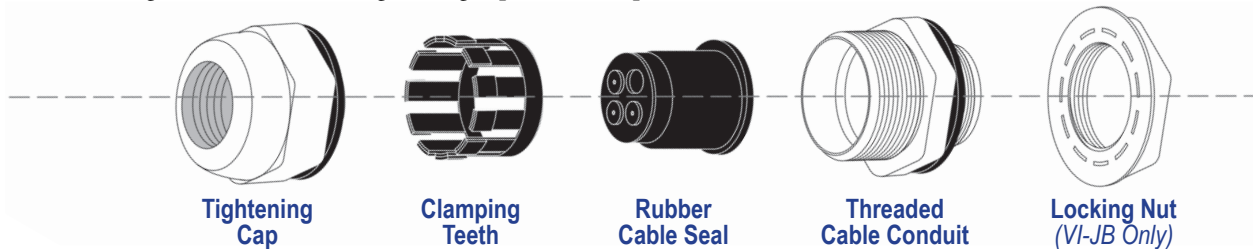
## 5: The Cable Conduit

Remove the rubber cable seal from the cap and conduit. Remove the clamping teeth from the cable seal.

Pass the cable(s) first through the tightening cap and clamping teeth.

The rubber cable seal has holes for several category cables (4 in the VI-JB, 2 in the VI-JBR). Pass the cable(s) through the holes, and leave any unused holes plugged.

Insert the rubber cable seal into the clamping teeth. Terminate the cabling and adjust it to your desired length, then secure the tightening cap for a waterproof seal.



## 6: Remove the Faceplate

Loosen the 4 screws holding the faceplate to the base (do not remove them completely). Remove the faceplate. **Ensure that you do not lose the rubber gasket** as it is required for waterproofing.

## 6: Remove the Faceplate



Installation is much easier if you first detach the faceplate from the casing.

To do so, use a large screwdriver to unlock the hinge pins and swing them out. Then you can slide the pins out of the hinges and remove the faceplate.

## 7: Installation Process

1. Run your camera wire through the proper cable gland, then insert the gland into the front of the faceplate.
2. Attach the camera.
3. Insert the threaded cable conduit (with its rubber washer) into the box and secure it tightly. Insert the cabling and cable seal assembly, and tighten for a waterproof seal.
4. Attach all wiring. Ensure the other access hole is sealed by the conduit plug.
5. Secure the faceplate to the junction box.
6. Be sure to seal any exposed, unused screw holes.

## 7: Installation Process

1. Attach the camera to the desired mount.
2. Attach the camera and mount to the faceplate.
3. Place the faceplate in position on the casing, and slip the locking hinge bolts back into the hinges (you do not need to lock them at this time). This allows the faceplate to hang so you can finish wiring easily.
4. Insert the threaded cable conduit (with its rubber washer) into the box, secure it tightly, and screw the locking nut into place. Insert the cabling and cable seal assembly, and tighten for a waterproof seal. Attach all wiring. Ensure all other access holes are sealed by conduit plugs.
5. Secure the faceplate to the junction box.
6. Be sure to seal any exposed, unused screw holes.

## 8: Support

If you need help, email [TechSupport@SnapAV.com](mailto:TechSupport@SnapAV.com). For more information, instructional videos, support documentation, or ideas, visit our website at [SnapAV.com](http://SnapAV.com).

### 3-Year Limited Warranty

This Visualint product has a 3-Year Limited Warranty. This warranty includes parts and labor repairs on all components found to be defective in material or workmanship under normal conditions of use. This warranty shall not apply to products that have been abused, modified or disassembled. Products to be repaired under this warranty must be returned to a designated service center with an assigned return authorization (RA) number. Contact technical support for an RA number.

Copyright ©2017 SnapAV. All rights reserved.

Version 190425-0845