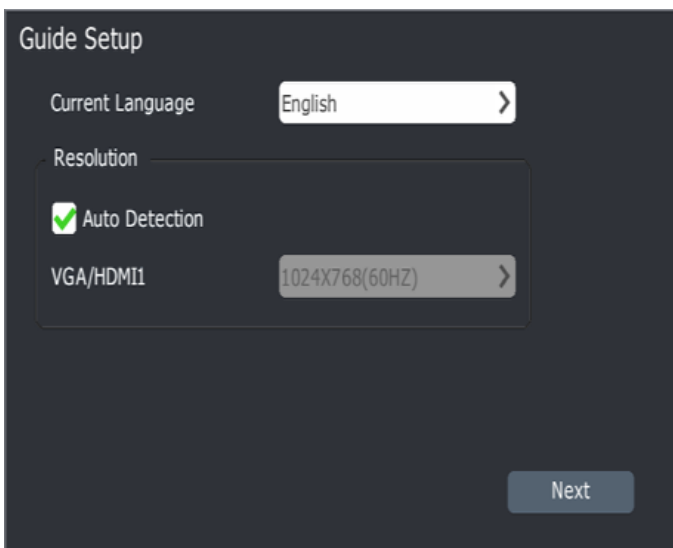
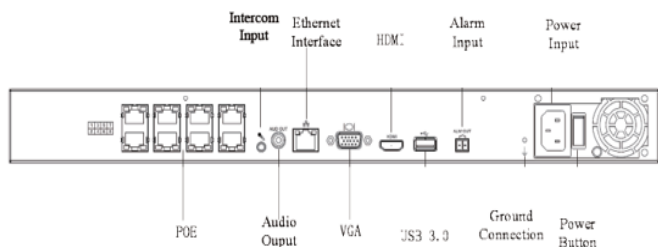
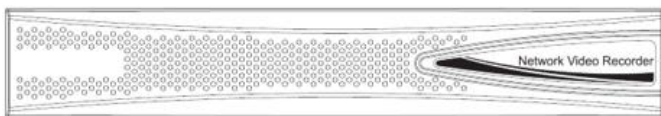


Mini Maxx Quick Guide



Quick Setup Guide

The Mini Maxx NVR comes with a built in PoE Switch. The NVR is primarily designed for our VIM Cameras; however, if preconfigured any Onvif compatible camera can be connected. VIM cameras are automatically added to the switch through the quick guide setup menus on the NVR.

Before starting the Mini Maxx NVR, please make sure ground protection is in place and an external monitor, mouse and keyboard are connected.

Select the Current Language to English. Check the Auto Detection box and confirm your video settings.

Confirm all of your cameras are connected to the onboard PoE switch, and click to confirm you would like to run the Config Guide now.

Note: The Config Guide will auto add all VIM cameras connected to the onboard PoE Switch. This process may take several minutes.

Permission Identification

Login as Administrator

ID

Password

Time&Time Zone Setup

Time Zone

Time

Network Setup

NIC 1 NIC 2

MAC Address

Auto obtain IP address via DHCP

Manual setup IP address

IP Address

SubNet Mask

Gateway

Manual Setup DNS

Preferred DNS

Reserved DNS

Quick Setup Guide

Login as an Administrator.

Default login: admin

Default password: admin

Click Confirm.

Set your Time Zone

Confirm the Time is correct.

Click Next.

EST = GMT-0500

CST = GMT-0600

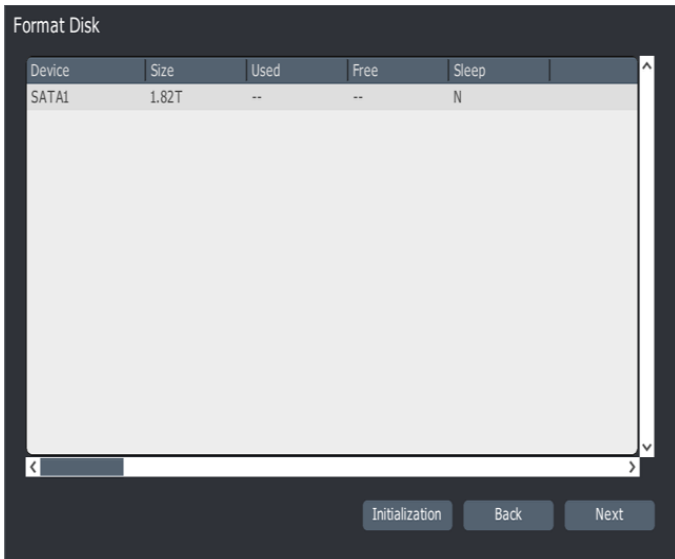
MST = GMT-0700

PST = GMT-0800

Set your static IP address for your Mini Maxx NVR outside of the DHCP range of your Router.

Note: Confirm IP address is available either with your site contact or using the ping command to confirm no other device is assigned the desired IP address.

Enter the appropriate information in the provided boxes and click next.

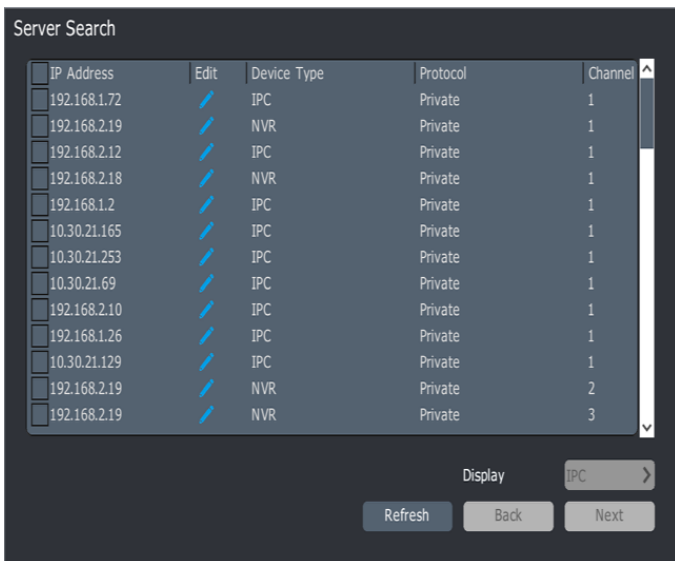


Quick Setup Guide

Before video can be recorded to the NVR, the hard drive needs to be initialized and formatted. All hard drives must be initialized to enable recording.

Click Initialization and wait for completion.

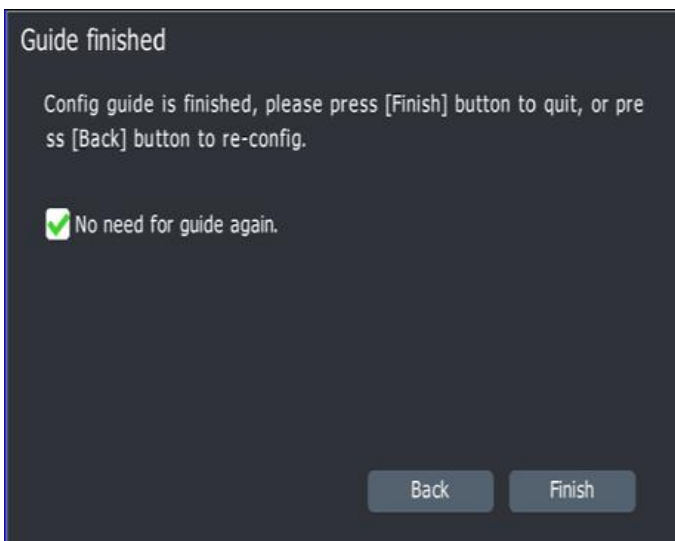
When complete Click Next.



Once the Search has completed, the list of devices connected to the NVR will be displayed.

Check the box next to the cameras you would like to add to the NVR.

Click Next



Once completed the guide will automatically add the VIM cameras connected to the onboard PoE switch.

Click Finish.

Need Help??

Contact Support
 941-225-4925 US
 +44 1905570599 UK
 support@visualint.net