

## Quick Start Guide

WPS-750-DOM-IP  
IP Surveillance Cameras



## I. Hardware Setup

(See other side for software and network setup)

Thanks for purchasing a Wirepath™ IP Surveillance Camera. This Quick Start Guide page shows the basics of installing the camera in its location, and preparing to connect to it from the network.

### Package Contents

- (1) WPS-750-DOM-IP Camera
- (1) WPS-ACC-PWR Power Adapter
- (1) Foam Gasket
- (1) Female-Female RJ45 Adapter
- (1) 3mm Allen key
- (4) Screws & Wall Anchors
- (1) Spare Silica Pack
- (1) Quick Start Guide

### IMPORTANT! BEFORE GOING TO JOB SITE:

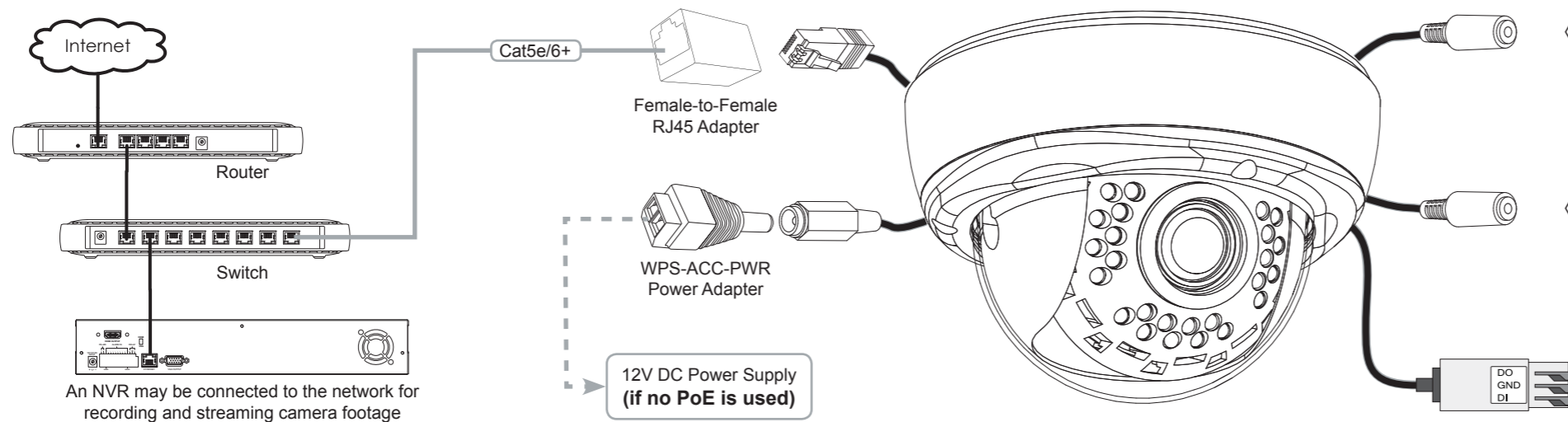
Visit the Support Tab on the product page for this camera at [www.SnapAV.com](http://www.SnapAV.com). Download the latest support files to your PC:

- Installation Manual
- IP Installer utility software
- Latest firmware (if available)

Contact the Tech Support team from the job site for help with any part of setup:

Call: 866-838-5052

Email: [TechSupport@SnapAV.com](mailto:TechSupport@SnapAV.com)



T	(Tip)	Positive (+)
R	(Ring)	NOT USED
S	(Sleeve)	Common (-)

**Audio Out (Green)**  
Connect a 1/8" (3.5mm) stereo-mini cable to an amplifier input to send audio out from the camera's web interface.

T	(Tip)	Positive (+)
R	(Ring)	NOT USED
S	(Sleeve)	Common (-)

**Audio In (Pink)**  
Connect a 1/8" (3.5mm) stereo-mini microphone to send audio out from the camera over the recording stream.

DO	(Output)	Switched
GND	(Ground)	Common (-)
DI	(Input)	Contact

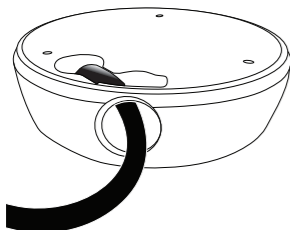
**Relay Contacts**  
Monitor the state of a contact closure (DI) or control a device via relay (DO) during motion and alarm events.

DO — Max +5V DC 50mA

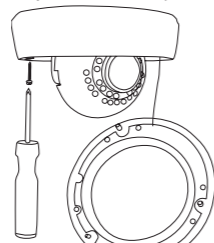
## 3 Camera Mounting

**Needed for this step:** Camera, foam gasket, included fasteners and screws (for surface mounting) or Wirepath™ Camera Mount from [www.SnapAV.com](http://www.SnapAV.com)

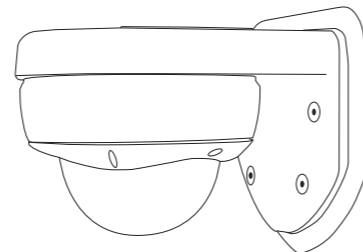
- a. Connect the camera to the wiring. (Connections may be pulled through the side plug in the housing for side exit applications.)



- b. Use the foam gasket as a template for the screw holes, then remove the backing and attach it to the camera. Mount camera using included screws & wall anchors (3 required, 1 spare included).



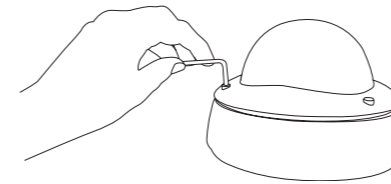
**OR**, attach the camera to a Wirepath™ Surveillance Camera Mount. See instructions included with the mount.



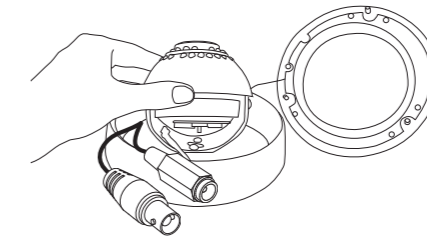
## 1 Prepare the Camera for Installation

**Needed for this step:** 3mm Allen Key, MicroSD Card (optional for local backup)

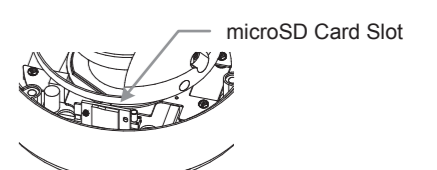
- a. Unpack the camera and open the dome. Leave the plastic protective film on the dome.



- b. Pull the test adapter out if it will be used for setup. The lens gimbal should pivot with some friction.



- c. Install a micro SD card if local backup is required. (pivot lens to access the slot)



## 2 Camera Cabling and Power

**Needed for this step:** Cables and connectors as indicated below, tools and connectors for terminations

**Network Connection** - The camera must be connected to a LAN port using cable that meets TIA/EIA Category 5e standards. Test the cable after termination if possible.

**Requirements for Network Cable:**

- Type: Cat5e/6+ ONLY
- Terminations: 568B (recommended)
- Max Length: 100 meters (328 feet)

**PoE Power** - If the network equipment supports PoE standard IEEE 802.3af then power can be provided on the Cat5e/6 connection.

**Requirements for PoE Equipped Port:**

- Voltage: 44V DC
- Wattage: 15.4W
- Amperage: 350mA

**12V DC Power** - If PoE is not used, power must be supplied using the external power connector. The correct cable size must be used to prevent voltage drop.

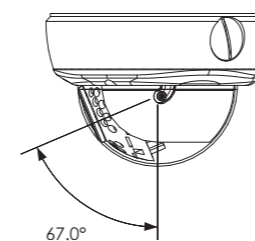
**Requirements for Power Supply:**

- Voltage: 12V DC
- Wattage: 12W
- Amperage: 1A

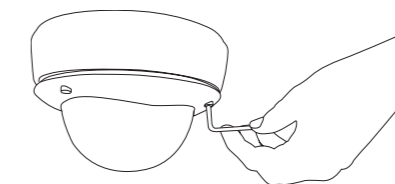
## 4 Final Adjustments

**Needed for this step:** 3mm Allen Wrench, WPS-CCTV-TESTER or similar monitor for positioning camera

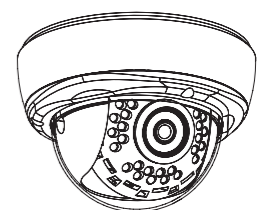
- a. Connect a test monitor to the camera's integrated test adapter BNC and power tails. Set the camera view as desired, without exceeding the adjustment limits.



- b. After adjustments are made, open and insert the spare silica pack behind the gimbal, then close the camera dome and tighten the screws. Avoid pinching the dome retention wire in the gasket.



- c. The outer protective film may now be removed from the camera. Use an eyeglass cloth to clean the camera. See the opposite side for software setup.



## II. Network Setup - Identifying Cameras

**Wirepath™ IP Installer** utility software streamlines identification of the cameras on the network and allows basic IP settings to be established. After the cameras are set up, they can be accessed over the local network by computers and NVRs.

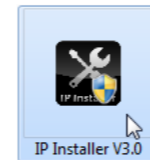
**Important!** The IP Installer can only be used on a PC with a Windows operating system.

### 1 Initial Setup

- Make sure that all cameras are connected to the network and powered on.
- Get access to a PC connected to the local network with administrator rights in the operating system (must be a Windows PC to use the IP Installer)
- Disable any active VPN connections on the network. These will prevent the IP Installer from working correctly.
- Download the IP Installer utility from the camera's support tab at [www.SnapAV.com](http://www.SnapAV.com). No installation is required for use. Extract the software (if compressed in ".zip") and move it to the Desktop or folder of your choice.
- Log into the router, set up static IP addresses for each new camera, and record the network settings to be assigned to the camera(s).

### 2 How to Use the IP Installer Utility

- Double-click the IP Installer icon to run the software. Allow or accept any Windows system warnings. (No changes will be made to system files.) Depending on the computer's security settings, it may be necessary to log in using the computer's administrator account for the IP Installer to run.
- Click "**Search Device**" to scan the network for connected Wirepath™ IP Cameras, NVRs, and Encoders. Wait 30 seconds after powering up a camera to search for it.
- Click the "**Exit**" button to close the IP installer when all devices are configured.

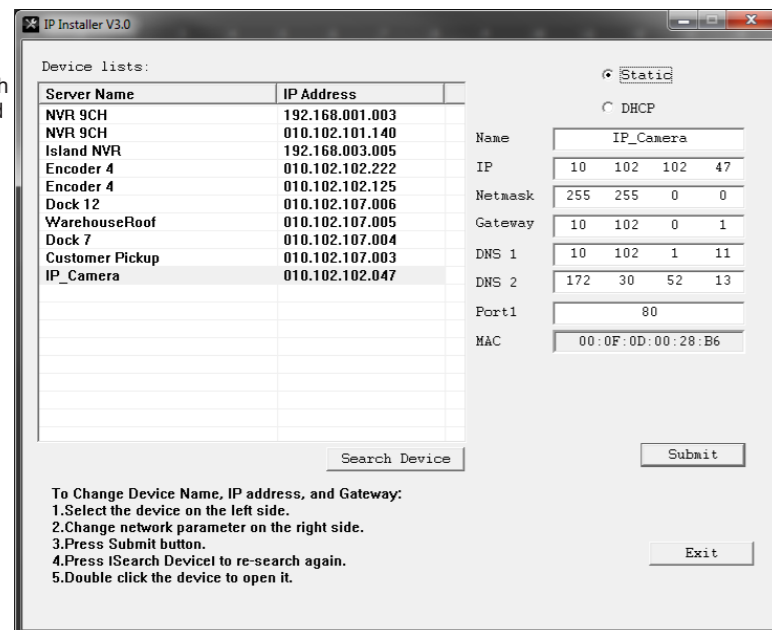


**Important!** Windows may display an error stating that the software did not install correctly when it closes, but this should be disregarded.

### 3 How to Configure a Camera for Access

Cameras are set to DHCP mode by default so that an IP address is automatically assigned for first time access. To ensure continuous access to the camera, the address must be changed to a static address reserved for the camera (as detailed in step "1e", above).

- Click on an item in the Device List to highlight it blue.
- Click the "Static" button over the right column information fields. Now the settings can be configured. (IP Settings fields are greyed out until the mode is set to Static). Enter a value for each of the fields in the right column:



#### Device List

Displays the Wirepath IP devices connected to the network.

#### Search Device-

Click the button to refresh the Device List and see new devices.

- Select "**Static**" to change settings.
  - Name** for the camera (limited to 31 characters, no spaces)  
Examples: FrontDoor1, SideDoor
  - IP address** (static) reserved for the camera (step 1e)
  - Net Mask** - usually 255.255.255.0 (set all cameras the same)
  - Gateway** address - found in the router.
  - DNS 1** - found in the router
  - DNS 2** - found in the router.  
**Set DNS 2 to "0.0.0.0" if no DNS 2 is set in the router.**
  - Port** - include the last octet of the IP address in the port:
- Examples:**
- | Camera     | IP Address    | Port |
|------------|---------------|------|
| Patio      | 192.168.1.050 | 8050 |
| Front Door | 192.168.1.100 | 8100 |
- Click "**Submit**" to update the camera settings.

## III. Accessing Cameras on the Network

### First Time Access

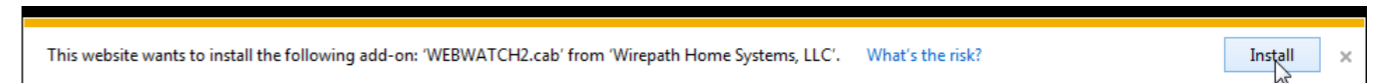
The first time the camera is accessed from any PC, a plug-in must be installed for the web browser to enable communication with the camera. Afterward, the camera may be accessed by that PC at any time by navigating to the camera's web address and logging in.

- Connect the PC to the same local network (LAN) the camera is connected to.
- Open the web browser and enter the IP Address that was assigned to the camera. The address should include the port number assigned to the camera if one was set. See the example:
  - IP Address using default port 80:** <http://192.168.1.015>
  - IP Address using port 8015:** <http://192.168.1.015:8015>
- A window will open, asking for a user name and password. Default settings:

- User Name:** admin
- Password:** admin



- Install the ActiveX control if prompted:



- After installing ActiveX, the camera should be visible in the web browser interface. If the web browser interface does not appear, verify the address using the IP Installer.



### Next Steps:

After the camera is accessible, further setup can be completed using the Config menus. Visit the Support Tab on the product page for this camera at [www.SnapAV.com](http://www.SnapAV.com) to download the manual, IP Installer utility software, and latest firmware. Refer to the manual to:

- Set up User Accounts, including administrator access
- Set up remote access using [wirepathdns.com](http://wirepathdns.com)
- Set up NVR connections (if using an NVR for network recording)
- Optimize image and video settings
- Set up advanced sharing and integration of the camera's four video streams
- Set up scheduling and motion detection to optimize recording time