



## Integration Note

Manufacturer:	SnapAV
Model Number(s):	LUM-500-DVR-4CH, LUM-500-DVR-8CH, LUM-500-DVR-16CH
Core Module Version:	7.3
Device Tested	LUM-500-DVR-4CH
Document Revision Date:	11/25/2015

### OVERVIEW AND SUPPORTED FEATURES

The SnapAV Luma DVR is a network-enabled DVR that supports the connection of 9 or 16 analog cameras. The DVR Connects to the g! Controller via Ethernet to provide communications, enabling live video, and control from the g! system.

#### **THE FOLLOWING FEATURES ARE SUPPORTED:**

**Video Streams:** Each of the connected cameras is available as a Video Camera/Source in the g! system for live video streaming.

**Basic Control:** The SnapAV Wirepath DVR OSD is controllable via g! Keypads and the SnapAV OSD with a built in one-way IP driver and interface. This interface is assignable as a source on any zone controller on the Media tab.

#### **THE FOLLOWING FEATURES ARE NOT SUPPORTED:**

**Recorded Video:** Video output from the SnapAV DVR is not available in the g! Viewer.

**PTZ:** Pan / tilt / zoom features are not available for video cameras connected to the SnapAV DVR.

Any feature not specifically noted as supported should be assumed to be unsupported.
--

## INSTALLATION OVERVIEW

Installing the SnapAV DVR can be broken down into the following steps:

1. During the rough-in phase install the necessary power, A/V, and network cabling for the SnapAV Wirepath DVR and Cameras
2. Also during the rough-in phase, run a Cat5 wire from the location of the DVR back to the Router to provide the Ethernet connection needed to control the DVR.
3. Install the DVR and Cameras.
4. Test the DVR and Cameras independently of the g! system to ensure proper operation of the DVR and Cameras.
5. Configure the g! system for the DVR. This step is outlined in **g! Configuration Details**.
6. Test the system.

## LUM-500-DVR-4CH, LUM-500-DVR-8CH, LUM-500-DVR-16CH CONFIGURATION

In addition to normal SnapAV Luma setup procedures, it is required to set the LUM-500-DVR devices to static IP addresses for reliable communications. To set a DVR to a static IP address, use the remote or attached mouse to navigate the on screen interface:

1. Press the Menu Button on the Remote..
2. Navigate to Setup.
3. In Setup, navigate to Network.
4. In Network, set NET TYPE to STATIC IP
5. Select IP ADDRESS and enter an available static IP address. Typically the first IP Video device is set to 192.168.0.80, the second to 192.168.0.81, and so on.
6. Select SUBNET MASK and set to 255.255.255.000
7. Set the DEFAULT GATEWAY and DNS SERVER (PRIMARY) to the router IP address. By default, 192.168.0.001.
8. Press RETURN to get back to the HOME screen.

On slower networks there can be occasional issues rendering the video feeds from the SnapAV DVR. In order to alleviate this, the Compression, WAP Picture Quality and Video Stream settings may need to be adjusted:

To adjust Picture Quality and Video Stream:

1. Press the Menu Button on the Remote..
2. Navigate to Setup.
3. In Setup, Navigate to Network
4. In Network Setup, Select Advanced
5. Set WAP Picture Quality to Normal or Fair

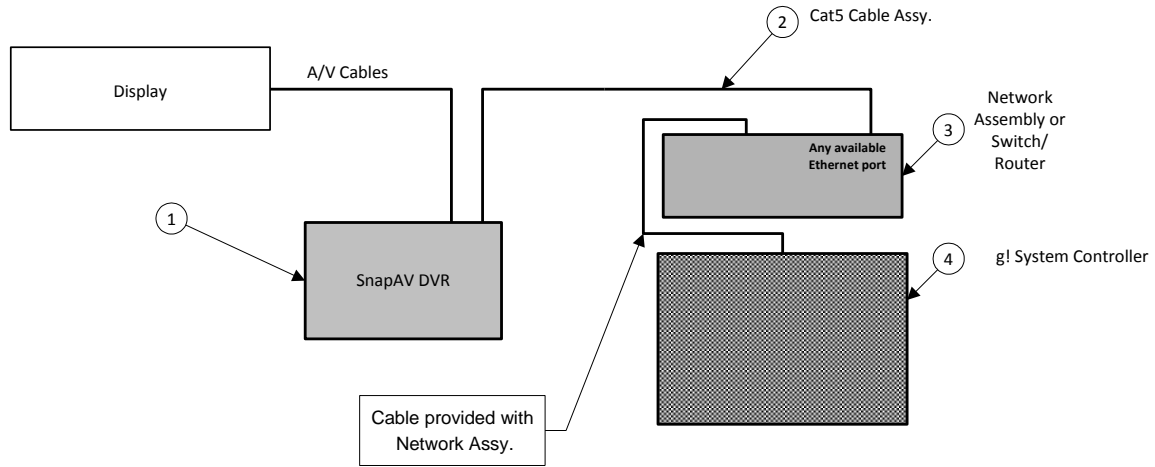
6. Set Video Stream to QCIF-Normal or QCIF-Fair

To adjust Compression:

1. Press the Menu Button on the Remote..
2. Navigate to Setup.
3. In Setup, Navigate to Pre-Camera Setup
4. Set Compression to High

For detailed information on Compression, Picture Quality and Video Stream settings and their impact on the DVR, please refer to the SnapAV DVR documentation.

## CONNECTION DIAGRAM



## BILL OF MATERIALS

#	Device	Manufacturer	Part Number	Protocol	Connector Type	Notes
1	SnapAV DVR	SnapAV	LUM-500-DVR-xxCH	Ethernet	RJ-45	
2	Cat 5 Cable Assy	Installer	N/A	Ethernet	RJ-45 Male X RJ-45 Male	
3	Switch/Router	Various	Various	Ethernet	RJ-45	
4	g! System Controller	ELAN	Various (e.g. HC 12)	Ethernet	RJ-45	

## g! CONFIGURATION DETAILS

The following table provides settings used in the g! Configurator. Please refer to the *g! Configurator Reference Guide* for more details.

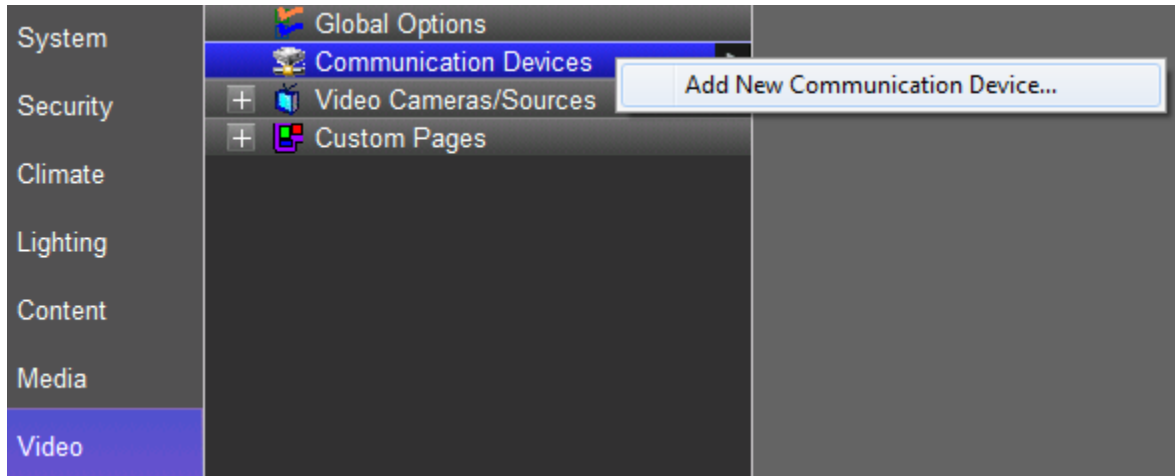
- “<User Defined>”, etc. Type in the desired name for the item.
- “<Auto Detect >”, etc. The system will auto detect this variable.

Devices	Variable Name	Setting	Comments
<b>Video Tab</b>			
<b>Communication Devices</b>	<b>Name</b>	<User Defined> (Default: SnapAV)	
	<b>Type</b>	Ethernet	
	<b>Communication Type</b>	SnapAV Luma 500 DVR xxCH	Choose Appropriate Number of channels for your model.
	<b>User Name</b>	<User Defined> (Default: admin)	
	<b>Password</b>	<User Defined> (Default: admin)	
	<b>Device ID</b>	<Select>	
	<b>IP Address</b>	<User Defined>	Typically 192.168.0.80 for the first video device, 192.168.0.81 for the second, and so on.
	<b>Port</b>	<User Defined> (Default: 80)	
<b>Cameras/Sources</b>	<b>Name</b>	<User Defined>	This device auto populates with the Communication Device on the Video Tab.
<b>&lt;Automatically Added&gt;</b>	<b>Device Type</b>	<Select>	
	<b>Location</b>	<User Defined> (Not Required)	
	<b>COM Device</b>	<Select> (Default: SnapAV)	
	<b>Enable DVR</b>	<Select> (Default: No)	
	<b>Has Audio</b>	<Select> (Default: No)	
	<b>Flip Image 180</b>	<Select> (Default: No)	
	<b>Hide Resolution Control</b>	<Select> (Default: No)	
	<b>Hide Full Screen Control</b>	<Select> (Default: No)	
	<b>Default Resolution</b>	<Select> (Default: <Don't Change>)	
	<b>Record Resolution</b>	<Select> (Default: <DON'T CHANGE>) (See Note 1)	
	<b>Record Mode</b>	<Select> (Default: Auto (Medium Sensitivity)) (See Note 1)	
<b>Media Tab</b>			
<b>Two-Way Device &gt; DVD Player</b>	<b>Name</b>	<User Defined>	
<b>&lt;Automatically Added&gt;</b>	<b>Device Type</b>	SnapAV Luma 500 DVR	This device auto populates with the Communication Device on the Video Tab.
	<b>User Name</b>	<User Defined>	
	<b>Password</b>	<User Defined>	
	<b>IP Address</b>	<User Defined>	
	<b>Port</b>	<User Defined>	
<b>One Way Interface</b>	<b>Interface Name</b>	<User Defined>	
	<b>Layout Template</b>	SnapAV	
	<b>Connect to Existing</b>	<Select from List> SnapAV Luma 500 DVR	Two-Way Device Described above
Notes:			
	1. Refer to the DVR integration note for details. Typically the g! DVR is not used with SnapAV DVR.		

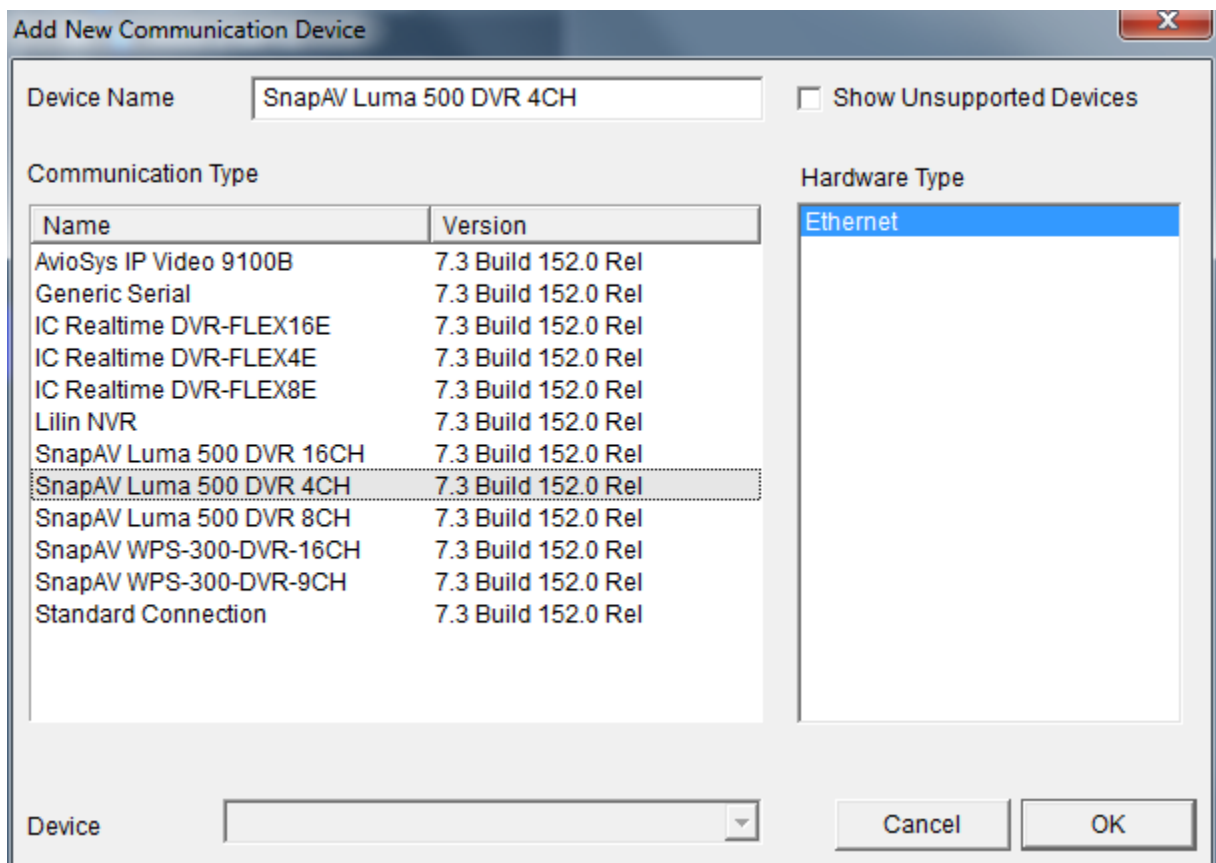
## g! CONFIGURATION STEPS

### CREATE DVR INSTANCE

1. Under **Video** tab/**Communication Devices**, select **Add New Communication Device**.



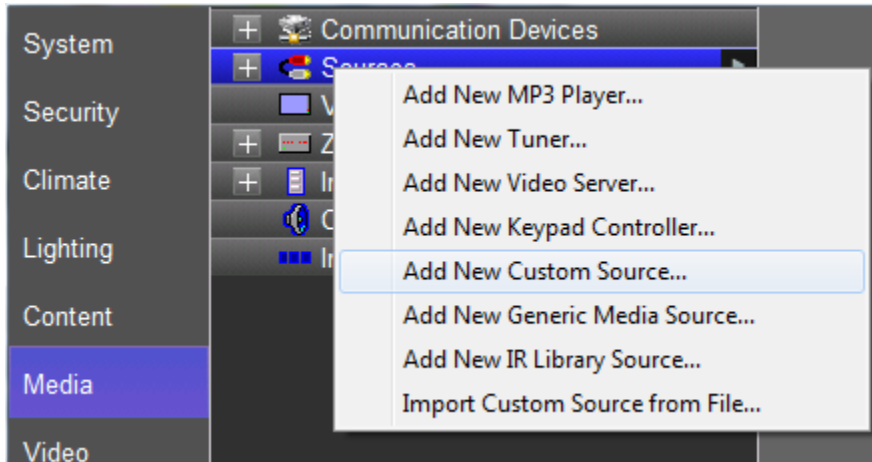
2. Configure the SnapAV DVR Communication device as Type: **Ethernet** and Communication Type **SnapAV Luma 500 DVR xxCH**.



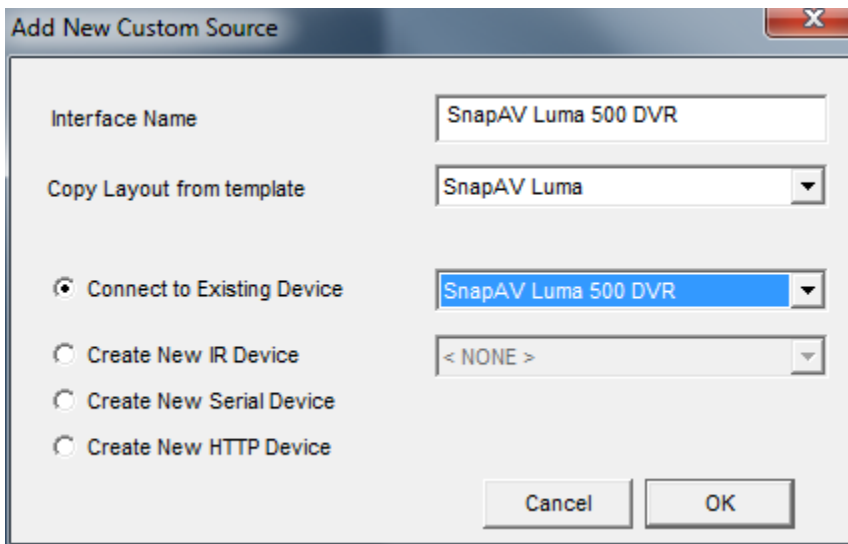
3. On the Video tab, the correct number of cameras for the DVR model chosen will automatically populate as **Video Cameras/Sources**.
4. On the Media tab, a DVR Player Two-Way Device will automatically populate.

### CREATE CUSTOM SOURCE

1. On the Media tab under **Sources**, select **Add New Custom Source**.



2. Select the **Snap AV** template and connect to **SnapAV Luma 500 xxCH**, which was automatically added by populating the DVR Communication Device on the Video Tab.



3. Finally, add the source to the desired zone controller input as normal and arrange the appropriate selections to manage your Display source to select the SnapAV DVR monitor out for one-way control from the g! Viewer.

System

Security

Climate

Lighting

Content

Media

Video

Messaging

Irrigation

Pool Control

Communication Devices

Two-Way Devices

One-Way Devices

SnapAV DVR

Large Format

View

Control

Small Format

View

Control

TS2

HR2

View

Control

Zone Controllers

Generic Single Zone Controller


gZone 1

(Source 01) Interface: SnapAV I ▶

Audio Source: Interface: SnapAV DVR

System #  
4290

Source Device  
Interface: SnapAV DVR

Display Icon  
 Select Icon...

Source Volume  
< DONT CHANGE >

Display Name  
SnapAV DVR



## COMMON MISTAKES

1. Setting incorrect Device ID. The Device ID in the Configurator must match the ID set in the changer's setup menu.
2. If no One-Way Interface commands are functional, authentication may have timed out on the SnapAV DVR. Use the Menu button and navigate to Login/Logout Menu, and select Login. UserID and Password should populate from g! credentials.
3. Slow or Choppy video can be experienced on a slow network or with a large number of Viewers streaming video attached to the system. This can be alleviated by adjusting the DVR's Compression, Picture Quality and Video Stream settings, as detailed in the WPS-300-DVR-9CH, WPS-300-DVR -16CH Configuration section of this document