

2Wire Router Setup

Overview

Follow these steps for Router Firewall Setup for Wirepath™ DVRs with a 2Wire router. Some of the screens may look different; however the steps will be the same. If you have questions about your specific 2Wire device, please contact technical support.

Before Beginning

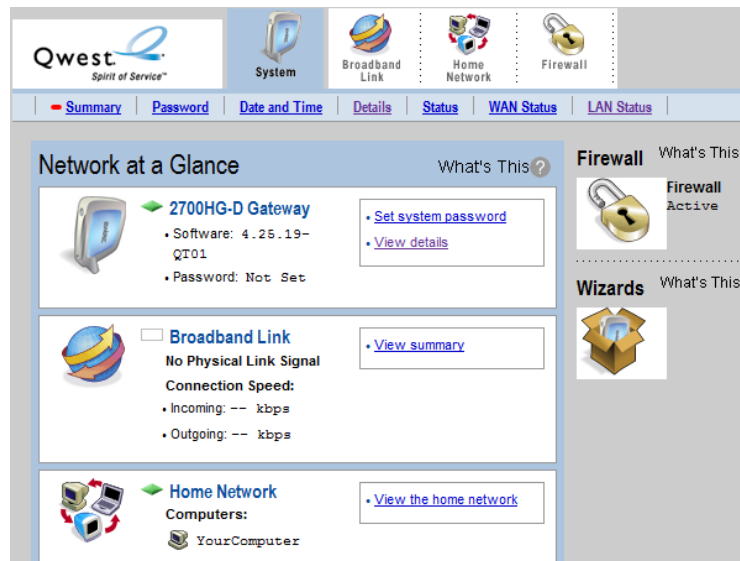
Complete the initial setup of the Wirepath™ DVR by following the instructions in the products owner's manual or the WPS-DVR Quick Start Guide.

The following information from the DVR setup is needed to complete the setup of the router:

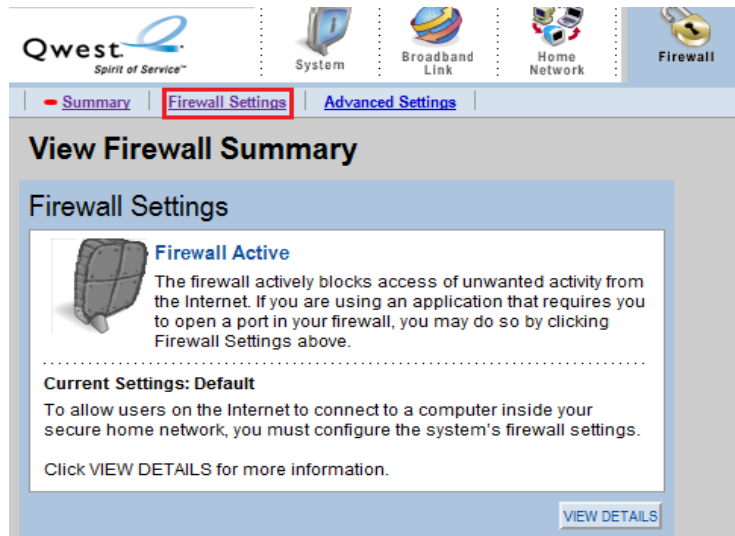
- Name of the WPS-DVR (2wire routers do not require a set static IP, devices are identified by name)
- Control Port
- Data Port
- HTTP Port

Setting Up the Router

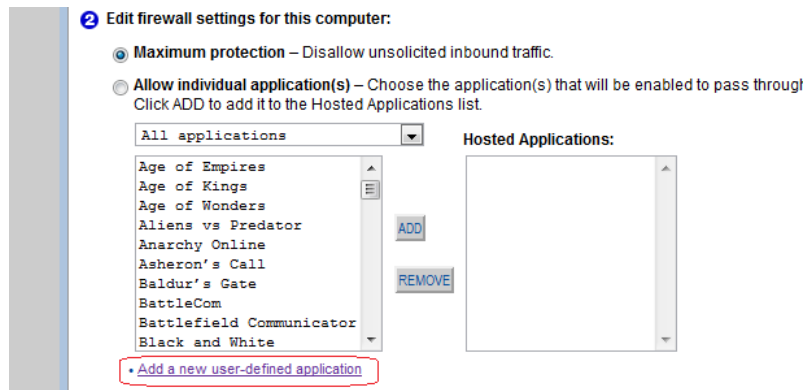
1. Before logging into the router, connect the DVR to the Network and turn it on.
2. Login to router using the default gateway, and username/password that is in the router user manual.
3. Once logged in, locate the Firewall tab at the top.



- Click on the **Firewall** tab to access the **Firewall Settings** tab.



- Once the page is loaded click on Add a new user-defined application.



6. For 'Application Name' give this entry a name.

For this step we will do 2 exceptions per port: 1 for TCP and 1 for UDP. We will have 5 exceptions total since port 80 only requires TCP.

Example: PORT (or range) From:67 To:67 TCP

PORT (or range) From:67 To:67 UDP

- Follow this template for ports 67, 68 and for 80 we only need a TCP exception.
- Protocol Timeout (seconds) & Map to Host Port & Application Type can be set to their default values.

7. Click Add Definition

8. Repeat Step 5 and 6 for all ports.

9. Once you have entered all the ports for this entry click **Back**.

10. In the Firewall settings, select the DVR from the **Select a Computer** drop down menu.

11. Save all changes and make sure that you have 5 hosted exceptions listed.

Contacting Technical Support

Phone: (866) 838-5052

Email: Techsupport@snapav.com