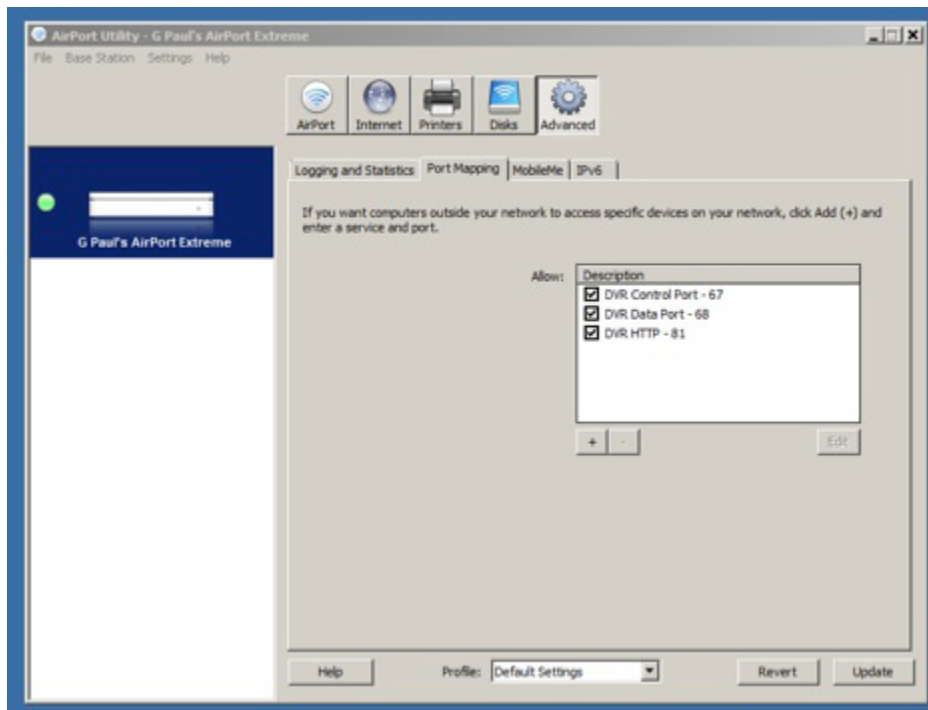


AIRPORT EXPRESS AND EXTREME SETUP

1. Open **Airport Utility** on the PC
2. Select the AirPort Base Station and enter **Manual Setup**
3. Select the **Advanced** Tab
4. Select **Port Mapping**



5. Forward ports 67, 68 and 81 to the DVR's IP address(192.168.0.20 in this example)by entering the information below :

- **Control – 67**

Port Mapping Setup Assistant

Choose a service from the pop-up menu or enter the public and the private IP address and ports that you want to map between.

Service: Custom...

Public TCP Port(s): 67

Public UDP Port(s): 67

Private IP Address: 192.168.0.20

Private TCP Port(s): 67

Private UDP Port(s): 67

Back Continue Cancel

Port Mapping Setup Assistant

Enter the description for this port mapping entry.

Description: DVR Control Port - 67

Advertise globally using Bonjour

Service Name:

Service Type:

When you are finished, click Done to save your port mapping entry.

Back Done Cancel

• Data – 68

Port Mapping Setup Assistant

Choose a service from the pop-up menu or enter the public and the private IP address and ports that you want to map between.

Service: Custom...

Public TCP Port(s): 68

Public UDP Port(s): 68

Private IP Address: 192.168.0.20

Private TCP Port(s): 68

Private UDP Port(s): 68

Back Continue Cancel

Port Mapping Setup Assistant

Enter the description for this port mapping entry.

Description: DVR Data Port - 68

Advertise globally using Bonjour

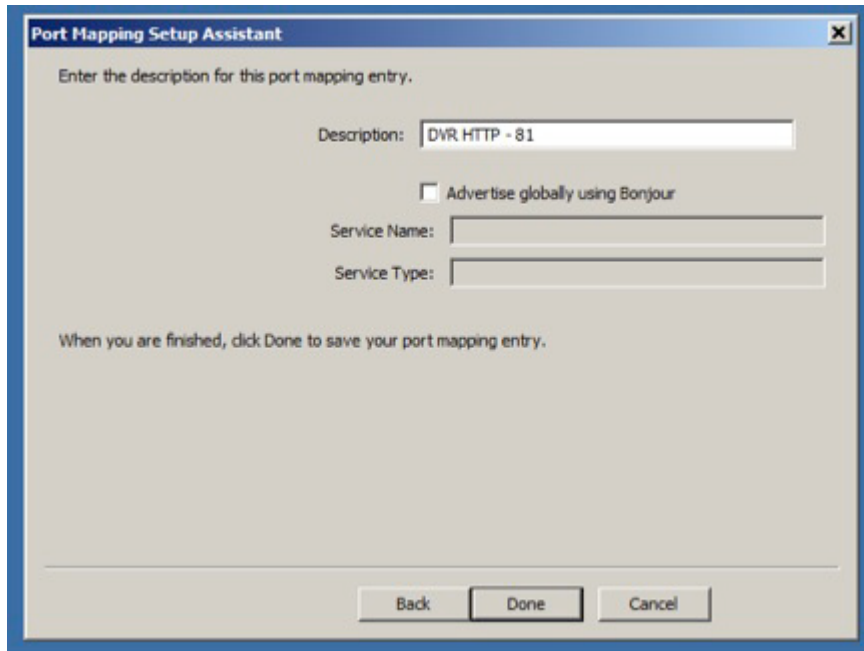
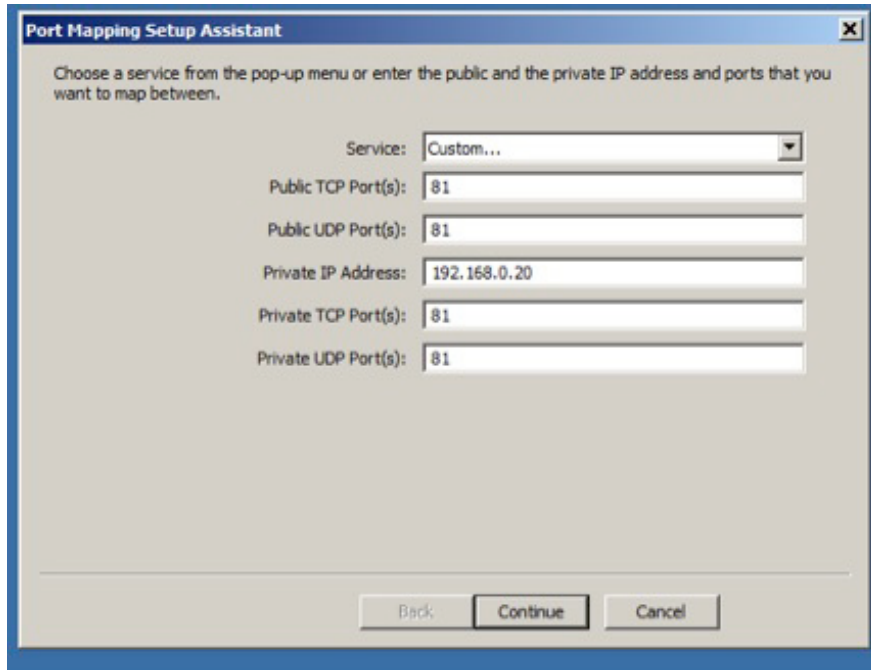
Service Name:

Service Type:

When you are finished, click Done to save your port mapping entry.

Back Done Cancel

• HTTP – 81



6. Select **UPDATE**

7. The router has now been configured to allow remote access to the DVR. The Internet address of the router can be found on the **Airport** Tab. Entering the **Internet IP Address** of the router (followed by **:81/ie.htm**) to Internet Explorer will allow remote access to the DVR.

