

Asus Router Setup

Overview

Follow these steps for Router Firewall Setup for Wirepath™ DVRs with an Asus router. Some of the screens may look different; however the steps will be the same. If you have questions about your specific Asus device, please contact technical support.

Before Beginning

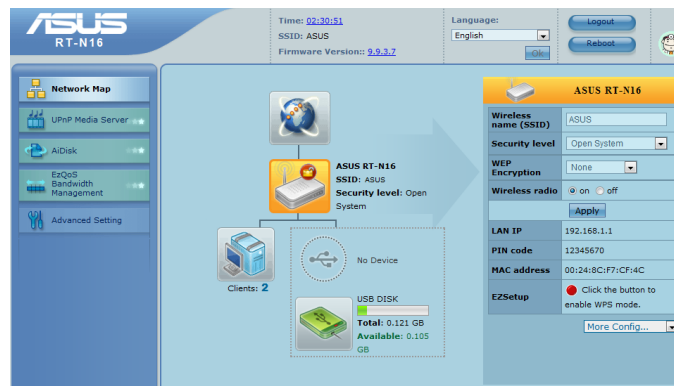
Complete the initial setup of the Wirepath™ DVR by following the instructions in the products owner's manual or the WPS-DVR Quick Start Guide.

The following information from the DVR setup is needed to complete the setup of the router:

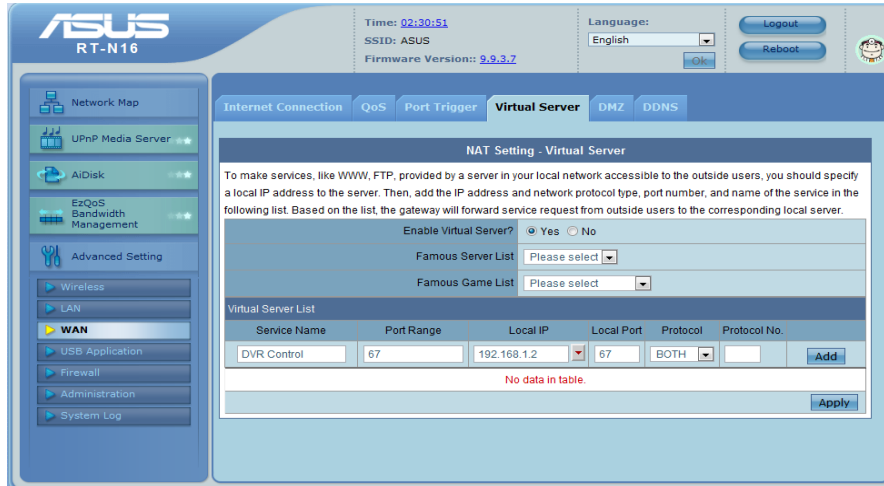
- Static IP Address
- Control Port
- Data Port
- HTTP Port

Setting Up the Router

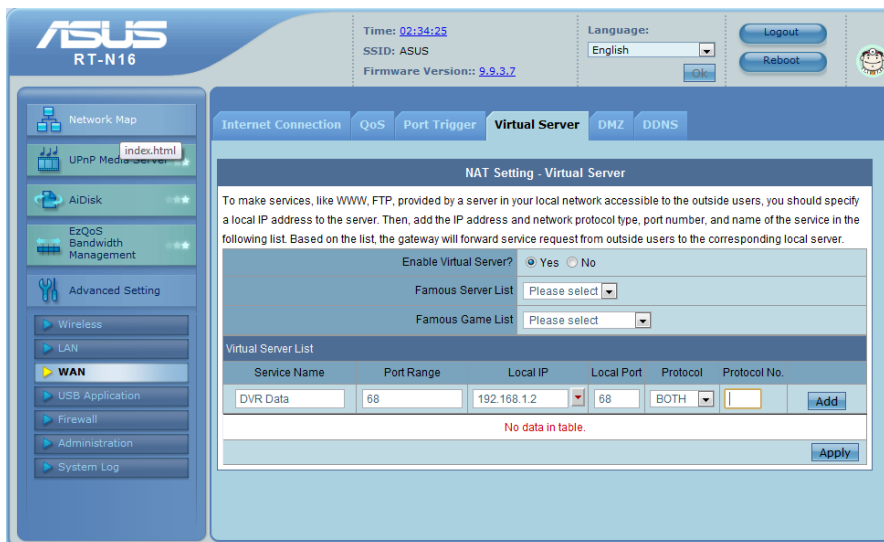
1. Before logging into the router, connect the DVR to the Network and turn it on.
2. Login to router using login information provided in user manual.



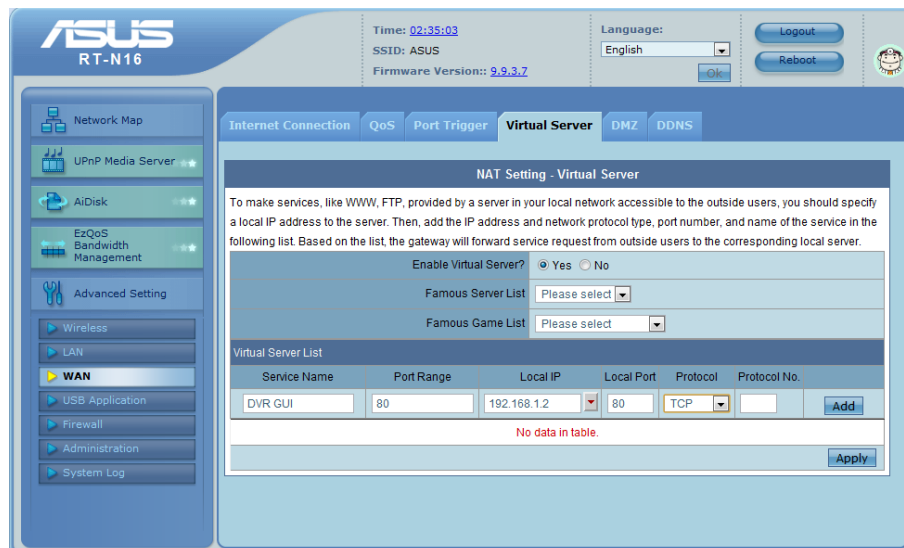
- On the left, locate and select the "Advanced Setting" tab and then select the Virtual Server tab at the top of the screen. Enable virtual server and leave Famous Server List and Famous Game List blank.



- For Service Name, enter DVR Control and for port range and local port use 67. For Local IP, select the Static IP address that was assigned to the DVR during the initial DVR setup. Protocol should be both
- Select the "ADD" button to save the changes.
- Repeat steps 3-5 with the service name DVR Data. The port range and local port should be 68 and the protocol both. The Local IP is the same static IP for the DVR. Save changes by clicking the "ADD" button.



- Repeat steps 3-5 with the service name DVR GUI. The port range and local port should be 80 and the protocol should be TCP. Save changes by clicking the ADD button.



- There should now be 3 exceptions in the virtual server list. If there is not then redo these steps for whichever port is missing out of the three.
- Be sure to close the browser when you have finished.

Contacting Technical Support

Phone: (866) 838-5052

Email: Techsupport@snapav.com