

WIREFATH

FIBER

WP-CNTR-FBR-LC-MM10 Fiber Connector Termination

Follow this guide to terminate Wirepath™ Fiber LC connectors on SSF™ cable using Wirepath Fiber tools.

I. Compatibility and Features

- Unique termination method eliminates the need for any polishing or cleaning of the fiber.
- Compatible with the following Wirepath SSF™ bulk cables:
 - SP-FBR-PL-1K-SMM/DMM – SSF Simplex and Duplex Multimode OM3 50/125 3mm Plenum Fiber
 - SP-FBR-R-1K-SMM/DMM – SSF Simplex and Duplex Multimode OM3 50/125 3mm Riser Fiber

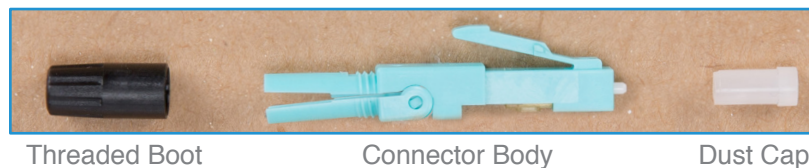
II. Required Termination Tools (WP-TOOL-KIT-FIBER or WP-TOOLKIT-FIBER-BAS/PRO)

- Fiber Cleaver
- Visual Fault Locator (VFL)
- Cable Stripper Tool
- Cable Scissors
- Measuring Tool



Note: All Wirepath Fiber Cleavers come pre-adjusted for cleaving Wirepath SSF fiber. Other fiber cleaver tools might require adjustment of the cutting wheel to work properly.

III. Connector Breakdown



Threaded Boot

Connector Body

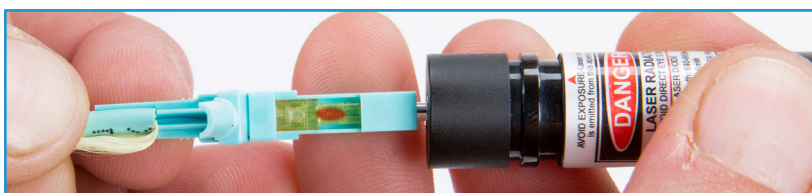
Dust Cap

Note: Keep the dust cap in place whenever possible to avoid damage to the end of the connector.

IV. Using the Visual Fault Locator (VFL) Tool

The VFL tool shines a laser through the connector and verifies proper fiber alignment during assembly based on the brightness of the light seen through the activator slide tab.

Bright light in the activator slide tab indicates fiber is not present/aligned correctly in the connector.



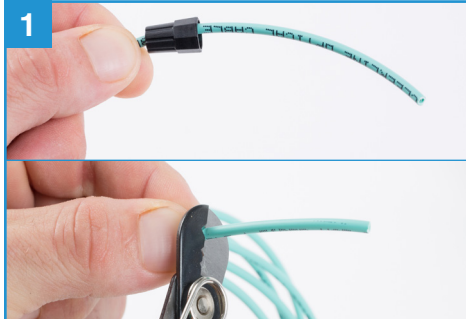
Light dims in the activator slide tab once the fiber is correctly aligned inside the connector.

Note: insert the LC adaptor in the VFL tool to test LC connectors. Your tool kit may include a different model VFL tool. Basic operation is the same; adaptor is included with all Wirepath VFL tools.

WIREFATH

FIBER

V. Terminating the Connector



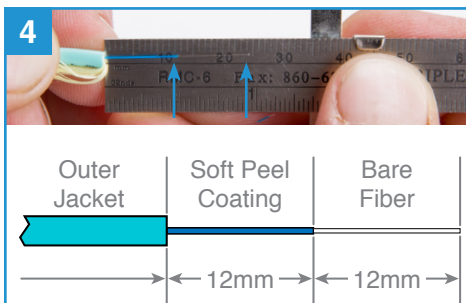
Slide the threaded boot on the end of the cable, then cut the fiber jacket back 2" using the strippers.



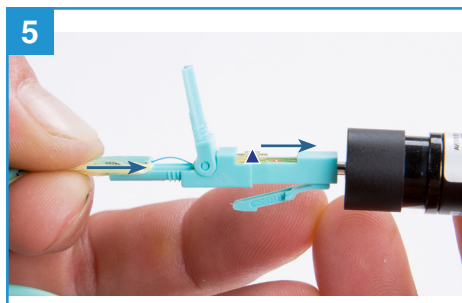
Using your fingernails, scrape the soft peel coating, leaving 12mm of coating between the jacket and the exposed fiber. *Important: Do not use strippers to remove the soft peel coating.



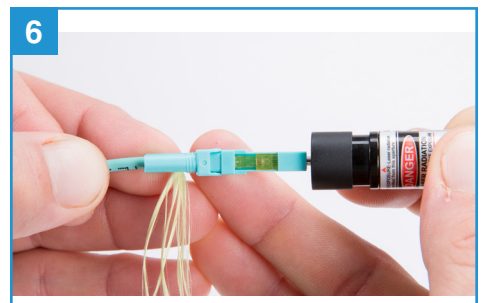
Open the cleaver. Align the end of the jacket at the 24mm mark, close the top, then quickly push the button (●) to complete the cut.



Measure the fiber. A properly cleaved end measures 24mm from the jacket to the tip of the fiber (12mm of coating and 12mm of bare fiber).



Push the fiber into the connector opening until it bends slightly and the VFL light dims, then push the activator slide tab (▲) toward the VFL to lock the fiber in place.



Fold the Kevlar strands to one side and hold the clamshell cover closed. Remove the connector from the VFL and replace the dust cap.



Thread the connector boot on enough to catch the Kevlar strands, then trim the strands and thread the boot on the rest of the way.



Termination is complete!
Remember to leave the dust cap in place until the connector is plugged in.



Scan the QR code to see instructional videos for all Wirepath Fiber products.